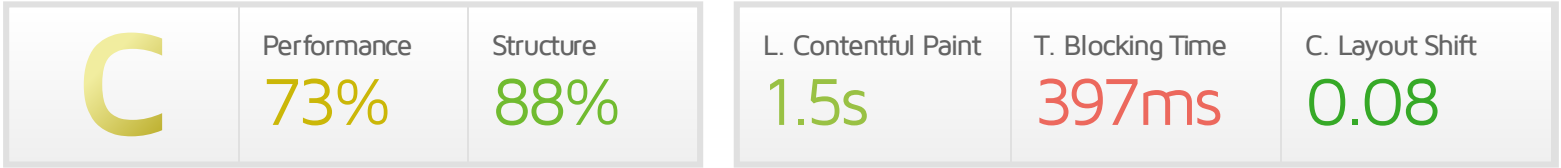


Performance Report for: <http://www.volubus.com/>

Report generated: Fri, Mar 8, 2024 8:55 PM -0800
 Test Server Location: London, UK
 Using: Chrome 117.0.0.0, Lighthouse 11.0.0



Top Issues

Med	Avoid an excessive DOM size <small>TBT</small>	1,950 elements
Med	Serve static assets with an efficient cache policy	Potential savings of 655KB
Med-Low	Use a Content Delivery Network (CDN)	32 resources found
Low	Avoid multiple page redirects <small>FCP LCP</small>	Potential savings of 461ms
Low	Avoid long main-thread tasks <small>TBT</small>	13 long tasks found

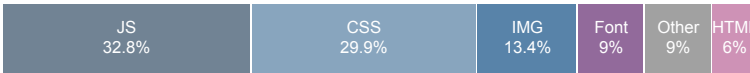
Page Details



Total Page Size - 1.52MB



Total Page Requests - 67



How does this affect me?

Today's web user expects a fast and seamless website experience. Delivering that fast experience can result in increased visits, conversions and overall happiness.

As if you didn't need more incentive, **Google has announced that they are using page speed in their ranking algorithm.**

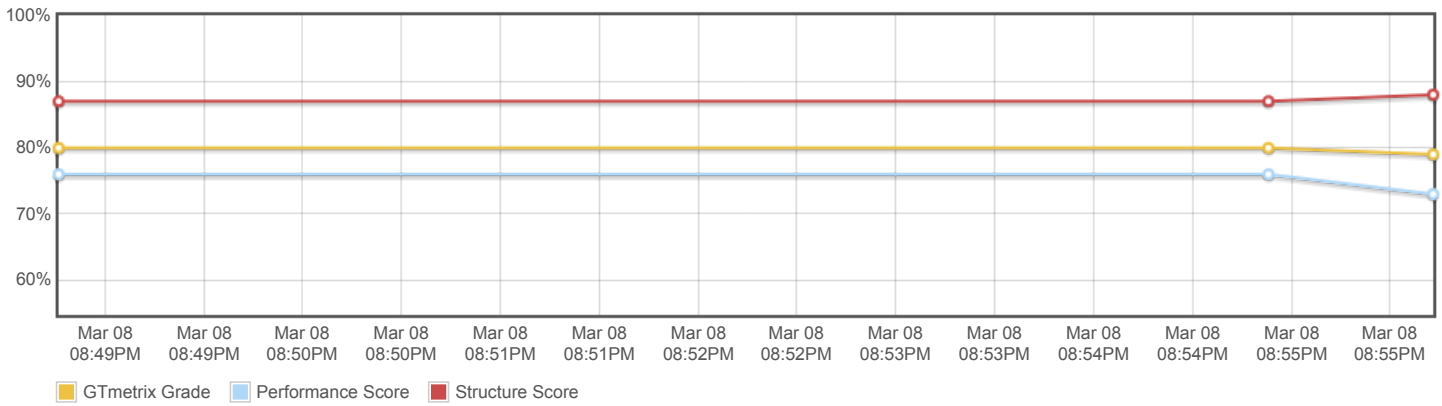
About GTmetrix

GTmetrix is developed by the good folks at **CARBON60**, a Canadian hosting company with over 28 years experience in web technology.

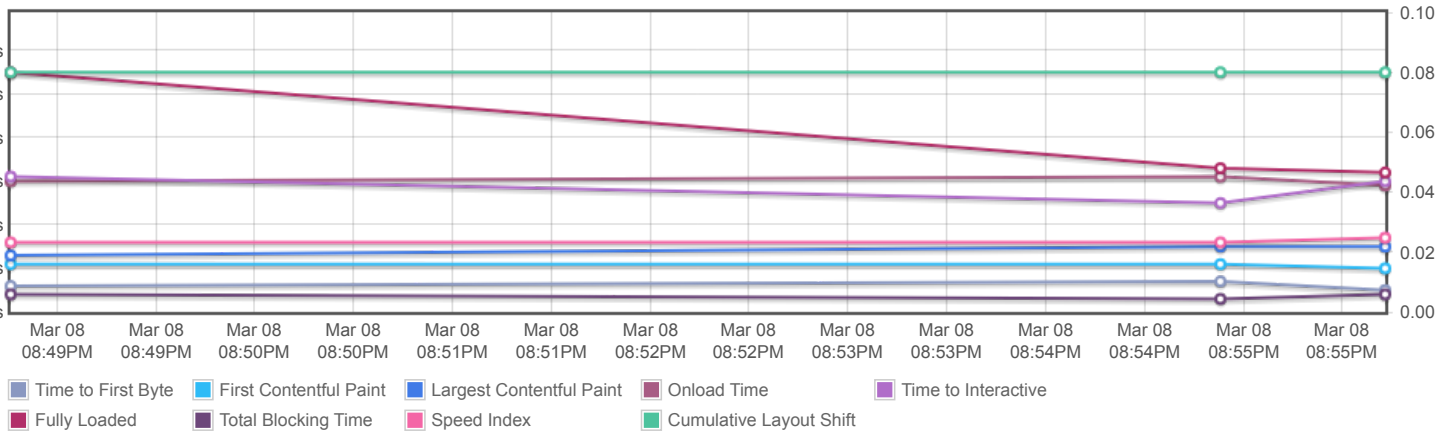


<https://carbon60.com/>

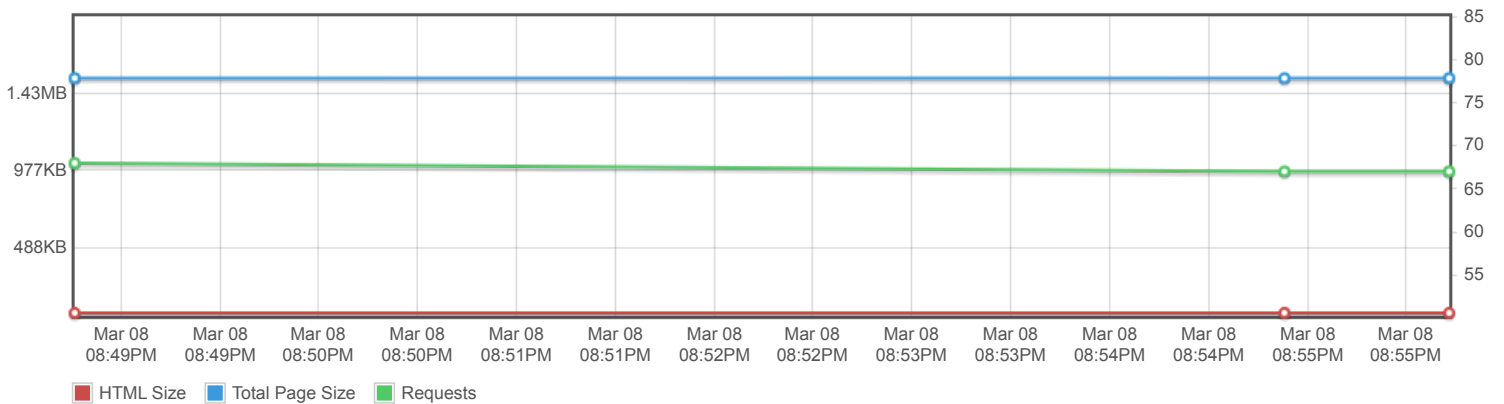
Page scores



Page metrics

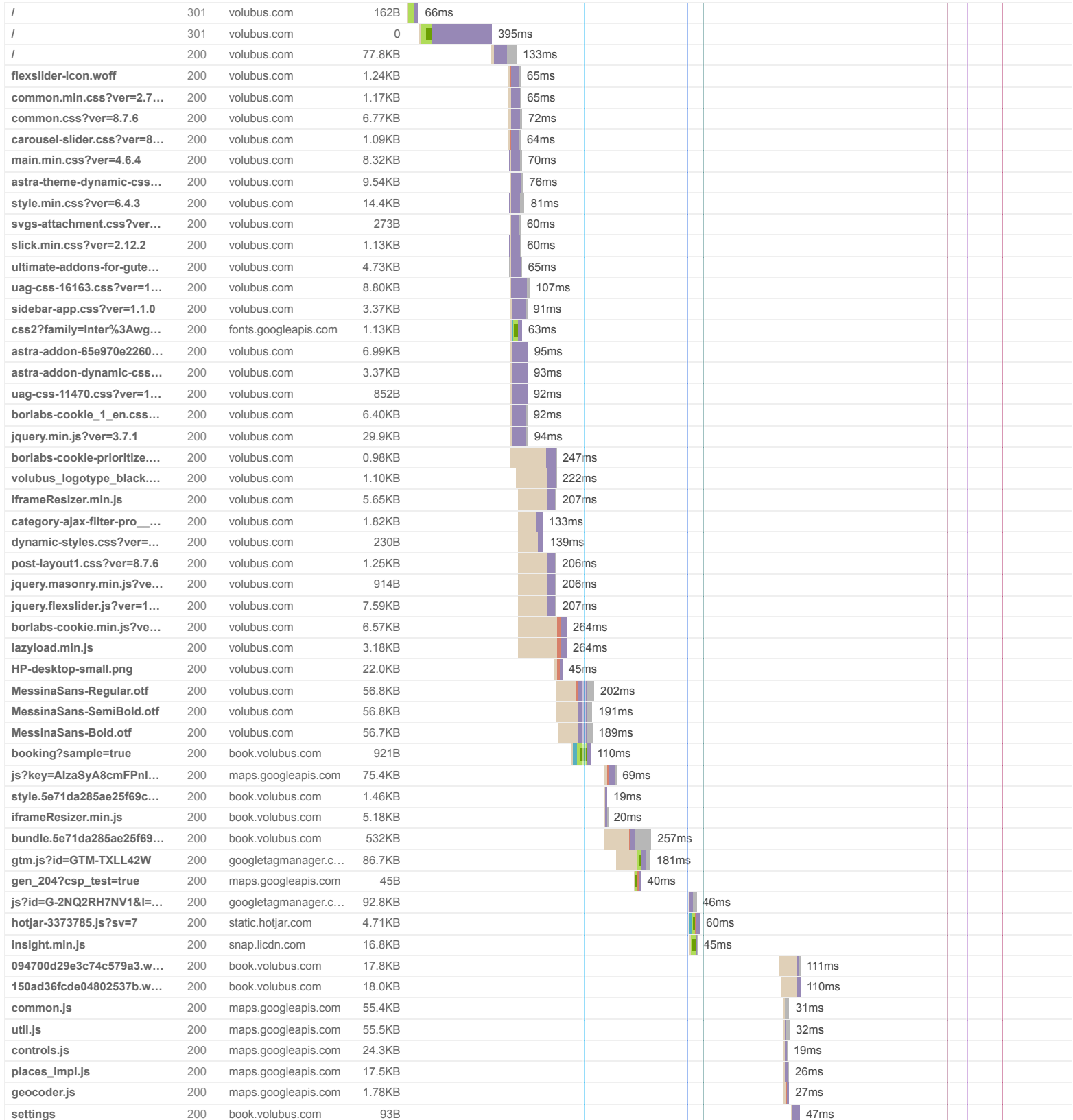


Page sizes and request counts

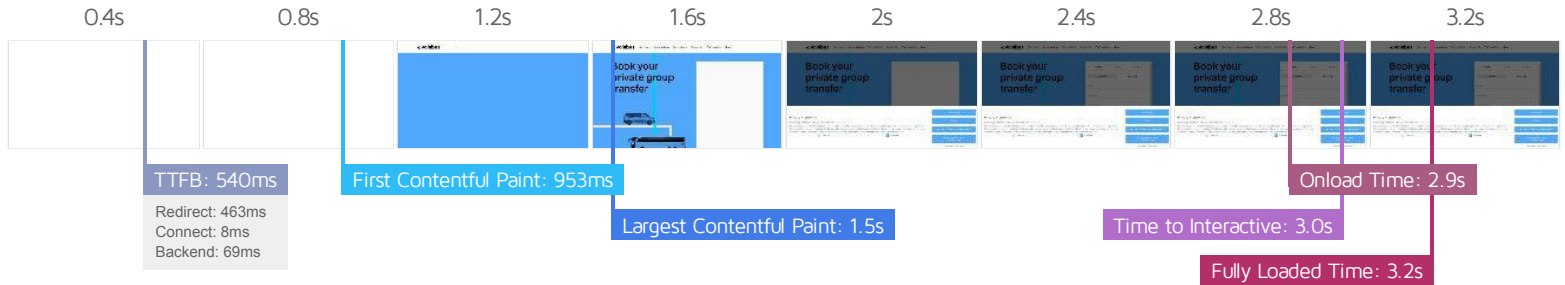


The waterfall chart displays the loading behaviour of your site in your selected browser. It can be used to discover simple issues such as 404's or more complex issues such as external resources blocking page rendering.

Minibus&Coach Rental and Transfers | Hire a Bus - Volubus



modules.a4fd7e5489291af...	200	script.hotjar.com	54.3KB						42ms
collect?v=2&fmt=js&pid=...	302	px.ads.linkedin.com	0						279ms
3373785?s=0.25&r=0.0314...	204	vc.hotjar.io	233B						49ms
POST ?site_id=3373785&...	200	content.hotjar.io	56B						66ms
collect?v=2&fmt=js&pid=...	302	px.ads.linkedin.com	0						88ms
li_sync?redirect=https%3...	302	linkedin.com	0						106ms
collect?v=2&fmt=js&pid=...	200	px.ads.linkedin.com	160B						89ms
POST wa/	204	px.ads.linkedin.com	199B						94ms
destination?id=AW-10822...	200	googletagmanager.c...	82.8KB						34ms
Volubus-logo-sign.svg	200	volubus.com	639B						36ms
10822183795?random=17...	200	googleadservices.com	1.66KB						61ms
10822183795?random=91...	302	googleads.g.doublec...	42B						50ms
10822183795?random=91...	302	google.com	42B						36ms
10822183795?random=91...	200	google.co.uk	42B						40ms
67 Requests 1.52MB (5.80MB Uncompressed) Fully Loaded 3.2s (Onload 2.9s)									



Performance Metrics

<p>First Contentful Paint</p> <p>How quickly content like text or images are painted onto your page. A good user experience is 0.9s or less.</p>	<p>OK, but consider improvement</p> <p>952ms</p>	<p>Time to Interactive</p> <p>How long it takes for your page to become fully interactive. A good user experience is 2.5s or less.</p>	<p>OK, but consider improvement</p> <p>3.0s</p>
<p>Speed Index</p> <p>How quickly the contents of your page are visibly populated. A good user experience is 1.3s or less.</p>	<p>Longer than recommended</p> <p>1.7s</p>	<p>Total Blocking Time</p> <p>How much time is blocked by scripts during your page loading process. A good user experience is 150ms or less.</p>	<p>Much longer than recommended</p> <p>397ms</p>
<p>Largest Contentful Paint</p> <p>How long it takes for the largest element of content (e.g. a hero image) to be painted on your page. A good user experience is 1.2s or less.</p>	<p>OK, but consider improvement</p> <p>1.5s</p>	<p>Cumulative Layout Shift</p> <p>How much your page's layout shifts as it loads. A good user experience is a score of 0.1 or less.</p>	<p>Good - Nothing to do here</p> <p>0.08</p>

Browser Timings

Redirect	463ms	Connect	8ms	Backend	69ms
TTFB	540ms	First Paint	953ms	DOM Int.	1.5s
DOM Loaded	1.6s	Onload	2.9s	Fully Loaded	3.2s

IMPACT AUDIT

Low

Allow back/forward cache restoration

1 failure reason

Many navigations are performed by going back to a previous page, or forwards again. The back/forward cache (bfcache) can speed up these return navigations.

FAILURE REASON

Pages with WebSocket cannot enter back/forward cache.
<https://book.volubus.com/booking?sample=true>

FAILURE TYPE

Pending browser support

Low

Reduce JavaScript execution time TBT

1.2s spent executing JavaScript

Consider reducing the time spent parsing, compiling, and executing JS. You may find delivering smaller JS payloads helps with this.

URL	TOTAL CPU TIME	SCRIPT EVALUATION	SCRIPT PARSE
• https://volubus.com/	601ms	248ms	23ms
• https://book.volubus.com/bundle.5e71da285ae25f69c27c.js	544ms	436ms	39ms
• Unattributable	493ms	53ms	0ms
• https://script.hotjar.com/modules.a4fd7e5489291affcf56.js	144ms	113ms	4ms
• https://www.googletagmanager.com/gtm.js?id=GTM-TXLL42W	117ms	101ms	14ms
• https://www.googletagmanager.com/gtag/js?id=G-2NQ2RH7NV1&l=dataLayer&cx=c	62ms	56ms	5ms
• https://maps.googleapis.com/maps/api/js?key=AlzaSyA8cmFPnIqEO84Hv4lh4KX-ccgukklfEA&libraries=places&language=en	53ms	45ms	3ms
• https://www.googletagmanager.com/gtag/destination?id=AW-10822183795&l=dataLayer&cx=c	51ms	47ms	4ms

Low

Avoid large layout shifts CLS

5 elements found

These DOM elements contribute most to the CLS of the page.

ELEMENT	CLS CONTRIBUTION
Book your private group transfer Our services Simply booked group transport fo... <div id="content" class="site-content">	0.07
Services About Volubus Event calendar Help center Partner with us News <div class="ast-builder-menu-1 ast-builder-menu ast-flex ast-builder-menu-1-focus-item..." data-section="section-hb-menu-1">	0.00
Hire a Bus - Volubus <div class="ast-builder-layout-element ast-flex site-header-focus-item" data-section="title_tagline">	0.00
Site Navigation <div class="site-header-primary-section-right site-header-section ast-flex ast-grid-ri...">	0.00
Partner with us <li id="menu-item-13025" class="menu-item menu-item-type-post_type menu-item-object-page menu-item-13025">	0.00

Low **Avoid enormous network payloads** FCP LCP Total size was 1.53MB

Large network payloads cost users real money and are highly correlated with long load times.

URL	TRANSFER SIZE
https://book.volubus.com/bundle.5e71da285ae25f69c27c.js	532KB
https://www.googletagmanager.com/gtag/js?id=G-2NQ2RH7NV1&l=dataLayer&cx=c	92.9KB
https://www.googletagmanager.com/gtm.js?id=GTM-TXLL42W	87.1KB
https://www.googletagmanager.com/gtag/destination?id=AW-10822183795&l=dataLayer&cx=c	82.8KB
https://volubus.com/	77.8KB
https://maps.googleapis.com/maps/api/js?key=AlzaSyA8cmFPnIqEO84Hv4lh4KX-_ccgukklfEA&libraries=places&language=en	75.6KB
https://volubus.com/wp-content/uploads/2022/04/MessinaSans-Regular.otf	56.8KB
https://volubus.com/wp-content/uploads/2022/04/MessinaSans-SemiBold.otf	56.8KB
https://volubus.com/wp-content/uploads/2022/04/MessinaSans-Bold.otf	56.7KB
https://maps.googleapis.com/maps-api-v3/api/js/56/3/common.js	55.8KB

Low **Ensure text remains visible during webfont load** FCP LCP 3 fonts found

Leverage the `font-display` CSS feature to ensure text is user-visible while webfonts are loading.

URL	POTENTIAL SAVINGS
https://volubus.com/wp-content/plugins/category-ajax-filter-pro/assets/css/common/fonts/flexslider-icon.woff	62ms
https://book.volubus.com/fonts/094700d29e3c74c579a3.woff2	22ms
https://book.volubus.com/fonts/150ad36fcd04802537b.woff2	22ms

Low **Reduce unused CSS** FCP LCP Potential savings of 48.1KB

Reduce unused rules from stylesheets and defer CSS not used for above-the-fold content to decrease bytes consumed by network activity.

URL	TRANSFER SIZE	POTENTIAL SAVINGS
• .page-id-16163 .ast-custom-button, .page-id-20453 .ast-custom-button { display: none; } ...	36.7KB	34.1KB
• https://volubus.com/wp-includes/css/dist/block-library/style.min.css?ver=6.4.3	14.4KB	14.0KB

Low **Minify CSS** FCP LCP Potential savings of 7.89KB

Minifying CSS files can reduce network payload sizes.

URL	TRANSFER SIZE	POTENTIAL SAVINGS
• .page-id-16163 .ast-custom-button, .page-id-20453 .ast-custom-button { display: none; } ...	36.7KB	7.89KB

Low **Avoid non-composited animations** CLS 7 animated elements found

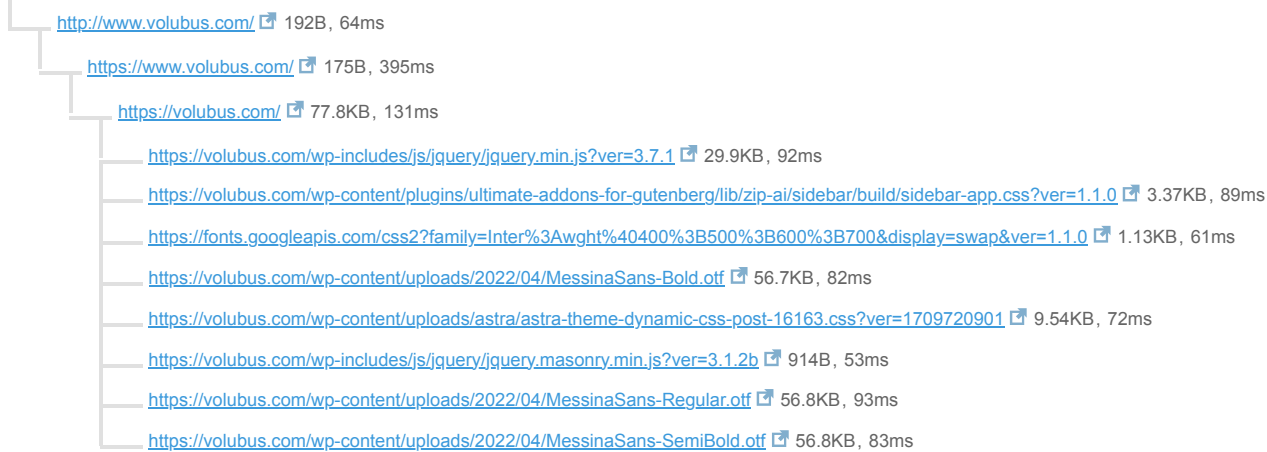
Animations which are not composited can be janky and increase CLS.

ELEMENT	NAME
<div>div.MuiFormControl-root > div.MuiFormControl-root > div.MuiInputBase-root > input#:r1:</div> <pre><input aria-invalid="false" autocomplete="off" id=":r1:" name="pickup_location" type="text" aria-autocomplete="list" aria-expanded="false" autocapitalize="none" spellcheck="false" role="combobox" class="MuiInputBase-input MuiInput-input css-mevgbx" value=""></pre>	mui-auto-fill-cancel
<div>Unsupported CSS Property: display</div>	
<div>div.jss48 > div.MuiBox-root > div.MuiInputBase-root > input#luggage_count</div> <pre><input id="luggage_count" name="luggage_count" type="text" class="MuiInputBase-input MuiInput-input MuiInputBase-inputAdornedStart MuiInputB..." value="0"></pre>	mui-auto-fill-cancel
<div>Unsupported CSS Property: display</div>	
<div>div.MuiGrid-root > div.MuiFormControl-root > div.MuiInputBase-root > input#:r8:</div> <pre><input aria-invalid="false" autocomplete="off" id=":r8:" name="pickup_time" placeholder="" type="text" inputmode="text" class="MuiInputBase-input MuiInput-input MuiInputBase-inputAdornedStart css-mevgbx" value=""></pre>	mui-auto-fill-cancel
<div>Unsupported CSS Property: display</div>	
<div>div.jss48 > div.MuiBox-root > div.MuiInputBase-root > input#passenger_count</div> <pre><input id="passenger_count" name="passenger_count" type="text" class="MuiInputBase-input MuiInput-input MuiInputBase-inputAdornedStart MuiInputB..." value="1"></pre>	mui-auto-fill-cancel
<div>Unsupported CSS Property: display</div>	
<div>div.MuiFormControl-root > div.MuiFormControl-root > div.MuiInputBase-root > input#:r4:</div> <pre><input aria-invalid="false" autocomplete="off" id=":r4:" name="destination" type="text" aria-autocomplete="list" aria-expanded="false" autocapitalize="none" spellcheck="false" role="combobox" class="MuiInputBase-input MuiInput-input css-mevgbx" value=""></pre>	mui-auto-fill-cancel
<div>Unsupported CSS Property: display</div>	
<div>div.MuiGrid-root > div.MuiFormControl-root > div.MuiInputBase-root > input#:r7:</div> <pre><input aria-invalid="false" autocomplete="off" id=":r7:" name="pickup_date" placeholder="" readonly="" type="text" inputmode="text" class="MuiInputBase-input MuiInput-input MuiInputBase-inputAdornedStart css-mevgbx" value=""></pre>	mui-auto-fill-cancel
<div>Unsupported CSS Property: display</div>	
<div>div.jss48 > div.MuiBox-root > div.MuiInputBase-root > input#carry_on_count</div> <pre><input id="carry_on_count" name="carry_on_count" type="text" class="MuiInputBase-input MuiInput-input MuiInputBase-inputAdornedStart MuiInputB..." value="0"></pre>	mui-auto-fill-cancel
<div>Unsupported CSS Property: display</div>	

The Critical Request Chains below show you what resources are loaded with a high priority. Consider reducing the length of chains, reducing the download size of resources, or deferring the download of unnecessary resources to improve page load.

Maximum critical path latency: 1.0s

INITIAL NAVIGATION



Reduce unused JavaScript and defer loading scripts until they are required to decrease bytes consumed by network activity.

URL	TRANSFER SIZE	POTENTIAL SAVINGS
https://book.volubus.com/bundle.5e71da285ae25f69c27c.js	532KB	185KB
https://maps.googleapis.com/maps/api/js?key=AlzaSyA8cmFPnlqEO84Hv4Ih4KX-ccgukklfEA&libraries=places&language=en	75.6KB	47.3KB
https://maps.googleapis.com/maps-api-v3/api/js/56/3/util.js	55.6KB	45.6KB
https://www.googletagmanager.com/gtm.js?id=GTM-TXLL42W	87.1KB	38.8KB
https://www.googletagmanager.com/gtag/js?id=G-2NQ2RH7NV1&l=dataLayer&cx=c	92.9KB	38.7KB
https://www.googletagmanager.com/gtag/destination?id=AW-10822183795&l=dataLayer&cx=c	82.8KB	34.9KB
https://script.hotjar.com/modules.a4fd7e5489291affcf56.js	54.8KB	22.6KB
https://maps.googleapis.com/maps-api-v3/api/js/56/3/controls.js	24.4KB	22.5KB

This is the largest contentful element painted within the viewport.

ELEMENT

Book your private group transfer Our services Simply booked group transport fo...

```
<div id="primary" class="content-area primary" data-rocket-lazy-bg-6dceca-2fb8-4afa-9a39-70ddf9fcd227="excluded" data-rocket-lazy-bg-fb0fedb9-fac5-4297-8deb-1f0e3ce0a2d2="excluded" data-rocket-lazy-bg-43992b0c-8eae-4c19-9547-7a4417ce0be3="excluded" data-rocket-lazy-bg-6f038608-1a71-4f88-9eba-34b863260a83="excluded" data-rocket-lazy-bg-893a9666-0d05-47d6-8649-d59425f3b6ab="excluded" data-rocket-lazy-bg-7c1d3e6c-9003-4a4c-b742-fdef48cc31e9="loaded" data-rocket-lazy-bg-54aa8ab1-6a5f-45ce-b479-b044a15de89b="loaded" data-rocket-lazy-bg-fe55b4a2-b0fe-4b96-a2d7-e73f727972dd="loaded" ...>
```

PHASE	% OF LCP	TIMING
TTFB	36%	540ms
Load Delay	18%	272ms
Load Time	2%	34ms
Render Delay	44%	667ms

N/A **Eliminate render-blocking resources** FCP LCP Potential savings of 12ms

Resources are blocking the first paint of your page. Consider delivering critical JS/CSS inline and deferring all non-critical JS/styles. Resources that **may** be contributing to render-blocking include:

URL	TRANSFER SIZE	DOWNLOAD TIME
https://volubus.com/wp-content/uploads/astra/astra-theme-dynamic-css-post-16163.css?ver=1709720901	9.54KB	152ms
https://fonts.googleapis.com/css2?family=Inter%3Awght%40400%3B500%3B600%3B700&display=swap&ver=1.1.0	1.13KB	789ms
https://volubus.com/wp-includes/js/jquery/jquery.min.js?ver=3.7.1	29.9KB	305ms

N/A **Reduce initial server response time** FCP LCP Root document took 68ms

Keep the server response time for the main document short because all other requests depend on it.

URL	TIME SPENT
https://volubus.com/	68ms

N/A **Avoid serving legacy JavaScript to modern browsers** TBT Potential savings of 7.17KB

Polyfills and transforms enable legacy browsers to use new JavaScript features. However, many aren't necessary for modern browsers. For your bundled JavaScript, adopt a modern script deployment strategy using module/nomodule feature detection to reduce the amount of code shipped to modern browsers, while retaining support for legacy browsers.

URL	POTENTIAL SAVINGS
https://volubus.com/wp-content/plugins/borlabs-cookie/assets/javascript/borlabs-cookie.min.js?ver=2.2.67 Line:0 Column:21227	6.92KB
https://static.hotjar.com/c/hotjar-3373785.js?sv=7 Line:2 Column:921	71B
https://book.volubus.com/bundle.5e71da285ae25f69c27c.js Line:74 Column:249020	69B
https://snap.licdn.com/li.lms-analytics/insight.min.js Line:0 Column:680	59B
https://script.hotjar.com/modules.a4fd7e5489291affcf56.js Line:1 Column:68485	59B

N/A **Minimize main-thread work** TBT Main-thread busy for 2.3s

Consider reducing the time spent parsing, compiling and executing JS. You may find delivering smaller JS payloads helps with this.

CATEGORY	TIME SPENT
Script Evaluation	1.2s
Other	545ms
Style & Layout	272ms
Script Parsing & Compilation	130ms
Parse HTML & CSS	66ms
Garbage Collection	42ms
Rendering	25ms

N/A

Reduce the impact of third-party code TBT

Third-party code blocked the main thread for 25ms

Third-party code can significantly impact load performance. Limit the number of redundant third-party providers and try to load third-party code after your page has primarily finished loading.

THIRD-PARTY	TRANSFER SIZE	MAIN-THREAD BLOCKING TIME
HOTJAR	59.9KB	23ms
• https://script.hotjar.com/modules.a4fd7e5489291affcf56.js	54.8KB	23ms
• https://static.hotjar.com/c/hotjar-3373785.js?sv=7	4.71KB	0ms
GOOGLE TAG MANAGER	263KB	1ms
• https://www.googletagmanager.com/gtm.js?id=GTM-TXLL42W	87.1KB	1ms
• https://www.googletagmanager.com/gtag/js?id=G-2NQ2RH7NV1&l=dataLayer&cx=c	92.9KB	0ms
• https://www.googletagmanager.com/gtag/destination?id=AW-10822183795&l=dataLayer&cx=c	82.8KB	0ms
GOOGLE MAPS	231KB	0ms
• https://maps.googleapis.com/maps/api/js?key=AlzaSyA8cmFPnlqEO84Hv4lh4KX-_ccgukklfEA&libraries=places&language=en	75.6KB	0ms
• https://maps.googleapis.com/maps-api-v3/api/js/56/3/common.js	55.8KB	0ms
• https://maps.googleapis.com/maps-api-v3/api/js/56/3/util.js	55.6KB	0ms
• https://maps.googleapis.com/maps-api-v3/api/js/56/3/controls.js	24.4KB	0ms
• https://maps.googleapis.com/maps-api-v3/api/js/56/3/places_impl.js	17.6KB	0ms
LINKEDIN ADS	19.4KB	0ms
• https://snap.lidn.com/li.lms-analytics/insight.min.js	17.0KB	0ms
GOOGLE/DOUBLECLICK ADS	3.26KB	0ms
OTHER GOOGLE APIS/SDKS	1.58KB	0ms
GOOGLE FONTS	1.13KB	0ms

N/A

User Timing marks and measures

No user timings and/or marks found.