

Performance Report for: <https://www.spectral-ai.com/>

Report generated: Tue, Mar 12, 2024 3:36 AM -0700
 Test Server Location: London, UK
 Using: Chrome 117.0.0.0, Lighthouse 11.0.0

D	Performance	Structure	L. Contentful Paint	T. Blocking Time	C. Layout Shift
	56%	85%	5.0s	436ms	0.01

Top Issues

High	Avoid enormous network payloads <small>LCP</small>	Total size was 40.8MB
Med	Use explicit width and height on image elements <small>CLS</small>	1 image found
Low	Avoid long main-thread tasks <small>TBT</small>	9 long tasks found
Low	Avoid an excessive DOM size <small>TBT</small>	650 elements
Low	Eliminate render-blocking resources <small>FCP LCP</small>	Potential savings of 33ms

Page Details



Total Page Size - 40.8MB



Total Page Requests - 43



■ HTML
 ■ JS
 ■ CSS
 ■ IMG
 ■ Video
 ■ Font
 ■ Other

How does this affect me?

Today's web user expects a fast and seamless website experience. Delivering that fast experience can result in increased visits, conversions and overall happiness.

As if you didn't need more incentive, **Google has announced that they are using page speed in their ranking algorithm.**

About GTmetrix

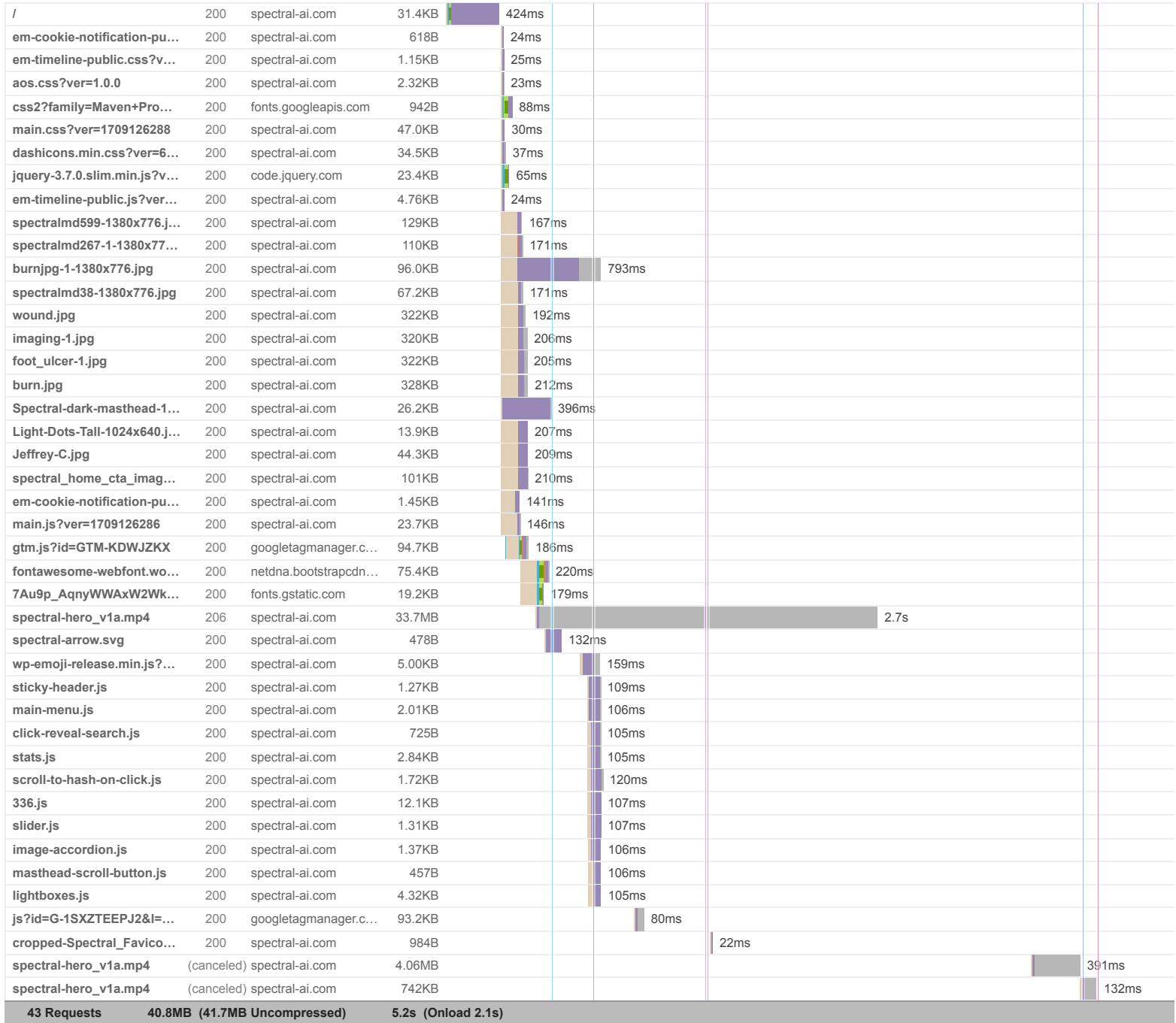


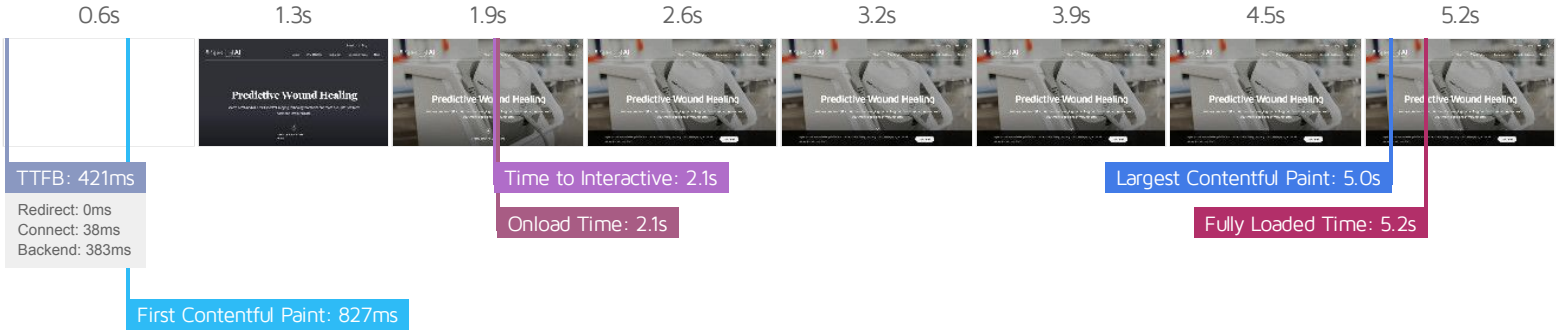
GTmetrix is developed by the good folks at **Carbon60**, a Canadian hosting company with over 28 years experience in web technology.

<https://carbon60.com/>

The waterfall chart displays the loading behaviour of your site in your selected browser. It can be used to discover simple issues such as 404's or more complex issues such as external resources blocking page rendering.

Wound Imaging and Assessment | Predictive Analytics | Spectral AI





Performance Metrics

<p>First Contentful Paint</p> <p>How quickly content like text or images are painted onto your page. A good user experience is 0.9s or less.</p>	<p>Good - Nothing to do here</p> <p>826ms</p>
<p>Speed Index</p> <p>How quickly the contents of your page are visibly populated. A good user experience is 1.3s or less.</p>	<p>OK, but consider improvement</p> <p>1.5s</p>
<p>Largest Contentful Paint</p> <p>How long it takes for the largest element of content (e.g. a hero image) to be painted on your page. A good user experience is 1.2s or less.</p>	<p>Much longer than recommended</p> <p>5.0s</p>
<p>Time to Interactive</p> <p>How long it takes for your page to become fully interactive. A good user experience is 2.5s or less.</p>	<p>Good - Nothing to do here</p> <p>2.1s</p>
<p>Total Blocking Time</p> <p>How much time is blocked by scripts during your page loading process. A good user experience is 150ms or less.</p>	<p>Much longer than recommended</p> <p>436ms</p>
<p>Cumulative Layout Shift</p> <p>How much your page's layout shifts as it loads. A good user experience is a score of 0.1 or less.</p>	<p>Good - Nothing to do here</p> <p>0.01</p>

Browser Timings

Redirect	0ms	Connect	38ms	Backend	383ms
TTFB	421ms	First Paint	827ms	DOM Int.	1.1s
DOM Loaded	1.2s	Onload	2.1s	Fully Loaded	5.2s

IMPACT AUDIT

Low

Ensure text remains visible during webfont load FCP LCP

1 font found

Leverage the `font-display` CSS feature to ensure text is user-visible while webfonts are loading.

URL

POTENTIAL SAVINGS

- <https://netdna.bootstrapcdn.com/font-awesome/4.7.0/fonts/fontawesome-webfont.woff2?v=4.7.0>

100ms

Low

Reduce JavaScript execution time TBT

518ms spent executing JavaScript

Consider reducing the time spent parsing, compiling, and executing JS. You may find delivering smaller JS payloads helps with this.

URL	TOTAL CPU TIME	SCRIPT EVALUATION	SCRIPT PARSE
https://www.spectral-ai.com/	573ms	30ms	3ms
Unattributable	537ms	20ms	0ms
https://www.spectral-ai.com/wp-content/themes/spectralmd/js/slider.js	146ms	93ms	0ms
https://www.spectral-ai.com/wp-content/themes/spectralmd/js/image-accordion.js	98ms	61ms	0ms
https://www.googletagmanager.com/gtm.js?id=GTM-KDWJZKX	89ms	82ms	4ms
https://www.spectral-ai.com/wp-content/themes/spectralmd/js/main.js?ver=1709126286	83ms	82ms	1ms
https://www.spectral-ai.com/wp-content/themes/spectralmd/js/336.js	82ms	19ms	0ms
https://www.spectral-ai.com/wp-content/themes/spectralmd/js/sticky-header.js	77ms	2ms	0ms
https://code.jquery.com/jquery-3.7.0.slim.min.js?ver=6.3.3	72ms	50ms	1ms
https://www.googletagmanager.com/gtag/js?id=G-1SXZTEEPJ2&l=dataLayer&cx=c	65ms	59ms	4ms

Low

Properly size images

Potential savings of 27.3KB

Serve images that are appropriately-sized to save cellular data and improve load time.

URL	RESOURCE SIZE	POTENTIAL SAVINGS
https://www.spectral-ai.com/wp-content/uploads/2023/04/Jeffrey_C.jpg	44.1KB	27.3KB

Low

Efficiently encode images

Potential savings of 929KB

Optimized images load faster and consume less cellular data.

URL	RESOURCE SIZE	POTENTIAL SAVINGS
https://www.spectral-ai.com/wp-content/uploads/2023/05/burn.jpg	328KB	236KB
https://www.spectral-ai.com/wp-content/uploads/2023/05/wound.jpg	322KB	233KB
https://www.spectral-ai.com/wp-content/uploads/2023/05/foot_ulcer-1.jpg	322KB	231KB
https://www.spectral-ai.com/wp-content/uploads/2023/05/imaging-1.jpg	320KB	229KB

Low

Reduce unused CSS FCP LCP

Potential savings of 73.2KB

Reduce unused rules from stylesheets and defer CSS not used for above-the-fold content to decrease bytes consumed by network activity.

URL	TRANSFER SIZE	POTENTIAL SAVINGS
• https://www.spectral-ai.com/wp-content/themes/spectralmd/css/main.css?ver=1709126288	47.0KB	38.7KB
• https://www.spectral-ai.com/wp-includes/css/dashicons.min.css?ver=6.3.3	34.5KB	34.5KB

Low

Serve images in next-gen formats

Potential savings of 1.39MB

Image formats like WebP and AVIF often provide better compression than PNG or JPEG, which means faster downloads and less data consumption.

URL	RESOURCE SIZE	POTENTIAL SAVINGS
https://www.spectral-ai.com/wp-content/uploads/2023/05/burn.jpg	328KB	292KB
https://www.spectral-ai.com/wp-content/uploads/2023/05/wound.jpg	322KB	286KB
https://www.spectral-ai.com/wp-content/uploads/2023/05/foot_ulcer-1.jpg	322KB	286KB
https://www.spectral-ai.com/wp-content/uploads/2023/05/imaging-1.jpg	320KB	284KB
https://www.spectral-ai.com/wp-content/uploads/2023/06/spectralmd599-1380x776.jpg	129KB	62.4KB
https://www.spectral-ai.com/wp-content/uploads/2023/05/spectral_home_cta_image_50-1380x776.jpg	101KB	55.2KB
https://www.spectral-ai.com/wp-content/uploads/2023/05/spectralmd267-1-1380x776.jpg	110KB	47.1KB
https://www.spectral-ai.com/wp-content/uploads/2023/05/burnjpg-1-1380x776.jpg	95.8KB	46.0KB
https://www.spectral-ai.com/wp-content/uploads/2023/05/spectralmd38-1380x776.jpg	67.0KB	32.1KB
https://www.spectral-ai.com/wp-content/uploads/2023/04/Jeffrey-C.jpg	44.1KB	16.2KB
https://www.spectral-ai.com/wp-content/uploads/2023/04/Spectral-dark-masthead-1024x370.jpg	26.2KB	11.6KB

Low

Reduce initial server response time FCP LCP

Root document took 383ms

Keep the server response time for the main document short because all other requests depend on it.

URL	TIME SPENT
• https://www.spectral-ai.com/	383ms

Low

Defer offscreen images

Potential savings of 1.27MB

Consider lazy-loading offscreen and hidden images after all critical resources have finished loading to lower time to interactive.

URL	RESOURCE SIZE	POTENTIAL SAVINGS
https://www.spectral-ai.com/wp-content/uploads/2023/05/burn.jpg	328KB	328KB
https://www.spectral-ai.com/wp-content/uploads/2023/05/foot_ulcer-1.jpg	322KB	322KB
https://www.spectral-ai.com/wp-content/uploads/2023/05/imaging-1.jpg	320KB	320KB
https://www.spectral-ai.com/wp-content/uploads/2023/06/spectralmd599-1380x776.jpg	129KB	129KB
https://www.spectral-ai.com/wp-content/uploads/2023/05/spectralmd267-1-1380x776.jpg	110KB	110KB
https://www.spectral-ai.com/wp-content/uploads/2023/05/burnjpg-1-1380x776.jpg	95.8KB	95.8KB

Low

Avoid non-composited animations CLS

4 animated elements found

Animations which are not composited can be janky and increase CLS.

ELEMENT

NAME

Next slide

```
<button class="splide__arrow splide__arrow--next" type="button" aria-controls="splide01-track"
aria-label="Next slide">
```

Unsupported CSS Property: border-left-color

border-left-color

Unsupported CSS Property: border-left-width

border-left-width

Unsupported CSS Property: border-right-color

border-right-color

Unsupported CSS Property: border-right-width

border-right-width

Unsupported CSS Property: border-top-color

border-top-color

Unsupported CSS Property: border-top-width

border-top-width

Unsupported CSS Property: border-bottom-color

border-bottom-color

Unsupported CSS Property: border-bottom-width

border-bottom-width

Go to last slide

```
<button class="splide__arrow splide__arrow--prev" type="button" aria-controls="splide01-track"
aria-label="Go to last slide">
```

Unsupported CSS Property: border-left-color

border-left-color

Unsupported CSS Property: border-left-width

border-left-width

Unsupported CSS Property: border-right-color

border-right-color

Unsupported CSS Property: border-right-width

border-right-width

Unsupported CSS Property: border-top-color

border-top-color

Unsupported CSS Property: border-top-width

border-top-width

Unsupported CSS Property: border-bottom-color

border-bottom-color

Unsupported CSS Property: border-bottom-width

border-bottom-width

div#splide06 > div.splide__arrows > button.splide__arrow > i.fa

```
<i class="fa fa-caret-left">
```

Unsupported CSS Property: color

color

Previous

```
<button class="splide__arrow splide__arrow--prev" aria-controls="splide06-track" disabled=""
aria-label="Previous slide">
```

Unsupported CSS Property: border-bottom-color

border-bottom-color

Unsupported CSS Property: border-left-color

border-left-color

Unsupported CSS Property: border-right-color

border-right-color

Unsupported CSS Property: border-top-color

border-top-color

LOW

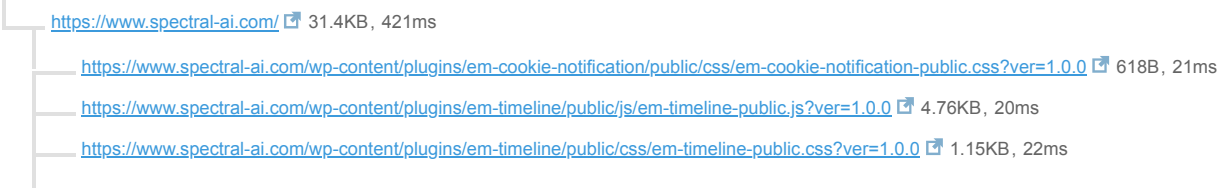
Avoid chaining critical requests FCP LCP

10 chains found

The Critical Request Chains below show you what resources are loaded with a high priority. Consider reducing the length of chains, reducing the download size of resources, or deferring the download of unnecessary resources to improve page load.

Maximum critical path latency: 815ms

INITIAL NAVIGATION



- <https://code.jquery.com/jquery-3.7.0.slim.min.js?ver=6.3.3> 23.8KB, 62ms
- <https://www.spectral-ai.com/wp-content/plugins/em-timeline/public/css/aos.css?ver=1.0.0> 2.32KB, 21ms
- <https://www.spectral-ai.com/wp-content/plugins/em-cookie-notification/public/js/em-cookie-notification-public.js?ver=1.0.0> 1.45KB, 32ms
- <https://www.spectral-ai.com/wp-includes/css/dashicons.min.css?ver=6.3.3> 34.5KB, 35ms
- <https://www.spectral-ai.com/wp-content/themes/spectralmd/js/main.js?ver=1709126286> 23.7KB, 26ms
- <https://fonts.googleapis.com/css2?family=Maven+Pro%3Awght%40400%3B500%3B600%3B700&display=swap&ver=1.0> 942B, 86ms
- https://fonts.gstatic.com/s/mavenpro/v33/7Au9p_AgnyWWAxW2Wk3GzWQI.woff2 19.7KB, 59ms
- <https://www.spectral-ai.com/wp-content/themes/spectralmd/css/main.css?ver=1709126288> 47.0KB, 27ms
- <https://netdna.bootstrapcdn.com/font-awesome/4.7.0/fonts/fontawesome-webfont.woff2?v=4.7.0> 76.0KB, 100ms

Low **Reduce unused JavaScript** LCP Potential savings of 88.5KB

Reduce unused JavaScript and defer loading scripts until they are required to decrease bytes consumed by network activity.

URL	TRANSFER SIZE	POTENTIAL SAVINGS
https://www.googletagmanager.com/gtm.js?id=GTM-KDWJZKX	95.1KB	48.2KB
https://www.googletagmanager.com/gtag/js?id=G-1SXZTEEPJ2&l=dataLayer&cx=c	93.3KB	40.3KB

N/A **Largest Contentful Paint element** LCP 5,050 ms

This is the largest contentful element painted within the viewport.

ELEMENT

DeepView machine close up

```

```

PHASE	% OF LCP	TIMING
TTFB	8%	421ms
Load Delay	3%	142ms
Load Time	1%	48ms
Render Delay	88%	4.4s

N/A **Avoid serving legacy JavaScript to modern browsers** TBT Potential savings of 22.8KB

Polyfills and transforms enable legacy browsers to use new JavaScript features. However, many aren't necessary for modern browsers. For your bundled JavaScript, adopt a modern script deployment strategy using module/nomodule feature detection to reduce the amount of code shipped to modern browsers, while retaining support for legacy browsers.

URL	POTENTIAL SAVINGS
https://www.spectral-ai.com/wp-content/themes/spectralmd/js/lightboxes.js Line:0 Column:11831	11.7KB Reflect.construct
https://www.spectral-ai.com/wp-content/themes/spectralmd/js/main.js?ver=1709126286 Line:0 Column:36192	11.0KB Array.prototype.filter
Line:0 Column:37100	Array.prototype.map
Line:0 Column:37283	Object.keys
Line:0 Column:60126	@babel/plugin-transform-classes
https://www.spectral-ai.com/wp-content/plugins/em-timeline/public/js/em-timeline-public.js?ver=1.0.0 Line:0 Column:11881	55B @babel/plugin-transform-classes

N/A

Avoid large layout shifts CLS

5 elements found

These DOM elements contribute most to the CLS of the page.

ELEMENT	CLS CONTRIBUTION
SCROLL DOWN TO LEARN MORE <div class="masthead__scrolldown">	0.00
Predictive Wound Healing <h1 class="masthead__title">	0.00
Predictive Wound Healing <h1 class="masthead__title">	0.00
We've combined AI + multispectral imaging technology for faster and more accurate... <div class="masthead__content-body">	0.00
Investors Blog SEARCH About Show submenu Why It Matters Show submenu Technology... <nav id="js-site-navigation" class="site-header__navigation">	0.00

N/A

Minimize main-thread work TBT

Main-thread busy for 2.0s

Consider reducing the time spent parsing, compiling and executing JS. You may find delivering smaller JS payloads helps with this.

CATEGORY	TIME SPENT
Other	739ms
Style & Layout	565ms
Script Evaluation	525ms
Rendering	67ms
Parse HTML & CSS	63ms
Script Parsing & Compilation	39ms
Garbage Collection	7ms

N/A **Reduce the impact of third-party code** TBT Third-party code blocked the main thread for 6ms

Third-party code can significantly impact load performance. Limit the number of redundant third-party providers and try to load third-party code after your page has primarily finished loading.

THIRD-PARTY	TRANSFER SIZE	MAIN-THREAD BLOCKING TIME
GOOGLE TAG MANAGER	188KB	6ms
• https://www.googletagmanager.com/gtag/js?id=G-1SXZTEEPJ2&l=dataLayer&cx=c	93.3KB	6ms
• https://www.googletagmanager.com/gtm.js?id=GTM-KDWJZKX	95.1KB	0ms
BOOTSTRAP CDN	76.0KB	0ms
• https://netdna.bootstrapcdn.com/font-awesome/4.7.0/fonts/fontawesome-webfont.woff2?v=4.7.0	76.0KB	0ms
JQUERY CDN	23.8KB	0ms
• https://code.jquery.com/jquery-3.7.0.slim.min.js?ver=6.3.3	23.8KB	0ms
GOOGLE FONTS	20.7KB	0ms
• https://fonts.gstatic.com/s/mavenpro/v33/7Au9p_AqnyWWAxW2Wk3GzWQI.woff2	19.7KB	0ms

N/A **User Timing marks and measures**

No user timings and/or marks found.