



Performance Report for: http://www.meesterchauffeurs.nl/

Report generated: Sun, Mar 10, 2024 10:30 AM -0700
 Test Server Location: London, UK
 Using: Chrome 117.0.0.0, Lighthouse 11.0.0

A	Performance	Structure	L. Contentful Paint	T. Blocking Time	C. Layout Shift
	99%	96%	684ms	5ms	0

Top Issues

Med-Low	Serve static assets with an efficient cache policy	Potential savings of 333KB
Med-Low	Use a Content Delivery Network (CDN)	15 resources found
Low	Avoid enormous network payloads <small>LCP</small>	Total size was 1.92MB
Low	Avoid an excessive DOM size <small>TBT</small>	284 elements
Low	Avoid multiple page redirects <small>FCP LCP</small>	Potential savings of 44ms

Page Details



Total Page Size - 1.92MB



Total Page Requests - 28



■ HTML
 ■ JS
 ■ CSS
 ■ IMG
 ■ Video
 ■ Font
 ■ Other

How does this affect me?

Today's web user expects a fast and seamless website experience. Delivering that fast experience can result in increased visits, conversions and overall happiness.

As if you didn't need more incentive, **Google has announced that they are using page speed in their ranking algorithm.**

About GTmetrix

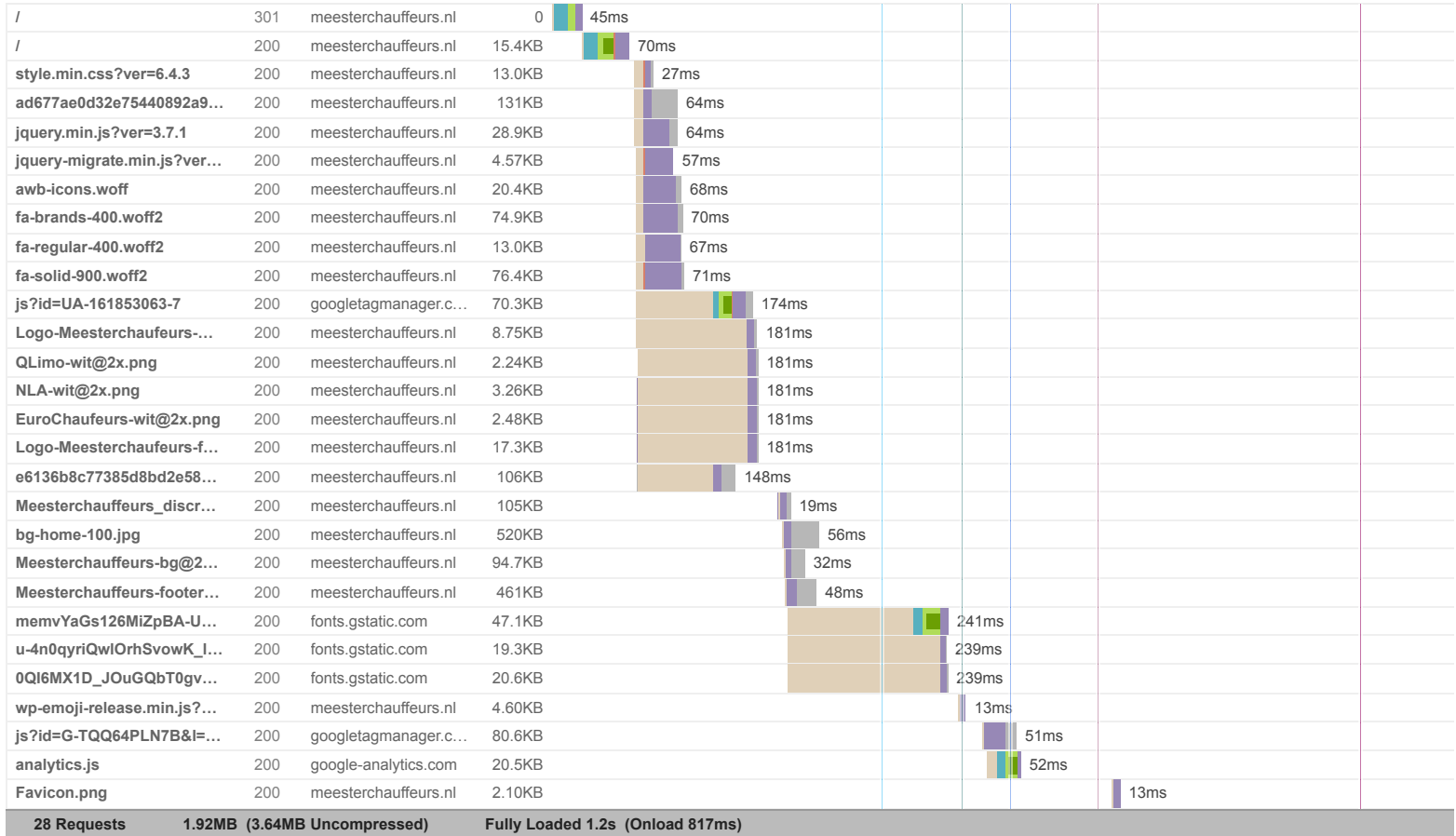


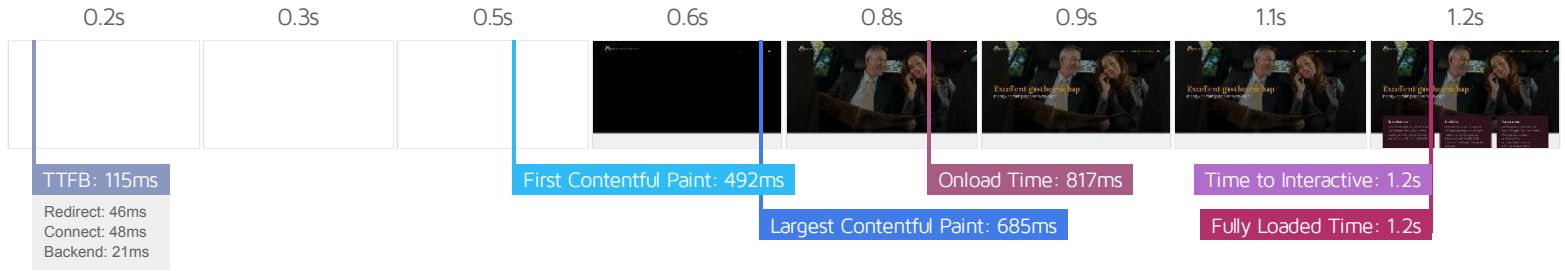
GTmetrix is developed by the good folks at **Carbon60**, a Canadian hosting company with over 28 years experience in web technology.

<https://carbon60.com/>

The waterfall chart displays the loading behaviour of your site in your selected browser. It can be used to discover simple issues such as 404's or more complex issues such as external resources blocking page rendering.

Meesterchauffeurs – Hoogwaardig personenvervoer





Performance Metrics

<p>First Contentful Paint</p> <p>How quickly content like text or images are painted onto your page. A good user experience is 0.9s or less.</p>	<p>Good - Nothing to do here</p> <p>491ms</p>	<p>Time to Interactive</p> <p>How long it takes for your page to become fully interactive. A good user experience is 2.5s or less.</p>	<p>Good - Nothing to do here</p> <p>1.2s</p>
<p>Speed Index</p> <p>How quickly the contents of your page are visibly populated. A good user experience is 1.3s or less.</p>	<p>Good - Nothing to do here</p> <p>990ms</p>	<p>Total Blocking Time</p> <p>How much time is blocked by scripts during your page loading process. A good user experience is 150ms or less.</p>	<p>Good - Nothing to do here</p> <p>5ms</p>
<p>Largest Contentful Paint</p> <p>How long it takes for the largest element of content (e.g. a hero image) to be painted on your page. A good user experience is 1.2s or less.</p>	<p>Good - Nothing to do here</p> <p>684ms</p>	<p>Cumulative Layout Shift</p> <p>How much your page's layout shifts as it loads. A good user experience is a score of 0.1 or less.</p>	<p>Good - Nothing to do here</p> <p>0</p>

Browser Timings

Redirect	46ms	Connect	48ms	Backend	21ms
TTFB	115ms	First Paint	492ms	DOM Int.	608ms
DOM Loaded	611ms	Onload	817ms	Fully Loaded	1.2s

IMPACT AUDIT

Low **Efficiently encode images** Potential savings of 622KB

Optimized images load faster and consume less cellular data.

URL	RESOURCE SIZE	POTENTIAL SAVINGS
https://www.meesterchauffeurs.nl/wp-content/uploads/2021/09/bg-home-100.jpg	520KB	312KB
https://www.meesterchauffeurs.nl/wp-content/uploads/2021/09/Meesterchauffeurs-footer-100.jpg	461KB	310KB

Low **Ensure text remains visible during webfont load** FCP LCP 3 fonts found

Leverage the `font-display` CSS feature to ensure text is user-visible while webfonts are loading.

URL	POTENTIAL SAVINGS
https://fonts.gstatic.com/s/opensans/v40/memvYaGs126MiZpBA-UvWbX2vVnXBbObj2OVTS-muw.woff2	53ms
https://fonts.gstatic.com/s/merriweather/v30/u-4n0gyriQwIOrhSvowK_I52xwNZWMf6.woff2	50ms
https://fonts.gstatic.com/s/lora/v35/0QI6MX1D_JOuGQbT0gvTJPa787z5vB.JBkq0.woff2	51ms

Low **Avoid long main-thread tasks** TBT 3 long tasks found

Lists the longest tasks on the main thread, useful for identifying worst contributors to input delay.

URL	START TIME	DURATION
https://www.meesterchauffeurs.nl/	289ms	122ms
https://www.meesterchauffeurs.nl/wp-content/uploads/fusion-scripts/e6136b8c77385d8bd2e58bf300140727.min.js?ver=3.11.6	421ms	96ms
https://www.meesterchauffeurs.nl/	1.2s	55ms

Low **Reduce JavaScript execution time** TBT 211ms spent executing JavaScript

Consider reducing the time spent parsing, compiling, and executing JS. You may find delivering smaller JS payloads helps with this.

URL	TOTAL CPU TIME	SCRIPT EVALUATION	SCRIPT PARSE
https://www.meesterchauffeurs.nl/	296ms	22ms	2ms
Unattributable	141ms	8ms	0ms
https://www.meesterchauffeurs.nl/wp-content/uploads/fusion-scripts/e6136b8c77385d8bd2e58bf300140727.min.js?ver=3.11.6	99ms	36ms	27ms
https://www.meesterchauffeurs.nl/wp-includes/js/jquery/jquery.min.js?ver=3.7.1	87ms	45ms	1ms
https://www.googletagmanager.com/gtag/js?id=UA-161853063-7	69ms	64ms	3ms

Low **Reduce unused CSS** FCP LCP Potential savings of 135KB

Reduce unused rules from stylesheets and defer CSS not used for above-the-fold content to decrease bytes consumed by network activity.

URL	TRANSFER SIZE	POTENTIAL SAVINGS
https://www.meesterchauffeurs.nl/wp-content/uploads/fusion-styles/ad677ae0d32e75440892a965bc1d45dd.min.css?ver=3.11.6	131KB	122KB
https://www.meesterchauffeurs.nl/wp-includes/css/dist/block-library/style.min.css?ver=6.4.3	13.1KB	13.1KB

Low **Serve images in next-gen formats** Potential savings of 906KB

Image formats like WebP and AVIF often provide better compression than PNG or JPEG, which means faster downloads and less data consumption.

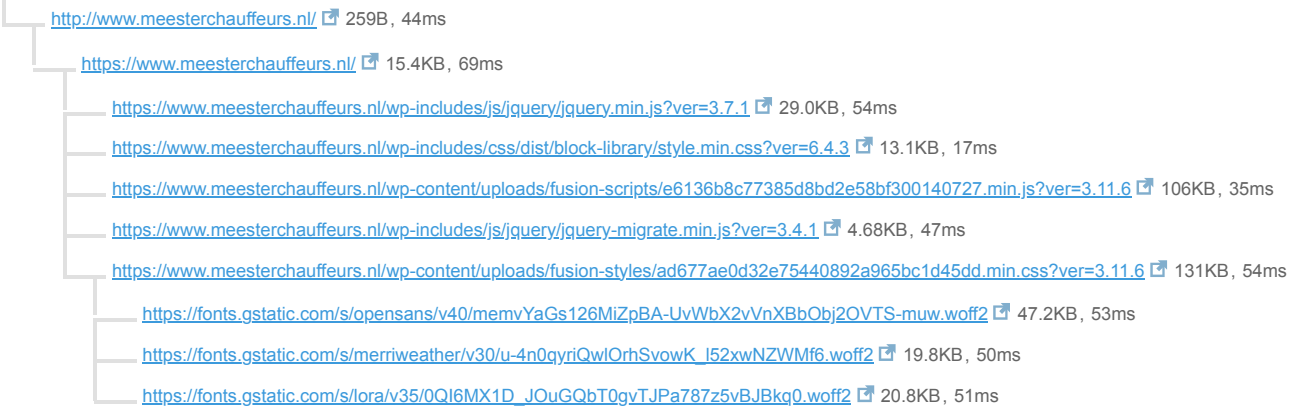
URL	RESOURCE SIZE	POTENTIAL SAVINGS
https://www.meesterchauffeurs.nl/wp-content/uploads/2021/09/bg-home-100.jpg	520KB	435KB
https://www.meesterchauffeurs.nl/wp-content/uploads/2021/09/Meesterchauffeurs-footer-100.jpg	461KB	401KB
https://www.meesterchauffeurs.nl/wp-content/uploads/2021/09/Meesterchauffeurs-bg@2x-8.png	94.6KB	39.1KB
https://www.meesterchauffeurs.nl/wp-content/uploads/2021/09/Meesterchauffeurs_discreet_en_betrouwbaar.jpg	105KB	22.8KB
https://www.meesterchauffeurs.nl/wp-content/uploads/2021/09/Logo-Meesterchauffeurs-footer@4x-400x91.png	17.2KB	9.02KB

Low **Avoid chaining critical requests** FCP LCP 7 chains found

The Critical Request Chains below show you what resources are loaded with a high priority. Consider reducing the length of chains, reducing the download size of resources, or deferring the download of unnecessary resources to improve page load.

Maximum critical path latency: **593ms**

INITIAL NAVIGATION



Low **Reduce unused JavaScript** LCP Potential savings of 156KB

Reduce unused JavaScript and defer loading scripts until they are required to decrease bytes consumed by network activity.

URL	TRANSFER SIZE	POTENTIAL SAVINGS
https://www.meesterchauffeurs.nl/wp-content/uploads/fusion-scripts/e6136b8c77385d8bd2e58bf300140727.min.js?ver=3.11.6	106KB	85.4KB
https://www.googletagmanager.com/gtag/js?id=G-TQQ64PLN7B&l=data_layer&cx=c	80.7KB	39.1KB
https://www.googletagmanager.com/gtag/js?id=UA-161853063-7	70.7KB	31.8KB

N/A **Largest Contentful Paint element** LCP 680 ms

This is the largest contentful element painted within the viewport.

ELEMENT

Excellent gastheerschap hoogwaardig personenvervoer

```
<div class="fusion-fullwidth fullwidth-box fusion-builder-row-2 fusion-flex-container ..." style="--awb-border-radius-top-left: 0px; --awb-border-radius-top-right: 0px;">
```

PHASE	% OF LCP	TIMING
TTFB	17%	115ms
Load Delay	33%	225ms
Load Time	3%	18ms
Render Delay	48%	326ms

N/A **Eliminate render-blocking resources** FCP LCP Potential savings of 12ms

Resources are blocking the first paint of your page. Consider delivering critical JS/CSS inline and deferring all non-critical JS/styles.

Resources that **may** be contributing to render-blocking include:

URL	TRANSFER SIZE	DOWNLOAD TIME
• https://www.meesterchauffeurs.nl/wp-content/uploads/fusion-styles/ad677ae0d32e75440892a965bc1d45dd.min.css?ver=3.11.6	131KB	750ms
• https://www.meesterchauffeurs.nl/wp-includes/js/jquery/jquery.min.js?ver=3.7.1	29.0KB	150ms

N/A **Reduce initial server response time** FCP LCP Root document took 20ms

Keep the server response time for the main document short because all other requests depend on it.

URL	TIME SPENT
• https://www.meesterchauffeurs.nl/	20ms

N/A **Avoid serving legacy JavaScript to modern browsers** TBT Potential savings of 7.87KB

Polyfills and transforms enable legacy browsers to use new JavaScript features. However, many aren't necessary for modern browsers. For your bundled JavaScript, adopt a modern script deployment strategy using module/nomodule feature detection to reduce the amount of code shipped to modern browsers, while retaining support for legacy browsers.

URL	POTENTIAL SAVINGS
https://www.meesterchauffeurs.nl/wp-content/uploads/fusion-scripts/e6136b8c77385d8bd2e58bf300140727.min.js?ver=3.11.6 Line:10 Column:81696 Line:24 Column:9272	7.87KB <code>Array.prototype.filter</code> <code>@babel/plugin-transform-classes</code>

N/A **Avoid large layout shifts** CLS 3 elements found

These DOM elements contribute most to the CLS of the page.

ELEMENT	CLS CONTRIBUTION
Over ons 	0.00
Aanbod 	0.00
Contact 	0.00

N/A **Minimize main-thread work** TBT Main-thread busy for 793ms

Consider reducing the time spent parsing, compiling and executing JS. You may find delivering smaller JS payloads helps with this.

CATEGORY	TIME SPENT
Style & Layout	250ms
Script Evaluation	229ms
Other	224ms
Script Parsing & Compilation	38ms
Parse HTML & CSS	32ms
Garbage Collection	9ms
Rendering	9ms

N/A **Reduce the impact of third-party code** TBT Total size was 260KB

Third-party code can significantly impact load performance. Limit the number of redundant third-party providers and try to load third-party code after your page has primarily finished loading.

THIRD-PARTY	TRANSFER SIZE	MAIN-THREAD BLOCKING TIME
GOOGLE TAG MANAGER	151KB	0ms
• https://www.googletagmanager.com/gtag/js?id=G-TQQ64PLN7B&l=dataLayer&cx=c	80.7KB	0ms
• https://www.googletagmanager.com/gtag/js?id=UA-161853063-7	70.7KB	0ms
GOOGLE FONTS	87.8KB	0ms
• https://fonts.gstatic.com/s/opensans/v40/memvYaGs126MiZpBA-UvWbX2vVnXBbObj2OVTS-muw.woff2	47.2KB	0ms
• https://fonts.gstatic.com/s/lora/v35/0QI6MX1D_JOuGQbT0gvTJPa787z5vB.JBkq0.woff2	20.8KB	0ms
• https://fonts.gstatic.com/s/merriweather/v30/u-4n0gyriQwIORhSvowK_I52xwNZWMf6.woff2	19.8KB	0ms
GOOGLE ANALYTICS	20.8KB	0ms
• https://www.google-analytics.com/analytics.js	20.8KB	0ms

N/A

User Timing marks and measures

No user timings and/or marks found.