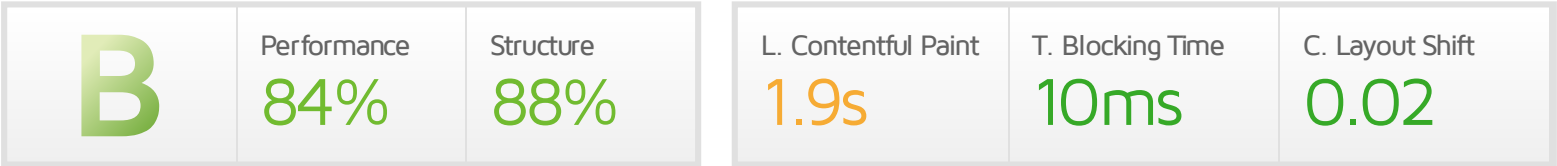




Performance Report for: <http://www.impactchauffeurs.co.uk/>

Report generated: Sun, Mar 10, 2024 12:50 PM -0700
 Test Server Location: London, UK
 Using: Chrome 117.0.0.0, Lighthouse 11.0.0



Top Issues

High	Reduce initial server response time <small>FCP LCP</small>	Root document took 777ms
Med	Use explicit width and height on image elements <small>CLS</small>	5 images found
Med	Serve static assets with an efficient cache policy	Potential savings of 1.30MB
Med-Low	Use a Content Delivery Network (CDN)	26 resources found
Med-Low	Avoid multiple page redirects <small>FCP LCP</small>	Potential savings of 517ms

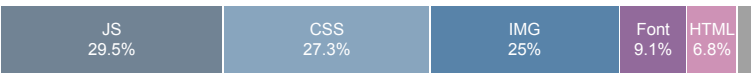
Page Details



Total Page Size - 1.51MB



Total Page Requests - 44



How does this affect me?

Today's web user expects a fast and seamless website experience. Delivering that fast experience can result in increased visits, conversions and overall happiness.

As if you didn't need more incentive, **Google has announced that they are using page speed in their ranking algorithm.**

About GTmetrix

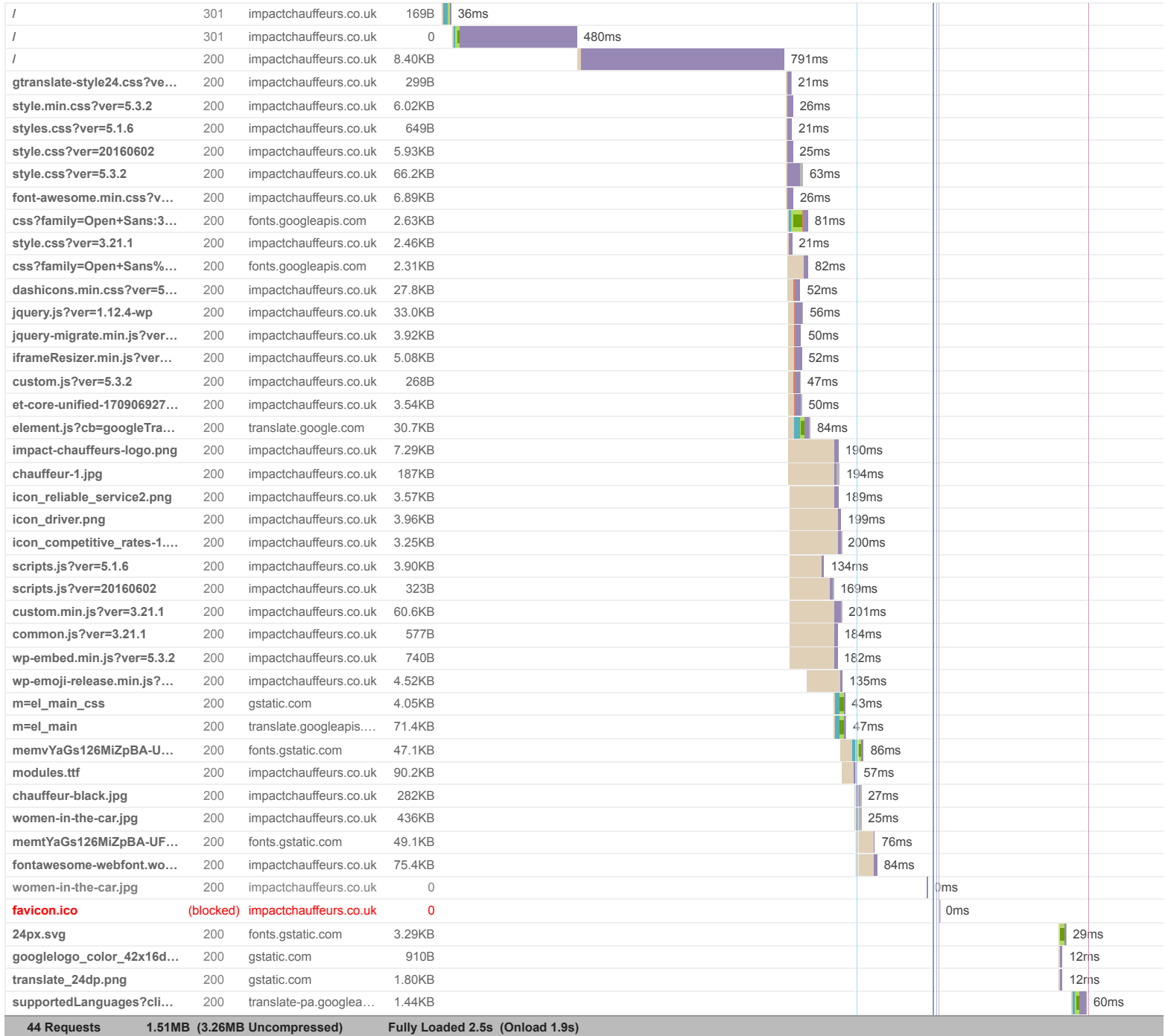


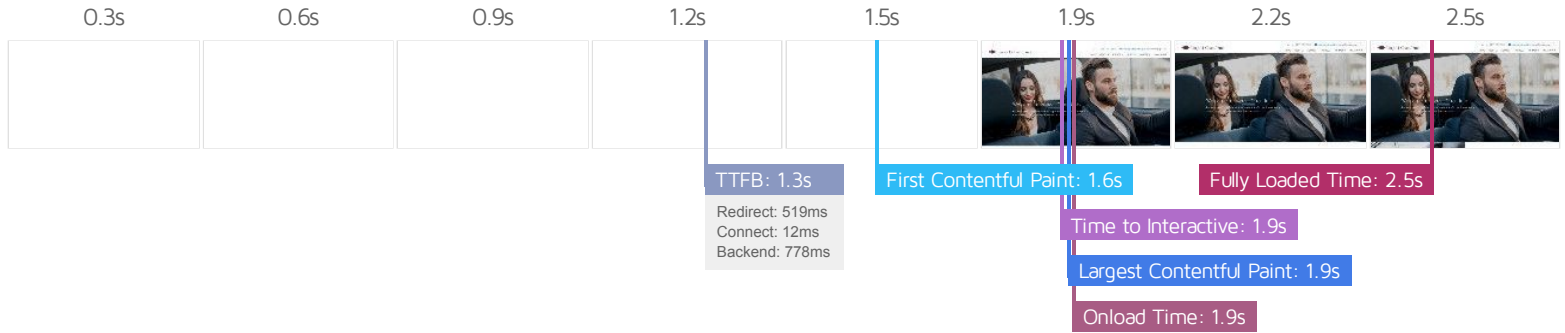
GTmetrix is developed by the good folks at **Carbon60**, a Canadian hosting company with over 28 years experience in web technology.

<https://carbon60.com/>

The waterfall chart displays the loading behaviour of your site in your selected browser. It can be used to discover simple issues such as 404's or more complex issues such as external resources blocking page rendering.

Home - Impact Chauffeurs





Performance Metrics

<p>First Contentful Paint</p> <p>How quickly content like text or images are painted onto your page. A good user experience is 0.9s or less.</p>	<p>Longer than recommended</p> <p>1.6s</p>	<p>Time to Interactive</p> <p>How long it takes for your page to become fully interactive. A good user experience is 2.5s or less.</p>	<p>Good - Nothing to do here</p> <p>1.9s</p>
<p>Speed Index</p> <p>How quickly the contents of your page are visibly populated. A good user experience is 1.3s or less.</p>	<p>Longer than recommended</p> <p>1.9s</p>	<p>Total Blocking Time</p> <p>How much time is blocked by scripts during your page loading process. A good user experience is 150ms or less.</p>	<p>Good - Nothing to do here</p> <p>10ms</p>
<p>Largest Contentful Paint</p> <p>How long it takes for the largest element of content (e.g. a hero image) to be painted on your page. A good user experience is 1.2s or less.</p>	<p>Longer than recommended</p> <p>1.9s</p>	<p>Cumulative Layout Shift</p> <p>How much your page's layout shifts as it loads. A good user experience is a score of 0.1 or less.</p>	<p>Good - Nothing to do here</p> <p>0.02</p>

Browser Timings

Redirect	519ms	Connect	12ms	Backend	778ms
TTFB	1.3s	First Paint	1.6s	DOM Int.	1.8s
DOM Loaded	1.9s	Onload	1.9s	Fully Loaded	2.5s

IMPACT AUDIT

Low

Allow back/forward cache restoration

1 failure reason

Many navigations are performed by going back to a previous page, or forwards again. The back/forward cache (bfcache) can speed up these return navigations.

FAILURE REASON

The page has an unload handler in the main frame.
<https://impactchauffeurs.co.uk/>

FAILURE TYPE

Actionable

Low

Eliminate render-blocking resources FCP LCP

Potential savings of 42ms

Resources are blocking the first paint of your page. Consider delivering critical JS/CSS inline and deferring all non-critical JS/styles.

Resources that **may** be contributing to render-blocking include:

URL	TRANSFER SIZE	DOWNLOAD TIME
https://impactchauffeurs.co.uk/wp-includes/css/dist/block-library/style.min.css?ver=5.3.2	6.23KB	150ms
https://impactchauffeurs.co.uk/wp-content/themes/Divi/style.css?ver=5.3.2	66.2KB	1.1s
https://fonts.googleapis.com/css?family=Open+Sans:300italic,400italic,600italic,700italic,800italic,400,300,600,700,800&subset=latin,latin-ext	2.63KB	782ms
https://impactchauffeurs.co.uk/wp-content/themes/Divi-child/style.css?ver=3.21.1	2.67KB	150ms
https://impactchauffeurs.co.uk/wp-includes/css/dashicons.min.css?ver=5.3.2	28.1KB	150ms
https://impactchauffeurs.co.uk/wp-includes/js/jquery/jquery.js?ver=1.12.4-wp	33.2KB	150ms

Low

Avoid chaining critical requests FCP LCP

22 chains found

The Critical Request Chains below show you what resources are loaded with a high priority. Consider reducing the length of chains, reducing the download size of resources, or deferring the download of unnecessary resources to improve page load.

Maximum critical path latency: 1.7s

INITIAL NAVIGATION



- <https://impactchauffeurs.co.uk/wp-includes/js/jquery/jquery.js?ver=1.12.4-wp> 33.2KB, 45ms
- <https://impactchauffeurs.co.uk/wp-content/themes/Divi/js/custom.min.js?ver=3.21.1> 60.6KB, 34ms
- <https://impactchauffeurs.co.uk/wp-includes/css/dashicons.min.css?ver=5.3.2> 28.1KB, 36ms
- <https://fonts.googleapis.com/css?family=Open+Sans%3A300%2C300italic%2Cregular%2Citalic%2C600%2C600italic%2C700%2C700italic%2C800%2C800italic&ver=5.3.2> 2.31KB, 81ms
- <https://impactchauffeurs.co.uk/wp-includes/css/dist/block-library/style.min.css?ver=5.3.2> 6.23KB, 26ms
- https://translate.google.com/translate_a/element.js?cb=googleTranslateElementInit2 30.7KB, 65ms
- <https://impactchauffeurs.co.uk/wp-content/plugins/gtranslate/gtranslate-style24.css?ver=5.3.2> 508B, 20ms
- <https://impactchauffeurs.co.uk/wp-content/plugins/divi-100-hamburger-menu/assets/css/style.css?ver=20160602> 6.14KB, 24ms
- <https://impactchauffeurs.co.uk/wp-content/themes/Divi/style.css?ver=5.3.2> 66.2KB, 62ms
- <https://impactchauffeurs.co.uk/wp-content/themes/Divi/core/admin/fonts/modules.ttf> 90.5KB, 16ms
- <https://impactchauffeurs.co.uk/wp-content/themes/Divi-child/css/font-awesome.min.css?ver=4.7.0> 7.10KB, 25ms
- <https://impactchauffeurs.co.uk/wp-content/themes/Divi-child/fonts/fontawesome-webfont.woff2?v=4.7.0> 75.6KB, 15ms
- <https://fonts.googleapis.com/css?family=Open+Sans:300italic,400italic,600italic,700italic,800italic,400,300,600,700,800&subset=latin,latin-ext> 2.63KB, 80ms
- <https://fonts.gstatic.com/s/opensans/v40/memvYaGs126MiZpBA-UFUlcVXSCEkx2cmqvXIWqWuU6F.woff2> 49.3KB, 7ms
- <https://fonts.gstatic.com/s/opensans/v40/memvYaGs126MiZpBA-UvWbX2vVnXBbObj2OVTS-muw.woff2> 47.6KB, 43ms

Low **Avoid an excessive DOM size** TBT 424 elements

A large DOM will increase memory usage, cause longer style calculations, and produce costly layout reflows.

STATISTIC	ELEMENT	VALUE
Total DOM Elements		424
Maximum DOM Depth	Travel With Us 	17
Maximum Child Elements	Select LanguageAfrikaansAlbanianAmharicArabicArmenianAssameseAymaraAzerbaijaniB...	133

Low **Avoid enormous network payloads** LCP Total size was 1.52MB

Large network payloads cost users real money and are highly correlated with long load times.

URL	TRANSFER SIZE
https://impactchauffeurs.co.uk/wp-content/uploads/women-in-the-car.jpg	437KB
https://impactchauffeurs.co.uk/wp-content/uploads/chauffeur-black.jpg	283KB
https://impactchauffeurs.co.uk/wp-content/uploads/chauffeur-1.jpg	187KB
https://impactchauffeurs.co.uk/wp-content/themes/Divi/core/admin/fonts/modules.ttf	90.5KB
https://impactchauffeurs.co.uk/wp-content/themes/Divi-child/fonts/fontawesome-webfont.woff2?v=4.7.0	75.6KB
https://translate.googleapis.com/_/translate_http/_js/k=translate_http.tr.en_GB.fBJ3ykjzuHQ.O/d=1/exm=el_conf/ed=1/rs=AN8SPfqZEVtq-4C9l7j5J4G9rNqo64HR6w/m=el_main	71.9KB
https://impactchauffeurs.co.uk/wp-content/themes/Divi/style.css?ver=5.3.2	66.2KB
https://impactchauffeurs.co.uk/wp-content/themes/Divi/js/custom.min.js?ver=3.21.1	60.6KB
https://fonts.gstatic.com/s/opensans/v40/memvYaGs126MiZpBA-UFUlcVXSCEkx2cmqvXIWqWuU6F.woff2	49.3KB
https://fonts.gstatic.com/s/opensans/v40/memvYaGs126MiZpBA-UvWbX2vVnXBbObj2OVTS-muw.woff2	47.6KB

Low Properly size images Potential savings of 100KB

Serve images that are appropriately-sized to save cellular data and improve load time.

URL	RESOURCE SIZE	POTENTIAL SAVINGS
https://impactchauffeurs.co.uk/wp-content/uploads/chauffeur-1.jpg	187KB	100KB

Low Efficiently encode images Potential savings of 184KB

Optimized images load faster and consume less cellular data.

URL	RESOURCE SIZE	POTENTIAL SAVINGS
https://impactchauffeurs.co.uk/wp-content/uploads/women-in-the-car.jpg	436KB	67.6KB
https://impactchauffeurs.co.uk/wp-content/uploads/chauffeur-black.jpg	282KB	65.2KB
https://impactchauffeurs.co.uk/wp-content/uploads/chauffeur-1.jpg	187KB	51.1KB

Low Ensure text remains visible during webfont load FCP LCP 4 fonts found

Leverage the `font-display` CSS feature to ensure text is user-visible while webfonts are loading.

URL	POTENTIAL SAVINGS
https://fonts.gstatic.com/s/opensans/v40/memvYaGs126MiZpBA-UvWbX2vVnXBbObj2OVTS-muw.woff2	43ms
https://impactchauffeurs.co.uk/wp-content/themes/Divi/core/admin/fonts/modules.ttf	16ms
https://fonts.gstatic.com/s/opensans/v40/memvYaGs126MiZpBA-UFUlcVXSCEkx2cmqvXIWqWuU6F.woff2	7ms
https://impactchauffeurs.co.uk/wp-content/themes/Divi-child/fonts/fontawesome-webfont.woff2?v=4.7.0	15ms

Low Avoid long main-thread tasks TBT 3 long tasks found

Lists the longest tasks on the main thread, useful for identifying worst contributors to input delay.

URL	START TIME	DURATION
https://impactchauffeurs.co.uk/	1.6s	73ms
https://impactchauffeurs.co.uk/	1.3s	58ms
https://impactchauffeurs.co.uk/	1.5s	57ms

Low

Reduce JavaScript execution time TBT

245ms spent executing JavaScript

Consider reducing the time spent parsing, compiling, and executing JS. You may find delivering smaller JS payloads helps with this.

URL	TOTAL CPU TIME	SCRIPT EVALUATION	SCRIPT PARSE
• https://impactchauffeurs.co.uk/	677ms	72ms	2ms
• Unattributable	112ms	1ms	0ms
• https://translate.googleapis.com/_/translate_http/_/js/k=translate_http.tr.en_GB.fBJ3ykjzuHQ.O/d=1/exm=el_conf/ed=1/rs=AN8SPtqZEVtq-4C9l7j5J4G9rNqo64HR6w/m=el_main	79ms	52ms	5ms
• https://impactchauffeurs.co.uk/wp-includes/js/jquery/jquery.js?ver=1.12.4-wp	76ms	58ms	5ms
• https://impactchauffeurs.co.uk/wp-content/themes/Divi/js/custom.min.js?ver=3.21.1	61ms	38ms	9ms

Low

Reduce unused CSS FCP LCP

Potential savings of 91.6KB

Reduce unused rules from stylesheets and defer CSS not used for above-the-fold content to decrease bytes consumed by network activity.

URL	TRANSFER SIZE	POTENTIAL SAVINGS
• https://impactchauffeurs.co.uk/wp-content/themes/Divi/style.css?ver=5.3.2	66.2KB	63.5KB
• https://impactchauffeurs.co.uk/wp-includes/css/dashicons.min.css?ver=5.3.2	28.1KB	28.1KB

Low

Serve images in next-gen formats

Potential savings of 591KB

Image formats like WebP and AVIF often provide better compression than PNG or JPEG, which means faster downloads and less data consumption.

URL	RESOURCE SIZE	POTENTIAL SAVINGS
https://impactchauffeurs.co.uk/wp-content/uploads/women-in-the-car.jpg	436KB	275KB
https://impactchauffeurs.co.uk/wp-content/uploads/chauffeur-black.jpg	282KB	187KB
https://impactchauffeurs.co.uk/wp-content/uploads/chauffeur-1.jpg	187KB	130KB

Low

Minify CSS FCP LCP

Potential savings of 2.11KB

Minifying CSS files can reduce network payload sizes.

URL	TRANSFER SIZE	POTENTIAL SAVINGS
• https://impactchauffeurs.co.uk/wp-content/plugins/divi-100-hamburger-menu/assets/css/style.css?ver=20160602	6.14KB	2.11KB

Low

Avoid non-composited animations CLS

1 animated element found

Animations which are not composited can be janky and increase CLS.

ELEMENT	NAME
div.VlpgJd-ZVi9od-aZ2wEe-wOHMyf > div.VlpgJd-ZVi9od-aZ2wEe-OiiCO > svg.VlpgJd-ZVi9od-aZ2wEe > circle.VlpgJd-ZVi9od-aZ2wEe-Jt5cK <circle class="VlpgJd-ZVi9od-aZ2wEe-Jt5cK" fill="none" stroke-width="6" stroke-linecap="round" cx="33" cy="33" r="30">	spinner-dash
Unsupported CSS Property: stroke-dashoffset	h

Low

Reduce unused JavaScript LCP

Potential savings of 89.1KB

Reduce unused JavaScript and defer loading scripts until they are required to decrease bytes consumed by network activity.

URL	TRANSFER SIZE	POTENTIAL SAVINGS
https://translate.googleapis.com/_/translate_http/_js/k=translate_http.tr.en_GB.fBJ3ykjzuHQ.O/d=1/exm=el_conf/ed=1/rs=AN8SPfqZEVtq-4C9I7j5J4G9rNqo64HR6w/m=el_main	71.9KB	47.6KB
https://impactchauffeurs.co.uk/wp-content/themes/Divi/js/custom.min.js?ver=3.21.1	60.6KB	41.5KB

N/A **Largest Contentful Paint element** LCP 1,890 ms

This is the largest contentful element painted within the viewport.

ELEMENT

Welcome to Impact Chauffeurs Premium quality chauffeur services, airport trans...

```
<div class="et_pb_section et_pb_section_0 et_pb_with_background et_section_regular">
```

PHASE	% OF LCP	TIMING
TTFB	69%	1.3s
Load Delay	14%	272ms
Load Time	1%	25ms
Render Delay	15%	282ms

N/A **Avoid serving legacy JavaScript to modern browsers** TBT Potential savings of 5.81KB

Polyfills and transforms enable legacy browsers to use new JavaScript features. However, many aren't necessary for modern browsers. For your bundled JavaScript, adopt a modern script deployment strategy using module/nomodule feature detection to reduce the amount of code shipped to modern browsers, while retaining support for legacy browsers.

URL	POTENTIAL SAVINGS
https://impactchauffeurs.co.uk/wp-content/themes/Divi/js/custom.min.js?ver=3.21.1 Line:88 Column:896	5.81KB <code>Date.now</code>

N/A **Avoid large layout shifts** CLS 4 elements found

These DOM elements contribute most to the CLS of the page.

ELEMENT	CLS CONTRIBUTION
Welcome to Impact Chauffeurs Premium quality chauffeur services, airport trans... <div id="et-main-area">	0.02
(+44) 0151 440 2642 info@impactchauffeurs.co.uk Select Language Arabic Chinese ... <header id="main-header" data-height-onload="84" data-height-loaded="true" data-fixed-height-onload="84" style="top: 0px;">	0.00
HOME ABOUT US SERVICES VEHICLES CONTACT US MY ACCOUNT <div id="et-top-navigation" data-height="70" data-fixed-height="70" style="padding-left: 364px;">	0.00
MY ACCOUNT 	0.00

N/A **Minimize main-thread work** TBT Main-thread busy for 1.1s

Consider reducing the time spent parsing, compiling and executing JS. You may find delivering smaller JS payloads helps with this.

CATEGORY	TIME SPENT
Other	444ms
Style & Layout	252ms
Script Evaluation	241ms
Rendering	77ms
Parse HTML & CSS	34ms
Script Parsing & Compilation	25ms

N/A **User Timing marks and measures** 2 user timings

Consider instrumenting your app with the User Timing API to measure your app's real-world performance during key user experiences.

NAME	TYPE	START TIME	DURATION
translate:page_load_to_initialized	Measure	1.3s	1.0s
translate:initialized	Mark	2.4s	0ms

N/A **Reduce the impact of third-party code** TBT Total size was 217KB

Third-party code can significantly impact load performance. Limit the number of redundant third-party providers and try to load third-party code after your page has primarily finished loading.

THIRD-PARTY	TRANSFER SIZE	MAIN-THREAD BLOCKING TIME
GOOGLE FONTS	105KB	0ms
• https://fonts.gstatic.com/s/opensans/v40/memvYaGs126MiZpBA-UFUlcVXSCEkx2cmqvXIWqWuU6F.woff2	49.3KB	0ms
• https://fonts.gstatic.com/s/opensans/v40/memvYaGs126MiZpBA-UvWbX2vVnXBbObj2OVTS-muw.woff2	47.6KB	0ms
• Other resources	8.23KB	0ms
OTHER GOOGLE APIS/SDKS	105KB	0ms
• https://translate.googleapis.com/_/translate_http/_/js/k=translate_http.tr.en_GB.fBJ3ykjzuHQ.O/d=1/exm=el_conf/ed=1/rs=AN8SPfqZEVTq-4C9I7j5J4G9rNqo64HR6w/m=el_main	71.9KB	0ms
• https://translate.google.com/translate_a/element.js?cb=googleTranslateElementInit2	30.7KB	0ms
GOOGLE CDN	7.65KB	0ms
• https://www.gstatic.com/_/translate_http/_/ss/k=translate_http.tr.qhDXWpKopYk.L.W.O/am=wA/d=0/rs=AN8SPfq5gedF4FIOWZqYyMCNZA5tU966iq/m=el_main_css	4.56KB	0ms
