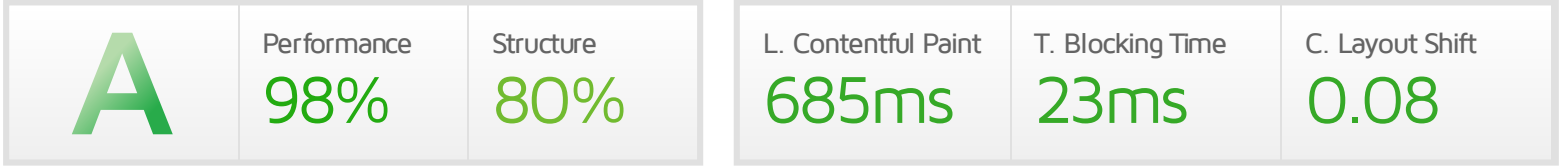




# Performance Report for:

http://www.hoarelea.com//

Report generated: Thu, Mar 14, 2024 4:51 AM -0700  
 Test Server Location: London, UK  
 Using: Chrome 117.0.0.0, Lighthouse 11.0.0



## Top Issues

High	Avoid enormous network payloads <small>LCP</small>	Total size was 4.68MB
Med	Use explicit width and height on image elements <small>CLS</small>	3 images found
Med	Serve static assets with an efficient cache policy	Potential savings of 4.55MB
Med-Low	Use a Content Delivery Network (CDN)	24 resources found
Low	Properly size images	Potential savings of 2.96MB

## Page Details



### Total Page Size - 4.66MB



### Total Page Requests - 38



## How does this affect me?

Today's web user expects a fast and seamless website experience. Delivering that fast experience can result in increased visits, conversions and overall happiness.

As if you didn't need more incentive, **Google has announced that they are using page speed in their ranking algorithm.**

## About GTmetrix

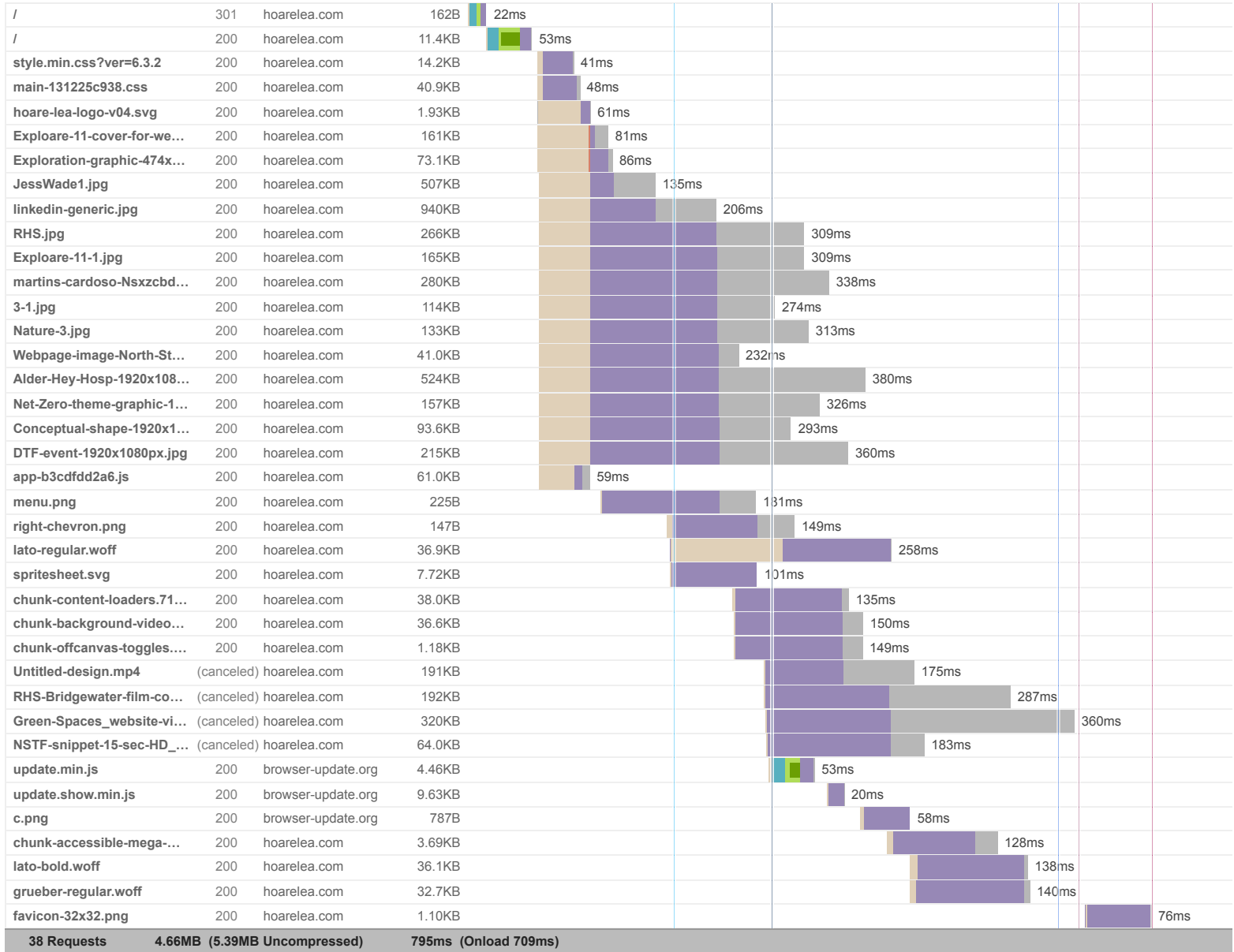


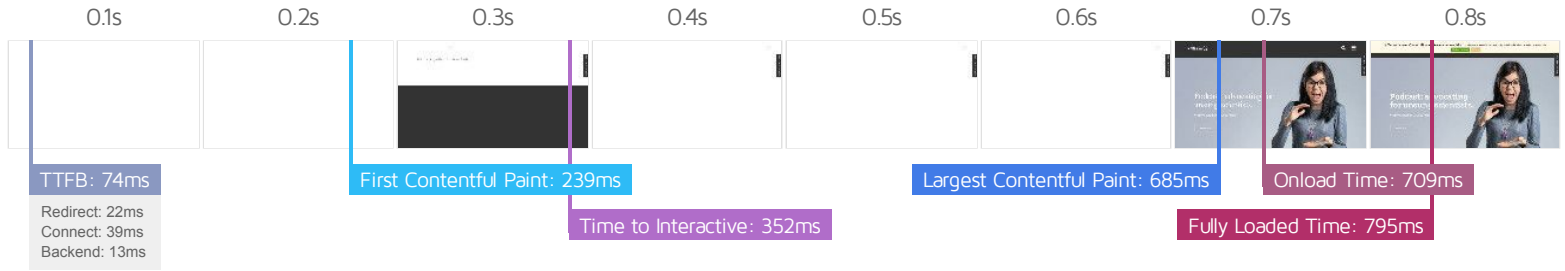
GTmetrix is developed by the good folks at **Carbon60**, a Canadian hosting company with over 28 years experience in web technology.

<https://carbon60.com/>

The waterfall chart displays the loading behaviour of your site in your selected browser. It can be used to discover simple issues such as 404's or more complex issues such as external resources blocking page rendering.

Hoare Lea | Engineers of human experiences.





### Performance Metrics

<p><b>First Contentful Paint</b></p> <p>How quickly content like text or images are painted onto your page. A good user experience is 0.9s or less.</p>	<p>Good - Nothing to do here</p> <p><b>239ms</b></p>	<p><b>Time to Interactive</b></p> <p>How long it takes for your page to become fully interactive. A good user experience is 2.5s or less.</p>	<p>Good - Nothing to do here</p> <p><b>351ms</b></p>
<p><b>Speed Index</b></p> <p>How quickly the contents of your page are visibly populated. A good user experience is 1.3s or less.</p>	<p>Good - Nothing to do here</p> <p><b>720ms</b></p>	<p><b>Total Blocking Time</b></p> <p>How much time is blocked by scripts during your page loading process. A good user experience is 150ms or less.</p>	<p>Good - Nothing to do here</p> <p><b>23ms</b></p>
<p><b>Largest Contentful Paint</b></p> <p>How long it takes for the largest element of content (e.g. a hero image) to be painted on your page. A good user experience is 1.2s or less.</p>	<p>Good - Nothing to do here</p> <p><b>685ms</b></p>	<p><b>Cumulative Layout Shift</b></p> <p>How much your page's layout shifts as it loads. A good user experience is a score of 0.1 or less.</p>	<p>Good - Nothing to do here</p> <p><b>0.08</b></p>

### Browser Timings

Redirect	22ms	Connect	39ms	Backend	13ms
TTFB	74ms	First Paint	239ms	DOM Int.	350ms
DOM Loaded	352ms	Onload	709ms	Fully Loaded	795ms

IMPACT AUDIT

**Low** Use passive listeners to improve scrolling performance 1 event listener not passive

Consider marking your touch and wheel event listeners as `passive` to improve your page's scroll performance.

URL	LOCATION
<ul style="list-style-type: none"> <li><a href="https://hoarelea.com/app/themes/hoare-lea-website-2017/assets/build/app-b3cdfd2a6.js">https://hoarelea.com/app/themes/hoare-lea-website-2017/assets/build/app-b3cdfd2a6.js</a></li> </ul>	Line:23

**Low** Efficiently encode images Potential savings of 956KB

Optimized images load faster and consume less cellular data.

URL	RESOURCE SIZE	POTENTIAL SAVINGS
<a href="https://hoarelea.com/app/uploads/2021/07/linkedin-generic.jpg">https://hoarelea.com/app/uploads/2021/07/linkedin-generic.jpg</a>	940KB	494KB
<a href="https://hoarelea.com/app/uploads/2024/03/JessWade1.jpg">https://hoarelea.com/app/uploads/2024/03/JessWade1.jpg</a>	507KB	240KB
<a href="https://hoarelea.com/app/uploads/2023/11/Exploare-11-cover-for-web-article-474x597-1.jpg">https://hoarelea.com/app/uploads/2023/11/Exploare-11-cover-for-web-article-474x597-1.jpg</a>	161KB	103KB
<a href="https://hoarelea.com/app/uploads/2023/11/RHS.jpg">https://hoarelea.com/app/uploads/2023/11/RHS.jpg</a>	266KB	69.6KB
<a href="https://hoarelea.com/app/uploads/2023/11/Exploare-11-1.jpg">https://hoarelea.com/app/uploads/2023/11/Exploare-11-1.jpg</a>	165KB	33.9KB
<a href="https://hoarelea.com/app/uploads/2022/11/Nature-3.jpg">https://hoarelea.com/app/uploads/2022/11/Nature-3.jpg</a>	133KB	15.0KB

**Low** Avoid large layout shifts CLS 2 elements found

These DOM elements contribute most to the CLS of the page.

ELEMENT	CLS CONTRIBUTION
<pre>html.js &lt;html lang="en-US" class="js cuts-the-mustard flexbox wf-active-1 wf-active-2" style="margin-top: 113px;"&gt;</pre>	0.08
<pre>Podcast: advocating for unsung scientists. &lt;h1 class="page-hero--carousel__slide-title heading--white"&gt;</pre>	0.00

**Low** Avoid an excessive DOM size TBT 585 elements

A large DOM will increase memory usage, cause longer style calculations, and produce costly layout reflows.

STATISTIC	ELEMENT	VALUE
Total DOM Elements		585
Maximum DOM Depth	Submit <span class="vh">	14
Maximum Child Elements	body.home > div > svg <svg xmlns="http://www.w3.org/2000/svg">	36

**Low** **Serve images in next-gen formats** Potential savings of 2.22MB

Image formats like WebP and AVIF often provide better compression than PNG or JPEG, which means faster downloads and less data consumption.

URL	RESOURCE SIZE	POTENTIAL SAVINGS
<a href="https://hoarelea.com/app/uploads/2021/07/linkedin-generic.jpg">https://hoarelea.com/app/uploads/2021/07/linkedin-generic.jpg</a>	940KB	741KB
<a href="https://hoarelea.com/app/uploads/2024/03/JessWade1.jpg">https://hoarelea.com/app/uploads/2024/03/JessWade1.jpg</a>	507KB	393KB
<a href="https://hoarelea.com/app/uploads/2023/11/RHS.jpg">https://hoarelea.com/app/uploads/2023/11/RHS.jpg</a>	266KB	191KB
<a href="https://hoarelea.com/app/uploads/2021/06/Alder-Hey-Hosp-1920x1080px-1.jpg">https://hoarelea.com/app/uploads/2021/06/Alder-Hey-Hosp-1920x1080px-1.jpg</a>	524KB	150KB
<a href="https://hoarelea.com/app/uploads/2023/11/Exploare-11-cover-for-web-article-474x597-1.jpg">https://hoarelea.com/app/uploads/2023/11/Exploare-11-cover-for-web-article-474x597-1.jpg</a>	161KB	136KB
<a href="https://hoarelea.com/app/uploads/2023/03/martins-cardoso-NsxzcbdF8fU-unsplash.jpg">https://hoarelea.com/app/uploads/2023/03/martins-cardoso-NsxzcbdF8fU-unsplash.jpg</a>	280KB	131KB
<a href="https://hoarelea.com/app/uploads/2023/11/Exploare-11-1.jpg">https://hoarelea.com/app/uploads/2023/11/Exploare-11-1.jpg</a>	165KB	117KB
<a href="https://hoarelea.com/app/uploads/2022/11/Nature-3.jpg">https://hoarelea.com/app/uploads/2022/11/Nature-3.jpg</a>	133KB	91.1KB
<a href="https://hoarelea.com/app/uploads/2021/06/DTF-event-1920x1080px.jpg">https://hoarelea.com/app/uploads/2021/06/DTF-event-1920x1080px.jpg</a>	215KB	88.1KB
<a href="https://hoarelea.com/app/uploads/2021/06/Exploration-graphic-474x377px.png">https://hoarelea.com/app/uploads/2021/06/Exploration-graphic-474x377px.png</a>	73.1KB	64.5KB
<a href="https://hoarelea.com/app/uploads/2021/06/Net-Zero-theme-graphic-1920x1080px.jpg">https://hoarelea.com/app/uploads/2021/06/Net-Zero-theme-graphic-1920x1080px.jpg</a>	157KB	60.8KB
<a href="https://hoarelea.com/app/uploads/2023/03/3-1.jpg">https://hoarelea.com/app/uploads/2023/03/3-1.jpg</a>	114KB	49.3KB
<a href="https://hoarelea.com/app/uploads/2021/06/Conceptual-shape-1920x108px.jpg">https://hoarelea.com/app/uploads/2021/06/Conceptual-shape-1920x108px.jpg</a>	93.6KB	44.6KB
<a href="https://hoarelea.com/app/uploads/2021/12/Webpage-image-North-Star.jpg">https://hoarelea.com/app/uploads/2021/12/Webpage-image-North-Star.jpg</a>	41.0KB	15.9KB

**Low** **Avoid multiple page redirects** FCP LCP Potential savings of 21ms

Redirects introduce additional delays before the page can be loaded.

URL	TIME SPENT
• <a href="http://www.hoarelea.com/">http://www.hoarelea.com/</a>	21ms
• <a href="https://hoarelea.com/">https://hoarelea.com/</a>	0ms

**Low** **Ensure text remains visible during webfont load** FCP LCP 3 fonts found

Leverage the `font-display` CSS feature to ensure text is user-visible while webfonts are loading.

URL	POTENTIAL SAVINGS
• <a href="https://hoarelea.com/app/themes/hoare-lea-website-2017/assets/fonts/lato/lato-regular.woff">https://hoarelea.com/app/themes/hoare-lea-website-2017/assets/fonts/lato/lato-regular.woff</a>	127ms
• <a href="https://hoarelea.com/app/themes/hoare-lea-website-2017/assets/fonts/lato/lato-bold.woff">https://hoarelea.com/app/themes/hoare-lea-website-2017/assets/fonts/lato/lato-bold.woff</a>	129ms
• <a href="https://hoarelea.com/app/themes/hoare-lea-website-2017/assets/fonts/grueber/grueber-regular.woff">https://hoarelea.com/app/themes/hoare-lea-website-2017/assets/fonts/grueber/grueber-regular.woff</a>	132ms

**Low** **Avoid long main-thread tasks** TBT 1 long task found

Lists the longest tasks on the main thread, useful for identifying worst contributors to input delay.

URL	START TIME	DURATION
• <a href="https://hoarelea.com/app/themes/hoare-lea-website-2017/assets/build/app-b3cdfdd2a6.js">https://hoarelea.com/app/themes/hoare-lea-website-2017/assets/build/app-b3cdfdd2a6.js</a>	210ms	101ms

**Low** **Reduce unused CSS** FCP LCP Potential savings of 47.1KB

Reduce unused rules from stylesheets and defer CSS not used for above-the-fold content to decrease bytes consumed by network activity.

URL	TRANSFER SIZE	POTENTIAL SAVINGS
• <a href="https://hoarelea.com/app/themes/hoare-lea-website-2017/assets/build/main-131225c938.css">https://hoarelea.com/app/themes/hoare-lea-website-2017/assets/build/main-131225c938.css</a>	40.9KB	32.9KB
• <a href="https://hoarelea.com/wp/wp-includes/css/dist/block-library/style.min.css?ver=6.3.2">https://hoarelea.com/wp/wp-includes/css/dist/block-library/style.min.css?ver=6.3.2</a>	14.2KB	14.2KB

**Low** **Defer offscreen images** Potential savings of 188KB

Consider lazy-loading offscreen and hidden images after all critical resources have finished loading to lower time to interactive.

URL	RESOURCE SIZE	POTENTIAL SAVINGS
<a href="https://hoarelea.com/app/uploads/2023/03/3-1.jpg">https://hoarelea.com/app/uploads/2023/03/3-1.jpg</a>	114KB	114KB
<a href="https://hoarelea.com/app/uploads/2021/06/Exploration-graphic-474x377px.png">https://hoarelea.com/app/uploads/2021/06/Exploration-graphic-474x377px.png</a>	73.1KB	73.1KB

**Low** **Avoid non-composited animations** CLS 9 animated elements found

Animations which are not composited can be janky and increase CLS.

ELEMENT

NAME

Close menu

```
<button type="button" class="js-search__toggle--close tcon tcon-menu--xcross tcon-transform js-search__"
aria-label="toggle search">
```

Unsupported CSS Property: flex-grow

flex-grow

Open menu

```
<button id="menu-button" type="button" class="offcanvas-toggle offcanvas-toggle--open tcon js-offcanvas-
toggle" aria-label="toggle menu" aria-expanded="false" aria-controls="menu">
```

Unsupported CSS Property: flex-grow

flex-grow

Read more

```
<a class="page-hero--carousel__slide-link billboard__cta" href="https://hoarelea.com/2022/11/03/a-step-
into-the-unknown-a-challenge-like-n..." tabindex="-1">
```

Unsupported CSS Property: visibility

visibilit

Watch here

```
<a class="page-hero--carousel__slide-link billboard__cta" href="https://hoarelea.com/2023/11/16/watch-
our-new-film-rhs-bridgewater-home-of..." tabindex="-1">
```

Unsupported CSS Property: visibility

visibilit

Our latest research

```
<a class="page-hero--carousel__slide-link billboard__cta" href="https://hoarelea.foleon.com/thought-
leadership/green-spaces/" tabindex="-1">
```

Unsupported CSS Property: visibility

visibilit

Listen now

```
<a class="page-hero--carousel__slide-link billboard__cta" href="https://hoarelea.com/2024/03/06/podcast-
iadvocating-for-unsung-scientists/" tabindex="0">
```

Unsupported CSS Property: visibility

visibilit

Guided by something more

```
<a class="page-hero--carousel__slide-link billboard__cta" href="https://hoarelea.com/2021/12/09/our-
north-star/" tabindex="-1">
```

Unsupported CSS Property: visibility

visibilit

Learn more

```
<a class="page-hero--carousel__slide-link billboard__cta" href="https://hoarelea.com/2023/12/05/a-year-
of-net-zero-carbon-leadership/" tabindex="-1">
```

Unsupported CSS Property: visibility

visibilit

Read here

```
<a class="page-hero--carousel__slide-link billboard__cta" href="https://hoarelea.com/2023/11/24/exploare-
issue-11/" tabindex="-1">
```

Unsupported CSS Property: visibility

visibilit

Low

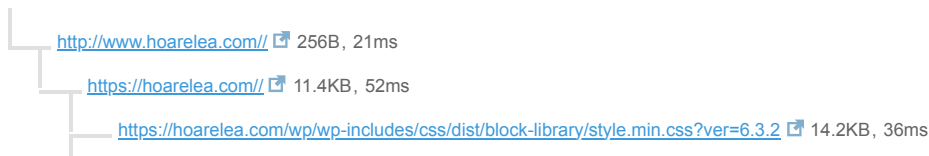
Avoid chaining critical requests FCP LCP

5 chains found

The Critical Request Chains below show you what resources are loaded with a high priority. Consider reducing the length of chains, reducing the download size of resources, or deferring the download of unnecessary resources to improve page load.

Maximum critical path latency: 653ms

INITIAL NAVIGATION



- <https://hoarelea.com/app/themes/hoare-lea-website-2017/assets/build/app-b3cdfdd2a6.js> 61.0KB, 18ms
- <https://hoarelea.com/app/themes/hoare-lea-website-2017/assets/build/main-131225c938.css> 40.9KB, 43ms
- <https://hoarelea.com/app/themes/hoare-lea-website-2017/assets/fonts/lato/lato-regular.woff> 37.1KB, 127ms
- <https://hoarelea.com/app/themes/hoare-lea-website-2017/assets/fonts/lato/lato-bold.woff> 36.3KB, 129ms
- <https://hoarelea.com/app/themes/hoare-lea-website-2017/assets/fonts/grueber/grueber-regular.woff> 32.9KB, 132ms

**Low** **Reduce unused JavaScript** LCP Potential savings of 96.1KB

Reduce unused JavaScript and defer loading scripts until they are required to decrease bytes consumed by network activity.

URL	TRANSFER SIZE	POTENTIAL SAVINGS
<a href="https://hoarelea.com/app/themes/hoare-lea-website-2017/assets/build/chunk-background-videos.a60530abde61445f3461.js">https://hoarelea.com/app/themes/hoare-lea-website-2017/assets/build/chunk-background-videos.a60530abde61445f3461.js</a>	36.6KB	36.5KB
<a href="https://hoarelea.com/app/themes/hoare-lea-website-2017/assets/build/chunk-content-loaders.718156bafb77cf23b797.js">https://hoarelea.com/app/themes/hoare-lea-website-2017/assets/build/chunk-content-loaders.718156bafb77cf23b797.js</a>	38.0KB	32.9KB
<a href="https://hoarelea.com/app/themes/hoare-lea-website-2017/assets/build/app-b3cdfdd2a6.js">https://hoarelea.com/app/themes/hoare-lea-website-2017/assets/build/app-b3cdfdd2a6.js</a>	61.0KB	26.7KB

**N/A** **Largest Contentful Paint element** LCP 690 ms

This is the largest contentful element painted within the viewport.

**ELEMENT**

```
Podcast: advocating for unsung scientists. With Wikipedian Dr Jess Wade Liste...
<div class="page-hero--carousel__slide slick-slide slick-current slick-active" style="background-image:
url(&quot;https://hoarelea.com/app/uploads/2024/03/JessWade1...&quot;);" data-slick-index="0" aria-hidden="false"
tabindex="-1" role="option" aria-describedby="slick-slide00">
```

PHASE	% OF LCP	TIMING
TTFB	11%	74ms
Load Delay	9%	64ms
Load Time	12%	79ms
Render Delay	68%	466ms

**N/A** **Eliminate render-blocking resources** FCP LCP Potential savings of 0 ms

Resources are blocking the first paint of your page. Consider delivering critical JS/CSS inline and deferring all non-critical JS/styles.

Resources that **may** be contributing to render-blocking include:

URL	TRANSFER SIZE	DOWNLOAD TIME
<a href="https://hoarelea.com/wp/wp-includes/css/dist/block-library/style.min.css?ver=6.3.2">https://hoarelea.com/wp/wp-includes/css/dist/block-library/style.min.css?ver=6.3.2</a>	14.2KB	150ms
<a href="https://hoarelea.com/app/themes/hoare-lea-website-2017/assets/build/main-131225c938.css">https://hoarelea.com/app/themes/hoare-lea-website-2017/assets/build/main-131225c938.css</a>	40.9KB	150ms

**N/A** **Reduce JavaScript execution time** TBT 62ms spent executing JavaScript



Consider reducing the time spent parsing, compiling, and executing JS. You may find delivering smaller JS payloads helps with this.

URL	TOTAL CPU TIME	SCRIPT EVALUATION	SCRIPT PARSE
• <a href="https://hoarelea.com/">https://hoarelea.com/</a>	161ms	4ms	1ms
• Unattributable	150ms	9ms	0ms
• <a href="https://hoarelea.com/app/themes/hoare-lea-website-2017/assets/build/app-b3cdfdd2a6.js">https://hoarelea.com/app/themes/hoare-lea-website-2017/assets/build/app-b3cdfdd2a6.js</a>	131ms	44ms	2ms

N/A **Reduce initial server response time** FCP LCP Root document took 13ms

Keep the server response time for the main document short because all other requests depend on it.

URL	TIME SPENT
• <a href="https://hoarelea.com/">https://hoarelea.com/</a>	13ms

N/A **Avoid serving legacy JavaScript to modern browsers** TBT Potential savings of 10.7KB

Polyfills and transforms enable legacy browsers to use new JavaScript features. However, many aren't necessary for modern browsers. For your bundled JavaScript, adopt a modern script deployment strategy using module/nomodule feature detection to reduce the amount of code shipped to modern browsers, while retaining support for legacy browsers.

URL	POTENTIAL SAVINGS
<a href="https://hoarelea.com/app/themes/hoare-lea-website-2017/assets/build/app-b3cdfdd2a6.js">https://hoarelea.com/app/themes/hoare-lea-website-2017/assets/build/app-b3cdfdd2a6.js</a>	10.4KB
Line:23 Column:67060	<code>@babel/plugin-transform-classes</code>
Line:23 Column:85305	<code>Array.from</code>
<a href="https://hoarelea.com/app/themes/hoare-lea-website-2017/assets/build/chunk-offcanvas-toggles.c5b594a4ba4b8474aa83.js">https://hoarelea.com/app/themes/hoare-lea-website-2017/assets/build/chunk-offcanvas-toggles.c5b594a4ba4b8474aa83.js</a>	95B
Line:0 Column:109	<code>@babel/plugin-transform-classes</code>
<a href="https://hoarelea.com/app/themes/hoare-lea-website-2017/assets/build/chunk-content-loaders.718156bafb77cf23b797.js">https://hoarelea.com/app/themes/hoare-lea-website-2017/assets/build/chunk-content-loaders.718156bafb77cf23b797.js</a>	75B
Line:0 Column:122	<code>@babel/plugin-transform-classes</code>
<a href="https://hoarelea.com/app/themes/hoare-lea-website-2017/assets/build/chunk-background-videos.a60530abde61445f3461.js">https://hoarelea.com/app/themes/hoare-lea-website-2017/assets/build/chunk-background-videos.a60530abde61445f3461.js</a>	70B
Line:0 Column:109	<code>@babel/plugin-transform-classes</code>

N/A **Minimize main-thread work** TBT Main-thread busy for 499ms

Consider reducing the time spent parsing, compiling and executing JS. You may find delivering smaller JS payloads helps with this.

CATEGORY	TIME SPENT
Other	205ms
Style & Layout	157ms
Script Evaluation	82ms
Parse HTML & CSS	26ms

## CATEGORY

## TIME SPENT

Rendering

18ms

Script Parsing &amp; Compilation

8ms

N/A

**Reduce the impact of third-party code** TBT

Total size was 15.2KB

Third-party code can significantly impact load performance. Limit the number of redundant third-party providers and try to load third-party code after your page has primarily finished loading.

## THIRD-PARTY

## TRANSFER SIZE

## MAIN-THREAD BLOCKING TIME

**BROWSER-UPDATE.ORG**

15.2KB

0ms

- <https://browser-update.org/update.show.min.js>

9.63KB

0ms

- <https://browser-update.org/update.min.js>

4.46KB

0ms

N/A

**User Timing marks and measures**

No user timings and/or marks found.