



Performance Report for: http://www.fsdtransfers.co.uk/

Report generated: Fri, Mar 8, 2024 7:14 PM -0800
 Test Server Location: London, UK
 Using: Chrome 117.0.0.0, Lighthouse 11.0.0

A	Performance	Structure	L. Contentful Paint	T. Blocking Time	C. Layout Shift
	98%	96%	379ms	25ms	0.09

Top Issues

Med	Use explicit width and height on image elements <small>CLS</small>	2 images found
Med-Low	Use a Content Delivery Network (CDN)	27 resources found
Low	Avoid large layout shifts <small>CLS</small>	2 elements found
Low	Serve static assets with an efficient cache policy	Potential savings of 15.6KB
Low	Eliminate render-blocking resources <small>FCP LCP</small>	Potential savings of 25ms

Page Details



Total Page Size - 1.41MB



Total Page Requests - 38



■ HTML
 ■ JS
 ■ CSS
 ■ IMG
 ■ Video
 ■ Font
 ■ Other

How does this affect me?

Today's web user expects a fast and seamless website experience. Delivering that fast experience can result in increased visits, conversions and overall happiness.

As if you didn't need more incentive, **Google has announced that they are using page speed in their ranking algorithm.**

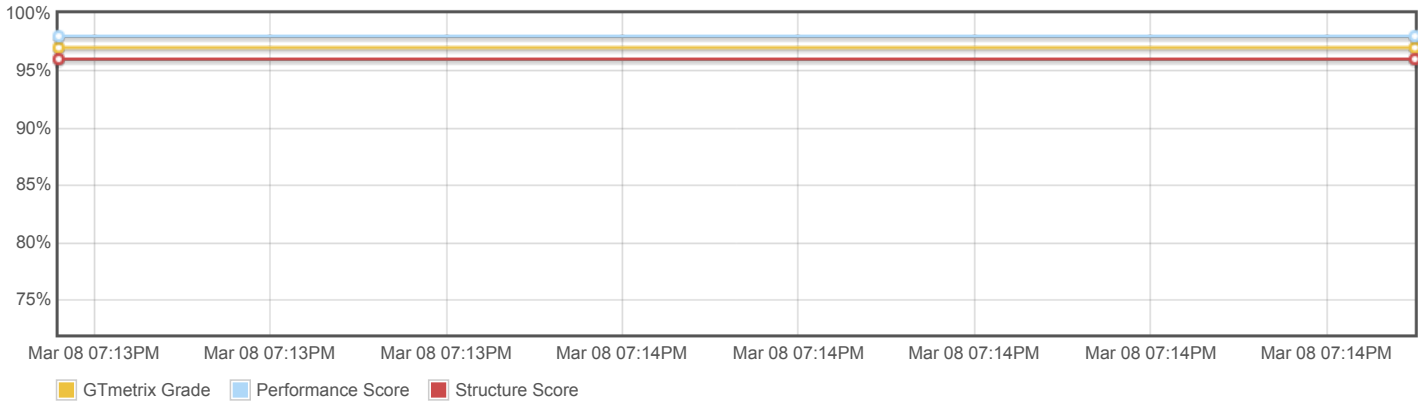
About GTmetrix



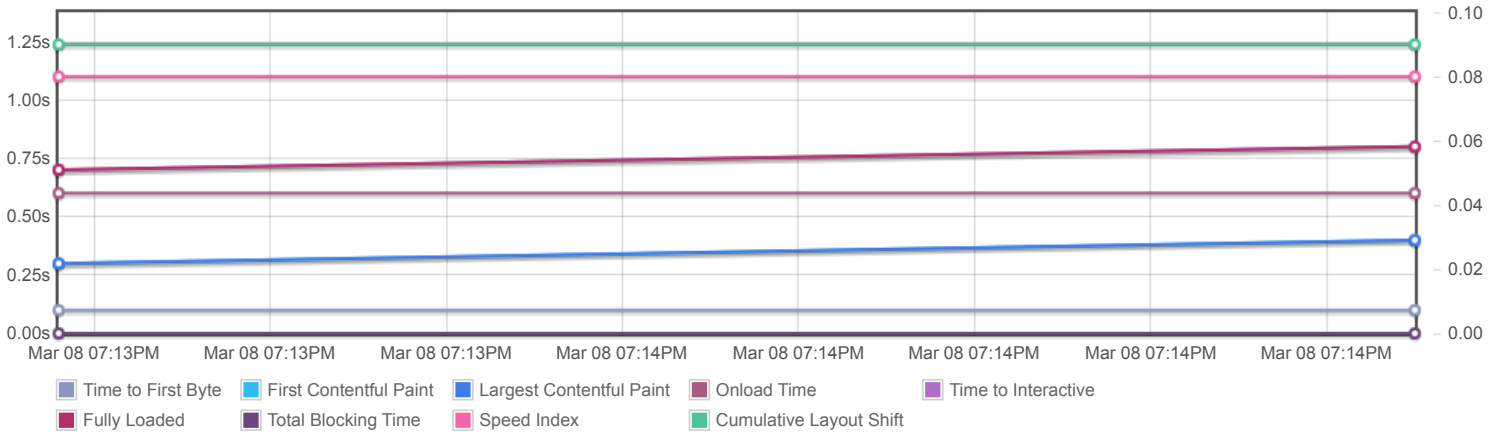
GTmetrix is developed by the good folks at **Carbon60**, a Canadian hosting company with over 28 years experience in web technology.

<https://carbon60.com/>

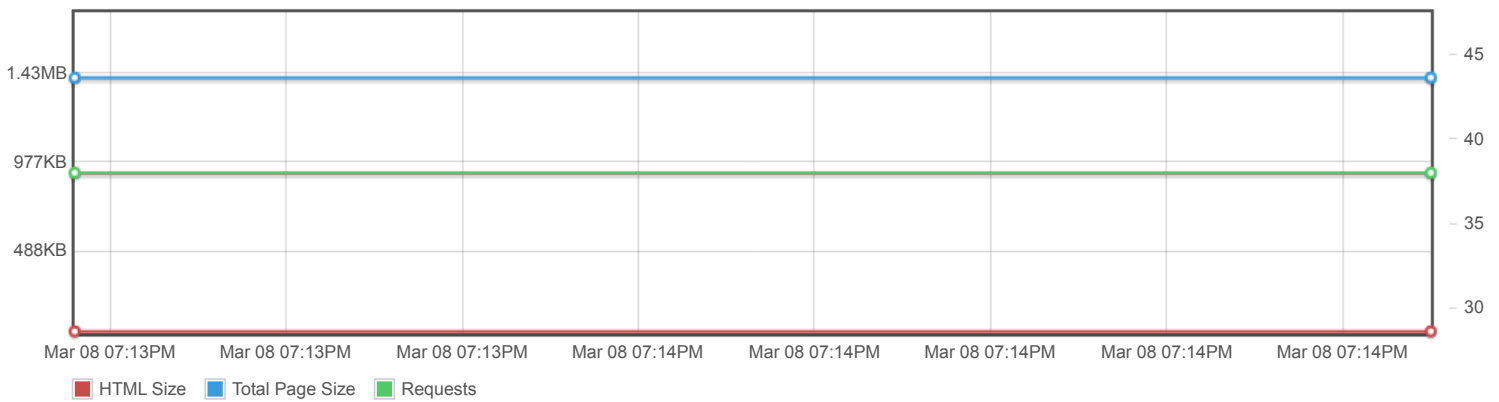
Page scores



Page metrics

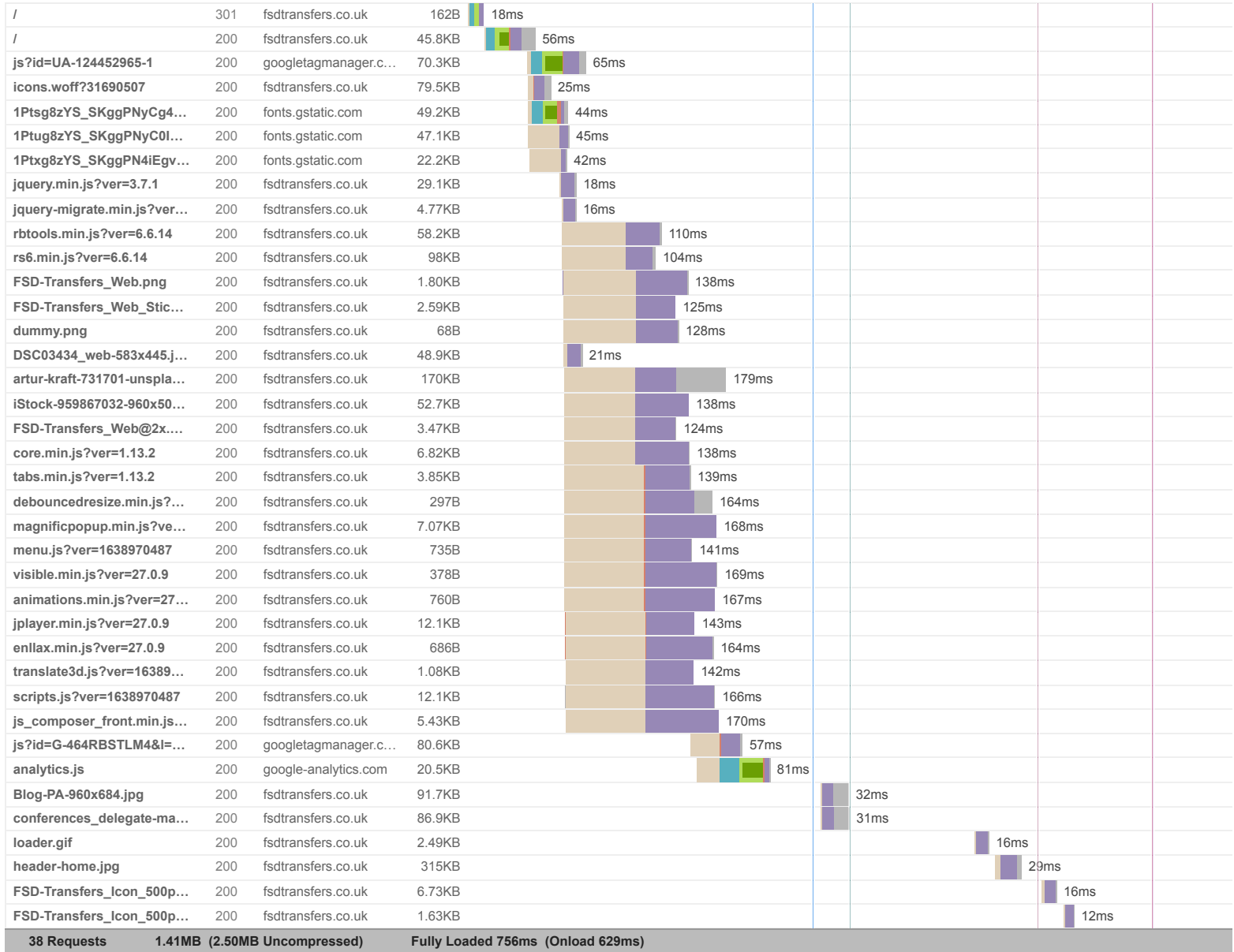


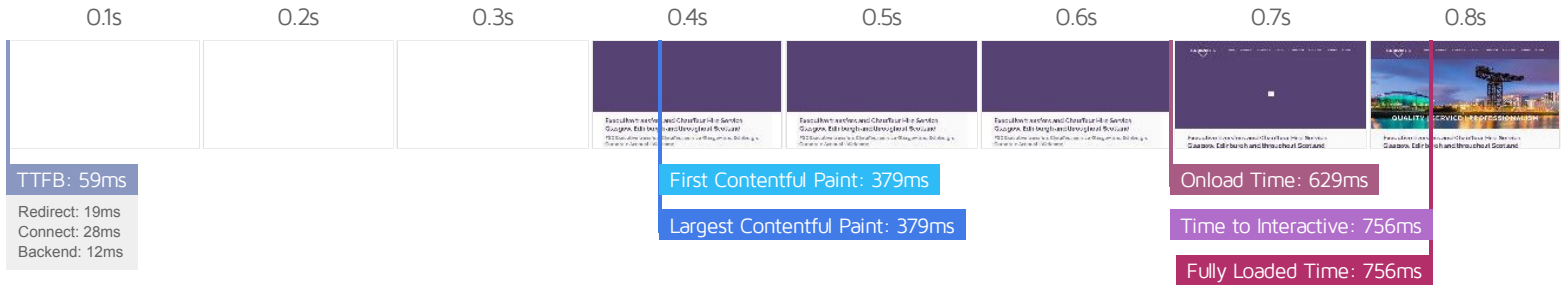
Page sizes and request counts



The waterfall chart displays the loading behaviour of your site in your selected browser. It can be used to discover simple issues such as 404's or more complex issues such as external resources blocking page rendering.

Executive Transfers and Chauffeur service Glasgow, Edinburgh





Performance Metrics

<p>First Contentful Paint</p> <p>How quickly content like text or images are painted onto your page. A good user experience is 0.9s or less.</p>	<p>Good - Nothing to do here</p> <p>379ms</p>	<p>Time to Interactive</p> <p>How long it takes for your page to become fully interactive. A good user experience is 2.5s or less.</p>	<p>Good - Nothing to do here</p> <p>756ms</p>
<p>Speed Index</p> <p>How quickly the contents of your page are visibly populated. A good user experience is 1.3s or less.</p>	<p>Good - Nothing to do here</p> <p>1.1s</p>	<p>Total Blocking Time</p> <p>How much time is blocked by scripts during your page loading process. A good user experience is 150ms or less.</p>	<p>Good - Nothing to do here</p> <p>25ms</p>
<p>Largest Contentful Paint</p> <p>How long it takes for the largest element of content (e.g. a hero image) to be painted on your page. A good user experience is 1.2s or less.</p>	<p>Good - Nothing to do here</p> <p>379ms</p>	<p>Cumulative Layout Shift</p> <p>How much your page's layout shifts as it loads. A good user experience is a score of 0.1 or less.</p>	<p>Good - Nothing to do here</p> <p>0.09</p>

Browser Timings

Redirect	19ms	Connect	28ms	Backend	12ms
TTFB	59ms	DOM Int.	292ms	First Paint	379ms
DOM Loaded	421ms	Onload	629ms	Fully Loaded	756ms

IMPACT AUDIT

Low **Avoid an excessive DOM size** TBT 493 elements

A large DOM will increase memory usage, cause longer style calculations, and produce costly layout reflows.

STATISTIC	ELEMENT	VALUE
Total DOM Elements		493
Maximum DOM Depth	Why FSD? 	27
Maximum Child Elements	body.home <body class="home page-template-default page page-id-78 template-slider color-custom c...">	20

Low **Avoid enormous network payloads** LCP Total size was 1.41MB

Large network payloads cost users real money and are highly correlated with long load times.

URL	TRANSFER SIZE
https://www.fsdtransfers.co.uk/wp-content/uploads/2018/08/header-home.jpg	316KB
https://www.fsdtransfers.co.uk/wp-content/uploads/2018/08/artur-kraft-731701-unsplash-960x720.jpg	170KB
https://www.fsdtransfers.co.uk/wp-content/plugins/revslider/public/assets/js/rs6.min.js?ver=6.6.14	98KB
https://www.fsdtransfers.co.uk/wp-content/uploads/2018/08/Blog-PA-960x684.jpg	92.0KB
https://www.fsdtransfers.co.uk/wp-content/uploads/2018/08/conferences_delegate-management-960x683.jpg	87.2KB
https://www.googletagmanager.com/gtag/js?id=G-464RBSTLM4&i=dataLayer&cx=c	80.7KB
https://www.fsdtransfers.co.uk/wp-content/themes/betheme/fonts/mfn/icons.woff?31690507	79.8KB
https://www.googletagmanager.com/gtag/js?id=UA-124452965-1	70.7KB
https://www.fsdtransfers.co.uk/wp-content/plugins/revslider/public/assets/js/rbtools.min.js?ver=6.6.14	58.2KB
https://www.fsdtransfers.co.uk/wp-content/uploads/2018/08/iStock-959867032-960x505.jpg	52.9KB

Low **Properly size images** Potential savings of 372KB

Serve images that are appropriately-sized to save cellular data and improve load time.

URL	RESOURCE SIZE	POTENTIAL SAVINGS
https://www.fsdtransfers.co.uk/wp-content/uploads/2018/08/artur-kraft-731701-unsplash-960x720.jpg	170KB	157KB
https://www.fsdtransfers.co.uk/wp-content/uploads/2018/08/Blog-PA-960x684.jpg	91.7KB	85.2KB
https://www.fsdtransfers.co.uk/wp-content/uploads/2018/08/conferences_delegate-management-960x683.jpg	86.9KB	80.7KB
https://www.fsdtransfers.co.uk/wp-content/uploads/2018/08/iStock-959867032-960x505.jpg	52.7KB	48.9KB

Low **Avoid multiple page redirects** FCP LCP Potential savings of 17ms

Redirects introduce additional delays before the page can be loaded.

URL	TIME SPENT
• http://www.fsdtransfers.co.uk/	17ms
• https://www.fsdtransfers.co.uk/	0ms

Low **Efficiently encode images** Potential savings of 59.9KB

Optimized images load faster and consume less cellular data.

URL	RESOURCE SIZE	POTENTIAL SAVINGS
https://www.fsdtransfers.co.uk/wp-content/uploads/2018/08/header-home.jpg	315KB	33.2KB
https://www.fsdtransfers.co.uk/wp-content/uploads/2018/08/iStock-959867032-960x505.jpg	52.7KB	21.1KB
https://www.fsdtransfers.co.uk/wp-content/uploads/2018/08/Blog-PA-960x684.jpg	91.7KB	5.67KB

Low **Avoid long main-thread tasks** TBT 1 long task found

Lists the longest tasks on the main thread, useful for identifying worst contributors to input delay.

URL	START TIME	DURATION
• https://www.fsdtransfers.co.uk/wp-content/plugins/revslider/public/assets/js/rbtools.min.js?ver=6.6.14	680ms	75ms

Low **Reduce JavaScript execution time** TBT 394ms spent executing JavaScript

Consider reducing the time spent parsing, compiling, and executing JS. You may find delivering smaller JS payloads helps with this.

URL	TOTAL CPU TIME	SCRIPT EVALUATION	SCRIPT PARSE
• https://www.fsdtransfers.co.uk/wp-content/plugins/revslider/public/assets/js/rbtools.min.js?ver=6.6.14	519ms	142ms	4ms
• https://www.fsdtransfers.co.uk/	327ms	5ms	2ms
• https://www.fsdtransfers.co.uk/wp-content/plugins/revslider/public/assets/js/rs6.min.js?ver=6.6.14	149ms	111ms	6ms
• Unattributable	148ms	14ms	0ms
• https://www.fsdtransfers.co.uk/wp-includes/js/jquery/jquery.min.js?ver=3.7.1	65ms	52ms	2ms
• https://www.googletagmanager.com/gtag/js?id=UA-124452965-1	53ms	49ms	3ms

Low **Reduce unused CSS** FCP LCP Potential savings of 32.8KB

Reduce unused rules from stylesheets and defer CSS not used for above-the-fold content to decrease bytes consumed by network activity.

URL	TRANSFER SIZE	POTENTIAL SAVINGS
• <code>img.emoji{display:inline!important;border:none!important;box-shadow:none!important;...}...</code>	37.4KB	32.8KB

Low **Serve images in next-gen formats** Potential savings of 392KB

Image formats like WebP and AVIF often provide better compression than PNG or JPEG, which means faster downloads and less data consumption.

URL	RESOURCE SIZE	POTENTIAL SAVINGS
https://www.fsdtransfers.co.uk/wp-content/uploads/2018/08/header-home.jpg	315KB	177KB
https://www.fsdtransfers.co.uk/wp-content/uploads/2018/08/artur-kraft-731701-unsplash-960x720.jpg	170KB	61.0KB
https://www.fsdtransfers.co.uk/wp-content/uploads/2018/08/Blog-PA-960x684.jpg	91.7KB	53.6KB
https://www.fsdtransfers.co.uk/wp-content/uploads/2018/08/conferences_delegate-management-960x683.jpg	86.9KB	43.2KB
https://www.fsdtransfers.co.uk/wp-content/uploads/2018/08/iStock-959867032-960x505.jpg	52.7KB	39.0KB
https://www.fsdtransfers.co.uk/wp-content/uploads/2018/08/DSC03434_web-583x445.jpg	48.9KB	17.8KB

Low **Defer offscreen images** Potential savings of 5.08KB

Consider lazy-loading offscreen and hidden images after all critical resources have finished loading to lower time to interactive.

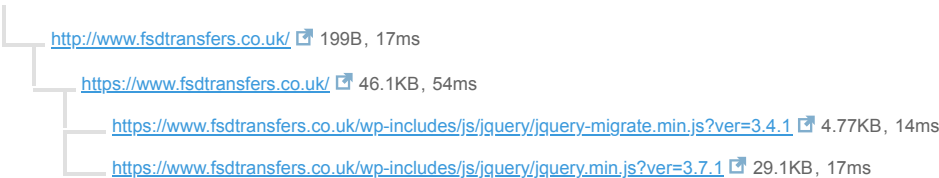
URL	RESOURCE SIZE	POTENTIAL SAVINGS
https://www.fsdtransfers.co.uk/wp-content/uploads/2018/07/FSD-Transfers_Web_Sticky.png	2.59KB	2.59KB
https://www.fsdtransfers.co.uk/wp-content/plugins/revslider/public/assets/assets/loader.gif	2.49KB	2.49KB

Low **Avoid chaining critical requests** FCP LCP 2 chains found

The Critical Request Chains below show you what resources are loaded with a high priority. Consider reducing the length of chains, reducing the download size of resources, or deferring the download of unnecessary resources to improve page load.

Maximum critical path latency: **117ms**

INITIAL NAVIGATION



Low **Reduce unused JavaScript** LCP Potential savings of 146KB

Reduce unused JavaScript and defer loading scripts until they are required to decrease bytes consumed by network activity.

URL	TRANSFER SIZE	POTENTIAL SAVINGS
https://www.fsdtransfers.co.uk/wp-content/plugins/revslider/public/assets/js/rs6.min.js?ver=6.6.14	98KB	44.0KB
https://www.googletagmanager.com/gtag/js?id=G-464RBSTLM4&l=dataLayer&cx=c	80.7KB	39.0KB
https://www.googletagmanager.com/gtag/js?id=UA-124452965-1	70.7KB	31.8KB
https://www.fsdtransfers.co.uk/wp-content/plugins/revslider/public/assets/js/rbtools.min.js?ver=6.6.14	58.2KB	31.7KB

N/A **Largest Contentful Paint element** LCP 380 ms

This is the largest contentful element painted within the viewport.

ELEMENT

Executive transfers and Chauffeur Hire Service Glasgow, Edinburgh and throughou...
<h1>

PHASE	% OF LCP	TIMING
TTFB	16%	59ms
Load Delay	0%	0ms
Load Time	0%	0ms
Render Delay	84%	320ms

N/A **Reduce initial server response time** FCP LCP Root document took 11ms

Keep the server response time for the main document short because all other requests depend on it.

URL	TIME SPENT
<ul style="list-style-type: none"> https://www.fsdtransfers.co.uk/ 	11ms

N/A **Minimize main-thread work** TBT Main-thread busy for 1.3s

Consider reducing the time spent parsing, compiling and executing JS. You may find delivering smaller JS payloads helps with this.

CATEGORY	TIME SPENT
Other	499ms
Script Evaluation	440ms
Rendering	210ms
Style & Layout	127ms
Parse HTML & CSS	36ms
Script Parsing & Compilation	33ms

N/A **Reduce the impact of third-party code** TBT Total size was 291KB

Third-party code can significantly impact load performance. Limit the number of redundant third-party providers and try to load third-party code after your page has primarily finished loading.

THIRD-PARTY	TRANSFER SIZE	MAIN-THREAD BLOCKING TIME
GOOGLE TAG MANAGER	151KB	0ms
• https://www.googletagmanager.com/gtag/js?id=G-464RBSTLM4&i=dataLayer&cx=c	80.7KB	0ms
• https://www.googletagmanager.com/gtag/js?id=UA-124452965-1	70.7KB	0ms
GOOGLE FONTS	119KB	0ms
• https://fonts.gstatic.com/s/raleway/v29/1Ptsg8zYS_SKggPNyCg4TYFq.woff2	49.8KB	0ms
• https://fonts.gstatic.com/s/raleway/v29/1Ptug8zYS_SKggPNyC0ITw.woff2	47.2KB	0ms
• https://fonts.gstatic.com/s/raleway/v29/1Ptxg8zYS_SKggPN4iEgynHyvveLxVs9pbCIPrE.woff2	22.3KB	0ms
GOOGLE ANALYTICS	20.8KB	0ms
• https://www.google-analytics.com/analytics.js	20.8KB	0ms

N/A

Avoid serving legacy JavaScript to modern browsers TBT

Nothing to do here, good job!

N/A

User Timing marks and measures

No user timings and/or marks found.