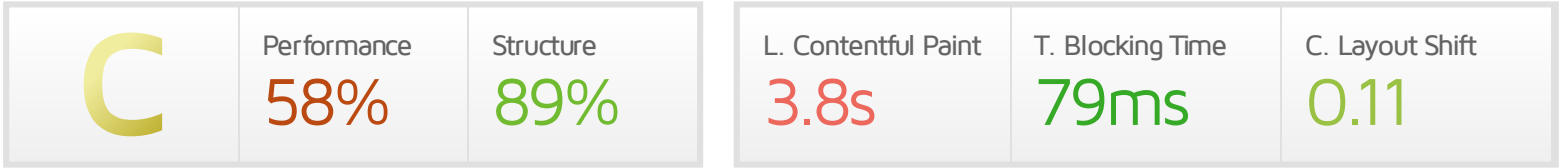




Performance Report for: <http://www.etmcars.co.uk/>

Report generated: Sat, Mar 9, 2024 5:40 AM -0800
 Test Server Location: London, UK
 Using: Chrome 117.0.0.0, Lighthouse 11.0.0



Top Issues

High	Reduce initial server response time <small>FCP LCP</small>	Root document took 1.9s
Med	Use explicit width and height on image elements <small>CLS</small>	1 image found
Med-Low	Serve static assets with an efficient cache policy	Potential savings of 339KB
Med-Low	Avoid chaining critical requests <small>FCP LCP</small>	14 chains found
Med-Low	Avoid enormous network payloads <small>LCP</small>	Total size was 2.91MB

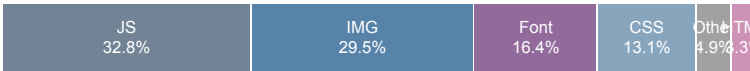
Page Details



Total Page Size - 2.90MB



Total Page Requests - 61



How does this affect me?

Today's web user expects a fast and seamless website experience. Delivering that fast experience can result in increased visits, conversions and overall happiness.

As if you didn't need more incentive, **Google has announced that they are using page speed in their ranking algorithm.**

About GTmetrix

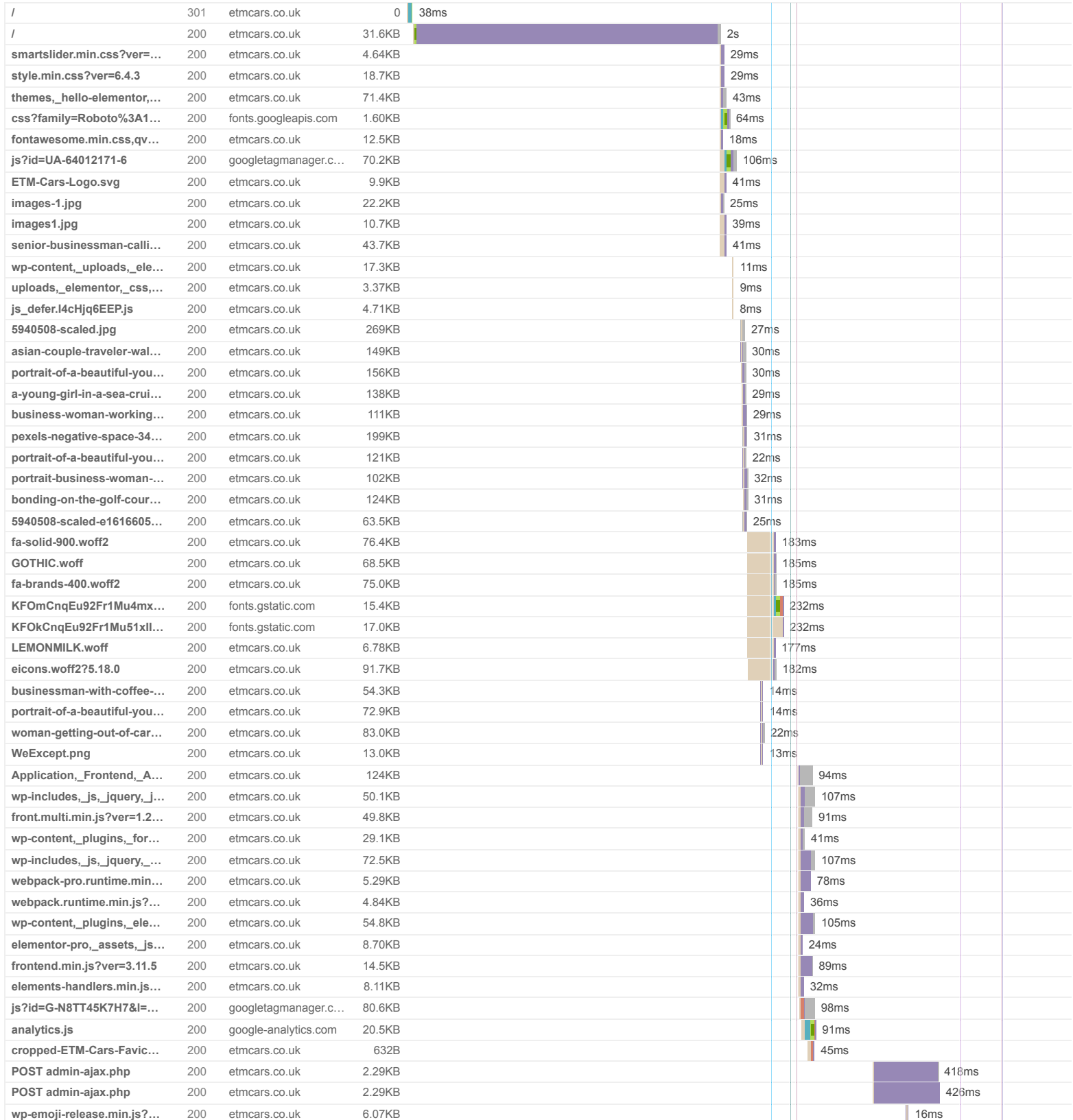


GTmetrix is developed by the good folks at **Carbon60**, a Canadian hosting company with over 28 years experience in web technology.

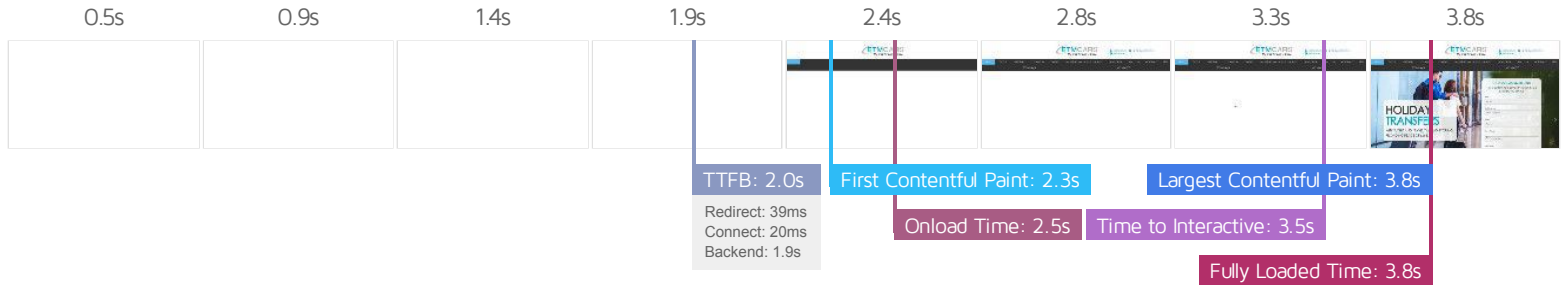
<https://carbon60.com/>

The waterfall chart displays the loading behaviour of your site in your selected browser. It can be used to discover simple issues such as 404's or more complex issues such as external resources blocking page rendering.

Home - ETMcars



text-editor.2c35aafbe5bf0...	200	etmcars.co.uk	1.33KB				12ms	
intlTelInput.min.css?ver=...	200	etmcars.co.uk	3.58KB				8ms	
inputmask.min.js?ver=1.2...	200	etmcars.co.uk	33.6KB				17ms	
jquery.inputmask.min.js?...	200	etmcars.co.uk	32.6KB				14ms	
inputmask.binding.js?ver...	200	etmcars.co.uk	853B				11ms	
forminator-icons-font.wof...	200	etmcars.co.uk	3.67KB				125ms	
KFOICnqEu92Fr1MmWUif...	200	fonts.gstatic.com	15.5KB				106ms	
KFOICnqEu92Fr1MmEU9f...	200	fonts.gstatic.com	15.5KB				100ms	
61 Requests	2.90MB	(5.51MB Uncompressed)	Fully Loaded 3.8s	(Onload 2.5s)				



Performance Metrics

<p>First Contentful Paint</p> <p>How quickly content like text or images are painted onto your page. A good user experience is 0.9s or less.</p>	<p>Much longer than recommended</p> <p>2.3s</p>	<p>Time to Interactive</p> <p>How long it takes for your page to become fully interactive. A good user experience is 2.5s or less.</p>	<p>Longer than recommended</p> <p>3.5s</p>
<p>Speed Index</p> <p>How quickly the contents of your page are visibly populated. A good user experience is 1.3s or less.</p>	<p>Much longer than recommended</p> <p>5.6s</p>	<p>Total Blocking Time</p> <p>How much time is blocked by scripts during your page loading process. A good user experience is 150ms or less.</p>	<p>Good - Nothing to do here</p> <p>79ms</p>
<p>Largest Contentful Paint</p> <p>How long it takes for the largest element of content (e.g. a hero image) to be painted on your page. A good user experience is 1.2s or less.</p>	<p>Much longer than recommended</p> <p>3.8s</p>	<p>Cumulative Layout Shift</p> <p>How much your page's layout shifts as it loads. A good user experience is a score of 0.1 or less.</p>	<p>OK, but consider improvement</p> <p>0.11</p>

Browser Timings

Redirect	39ms	Connect	20ms	Backend	1.9s
TTFB	2.0s	First Paint	2.3s	DOM Int.	2.4s
DOM Loaded	2.4s	Onload	2.5s	Fully Loaded	3.8s

IMPACT AUDIT

Low

Avoid an excessive DOM size TBT

975 elements

A large DOM will increase memory usage, cause longer style calculations, and produce costly layout reflows.

STATISTIC	ELEMENT	VALUE
Total DOM Elements		975
Maximum DOM Depth	div.n2-ss-item-content > div.n2-ow > p.n2-font-485d788884e8fc9407cca398ee7386d0-paragraph > br 	36
Maximum Child Elements	body.home <body class="home page-template-default page page-id-13 wp-custom-logo elementor-default..." style="overflow-x: hidden;" data-elementor-device-mode="desktop">	51

Low

Avoid long main-thread tasks TBT

5 long tasks found

Lists the longest tasks on the main thread, useful for identifying worst contributors to input delay.

URL	START TIME	DURATION
• https://www.etmcars.co.uk/	2.1s	145ms
• https://www.etmcars.co.uk/pagespeed_static/js_defer.l4cHjq6EEP.js	2.8s	92ms
• https://www.etmcars.co.uk/pagespeed_static/js_defer.l4cHjq6EEP.js	3.3s	68ms
• https://www.etmcars.co.uk/pagespeed_static/js_defer.l4cHjq6EEP.js	3.5s	64ms
• data:text/javascript>window.pagespeed.psatemp%3D0%3B	2.7s	54ms

Low

Avoid large layout shifts CLS

5 elements found

These DOM elements contribute most to the CLS of the page.

ELEMENT	CLS CONTRIBUTION
TESTIMONIALS 	0.03
GET A QUOTE 	0.02
FLEET 	0.02
SOUTHAMPTON CRUISE SHIP TRANSFERS 	0.01
Name Email Address Phone Date of Travel Pickup Time Number of Passengers Pickup... <form id="forminator-module-743" class="forminator-ui forminator-custom-form forminator-custom-form-743 forminator..." method="post" data-forminator-render="0" data-form-id="743" data-design="default" data-grid="open" data-uid="65ec66d1dbcb8" novalidate="novalidate">	0.01

Low

Use a Content Delivery Network (CDN)

1 resource found

CDNs can give an equally fast web experience to your users across the globe.

URL

- https://www.etmcars.co.uk/pagespeed_static/js_defer.l4cHjq6EEP.js

Low

Ensure text remains visible during webfont load FCP LCP

7 fonts found

Leverage the `font-display` CSS feature to ensure text is user-visible while webfonts are loading.

URL

- <https://www.etmcars.co.uk/wp-content/uploads/2021/03/GOTHIC.woff>
- <https://fonts.gstatic.com/s/roboto/v30/KFOmCnqEu92Fr1Mu4mxK.woff2>
- <https://fonts.gstatic.com/s/roboto/v30/KFOkCnqEu92Fr1Mu51xIzl.woff2>
- <https://www.etmcars.co.uk/wp-content/uploads/2021/03/LEMONMILK.woff>
- <https://www.etmcars.co.uk/wp-content/plugins/elementor/assets/lib/eicons/fonts/eicons.woff2?5.18.0>
- <https://fonts.gstatic.com/s/roboto/v30/KFOICnqEu92Fr1MmWUlfBBc4.woff2>
- <https://fonts.gstatic.com/s/roboto/v30/KFOICnqEu92Fr1MmEU9fBBc4.woff2>

POTENTIAL SAVINGS

19ms
67ms
68ms
13ms
19ms
15ms
15ms

Low

Reduce JavaScript execution time TBT

724ms spent executing JavaScript

Consider reducing the time spent parsing, compiling, and executing JS. You may find delivering smaller JS payloads helps with this.

URL

- <https://www.etmcars.co.uk/>
- https://www.etmcars.co.uk/pagespeed_static/js_defer.l4cHjq6EEP.js
- Unattributable
- <https://www.etmcars.co.uk/wp-content/plugins/elementor/assets/js/frontend.min.js?ver=3.11.5>

TOTAL CPU TIME

1.0s
710ms
346ms
200ms

SCRIPT EVALUATION

33ms
525ms
2ms
157ms

SCRIPT PARSE

1ms
4ms
0ms
0ms

Low

Enable text compression FCP LCP

Potential savings of 5.57KB

Text-based resources should be served with compression (gzip, deflate or brotli) to minimize total network bytes.

URL	TRANSFER SIZE	POTENTIAL SAVINGS
• https://www.etmcars.co.uk/wp-content/plugins/elementor-pro/assets/js/webpack-pro.runtime.min.js?ver=3.11.6	5.29KB	2.88KB
• https://www.etmcars.co.uk/wp-content/plugins/elementor/assets/js/webpack.runtime.min.js?ver=3.11.5	4.84KB	2.70KB

Low

Properly size images

Potential savings of 253KB

Serve images that are appropriately-sized to save cellular data and improve load time.

URL	RESOURCE SIZE	POTENTIAL SAVINGS
https://www.etmcars.co.uk/wp-content/uploads/2021/03/woman-getting-out-of-car-H2L543T-1024x683.jpg	83.0KB	80.5KB
https://www.etmcars.co.uk/wp-content/uploads/2021/03/portrait-of-a-beautiful-young-bride-in-the-car-7B8D7EH-1024x684.jpg	72.9KB	70.8KB
https://www.etmcars.co.uk/wp-content/uploads/2021/03/businessman-with-coffee-sitting-on-back-seat-in-ca-A4HB3BK-1024x683.jpg	54.3KB	52.7KB
https://www.etmcars.co.uk/wp-content/uploads/2021/03/senior-businessman-calling-on-smartphone-in-car-P55YEET-1024x683.jpg	43.7KB	42.4KB
https://www.etmcars.co.uk/wp-content/uploads/2021/03/images1.jpg	10.7KB	6.32KB

Low

Avoid multiple page redirects FCP LCP

Potential savings of 32ms

Redirects introduce additional delays before the page can be loaded.

URL	TIME SPENT
• http://www.etmcars.co.uk/	32ms
• https://www.etmcars.co.uk/	0ms

Low

Reduce unused CSS FCP LCP

Potential savings of 112KB

Reduce unused rules from stylesheets and defer CSS not used for above-the-fold content to decrease bytes consumed by network activity.

URL	TRANSFER SIZE	POTENTIAL SAVINGS
• https://www.etmcars.co.uk/wp-content/themes/_hello-elementor/_style.min.css.gver==2.3.1+themes/_hello-elementor/_theme.min.css.gver==2.3.1+plugins/_elementor/_assets/_lib/_eicons/_css/_elementor-icons.min.css.gver==5.18.0+plugins/_elementor/_assets/_css/_frontend.min.css.gver==3.11.5+plugins/_elementor/_assets/_lib/_swiper/_css/_swiper.min.css.gver==5.3.6+uploads/_elementor/_css/_post-32.css.gver==1679497836+plugins/_elementor-pro/_assets/_css/_frontend.min.css.gver==3.11.6+uploads/_elementor/_css/_global.css.gver==1679498460+uploads/_elementor/_css/_post-13.css.gver==1679499143+uploads/_elementor/_css/_post-31.css.gver==1679497836+uploads/_elementor/_css/_post-233.css.gver==1679497836+themes/_Hello.P20-.P20Smart.P20Design.P20UK/_style.css.gver==1.0.0.pagespeed.cc.vEQeuO7UN7.css	71.8KB	64.8KB
• https://www.etmcars.co.uk/wp-includes/css/dist/block-library/style.min.css?ver=6.4.3	18.7KB	18.7KB
• https://www.etmcars.co.uk/wp-content/uploads/_elementor/_css/_post-79.css.gver==1679499219+wp-content/uploads/_forminator/_css/_style-743.css.gver==1680597803+wp-content/plugins/_forminator/_assets/_forminator-ui/_css/_forminator-icons.min.css.gver==1.22.1+wp-content/plugins/_forminator/_assets/_forminator-ui/_css/_forminator-form-default.min.css.gver==1.22.1+wp-content/plugins/_forminator/_assets/_forminator-ui/_css/_forminator-grid-open.min.css.gver==1.22.1+wp-content/plugins/_forminator/_assets/_forminator-ui/_css/_forminator-form-default.base.min.css.gver==1.22.1+wp-content/plugins/_forminator/_assets/_forminator-ui/_css/_forminator-form-default.full.min.css.gver==1.22.1+wp-content/plugins/_forminator/_assets/_css/_intlTelInput.min.css.gver==4.0.3+wp-includes/_css/_buttons.min.css.gver==6.4.3+wp-content/uploads/_elementor/_css/_post-413.css.gver==1679497834.pagespeed.cc.gj19mUx9T0.css	17.7KB	15.7KB
• https://www.etmcars.co.uk/wp-content/plugins/elementor/assets/lib/font-awesome/css/font-awesome.min.css.gver==5.15.3+solid.min.css.gver==5.15.3+brands.min.css.gver==5.15.3.pagespeed.cc.vcjhovU2SK.css	12.8KB	12.7KB

Low

Serve images in next-gen formats

Potential savings of 664KB

Image formats like WebP and AVIF often provide better compression than PNG or JPEG, which means faster downloads and less data consumption.

URL	RESOURCE SIZE	POTENTIAL SAVINGS
https://www.etmcars.co.uk/wp-content/uploads/2021/03/5940508-scaled.jpg	269KB	134KB
https://www.etmcars.co.uk/wp-content/uploads/2021/03/pexels-negative-space-34134-scaled.jpg	199KB	71.4KB
https://www.etmcars.co.uk/wp-content/uploads/2021/03/asian-couple-traveler-walking-with-suitcases-in-mo-BTPU43R-scaled-e1616602299399.jpg	149KB	58.1KB
https://www.etmcars.co.uk/wp-content/uploads/2021/03/portrait-of-a-beautiful-young-bride-in-the-car-7B8D7EH-scaled.jpg	156KB	57.1KB
https://www.etmcars.co.uk/wp-content/uploads/2021/03/portrait-of-a-beautiful-young-bride-in-the-car-E95V9EH-scaled.jpg	121KB	46.9KB
https://www.etmcars.co.uk/wp-content/uploads/2021/03/bonding-on-the-golf-course-PT7CJBW-scaled.jpg	124KB	46.4KB
https://www.etmcars.co.uk/wp-content/uploads/2021/03/a-young-girl-in-a-sea-cruise-FN3RPYT-scaled-e1616604337994.jpg	138KB	44.6KB
https://www.etmcars.co.uk/wp-content/uploads/2021/03/business-woman-working-in-car-Y2EAXNT-scaled.jpg	111KB	43.5KB
https://www.etmcars.co.uk/wp-content/uploads/2021/03/portrait-business-woman-using-her-mobile-phone-way-work-car-business-concept-scaled.jpg	102KB	42.2KB
https://www.etmcars.co.uk/wp-content/uploads/2021/03/woman-getting-out-of-car-H2L543T-1024x683.jpg	83.0KB	30.9KB
https://www.etmcars.co.uk/wp-content/uploads/2021/03/portrait-of-a-beautiful-young-bride-in-the-car-7B8D7EH-1024x684.jpg	72.9KB	27.1KB
https://www.etmcars.co.uk/wp-content/uploads/2021/03/5940508-scaled-e1616605631744.jpg	63.5KB	23.2KB
https://www.etmcars.co.uk/wp-content/uploads/2021/03/businessman-with-coffee-sitting-on-back-seat-in-ca-A4HB3BK-1024x683.jpg	54.3KB	21.4KB
https://www.etmcars.co.uk/wp-content/uploads/2021/03/senior-businessman-calling-on-smartphone-in-car-P55YEET-1024x683.jpg	43.7KB	16.6KB

Low

Defer offscreen images

Potential savings of 562KB

Consider lazy-loading offscreen and hidden images after all critical resources have finished loading to lower time to interactive.

URL	RESOURCE SIZE	POTENTIAL SAVINGS
https://www.etmcars.co.uk/wp-content/uploads/2021/03/5940508-scaled.jpg	269KB	269KB
https://www.etmcars.co.uk/wp-content/uploads/2021/03/portrait-of-a-beautiful-young-bride-in-the-car-7B8D7EH-scaled.jpg	156KB	156KB
https://www.etmcars.co.uk/wp-content/uploads/2021/03/a-young-girl-in-a-sea-cruise-FN3RPYT-scaled-e1616604337994.jpg	138KB	138KB

Low

Avoid non-composited animations CLS

2 animated elements found

Animations which are not composited can be janky and increase CLS.

ELEMENT

NAME

western-asian-businessmen-handshake-airport-meeting

```
<div class="n2-ow n2-bullet n2-style-1b63db3aa0abdb8edd4ab4e9709ae8df-dot" role="button" aria-label="western-asian-businessmen-handshake-airport-meeting" tabindex="0">
```

Unsupported CSS Property: background-color

background-color

western-asian-businessmen-handshake-airport-meeting

```
<div class="n2-ow n2-bullet n2-style-1b63db3aa0abdb8edd4ab4e9709ae8df-dot" role="button" aria-label="western-asian-businessmen-handshake-airport-meeting" tabindex="0">
```

Unsupported CSS Property: background-color

background-color

Low

Reduce unused JavaScript LCP

Potential savings of 158KB

Reduce unused JavaScript and defer loading scripts until they are required to decrease bytes consumed by network activity.

URL	TRANSFER SIZE	POTENTIAL SAVINGS
https://www.googletagmanager.com/gtag/js?id=G-N8TT45K7H7&l=dataLayer&cx=c	80.7KB	39.2KB
https://www.etmcars.co.uk/wp-content/plugins/forminator/build/front/front.multi.min.js?ver=1.22.1	49.8KB	34.3KB
https://www.googletagmanager.com/gtag/js?id=UA-64012171-6	70.6KB	31.8KB
https://www.etmcars.co.uk/wp-content/plugins/forminator/assets/js/library/jquery.inputmask.min.js?ver=1.22.1	32.6KB	26.4KB
https://www.etmcars.co.uk/wp-content/plugins/forminator/assets/js/library/inputmask.min.js?ver=1.22.1	33.6KB	26.4KB

N/A

Largest Contentful Paint element LCP

3,790 ms

This is the largest contentful element painted within the viewport.

ELEMENT

div.n2-ss-slide-backgrounds > div.n2-ss-slide-background > div.n2-ss-slide-background-wrap > div.n2-ss-slide-background-image

```
<div data-hash="6f1693d517e4e9ffffcdc8d0667429757" data-desktop="wp-content/uploads/2021/03/5940508-scaled.jpg" class="n2-ss-slide-background-image" data-blur="0" data-alt="" data-title="" data-no-lazy="" style="background-position: 54% 23%; background-image: url(&quot; //www.etmcars.co.uk/wp-...&quot;); ">
```

PHASE	% OF LCP	TIMING
TTFB	52%	2.0s
Load Delay	4%	150ms
Load Time	1%	25ms
Render Delay	43%	1.6s

N/A

Eliminate render-blocking resources FCP LCP

Potential savings of 0 ms

Resources are blocking the first paint of your page. Consider delivering critical JS/CSS inline and deferring all non-critical JS/styles.

Resources that **may** be contributing to render-blocking include:

URL	TRANSFER SIZE	DOWNLOAD TIME
<ul style="list-style-type: none"> https://www.etmcars.co.uk/wp-includes/css/dist/block-library/style.min.css?ver=6.4.3 	18.7KB	302ms
<ul style="list-style-type: none"> https://www.etmcars.co.uk/wp-content/themes/hello-elementor/style.min.css.gver==2.3.1+plugins_elementor_assets_lib_eicons_css_elementor-icons.min.css.gver==5.18.0+plugin_s_elementor_assets_css_frontend.min.css.gver==3.11.5+plugins_elementor_assets_lib_swiper_css_swiper.min.cs_s.gver==5.3.6+uploads_elementor_css_post-32.css.gver==1679497836+plugins_elementor-pro_assets_css_fronten_d.min.css.gver==3.11.6+uploads_elementor_css_global.css.gver==1679498460+uploads_elementor_css_post-13.cs_s.gver==1679499143+uploads_elementor_css_post-31.css.gver==1679497836+uploads_elementor_css_post-233.c_ss.gver==1679497836+themes_Hello_P20_P20Smart_P20Design_P20UK_style.css.gver==1.0.0.pagespeed.cc.vEQeuO7UN7.css 	71.8KB	754ms
<ul style="list-style-type: none"> https://fonts.googleapis.com/css?family=Roboto%3A100%2C100italic%2C200%2C200italic%2C300%2C300italic%2C400%2C400italic%2C500%2C500italic%2C600%2C600italic%2C700%2C700italic%2C800%2C800italic%2C900%2C900italic&display=auto&ver=6.4.3 	1.60KB	763ms
<ul style="list-style-type: none"> https://www.etmcars.co.uk/wp-content/uploads/elementor/css/post-79.css.gver==1679499219+wp-content_upload_s_forinator_css_style-743.css.gver==1680597803+wp-content_plugins_forinator_assets_forinator-ui_css_for_minator-icons.min.css.gver==1.22.1+wp-content_plugins_forinator_assets_forinator-ui_css_src_forinator-utillie_s.min.css.gver==1.22.1+wp-content_plugins_forinator_assets_forinator-ui_css_src_grid_forinator-grid.open.mi_n.css.gver==1.22.1+wp-content_plugins_forinator_assets_forinator-ui_css_src_form_forinator-form-default.ba_se.min.css.gver==1.22.1+wp-content_plugins_forinator_assets_forinator-ui_css_src_form_forinator-form-defa_ult.full.min.css.gver==1.22.1+wp-content_plugins_forinator_assets_css_intlTelInput.min.css.gver==4.0.3+wp-include_s_css_buttons.min.css.gver==6.4.3+wp-content_uploads_elementor_css_post-413.css.gver==1679497834.pagespe_ed.cc.gj19mUx9T0.css 	17.7KB	151ms

N/A

Avoid serving legacy JavaScript to modern browsers TBT

Potential savings of 26.5KB

Polyfills and transforms enable legacy browsers to use new JavaScript features. However, many aren't necessary for modern browsers. For your bundled JavaScript, adopt a modern script deployment strategy using module/nomodule feature detection to reduce the amount of code shipped to modern browsers, while retaining support for legacy browsers.

URL	POTENTIAL SAVINGS
https://www.etmcars.co.uk/wp-content/plugins/forminator/assets/js/library/inputmask.min.js?ver=1.22.1 Line:7 Column:57191 Line:7 Column:70517	9.36KB @babel/p lugin-tr ansform- classes Object.g etProtot ypeOf
https://www.etmcars.co.uk/wp-content/plugins/forminator/assets/js/library/jquery.inputmask.min.js?ver=1.22.1 Line:7 Column:53350 Line:7 Column:68318	9.30KB @babel/p lugin-tr ansform- classes Object.g etProtot ypeOf
https://www.etmcars.co.uk/wp-includes_js_jquery_ui_core.min.js.gver==1.13.2+wp-includes_js_jquery_ui_datepicker.min.js.gver==1.13.2+wp-content_plugins_forminator_assets_js_library_inputmask.min.js.gver==1.22.1+wp-content_plugins_forminator_assets_js_library_jquery.inputmask.min.js.gver==1.22.1+wp-content_plugins_forminator_assets_js_library_inputmask_binding.js.gver==1.22.1+wp-includes_js_imagesloaded.min.js.gver==5.0.0.pagespeed.jc.m7-9IzTQFp.js Line:2 Column:58862 Line:2 Column:72484	7.60KB @babel/p lugin-tr ansform- classes Object.g etProtot ypeOf
https://www.etmcars.co.uk/wp-content/plugins/forminator/build/front/front.multi.min.js?ver=1.22.1 Line:0 Column:1390	159B @babel/p lugin-tr ansform- classes
https://www.etmcars.co.uk/wp-content_plugins_forminator_assets_js_library_intlTelInput.min.js.gver==1.22.1+wp-includes_js_dist_vendor_moment.min.js.gver==2.29.4.pagespeed.jc.x-N3aVJSJQ0.js Line:0 Column:443	55B @babel/p lugin-tr ansform- classes
https://www.etmcars.co.uk/wp-content_plugins_elementor_assets_js_frontend-modules.min.js.gver==3.11.5+wp-includes_js_dist_vendor_wp-polyfill-inert.min.js.gver==3.1.2+wp-includes_js_dist_vendor_regenerator-runtime.min.js.gver==0.14.0+wp-includes_js_dist_vendor_wp-polyfill.min.js.gver==3.15.0+wp-includes_js_dist_hooks.min.js.gver==c6aec9a8d4e5a5d543a1+wp-includes_js_dist_i18n.min.js.gver==7701b0c3857f914212ef.pagespeed.jc.3xgoGyCNXX.js Line:1 Column:497	51B @babel/p lugin-tr ansform- classes

N/A

Minimize main-thread work TBT

Main-thread busy for 2.5s

Consider reducing the time spent parsing, compiling and executing JS. You may find delivering smaller JS payloads helps with this.

CATEGORY	TIME SPENT
Other	894ms
Script Evaluation	843ms
Style & Layout	528ms
Rendering	117ms
Script Parsing & Compilation	54ms
Parse HTML & CSS	45ms
Garbage Collection	21ms

N/A

Reduce the impact of third-party code TBT

Total size was 238KB

Third-party code can significantly impact load performance. Limit the number of redundant third-party providers and try to load third-party code after your page has primarily finished loading.

THIRD-PARTY	TRANSFER SIZE	MAIN-THREAD BLOCKING TIME
GOOGLE TAG MANAGER	151KB	0ms
• https://www.googletagmanager.com/gtag/js?id=G-N8TT45K7H7&l=dataLayer&cx=c	80.7KB	0ms
• https://www.googletagmanager.com/gtag/js?id=UA-64012171-6	70.6KB	0ms
GOOGLE FONTS	65.8KB	0ms
• https://fonts.gstatic.com/s/roboto/v30/KFOkCngEu92Fr1Mu51xllzl.woff2	17.1KB	0ms
• https://fonts.gstatic.com/s/roboto/v30/KFOmCngEu92Fr1Mu4mxK.woff2	15.9KB	0ms
• https://fonts.gstatic.com/s/roboto/v30/KFOlCngEu92Fr1MmEU9fBbc4.woff2	15.7KB	0ms
• https://fonts.gstatic.com/s/roboto/v30/KFOlCngEu92Fr1MmWUlfBbc4.woff2	15.6KB	0ms
GOOGLE ANALYTICS	20.8KB	0ms
• https://www.google-analytics.com/analytics.js	20.8KB	0ms

N/A

User Timing marks and measures

No user timings and/or marks found.