

Performance Report for: <https://www.destinypharma.com/>

Report generated: Wed, Mar 13, 2024 1:33 AM -0700
 Test Server Location: London, UK
 Using: Chrome 117.0.0.0, Lighthouse 11.0.0

	Performance	Structure	L. Contentful Paint	T. Blocking Time	C. Layout Shift
	73%	84%	2.1s	18ms	0.12

Top Issues

Med	Use explicit width and height on image elements <small>CLS</small>	5 images found
Med	Serve static assets with an efficient cache policy	Potential savings of 776KB
Med-Low	Avoid CSS @import <small>FCP LCP</small>	1 resource found
Low	Avoid enormous network payloads <small>LCP</small>	Total size was 2.83MB
Low	Allow back/forward cache restoration	1 failure reason

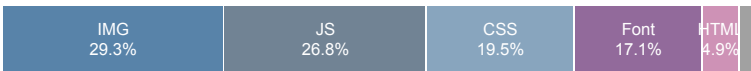
Page Details



Total Page Size - 2.82MB



Total Page Requests - 41



How does this affect me?

Today's web user expects a fast and seamless website experience. Delivering that fast experience can result in increased visits, conversions and overall happiness.

As if you didn't need more incentive, **Google has announced that they are using page speed in their ranking algorithm.**

About GTmetrix

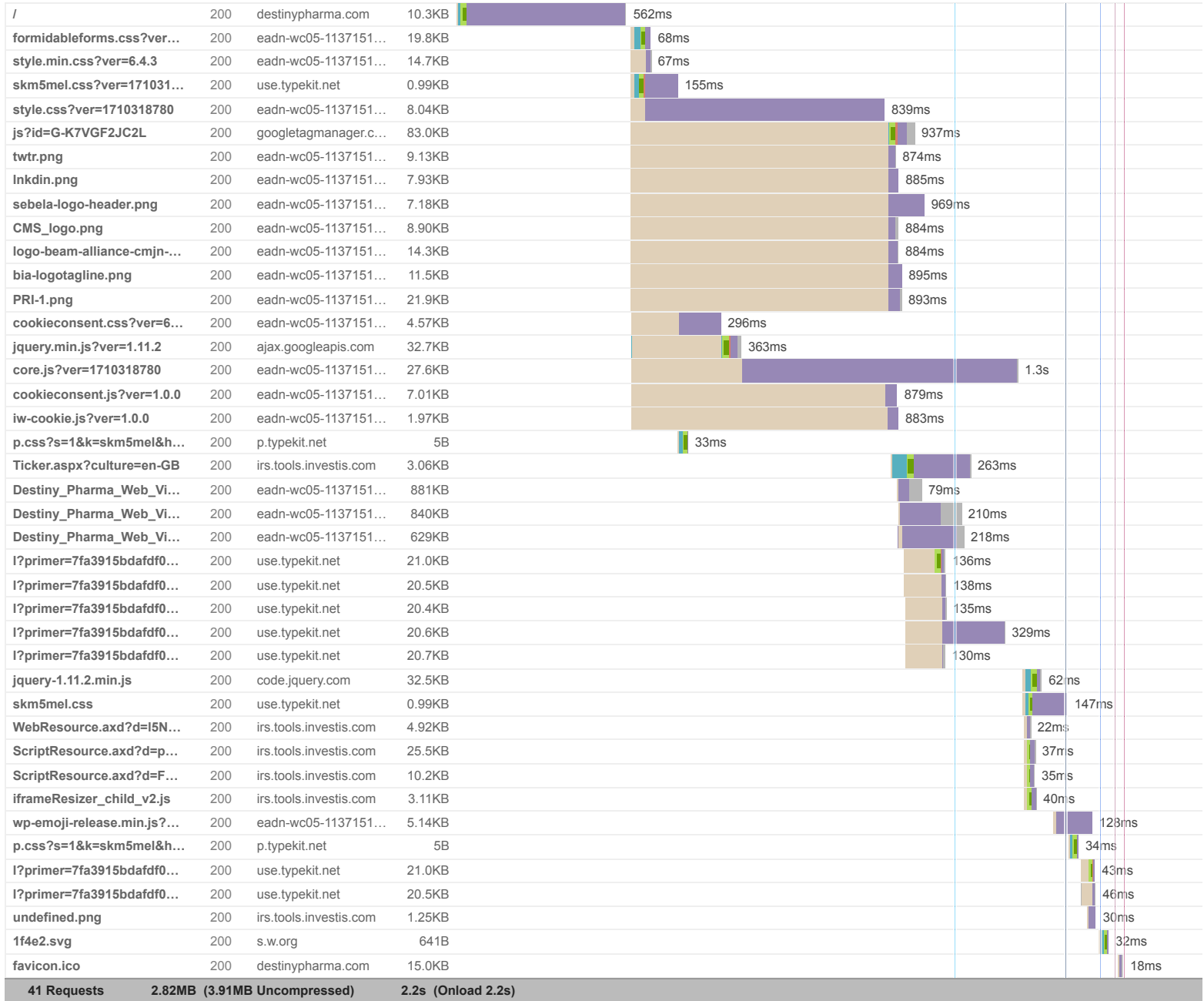
GTmetrix is developed by the good folks at **CARBON60**, a Canadian hosting company with over 28 years experience in web technology.

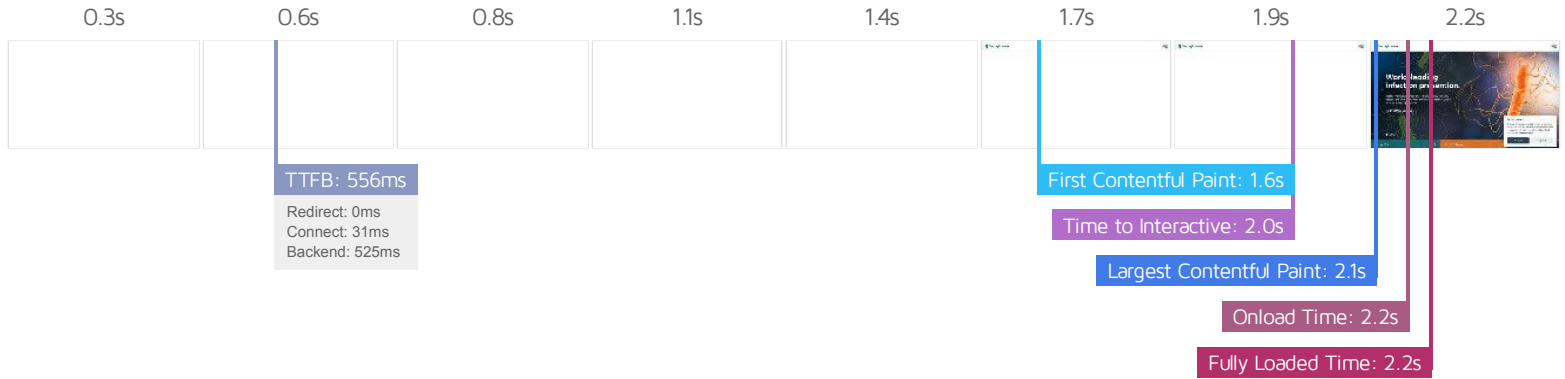


<https://carbon60.com/>

The waterfall chart displays the loading behaviour of your site in your selected browser. It can be used to discover simple issues such as 404's or more complex issues such as external resources blocking page rendering.

Destiny Pharma | World-leading infection prevention.





Performance Metrics

<p>First Contentful Paint</p> <p>How quickly content like text or images are painted onto your page. A good user experience is 0.9s or less.</p>	<p>Much longer than recommended</p> <p>1.6s</p>	<p>Time to Interactive</p> <p>How long it takes for your page to become fully interactive. A good user experience is 2.5s or less.</p>	<p>Good - Nothing to do here</p> <p>2.0s</p>
<p>Speed Index</p> <p>How quickly the contents of your page are visibly populated. A good user experience is 1.3s or less.</p>	<p>Much longer than recommended</p> <p>3.1s</p>	<p>Total Blocking Time</p> <p>How much time is blocked by scripts during your page loading process. A good user experience is 150ms or less.</p>	<p>Good - Nothing to do here</p> <p>18ms</p>
<p>Largest Contentful Paint</p> <p>How long it takes for the largest element of content (e.g. a hero image) to be painted on your page. A good user experience is 1.2s or less.</p>	<p>Longer than recommended</p> <p>2.1s</p>	<p>Cumulative Layout Shift</p> <p>How much your page's layout shifts as it loads. A good user experience is a score of 0.1 or less.</p>	<p>OK, but consider improvement</p> <p>0.12</p>

Browser Timings

Redirect	0ms	Connect	31ms	Backend	525ms
TTFB	556ms	First Paint	1.6s	DOM Int.	2.0s
DOM Loaded	2.0s	Onload	2.2s	Fully Loaded	2.2s

IMPACT AUDIT

Low

Avoid large layout shifts CLS

2 elements found

These DOM elements contribute most to the CLS of the page.

ELEMENT

CLS CONTRIBUTION

Events 18 March 2024 BIO-Europe Spring 08 January 2024 Biotech Showcase La...
`<section class="section latest-section" style="margin-top: -170px;">`

0.12

Carousel Pagination
`<div class="tns-nav" aria-label="Carousel Pagination" style="bottom: 170px;">`

0.00

Low

Use a Content Delivery Network (CDN)

1 resource found

CDNs can give an equally fast web experience to your users across the globe.

URL

- <https://s.w.org/images/core/emoji/14.0.0/svg/1f4e2.svg>

Low

Eliminate render-blocking resources FCP LCP

Potential savings of 64ms

Resources are blocking the first paint of your page. Consider delivering critical JS/CSS inline and deferring all non-critical JS/styles.

Resources that **may** be contributing to render-blocking include:

URL

TRANSFER SIZE

DOWNLOAD TIME

- <https://eadn-wc05-11371519.nxedge.io/wp-content/plugins/formidable/css/formidableforms.css?ver=12181536>
- <https://eadn-wc05-11371519.nxedge.io/wp-includes/css/dist/block-library/style.min.css?ver=6.4.3>
- <https://use.typekit.net/skm5mel.css?ver=1710318780>
- <https://eadn-wc05-11371519.nxedge.io/wp-content/themes/destiny/style.css?ver=1710318780>

19.8KB

938ms

14.7KB

300ms

1.21KB

768ms

8.04KB

150ms

Low

Ensure text remains visible during webfont load FCP LCP

7 fonts found

Leverage the `font-display` CSS feature to ensure text is user-visible while webfonts are loading.

URL	POTENTIAL SAVINGS
https://use.typekit.net/af/766783/00000000000000007735fec5/30/?primer=7fa3915bdafdf03041871920a205bef951d72bf64dd4c4460fb992e3ecc3a862&fvd=n7&v=3	35ms
https://use.typekit.net/af/ff5709/00000000000000007735fec9/30/?primer=7fa3915bdafdf03041871920a205bef951d72bf64dd4c4460fb992e3ecc3a862&fvd=n4&v=3	37ms
https://use.typekit.net/af/23c255/00000000000000007735fecb/30/?primer=7fa3915bdafdf03041871920a205bef951d72bf64dd4c4460fb992e3ecc3a862&fvd=n3&v=3	36ms
https://use.typekit.net/af/48538b/00000000000000007735fec8/30/?primer=7fa3915bdafdf03041871920a205bef951d72bf64dd4c4460fb992e3ecc3a862&fvd=i3&v=3	229ms
https://use.typekit.net/af/e82826/00000000000000007735fecb/30/?primer=7fa3915bdafdf03041871920a205bef951d72bf64dd4c4460fb992e3ecc3a862&fvd=n5&v=3	30ms
https://use.typekit.net/af/766783/00000000000000007735fec5/30/?primer=7fa3915bdafdf03041871920a205bef951d72bf64dd4c4460fb992e3ecc3a862&fvd=n7&v=3	22ms
https://use.typekit.net/af/ff5709/00000000000000007735fec9/30/?primer=7fa3915bdafdf03041871920a205bef951d72bf64dd4c4460fb992e3ecc3a862&fvd=n4&v=3	26ms

Low

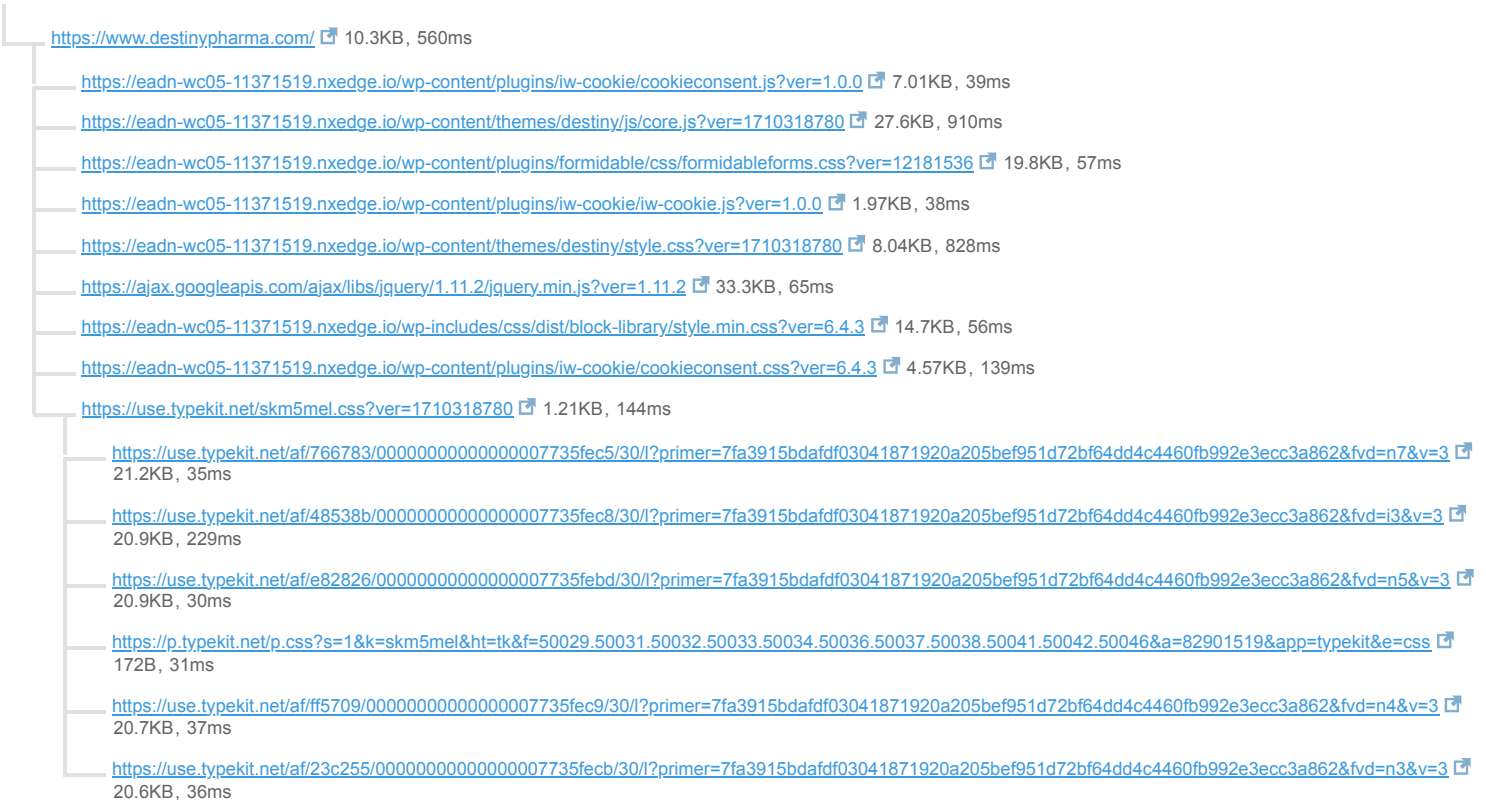
Avoid chaining critical requests FCP LCP

14 chains found

The Critical Request Chains below show you what resources are loaded with a high priority. Consider reducing the length of chains, reducing the download size of resources, or deferring the download of unnecessary resources to improve page load.

Maximum critical path latency: 1.9s

INITIAL NAVIGATION



Low

Avoid long main-thread tasks TBT

2 long tasks found

Lists the longest tasks on the main thread, useful for identifying worst contributors to input delay.

URL	START TIME	DURATION
• https://www.destinypharma.com/	1.5s	123ms
• https://www.destinypharma.com/	1.9s	68ms

Low

Avoid an excessive DOM size TBT

452 elements

A large DOM will increase memory usage, cause longer style calculations, and produce costly layout reflows.

STATISTIC	ELEMENT	VALUE
Total DOM Elements		452
Maximum DOM Depth	svg#Layer_1 > defs > clippath#clip-path > rect <rect width="15" height="15" fill="none">	16
Maximum Child Elements	div.container > div.destiny-logo > a > svg#Layer_1 <svg id="Layer_1" data-name="Layer 1" xmlns="http://www.w3.org/2000/svg" viewBox="0 0 277.84 45.06">	16

Low

Properly size images

Potential savings of 39.1KB

Serve images that are appropriately-sized to save cellular data and improve load time.

URL	RESOURCE SIZE	POTENTIAL SAVINGS
https://eadn-wc05-11371519.nxedge.io/wp-content/uploads/2022/11/PRI-1.png	21.5KB	21.2KB
https://eadn-wc05-11371519.nxedge.io/wp-content/uploads/2022/11/logo-beam-alliance-cmjn-1363-320x138-1.png	13.9KB	9.25KB
https://eadn-wc05-11371519.nxedge.io/wp-content/uploads/2022/11/bia-logotagline.png	11.1KB	8.63KB

Low

Efficiently encode images

Potential savings of 1.51MB

Optimized images load faster and consume less cellular data.

URL	RESOURCE SIZE	POTENTIAL SAVINGS
https://eadn-wc05-11371519.nxedge.io/wp-content/uploads/2022/10/Destiny_Pharma_Web_Visual_Slider_2.jpg	881KB	583KB
https://eadn-wc05-11371519.nxedge.io/wp-content/uploads/2022/10/Destiny_Pharma_Web_Visual_Slider_3.jpg	840KB	567KB
https://eadn-wc05-11371519.nxedge.io/wp-content/uploads/2022/10/Destiny_Pharma_Web_Visual_Slider_1.jpg	629KB	397KB

Low

Reduce JavaScript execution time TBT

118ms spent executing JavaScript

Consider reducing the time spent parsing, compiling, and executing JS. You may find delivering smaller JS payloads helps with this.

URL	TOTAL CPU TIME	SCRIPT EVALUATION	SCRIPT PARSE
• https://www.destinypharma.com/	480ms	20ms	1ms
• Unattributable	135ms	0ms	0ms
• https://ajax.googleapis.com/ajax/libs/jquery/1.11.2/jquery.min.js?ver=1.11.2	59ms	43ms	1ms
• https://www.googletagmanager.com/gtag/js?id=G-K7VGF2JC2L	52ms	44ms	5ms

Low

Reduce unused CSS FCP LCP

Potential savings of 34.6KB

Reduce unused rules from stylesheets and defer CSS not used for above-the-fold content to decrease bytes consumed by network activity.

URL	TRANSFER SIZE	POTENTIAL SAVINGS
• https://eadn-wc05-11371519.nxedgex.io/wp-content/plugins/formidable/css/formidableforms.css?ver=12181536	19.8KB	19.8KB
• https://eadn-wc05-11371519.nxedgex.io/wp-includes/css/dist/block-library/style.min.css?ver=6.4.3	14.7KB	14.7KB

Low

Serve images in next-gen formats

Potential savings of 1.97MB

Image formats like WebP and AVIF often provide better compression than PNG or JPEG, which means faster downloads and less data consumption.

URL	RESOURCE SIZE	POTENTIAL SAVINGS
https://eadn-wc05-11371519.nxedgex.io/wp-content/uploads/2022/10/Destiny_Pharma_Web_Visual_Slider_2.jpg	881KB	749KB
https://eadn-wc05-11371519.nxedgex.io/wp-content/uploads/2022/10/Destiny_Pharma_Web_Visual_Slider_3.jpg	840KB	721KB
https://eadn-wc05-11371519.nxedgex.io/wp-content/uploads/2022/10/Destiny_Pharma_Web_Visual_Slider_1.jpg	629KB	535KB
https://eadn-wc05-11371519.nxedgex.io/wp-content/uploads/2022/11/logo-beam-alliance-cmjn-1363-320x138-1.png	13.9KB	8.35KB

Low

Reduce initial server response time FCP LCP

Root document took 524ms

Keep the server response time for the main document short because all other requests depend on it.

URL	TIME SPENT
• https://www.destinypharma.com/	524ms

Low

Defer offscreen images

Potential savings of 1.34MB

Consider lazy-loading offscreen and hidden images after all critical resources have finished loading to lower time to interactive.

URL	RESOURCE SIZE	POTENTIAL SAVINGS
https://eadn-wc05-11371519.nxedgex.io/wp-content/uploads/2022/10/Destiny_Pharma_Web_Visual_Slider_3.jpg	840KB	778KB
https://eadn-wc05-11371519.nxedgex.io/wp-content/uploads/2022/10/Destiny_Pharma_Web_Visual_Slider_1.jpg	629KB	583KB
https://eadn-wc05-11371519.nxedgex.io/twtr.png	8.73KB	8.73KB
https://eadn-wc05-11371519.nxedgex.io/lkndin.png	7.56KB	7.56KB

Low

Avoid non-composited animations CLS

2 animated elements found

Animations which are not composited can be janky and increase CLS.

ELEMENT

NAME

We use cookies! Hi, this website uses essential cookies to ensure its proper op...

```
<div id="cm" role="dialog" aria-modal="true" aria-hidden="false" aria-labelledby="c-ttl" aria-describedby="c-txt" style="visibility: hidden;">
```

Unsupported CSS Property: visibility

visibility

World-leading infection prevention. Destiny Pharma is a clinical phase biotech...

```
<div class="slider tns-slider tns-gallery tns-subpixel tns-calc tns-horizontal loaded" id="tns1">
```

Unsupported CSS Property: font-size

font-size

Low **Minify JavaScript** FCP LCP Potential savings of 9.55KB

Minifying JavaScript files can reduce payload sizes and script parse time.

URL	TRANSFER SIZE	POTENTIAL SAVINGS
• https://eadn-wc05-11371519.nxedge.io/wp-content/themes/destiny/js/core.js?ver=1710318780	27.6KB	9.55KB

Low **Reduce unused JavaScript** LCP Potential savings of 39.5KB

Reduce unused JavaScript and defer loading scripts until they are required to decrease bytes consumed by network activity.

URL	TRANSFER SIZE	POTENTIAL SAVINGS
https://www.googletagmanager.com/gtag/js?id=G-K7VGF2JC2L	83.4KB	39.5KB

Low **Use HTTP/2 for all resources** 6 requests not served via HTTP/2

HTTP/2 offers many benefits over HTTP/1.1, including binary headers and multiplexing.

URL	PROTOCOL
• https://irs.tools.investis.com/clients/uk/destiny_pharma_ltd2/Ticker/Ticker.aspx?culture=en-GB	http/1.1
• https://irs.tools.investis.com/Clients/WebResource.axd?d=I5N7JybNhTLypzkQMIX1RrPYa8-lfbiBWYX_dYWV_-vM6XOdd77mh2SHc-7kSraa555GZ-6dGUDWycK0oYqjIubHjc1&t=638346557325447473	http/1.1
• https://irs.tools.investis.com/Clients/ScriptResource.axd?d=phUDbPSTuDjHjZpKVPyUofwev3inlBV9AJTGAbafTaFl-AqjaLWYLe8UT2gWqRF1g5xQV9wptY0aHDMZxEhioiUdRdSeQ4BqoFAOgg3HCKdP5AcHwRvJTrJWvm7kSUqsW7v5yf5yTprzV72r_i01wI0rF01&t=20e3ff6b	http/1.1
• https://irs.tools.investis.com/Clients/ScriptResource.axd?d=FwYZ1XsKukon8O-wmMqjEW1BO-M_bBNvwFeKg9zmPSUio3tiNVA5oz2-K4n8Yv6FsCAhGyNDdOuwu5M71wNzdrf5Uk8k9RFjsv6kd3t3-6R_F-6RCD-Hjl4oB6KAFISW8NIAberr3rkLS_TwVZNhhPoRppWtzRDH6R5LvOmhuAIB_85w0&t=20e3ff6b	http/1.1
• https://irs.tools.investis.com/clients/default/scripts/iframeResizer_child_v2.js	http/1.1
• https://irs.tools.investis.com/Clients/uk/destiny_pharma_ltd2/Images/undefined.png	http/1.1

N/A **Largest Contentful Paint element** LCP 2,120 ms

This is the largest contentful element painted within the viewport.

ELEMENT

Hi, this website uses essential cookies to ensure its proper operation and trac...

```
<div id="c-txt">
```


PHASE	% OF LCP	TIMING
TTFB	26%	556ms
Load Delay	0%	0ms
Load Time	0%	0ms
Render Delay	74%	1.6s

N/A **Avoid serving legacy JavaScript to modern browsers** TBT Potential savings of 6.24KB

Polyfills and transforms enable legacy browsers to use new JavaScript features. However, many aren't necessary for modern browsers. For your bundled JavaScript, adopt a modern script deployment strategy using module/nomodule feature detection to reduce the amount of code shipped to modern browsers, while retaining support for legacy browsers.

URL	POTENTIAL SAVINGS
https://eadn-wc05-11371519.nxedge.io/wp-content/themes/destiny/js/core.js?ver=1710318780 Line:1316 Column:2	6.24KB <code>Object.keys</code>

N/A **Minimize main-thread work** TBT Main-thread busy for 758ms

Consider reducing the time spent parsing, compiling and executing JS. You may find delivering smaller JS payloads helps with this.

CATEGORY	TIME SPENT
Other	284ms
Style & Layout	267ms
Script Evaluation	122ms
Rendering	39ms
Parse HTML & CSS	32ms
Script Parsing & Compilation	11ms

N/A **Reduce the impact of third-party code** TBT Total size was 2.80MB

Third-party code can significantly impact load performance. Limit the number of redundant third-party providers and try to load third-party code after your page has primarily finished loading.

THIRD-PARTY	TRANSFER SIZE	MAIN-THREAD BLOCKING TIME
NXEDGE.IO	2.46MB	0ms
• https://eadn-wc05-11371519.nxedge.io/wp-content/uploads/2022/10/Destiny_Pharma_Web_Visual_Slider_2.jpg	881KB	0ms
• https://eadn-wc05-11371519.nxedge.io/wp-content/uploads/2022/10/Destiny_Pharma_Web_Visual_Slider_3.jpg	840KB	0ms
• https://eadn-wc05-11371519.nxedge.io/wp-content/uploads/2022/10/Destiny_Pharma_Web_Visual_Slider_1.jpg	629KB	0ms
• Other resources	170KB	0ms
ADOBE TYPEKIT	149KB	0ms
• https://use.typekit.net/af/766783/00000000000000007735fec5/30/?primer=7fa3915bdafdf03041871920a205bef951d72bf64dd4c4460fb992e3ecc3a862&fvd=n7&v=3	42.5KB	0ms
• https://use.typekit.net/af/ff5709/00000000000000007735fec9/30/?primer=7fa3915bdafdf03041871920a205bef951d72bf64dd4c4460fb992e3ecc3a862&fvd=n4&v=3	41.5KB	0ms
• https://use.typekit.net/af/e82826/00000000000000007735fecb/30/?primer=7fa3915bdafdf03041871920a205bef951d72bf64dd4c4460fb992e3ecc3a862&fvd=n5&v=3	20.9KB	0ms
• https://use.typekit.net/af/48538b/00000000000000007735fec8/30/?primer=7fa3915bdafdf03041871920a205bef951d72bf64dd4c4460fb992e3ecc3a862&fvd=i3&v=3	20.9KB	0ms
• https://use.typekit.net/af/23c255/00000000000000007735fecb/30/?primer=7fa3915bdafdf03041871920a205bef951d72bf64dd4c4460fb992e3ecc3a862&fvd=n3&v=3	20.6KB	0ms
GOOGLE TAG MANAGER	83.4KB	0ms
• https://www.googletagmanager.com/gtag/js?id=G-K7VGF2JC2L	83.4KB	0ms
INVESTIS	48.0KB	0ms
• https://irs.tools.investis.com/Clients/ScriptResource.axd?d=phUDbPSTuDJhZPpKVPyUofwev3inlBV9AJTGAb8tTaFl-AqjaLWYL8UT2gWgRF1g5xQV9wptY0aHDMZxEhioiUdRdSeQ4BqoFAOqg3HCKdP5AcHwRvJTrJWvm7kSUqsW7v5yf5yTrzV72r_i01wl0rF01&t=20e3ff6b	25.5KB	0ms
• https://irs.tools.investis.com/Clients/ScriptResource.axd?d=FwYZ1XsKukon8O-wmMqiEW1BO-M_bBNvwFeKg9zmPSUio3tINVA5oz2-K4n8Yv6FsCAhGyNDdOuwu5M71wNzdf5Uk8k9RFjsv6kd3t3-6R_F-6RCD-HjI4oB6KAFISW8NIAber3rkLS_TwVZNhhPoRppWtzRDH6R5LvOmhuAIB_85w0&t=20e3ff6b	10.2KB	0ms
• https://irs.tools.investis.com/Clients/WebResource.axd?d=l5N7JybNhTLypzkQMIX1RrPYa8-IfbiBWYX_dYVWV_-vM6XOodd77mh2SHc-7kSraa555GZ-6dGUDwvck0oYqjIubHjc1&t=638346557325447473	4.92KB	0ms
• Other resources	7.42KB	0ms
GOOGLE CDN	33.3KB	0ms
• https://ajax.googleapis.com/ajax/libs/jquery/1.11.2/jquery.min.js?ver=1.11.2	33.3KB	0ms
JQUERY CDN	32.8KB	0ms
• https://code.jquery.com/jquery-1.11.2.min.js	32.8KB	0ms
WORDPRESS	641B	0ms

N/A **User Timing marks and measures**

No user timings and/or marks found.