



Performance Report for: <http://www.careyuk.com/>

Report generated: Fri, Mar 8, 2024 9:56 PM -0800
 Test Server Location: London, UK
 Using: Chrome 117.0.0.0, Lighthouse 11.0.0

A	Performance	Structure	L. Contentful Paint	T. Blocking Time	C. Layout Shift
	93%	88%	1.4s	34ms	0

Top Issues

Med	Use explicit width and height on image elements <small>CLS</small>	9 images found
Med-Low	Avoid enormous network payloads <small>LCP</small>	Total size was 3.07MB
Med-Low	Eliminate render-blocking resources <small>FCP LCP</small>	Potential savings of 178ms
Low	Serve static assets with an efficient cache policy	Potential savings of 72.3KB
Low	Use passive listeners to improve scrolling performance	1 event listener not passive

Page Details



Total Page Size - 3.07MB



Total Page Requests - 42



How does this affect me?

Today's web user expects a fast and seamless website experience. Delivering that fast experience can result in increased visits, conversions and overall happiness.

As if you didn't need more incentive, **Google has announced that they are using page speed in their ranking algorithm.**

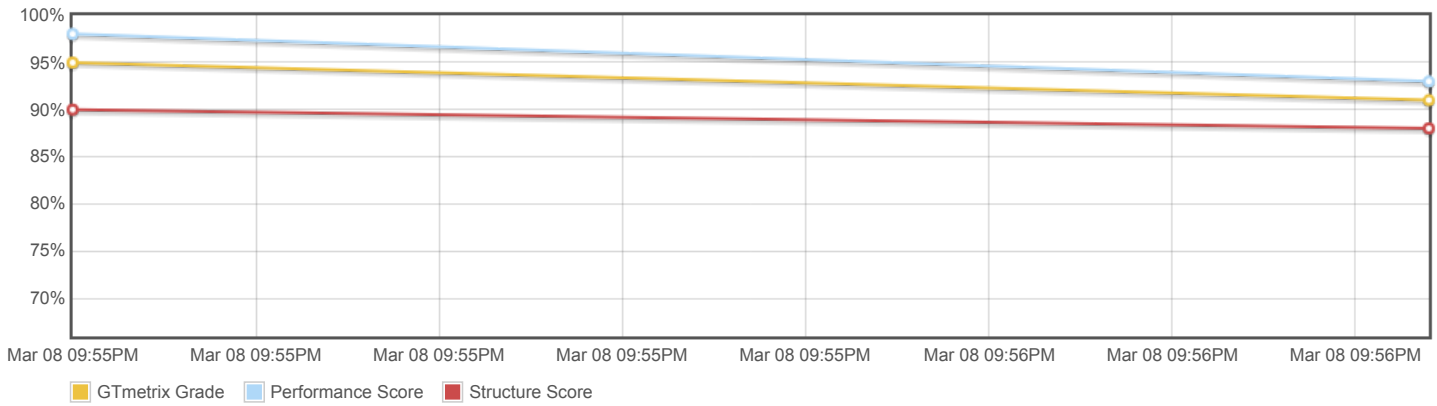
About GTmetrix



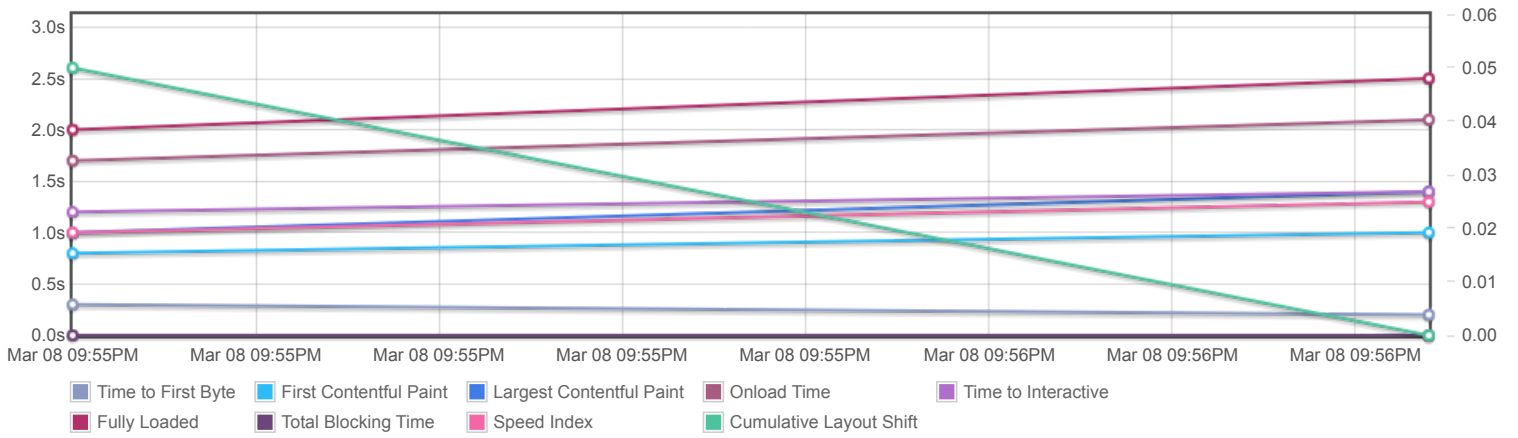
GTmetrix is developed by the good folks at **Carbon60**, a Canadian hosting company with over 28 years experience in web technology.

<https://carbon60.com/>

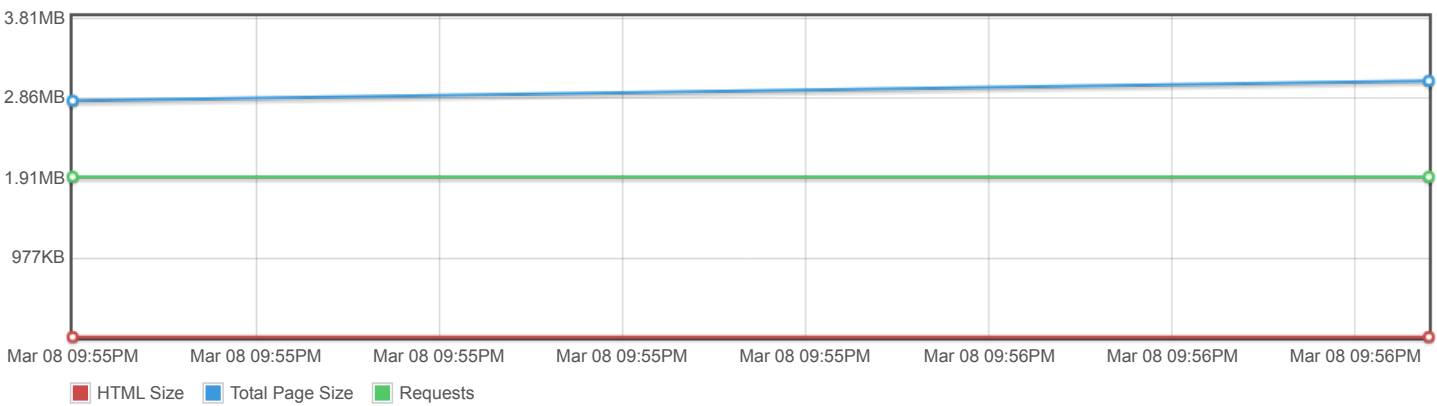
Page scores



Page metrics

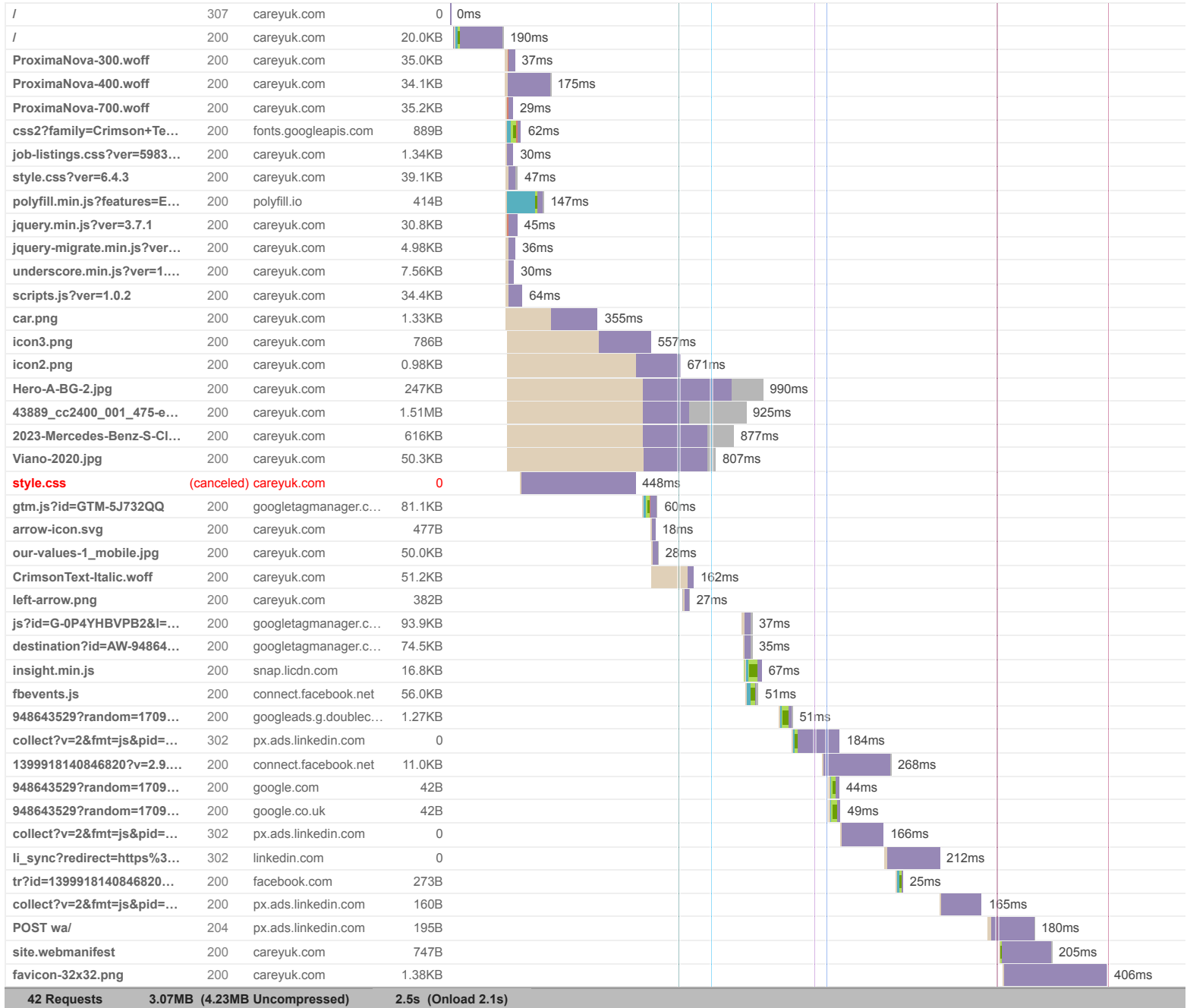


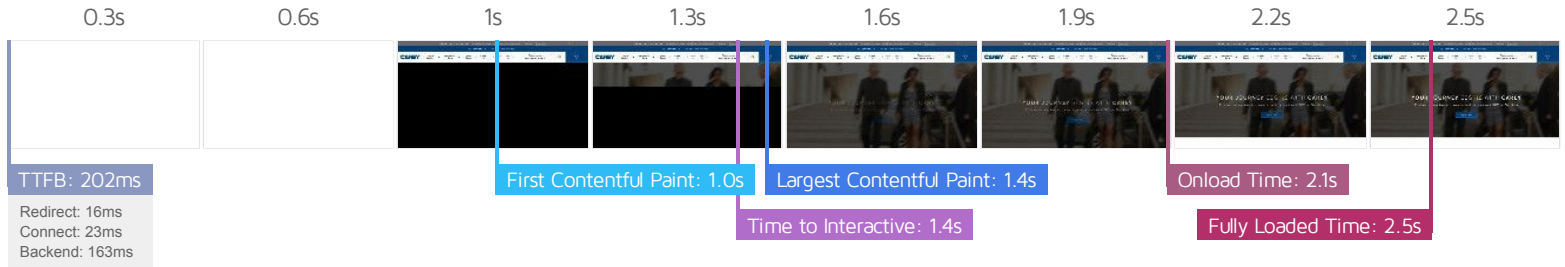
Page sizes and request counts



The waterfall chart displays the loading behaviour of your site in your selected browser. It can be used to discover simple issues such as 404's or more complex issues such as external resources blocking page rendering.

Worldwide Executive Transportation Solutions | Carey International





Performance Metrics

<p>First Contentful Paint</p> <p>How quickly content like text or images are painted onto your page. A good user experience is 0.9s or less.</p>	<p>OK, but consider improvement</p> <p>1.0s</p>	<p>Time to Interactive</p> <p>How long it takes for your page to become fully interactive. A good user experience is 2.5s or less.</p>	<p>Good - Nothing to do here</p> <p>1.4s</p>
<p>Speed Index</p> <p>How quickly the contents of your page are visibly populated. A good user experience is 1.3s or less.</p>	<p>OK, but consider improvement</p> <p>1.3s</p>	<p>Total Blocking Time</p> <p>How much time is blocked by scripts during your page loading process. A good user experience is 150ms or less.</p>	<p>Good - Nothing to do here</p> <p>34ms</p>
<p>Largest Contentful Paint</p> <p>How long it takes for the largest element of content (e.g. a hero image) to be painted on your page. A good user experience is 1.2s or less.</p>	<p>OK, but consider improvement</p> <p>1.4s</p>	<p>Cumulative Layout Shift</p> <p>How much your page's layout shifts as it loads. A good user experience is a score of 0.1 or less.</p>	<p>Good - Nothing to do here</p> <p>0</p>

Browser Timings

Redirect	16ms	Connect	23ms	Backend	163ms
TTFB	202ms	DOM Int.	751ms	DOM Loaded	876ms
First Paint	1.0s	Onload	2.1s	Fully Loaded	2.5s

IMPACT AUDIT

Low

Use a Content Delivery Network (CDN)

2 resources found

CDNs can give an equally fast web experience to your users across the globe.

URL

- https://www.google.co.uk/pagead/1p-user-list/948643529/?random=1709963774247&cv=11&fst=1709960400000&bg=fffff&guid=ON&async=1>m=45be4360z89106738319za201&gcd=131313131&dma=0&u_w=1367&u_h=864&url=https%3A%2F%2Fwww.careyuk.com%2F&frm=0&tiba=Worldwide%20Executive%20Transportation%20Solutions%20%7C%20Carey%20International&npa=0&fmt=3&is_vtc=1&cid=CAQSGwB7FLtqfWdUKglHMBTNK6GumhOHJNWWDUj1kw&random=1258841194&rmt_tid=1&ipr=y
- https://px.ads.linkedin.com/collect?v=2&fmt=js&pid=5040994&time=1709963774297&li_adsId=00af1d4b-d393-4ab2-8996-71fa7048b7bc&url=https%3A%2F%2Fwww.careyuk.com%2F&cookiesTest=true&liSync=true

Low

Avoid an excessive DOM size TBT

723 elements

A large DOM will increase memory usage, cause longer style calculations, and produce costly layout reflows.

STATISTIC	ELEMENT	VALUE
Total DOM Elements		723
Maximum DOM Depth	ul > li > p > br 	22
Maximum Child Elements	EXECUTIVE SEDAN The BMW 530e features a sleek and sophisticated exterior design... <div class="slick-track" style="opacity: 1; width: 15000px; transform: translate3d(-979px, 0px, 0px);">	8

Low

Ensure text remains visible during webfont load FCP LCP

4 fonts found

Leverage the `font-display` CSS feature to ensure text is user-visible while webfonts are loading.

URL	POTENTIAL SAVINGS
• https://www.careyuk.com/wp-content/themes/sc-carey/assets/fonts/proxima-nova/ProximaNova-300.woff	33ms
• https://www.careyuk.com/wp-content/themes/sc-carey/assets/fonts/proxima-nova/ProximaNova-400.woff	171ms
• https://www.careyuk.com/wp-content/themes/sc-carey/assets/fonts/proxima-nova/ProximaNova-700.woff	25ms
• https://www.careyuk.com/wp-content/themes/sc-carey/assets/fonts/crimson-text/CrimsonText-Italic.woff	23ms

Low

Properly size images

Potential savings of 2.21MB

Serve images that are appropriately-sized to save cellular data and improve load time.

URL	RESOURCE SIZE	POTENTIAL SAVINGS
https://www.careyuk.com/wp-content/uploads/sites/36/2021/06/43889_cc2400_001_475-e1695144760567.png	1.51MB	1.44MB
https://www.careyuk.com/wp-content/uploads/sites/36/2021/06/2023-Mercedes-Benz-S-Class-Profile.png	616KB	613KB
https://www.careyuk.com/wp-content/uploads/sites/36/2021/06/Hero-A-BG-2.jpg	247KB	122KB
https://www.careyuk.com/wp-content/uploads/sites/36/2021/06/Viano-2020.jpg	50.1KB	49.4KB

Low

Avoid multiple page redirects FCP LCP

Potential savings of 16ms

Redirects introduce additional delays before the page can be loaded.

URL	TIME SPENT
http://www.careyuk.com/	16ms
https://www.careyuk.com/	0ms

Low

Efficiently encode images

Potential savings of 145KB

Optimized images load faster and consume less cellular data.

URL	RESOURCE SIZE	POTENTIAL SAVINGS
https://www.careyuk.com/wp-content/uploads/sites/36/2021/06/Hero-A-BG-2.jpg	247KB	145KB

Low

Avoid long main-thread tasks TBT

3 long tasks found

Lists the longest tasks on the main thread, useful for identifying worst contributors to input delay.

URL	START TIME	DURATION
https://www.careyuk.com/wp-includes/js/jquery/jquery.min.js?ver=3.7.1	751ms	126ms
https://www.googletagmanager.com/gtag/js?id=G-0P4YHBVPB2&l=dataLayer&cx=c	1.3s	77ms
https://www.googletagmanager.com/gtm.js?id=GTM-5J732QQ	985ms	76ms

Low

Reduce JavaScript execution time TBT

382ms spent executing JavaScript

Consider reducing the time spent parsing, compiling, and executing JS. You may find delivering smaller JS payloads helps with this.

URL	TOTAL CPU TIME	SCRIPT EVALUATION	SCRIPT PARSE
https://www.careyuk.com/wp-content/themes/sc-carey/dist/js/scripts.js?ver=1.0.2	221ms	108ms	1ms
Unattributable	156ms	16ms	0ms
https://www.careyuk.com/	151ms	6ms	1ms
https://www.googletagmanager.com/gtm.js?id=GTM-5J732QQ	121ms	117ms	3ms
https://www.googletagmanager.com/gtag/js?id=G-0P4YHBVPB2&l=dataLayer&cx=c	80ms	75ms	4ms
https://www.careyuk.com/wp-includes/js/jquery/jquery.min.js?ver=3.7.1	57ms	45ms	1ms

Low

Reduce unused CSS FCP LCP

Potential savings of 30.4KB

Reduce unused rules from stylesheets and defer CSS not used for above-the-fold content to decrease bytes consumed by network activity.

URL	TRANSFER SIZE	POTENTIAL SAVINGS
<ul style="list-style-type: none"> https://www.careyuk.com/wp-content/themes/sc-carey/dist/css/style.css?ver=6.4.3 	39.1KB	30.4KB

Low **Serve images in next-gen formats** Potential savings of 2.12MB

Image formats like WebP and AVIF often provide better compression than PNG or JPEG, which means faster downloads and less data consumption.

URL	RESOURCE SIZE	POTENTIAL SAVINGS
https://www.careyuk.com/wp-content/uploads/sites/36/2021/06/43889_cc2400_001_475-e1695144760567.png	1.51MB	1.38MB
https://www.careyuk.com/wp-content/uploads/sites/36/2021/06/2023-Mercedes-Benz-S-Class-Profile.png	616KB	507KB
https://www.careyuk.com/wp-content/uploads/sites/36/2021/06/Hero-A-BG-2.jpg	247KB	211KB
https://www.careyuk.com/wp-content/uploads/sites/36/2021/06/our-values-1_mobile.jpg	49.8KB	22.3KB
https://www.careyuk.com/wp-content/uploads/sites/36/2021/06/Viano-2020.jpg	50.1KB	21.9KB

Low **Reduce initial server response time** FCP LCP Root document took 162ms

Keep the server response time for the main document short because all other requests depend on it.

URL	TIME SPENT
<ul style="list-style-type: none"> https://www.careyuk.com/ 	162ms

Low **Defer offscreen images** Potential savings of 2.16MB

Consider lazy-loading offscreen and hidden images after all critical resources have finished loading to lower time to interactive.

URL	RESOURCE SIZE	POTENTIAL SAVINGS
https://www.careyuk.com/wp-content/uploads/sites/36/2021/06/43889_cc2400_001_475-e1695144760567.png	1.51MB	1.51MB
https://www.careyuk.com/wp-content/uploads/sites/36/2021/06/2023-Mercedes-Benz-S-Class-Profile.png	616KB	616KB
https://www.careyuk.com/wp-content/uploads/sites/36/2021/06/Viano-2020.jpg	50.1KB	50.1KB

Low **Avoid chaining critical requests** FCP LCP 9 chains found

The Critical Request Chains below show you what resources are loaded with a high priority. Consider reducing the length of chains, reducing the download size of resources, or deferring the download of unnecessary resources to improve page load.

Maximum critical path latency: **941ms**

INITIAL NAVIGATION



Low **Reduce unused JavaScript** LCP Potential savings of 138KB

Reduce unused JavaScript and defer loading scripts until they are required to decrease bytes consumed by network activity.

URL	TRANSFER SIZE	POTENTIAL SAVINGS
https://www.googletagmanager.com/gtag/js?id=G-0P4YHBVPB2&l=dataLayer&cx=c	94.0KB	42.0KB
https://www.googletagmanager.com/gtm.js?id=GTM-5J732QQ	81.5KB	39.6KB
https://www.googletagmanager.com/gtag/destination?id=AW-948643529&l=dataLayer&cx=c	74.6KB	34.3KB
https://connect.facebook.net/en_US/fbevents.js	58.1KB	21.6KB

N/A **Largest Contentful Paint element** LCP 1,450 ms

This is the largest contentful element painted within the viewport.

ELEMENT

Banner Image

```

```

PHASE	% OF LCP	TIMING
TTFB	14%	201ms
Load Delay	38%	543ms
Load Time	32%	465ms
Render Delay	16%	238ms

N/A **Avoid serving legacy JavaScript to modern browsers** TBT Potential savings of 10.9KB

Polyfills and transforms enable legacy browsers to use new JavaScript features. However, many aren't necessary for modern browsers. For your bundled JavaScript, adopt a modern script deployment strategy using module/nomodule feature detection to reduce the amount of code shipped to modern browsers, while retaining support for legacy browsers.

URL

POTENTIAL SAVINGS

https://connect.facebook.net/en_US/fbevents.js

10.8KB

Line:23 Column:2302

@babel/pug-classes

Line:24 Column:20141

Array.prototype.filter

Line:24 Column:26258

Array.from

Line:24 Column:28008

Array.prototype.map

Line:24 Column:28800

Array.prototype.find

<https://snap.licdn.com/li.lms-analytics/insight.min.js>

59B

Line:0 Column:680

@babel/pug-classes

https://connect.facebook.net/signals/config/1399918140846820?v=2.9.148&r=stable&domain=www.careyuk.com&hme=20c913bdcd4be51a752120153aa5caaecb3ee86c7f26cf737846e40b202aba68&ex_m=62%2C106%2C94%2C98%2C53%2C3%2C88%2C61%2C14%2C86%2C79%2C44%2C46%2C150%2C153%2C164%2C160%2C161%2C163%2C25%2C89%2C45%2C68%2C162%2C145%2C148%2C157%2C158%2C165%2C115%2C13%2C43%2C169%2C168%2C117%2C16%2C29%2C32%2C1%2C36%2C57%2C58%2C59%2C63%2C83%2C15%2C12%2C85%2C82%2C81%2C95%2C97%2C31%2C96%2C26%2C22%2C146%2C149%2C124%2C24%2C9%2C10%2C11%2C5%2C6%2C21%2C19%2C20%2C49%2C54%2C56%2C66%2C90%2C23%2C67%2C8%2C7%2C71%2C41%2C18%2C92%2C91%2C17%2C4%2C73%2C80%2C72%2C78%2C40%2C39%2C77%2C33%2C35%2C76%2C48%2C74%2C28%2C37%2C65%2C0%2C84%2C75%2C2%2C30%2C55%2C34%2C93%2C38%2C70%2C60%2C99%2C52%2C51%2C27%2C87%2C50%2C47%2C42%2C69%2C64%2C100

45B

Line:19 Column:2057

@babel/pug-classes

N/A	Minimize main-thread work TBT	Main-thread busy for 946ms
-----	-------------------------------	----------------------------

Consider reducing the time spent parsing, compiling and executing JS. You may find delivering smaller JS payloads helps with this.

CATEGORY	TIME SPENT
Script Evaluation	499ms
Other	242ms
Style & Layout	118ms
Rendering	36ms
Parse HTML & CSS	24ms
Script Parsing & Compilation	24ms

N/A

User Timing marks and measures

4 user timings

Consider instrumenting your app with the User Timing API to measure your app's real-world performance during key user experiences.

NAME	TYPE	START TIME	DURATION
fbevents:start:unwantedDataProcessing_1399918140846820	Mark	1.7s	0ms
fbevents:end:unwantedDataProcessing_1399918140846820	Mark	1.7s	0ms
fbevents:start:validateUrlProcessing_1399918140846820	Mark	1.7s	0ms
fbevents:end:validateUrlProcessing_1399918140846820	Mark	1.7s	0ms

N/A

Reduce the impact of third-party code TBT

Third-party code blocked the main thread for 43ms

Third-party code can significantly impact load performance. Limit the number of redundant third-party providers and try to load third-party code after your page has primarily finished loading.

THIRD-PARTY	TRANSFER SIZE	MAIN-THREAD BLOCKING TIME
GOOGLE TAG MANAGER	250KB	43ms
• https://www.googletagmanager.com/gtm.js?id=GTM-5J732QQ	81.5KB	22ms
• https://www.googletagmanager.com/gtag/js?id=G-0P4YHBVPB2&l=dataLayer&cx=c	94.0KB	21ms
• https://www.googletagmanager.com/gtag/destination?id=AW-948643529&l=dataLayer&cx=c	74.6KB	0ms
FACEBOOK	69.4KB	0ms
• https://connect.facebook.net/en_US/fbevents.js	58.1KB	0ms
• https://connect.facebook.net/signals/config/1399918140846820?v=2.9.148&r=stable&domain=www.careyuk.com&hme=20c913bdcd4be51a752120153aa5caaecb3ee86c7f26cf737846e40b202aba68&ex_m=62%2C106%2C94%2C98%2C53%2C3%2C88%2C61%2C14%2C86%2C79%2C44%2C46%2C150%2C153%2C164%2C160%2C161%2C163%2C25%2C89%2C45%2C68%2C162%2C145%2C148%2C157%2C158%2C165%2C115%2C13%2C43%2C169%2C168%2C117%2C16%2C29%2C32%2C1%2C36%2C57%2C58%2C59%2C63%2C83%2C15%2C12%2C85%2C82%2C81%2C95%2C97%2C31%2C96%2C26%2C22%2C146%2C149%2C124%2C24%2C9%2C10%2C11%2C5%2C6%2C21%2C19%2C20%2C49%2C54%2C56%2C66%2C90%2C23%2C67%2C8%2C7%2C71%2C41%2C18%2C92%2C91%2C17%2C4%2C73%2C80%2C72%2C78%2C40%2C39%2C77%2C33%2C35%2C76%2C48%2C74%2C28%2C37%2C65%2C0%2C84%2C75%2C2%2C30%2C55%2C34%2C93%2C38%2C70%2C60%2C99%2C52%2C51%2C27%2C87%2C50%2C47%2C42%2C69%2C64%2C100	11.0KB	0ms
LINKEDIN ADS	19.5KB	0ms
• https://snap.licdn.com/li.ims-analytics/insight.min.js	17.1KB	0ms
GOOGLE/DOUBLECLICK ADS	1.79KB	0ms

THIRD-PARTY

TRANSFER SIZE

MAIN-THREAD BLOCKING TIME

OTHER GOOGLE APIS/SDKS

910B

0ms

GOOGLE FONTS

889B

0ms

POLYFILL SERVICE

414B

0ms

N/A

Avoid large layout shifts CLS

Nothing to do here, good job!
