

Performance Report for: <http://www.airportsmadeeasy.com/>

Report generated: Sat, Mar 9, 2024 6:30 AM -0800
 Test Server Location: London, UK
 Using: Chrome 117.0.0.0, Lighthouse 11.0.0

| | | | | | |
|----------|-------------|-----------|---------------------|------------------|-----------------|
| B | Performance | Structure | L. Contentful Paint | T. Blocking Time | C. Layout Shift |
| | 75% | 92% | 3.4s | 39ms | 0.03 |

Top Issues

| | | |
|------|------------------------------------------------------------|----------------------------|
| High | Reduce initial server response time <small>FCP LCP</small> | Root document took 657ms |
| Low | Avoid multiple page redirects <small>FCP LCP</small> | Potential savings of 332ms |
| Low | Allow back/forward cache restoration | 1 failure reason |
| Low | Avoid enormous network payloads <small>LCP</small> | Total size was 2.39MB |
| Low | Avoid long main-thread tasks <small>TBT</small> | 6 long tasks found |

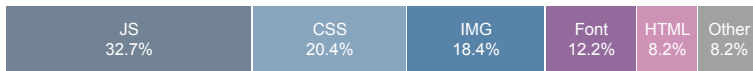
Page Details



Total Page Size - 2.38MB



Total Page Requests - 49



How does this affect me?

Today's web user expects a fast and seamless website experience. Delivering that fast experience can result in increased visits, conversions and overall happiness.

As if you didn't need more incentive, **Google has announced that they are using page speed in their ranking algorithm.**

About GTmetrix

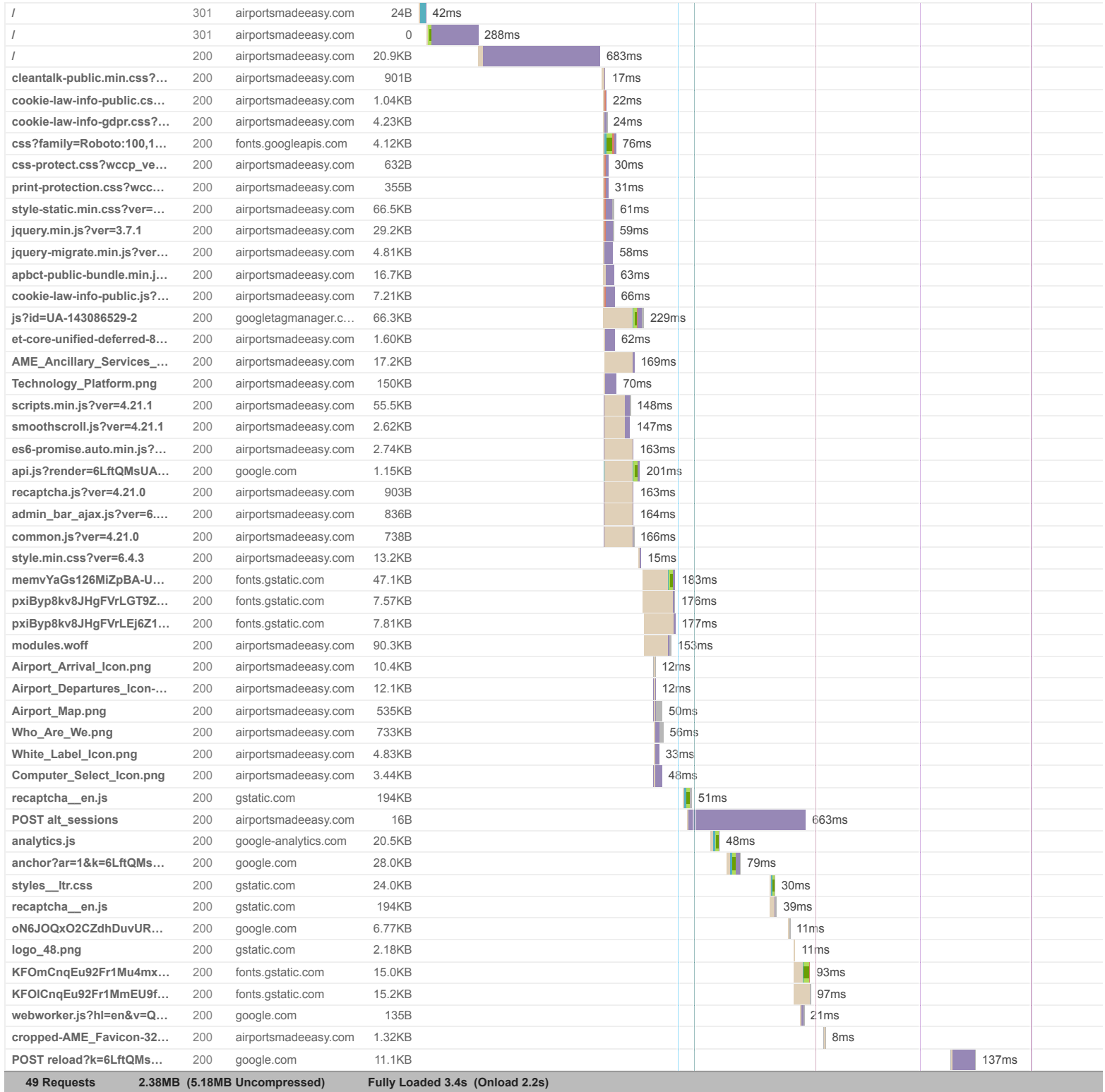


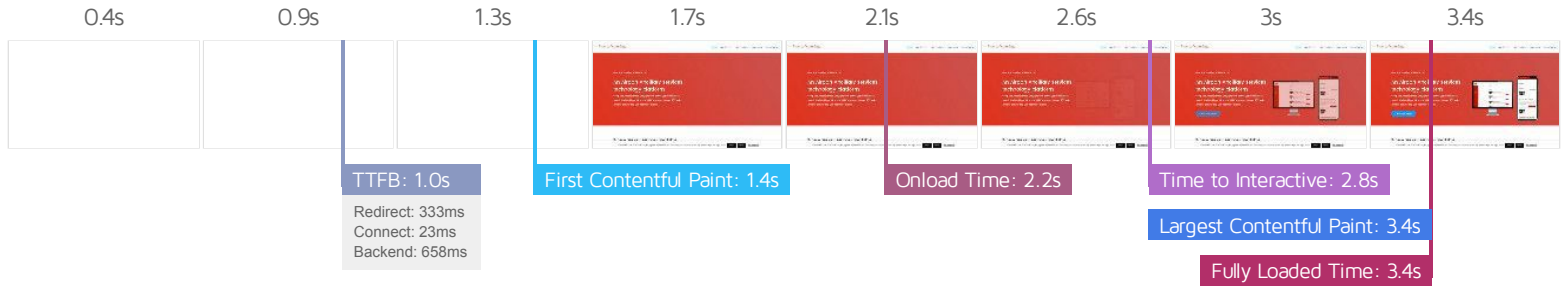
GTmetrix is developed by the good folks at **Carbon60**, a Canadian hosting company with over 28 years experience in web technology.

<https://carbon60.com/>

The waterfall chart displays the loading behaviour of your site in your selected browser. It can be used to discover simple issues such as 404's or more complex issues such as external resources blocking page rendering.

Home | Airports made Easy





Performance Metrics

| | | | |
|--------------------------------------------------------------------------------------------------------------------------------------------------------------------------------------------|--------------------------------------------------------|---------------------------------------------------------------------------------------------------------------------------------------------------------|--------------------------------------------------------|
| <p>First Contentful Paint</p> <p>How quickly content like text or images are painted onto your page. A good user experience is 0.9s or less.</p> | <p>Longer than recommended</p> <p>1.4s</p> | <p>Time to Interactive</p> <p>How long it takes for your page to become fully interactive. A good user experience is 2.5s or less.</p> | <p>OK, but consider improvement</p> <p>2.8s</p> |
| <p>Speed Index</p> <p>How quickly the contents of your page are visibly populated. A good user experience is 1.3s or less.</p> | <p>OK, but consider improvement</p> <p>1.7s</p> | <p>Total Blocking Time</p> <p>How much time is blocked by scripts during your page loading process. A good user experience is 150ms or less.</p> | <p>Good - Nothing to do here</p> <p>39ms</p> |
| <p>Largest Contentful Paint</p> <p>How long it takes for the largest element of content (e.g. a hero image) to be painted on your page. A good user experience is 1.2s or less.</p> | <p>Much longer than recommended</p> <p>3.4s</p> | <p>Cumulative Layout Shift</p> <p>How much your page's layout shifts as it loads. A good user experience is a score of 0.1 or less.</p> | <p>Good - Nothing to do here</p> <p>0.03</p> |

Browser Timings

| | | | | | |
|------------|-------|-------------|------|--------------|-------|
| Redirect | 333ms | Connect | 23ms | Backend | 658ms |
| TTFB | 1.0s | First Paint | 1.4s | DOM Int. | 1.5s |
| DOM Loaded | 1.5s | Onload | 2.2s | Fully Loaded | 3.4s |

IMPACT AUDIT

Low

Eliminate render-blocking resources FCP LCP

Potential savings of 55ms

Resources are blocking the first paint of your page. Consider delivering critical JS/CSS inline and deferring all non-critical JS/styles.

Resources that **may** be contributing to render-blocking include:

| URL | TRANSFER SIZE | DOWNLOAD TIME |
|-----------------------------------------------------------------------------------------------------------------------------------------------------------------------------------------------------------------------------------------------------------------------------------------------------------------------------------------------------------------------------------------------------------------------------------------------------------------------------------------------------------------------------------------------------------------------------------------------------------------------------------------------------------------------------------------------------------------------------------------------------------------------------------------------------------------------------------------------------------|---------------|---------------|
| https://fonts.googleapis.com/css?family=Roboto:100,100italic,300,300italic,regular,italic,500,500italic,700,700italic,900,900italic Open+Sans:300,regular,500,600,700,800,300italic,italic,500italic,600italic,700italic,800italic Poppins:100,100italic,200,200italic,300,300italic,regular,italic,500,500italic,600,600italic,700,700italic,800,800italic,900,900italic&subset=latin,latin-ext&display=swap | 4.12KB | 768ms |
| https://airportsmadeeasy.com/wp-content/themes/Divi/style-static.min.css?ver=4.21.1 | 66.5KB | 756ms |
| https://airportsmadeeasy.com/wp-includes/js/jquery/jquery.min.js?ver=3.7.1 | 29.2KB | 453ms |
| https://airportsmadeeasy.com/wp-content/plugins/cleantalk-spam-protect/js/apbct-public-bundle.min.js?ver=6.28 | 16.7KB | 302ms |

Low

Serve static assets with an efficient cache policy

Potential savings of 15.8KB

A long cache lifetime can speed up repeat visits to your page.

| URL | CACHE TTL | TRANSFER SIZE |
|---------------------------------------------------------------------------------------------------------------------|-----------|---------------|
| https://www.google-analytics.com/analytics.js | 2 hours | 20.8KB |
| https://www.gstatic.com/recaptcha/api2/logo_48.png | 7 days | 2.31KB |

Low

Reduce JavaScript execution time TBT

667ms spent executing JavaScript

Consider reducing the time spent parsing, compiling, and executing JS. You may find delivering smaller JS payloads helps with this.

| URL | TOTAL CPU TIME | SCRIPT EVALUATION | SCRIPT PARSE |
|-------------------------------------------------------------------------------------------------------------------------------------------------------------------------------------------------------------------------------------------|----------------|-------------------|--------------|
| https://www.gstatic.com/recaptcha/releases/QquE1_MNjFHgZF4HPsEcf_2/recaptcha_en.js | 430ms | 382ms | 16ms |
| https://airportsmadeeasy.com/ | 283ms | 19ms | 4ms |
| Unattributable | 198ms | 14ms | 0ms |
| https://airportsmadeeasy.com/wp-content/themes/Divi/js/scripts.min.js?ver=4.21.1 | 163ms | 67ms | 37ms |
| https://airportsmadeeasy.com/wp-includes/js/jquery/jquery.min.js?ver=3.7.1 | 98ms | 67ms | 1ms |
| https://airportsmadeeasy.com/wp-content/plugins/cleantalk-spam-protect/js/apbct-public-bundle.min.js?ver=6.28 | 98ms | 52ms | 2ms |

Low

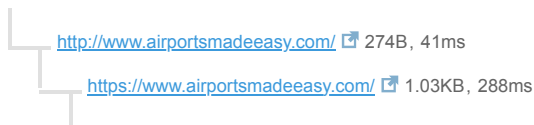
Avoid chaining critical requests FCP LCP

21 chains found

The Critical Request Chains below show you what resources are loaded with a high priority. Consider reducing the length of chains, reducing the download size of resources, or deferring the download of unnecessary resources to improve page load.

Maximum critical path latency: 1.4s

INITIAL NAVIGATION



https://airportsmadeeasy.com/ 20.9KB, 681ms

https://airportsmadeeasy.com/wp-content/plugins/cleantalk-spam-protect/css/cleantalk-public.min.css?ver=6.28 901B, 13ms

https://airportsmadeeasy.com/wp-content/et-cache/89/et-core-unified-deferred-89.min.css?ver=1683881279 1.60KB, 59ms

https://airportsmadeeasy.com/wp-content/plugins/wccp-pro/js/admin_bar_ajax.js?ver=6.4.3 836B, 11ms

https://airportsmadeeasy.com/wp-content/plugins/cleantalk-spam-protect/js/apbct-public-bundle.min.js?ver=6.28 16.7KB, 59ms

https://airportsmadeeasy.com/wp-content/themes/Divi/core/admin/js/common.js?ver=4.21.0 738B, 12ms

https://airportsmadeeasy.com/wp-content/themes/Divi/core/admin/js/recaptcha.js?ver=4.21.0 903B, 11ms

https://airportsmadeeasy.com/wp-content/themes/Divi/js/scripts.min.js?ver=4.21.1 55.5KB, 32ms

https://airportsmadeeasy.com/wp-includes/js/jquery/jquery.min.js?ver=3.7.1 29.2KB, 55ms

https://airportsmadeeasy.com/wp-content/themes/Divi/js/smoothscroll.js?ver=4.21.1 2.62KB, 31ms

https://airportsmadeeasy.com/wp-content/plugins/cookie-law-info/legacy/public/css/cookie-law-info-public.css?ver=3.2.0 1.04KB, 18ms

https://airportsmadeeasy.com/wp-includes/js/jquery/jquery-migrate.min.js?ver=3.4.1 4.81KB, 54ms

https://airportsmadeeasy.com/wp-content/plugins/wccp-pro/css/print-protection.css?wccp_ver_num=1&ver=6.4.3 355B, 27ms

https://www.google.com/recaptcha/api.js?render=6LfQM5UAAAAAC0upWxAwY250uFQXklB6FEJpKx&ver=4.21.0 1.15KB, 48ms

https://airportsmadeeasy.com/wp-content/plugins/cookie-law-info/legacy/public/css/cookie-law-info-gdpr.css?ver=3.2.0 4.23KB, 20ms

https://airportsmadeeasy.com/wp-content/plugins/wccp-pro/css-protect.css?wccp_ver_num=1&ver=10.9.2 632B, 27ms

https://airportsmadeeasy.com/wp-content/plugins/cookie-law-info/legacy/public/js/cookie-law-info-public.js?ver=3.2.0 7.21KB, 62ms

https://airportsmadeeasy.com/wp-content/themes/Divi/core/admin/js/es6-promise.auto.min.js?ver=4.21.0 2.74KB, 10ms

https://airportsmadeeasy.com/wp-content/themes/Divi/style-static.min.css?ver=4.21.1 66.5KB, 57ms

https://airportsmadeeasy.com/wp-content/themes/Divi/core/admin/fonts/modules/all/modules.woff 90.6KB, 20ms

https://fonts.googleapis.com/css?family=Roboto:100,100italic,300,300italic,regular,italic,500,500italic,700,700italic,900,900italic%7COpen+Sans:300,regular,500,600,700,800,300italic,italic,500italic,600italic&display=swap 4.12KB, 72ms

https://fonts.gstatic.com/s/opensans/v40/memvYaGs126MiZpBA-UvWbX2vVnXBbObj2OVTS-muw.woff2 47.2KB, 45ms

https://fonts.gstatic.com/s/poppins/v20/pxiByp8kv8JHgFVrLGT9Z1xIFQ.woff2 8.08KB, 42ms

https://fonts.gstatic.com/s/poppins/v20/pxiByp8kv8JHgFVrLEj6Z1xIFQ.woff2 7.92KB, 44ms

Low

Avoid an excessive DOM size TBT

383 elements

A large DOM will increase memory usage, cause longer style calculations, and produce costly layout reflows.

| STATISTIC | ELEMENT | VALUE |
|------------------------|-------------------------------------------------------------------------------------------------------------------------------------------------------------|-------|
| Total DOM Elements | | 383 |
| Maximum DOM Depth | div.et_pb_newsletter_fields > p.et_pb_newsletter_button_wrap > a.et_pb_newsletter_button > span.et_subscribe_loader | 18 |
| Maximum Child Elements | body.home <body class="home page-template-default page page-id-89 et_pb_button_helper_class et_fu..." style="overflow-x: hidden;"> | 26 |

Low

Properly size images

Potential savings of 883KB

Serve images that are appropriately-sized to save cellular data and improve load time.

| URL | RESOURCE SIZE | POTENTIAL SAVINGS |
|-----------------------------------------------------------------------------------------------------------------------------------------------------------------------------------------------|---------------|-------------------|
| https://airportsmadeeasy.com/wp-content/uploads/2019/03/Who_Are_We.png | 733KB | 440KB |
| https://airportsmadeeasy.com/wp-content/uploads/2019/03/Airport_Map.png | 535KB | 320KB |
| https://airportsmadeeasy.com/wp-content/uploads/2019/03/Technology_Platform.png | 150KB | 89.9KB |
| https://airportsmadeeasy.com/wp-content/uploads/2019/03/AME_Ancillary_Services_Logo.png | 17.2KB | 15.8KB |
| https://airportsmadeeasy.com/wp-content/uploads/2019/03/Airport_Departures_Icon-1.png | 12.1KB | 9.05KB |
| https://airportsmadeeasy.com/wp-content/uploads/2019/03/Airport_Arrival_Icon.png | 10.4KB | 7.78KB |

Low **Reduce unused CSS** FCP LCP Potential savings of 78.1KB

Reduce unused rules from stylesheets and defer CSS not used for above-the-fold content to decrease bytes consumed by network activity.

| URL | TRANSFER SIZE | POTENTIAL SAVINGS |
|-----------------------------------------------------------------------------------------------------------------------------------------------------------------------------------------------|---------------|-------------------|
| https://airportsmadeeasy.com/wp-content/themes/Divi/style-static.min.css?ver=4.21.1 | 66.5KB | 64.9KB |
| https://airportsmadeeasy.com/wp-includes/css/dist/block-library/style.min.css?ver=6.4.3 | 13.2KB | 13.2KB |

Low **Serve images in next-gen formats** Potential savings of 1.27MB

Image formats like WebP and AVIF often provide better compression than PNG or JPEG, which means faster downloads and less data consumption.

| URL | RESOURCE SIZE | POTENTIAL SAVINGS |
|-------------------------------------------------------------------------------------------------------------------------------------------------------------------------------------------|---------------|-------------------|
| https://airportsmadeeasy.com/wp-content/uploads/2019/03/Who_Are_We.png | 733KB | 661KB |
| https://airportsmadeeasy.com/wp-content/uploads/2019/03/Airport_Map.png | 535KB | 501KB |
| https://airportsmadeeasy.com/wp-content/uploads/2019/03/Technology_Platform.png | 150KB | 123KB |
| https://airportsmadeeasy.com/wp-content/uploads/2019/03/Airport_Departures_Icon-1.png | 12.1KB | 9.9KB |
| https://airportsmadeeasy.com/wp-content/uploads/2019/03/Airport_Arrival_Icon.png | 10.4KB | 8.62KB |

Low **Avoid non-composited animations** CLS 1 animated element found

Animations which are not composited can be janky and increase CLS.

| ELEMENT | NAME |
|--------------------------------------------------------------------------------------------------------------------------------------------------------------------------------------------------------|--------------|
| Home Our Services Our Products Our Clients Get in Touch <div id="et-top-navigation" data-height="96" data-fixed-height="40" style="padding-left: 236px;"> Unsupported CSS Property: padding-left | padding-left |

Low **Reduce unused JavaScript** LCP Potential savings of 167KB

Reduce unused JavaScript and defer loading scripts until they are required to decrease bytes consumed by network activity.

| URL | TRANSFER SIZE | POTENTIAL SAVINGS |
|---------------------------------------------------------------------------------------------------------------------------------------------------------------------------------------|---------------|-------------------|
| https://www.gstatic.com/recaptcha/releases/QquE1_MNjnFHgZF4HPsEcf_2/recaptcha_en.js | 195KB | 99KB |
| https://airportsmadeeasy.com/wp-content/themes/Divi/js/scripts.min.js?ver=4.21.1 | 55.5KB | 34.9KB |
| https://www.googletagmanager.com/gtag/js?id=UA-143086529-2 | 66.7KB | 33.3KB |

N/A **Largest Contentful Paint element** LCP 3,420 ms

This is the largest contentful element painted within the viewport.

ELEMENT

Technology Platform

```

```

| PHASE | % OF LCP | TIMING |
|--------------|----------|--------|
| TTFB | 30% | 1.0s |
| Load Delay | 1% | 25ms |
| Load Time | 2% | 67ms |
| Render Delay | 68% | 2.3s |

N/A **Avoid serving legacy JavaScript to modern browsers** TBT Potential savings of 41B

Polyfills and transforms enable legacy browsers to use new JavaScript features. However, many aren't necessary for modern browsers. For your bundled JavaScript, adopt a modern script deployment strategy using module/nomodule feature detection to reduce the amount of code shipped to modern browsers, while retaining support for legacy browsers.

| URL | POTENTIAL SAVINGS |
|-------------------------------------------------------------------------------------------------------------------------------------------------------------------------------------------------------------------------------------------|---------------------------------|
| https://airportsmadeeasy.com/wp-content/plugins/cleantalk-spam-protect/js/apbct-public-bundle.min.js?ver=6.28 | 41B |
| Line:0 Column:4239 | @babel/plugin-transform-classes |

N/A **Avoid large layout shifts** CLS 4 elements found

These DOM elements contribute most to the CLS of the page.

| ELEMENT | CLS CONTRIBUTION |
|--------------------------------------------------------------------------------------------------------------------------------------------------------------|------------------|
| Where are our services available With services in over 365 airports worldwide ... <div class="et_pb_section et_pb_section_1 et_section_specialty"> | 0.01 |
| Home Our Services Our Products Our Clients Get in Touch <div id="et-top-navigation" data-height="96" data-fixed-height="40" style="padding-left: 236px;"> | 0.01 |
| Where are our services available With services in over 365 airports worldwide ... <div class="et_pb_row"> | 0.01 |
| An Airport Ancillary services technology platform <h1> | 0.00 |

N/A

Minimize main-thread work TBT

Main-thread busy for 1.4s

Consider reducing the time spent parsing, compiling and executing JS. You may find delivering smaller JS payloads helps with this.

| CATEGORY | TIME SPENT |
|------------------------------|------------|
| Script Evaluation | 681ms |
| Other | 341ms |
| Style & Layout | 201ms |
| Script Parsing & Compilation | 68ms |
| Parse HTML & CSS | 51ms |
| Rendering | 28ms |
| Garbage Collection | 27ms |

N/A

Reduce the impact of third-party code TBT

Third-party code blocked the main thread for 12ms

Third-party code can significantly impact load performance. Limit the number of redundant third-party providers and try to load third-party code after your page has primarily finished loading.

| THIRD-PARTY | TRANSFER SIZE | MAIN-THREAD BLOCKING TIME |
|-----------------------------------------------------------------------------------------------------------------------------------------------------------------------------------------------------------------------------------------------------------------------------------------------------------------------------------------------------------------------------------------------------------------------------------------------------------------------------------------|---------------|---------------------------|
| GOOGLE CDN | 416KB | 12ms |
| • https://www.gstatic.com/recaptcha/releases/QquE1_MNjnFHgZF4HPsEcf_2/recaptcha_en.js | 390KB | 12ms |
| • https://www.gstatic.com/recaptcha/releases/QquE1_MNjnFHgZF4HPsEcf_2/styles_ltr.css | 24.6KB | 0ms |
| GOOGLE FONTS | 98KB | 0ms |
| • https://fonts.gstatic.com/s/opensans/v40/memvYaGs126MiZpBA-UvWbX2vVnXBbObj2OVTS-muw.woff2 | 47.2KB | 0ms |
| • https://fonts.gstatic.com/s/roboto/v18/KFOmCnqEu92Fr1Mu4mxK.woff2 | 15.5KB | 0ms |
| • https://fonts.gstatic.com/s/roboto/v18/KFOlCnqEu92Fr1MmEU9fBBc4.woff2 | 15.3KB | 0ms |
| • https://fonts.gstatic.com/s/poppins/v20/pxiByp8kv8JHgFVrLGT9Z1xIFQ.woff2 | 8.08KB | 0ms |
| • https://fonts.gstatic.com/s/poppins/v20/pxiByp8kv8JHgFVrLej6Z1xIFQ.woff2 | 7.92KB | 0ms |
| GOOGLE TAG MANAGER | 66.7KB | 0ms |
| • https://www.googletagmanager.com/gtag/js?id=UA-143086529-2 | 66.7KB | 0ms |
| OTHER GOOGLE APIS/SDKS | 47.5KB | 0ms |
| • https://www.google.com/recaptcha/api2/anchor?ar=1&k=6LfQM5UAAAAAC0upWxAdwY250uFQXkIB6FEJpKx&co=aHR0cHM6Ly9haXJwb3J0c21hZGVlYXN5LmNvbTo0NDM.&hl=en&v=QquE1_MNjnFHgZF4HPsEcf_2&size=invisible&cb=qxezv7u0huqx | 28.0KB | 0ms |
| • https://www.google.com/recaptcha/api2/reload?k=6LfQM5UAAAAAC0upWxAdwY250uFQXkIB6FEJpKx | 11.1KB | 0ms |
| • https://www.google.com/js/bg/oN6JQOxO2CZdhDuvURgc1WDqFpXrbMZ6mY5cTBya2tA.js | 7.17KB | 0ms |
| GOOGLE ANALYTICS | 20.8KB | 0ms |
| • https://www.google-analytics.com/analytics.js | 20.8KB | 0ms |

N/A

User Timing marks and measures

No user timings and/or marks found.
