

Performance Report for: <http://www.airporter.com/>

Report generated: Fri, Mar 8, 2024 10:15 PM -0800

Test Server Location: London, UK

Using: Chrome 117.0.0.0, Lighthouse 11.0.0

	Performance	Structure	L. Contentful Paint	T. Blocking Time	C. Layout Shift
	65%	84%	3.2s	0ms	0.01

Top Issues

High	Eliminate render-blocking resources <small>FCP LCP</small>	Potential savings of 4.1s
High	Reduce initial server response time <small>FCP LCP</small>	Root document took 1.4s
Med-Low	Use a Content Delivery Network (CDN)	34 resources found
Med-Low	Use HTTP/2 for all resources	Potential savings of 4.5s
Med-Low	Serve static assets with an efficient cache policy	Potential savings of 128KB

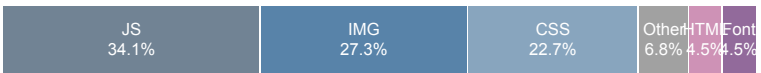
Page Details



Total Page Size - 1.42MB



Total Page Requests - 44



Legend: HTML JS CSS IMG Video Font Other

How does this affect me?

Today's web user expects a fast and seamless website experience. Delivering that fast experience can result in increased visits, conversions and overall happiness.

As if you didn't need more incentive, **Google has announced that they are using page speed in their ranking algorithm.**

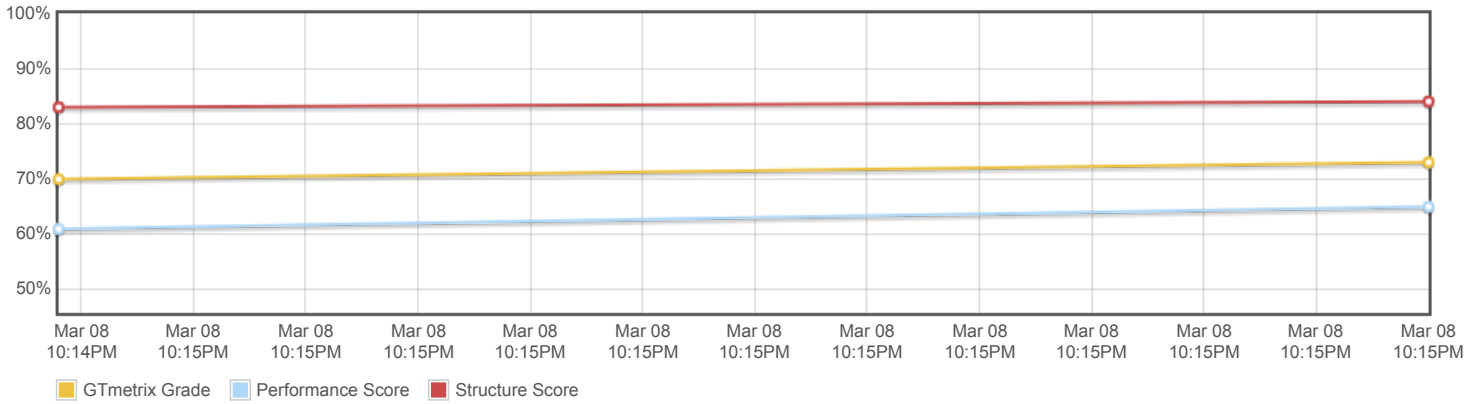
About GTmetrix



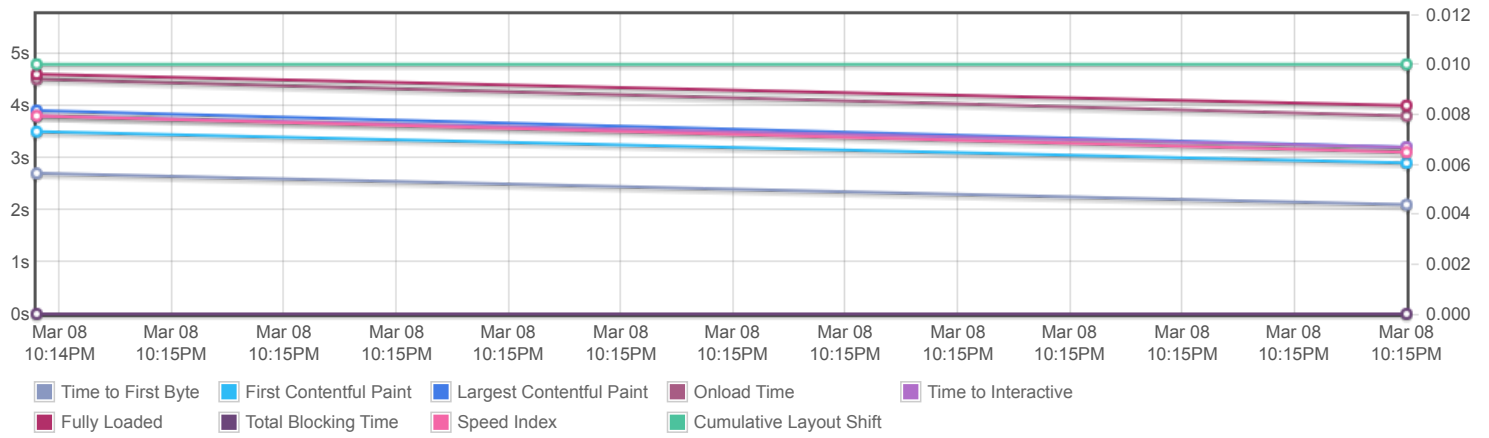
GTmetrix is developed by the good folks at **Carbon60**, a Canadian hosting company with over 28 years experience in web technology.

<https://carbon60.com/>

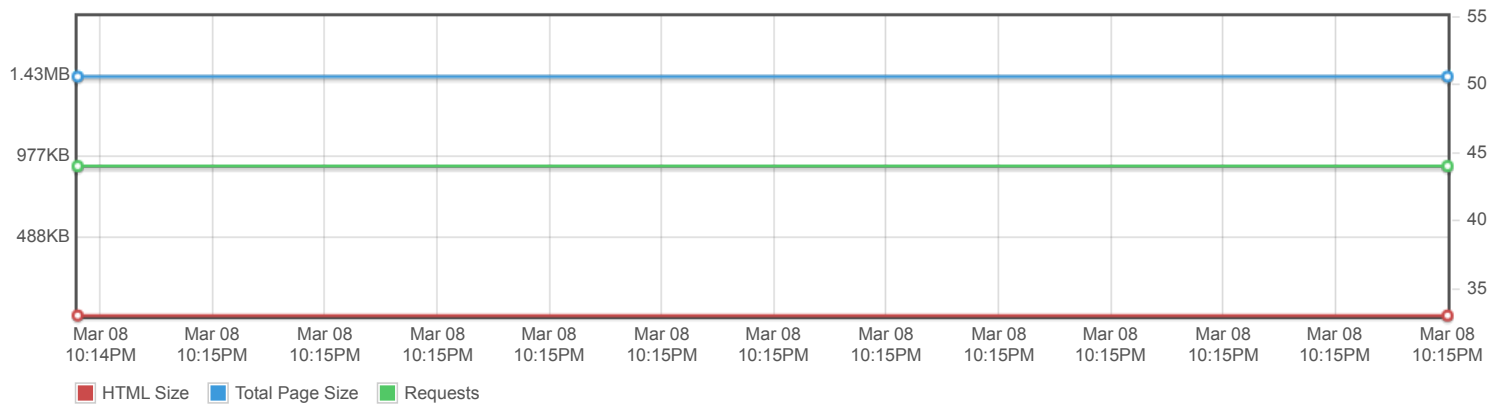
Page scores



Page metrics

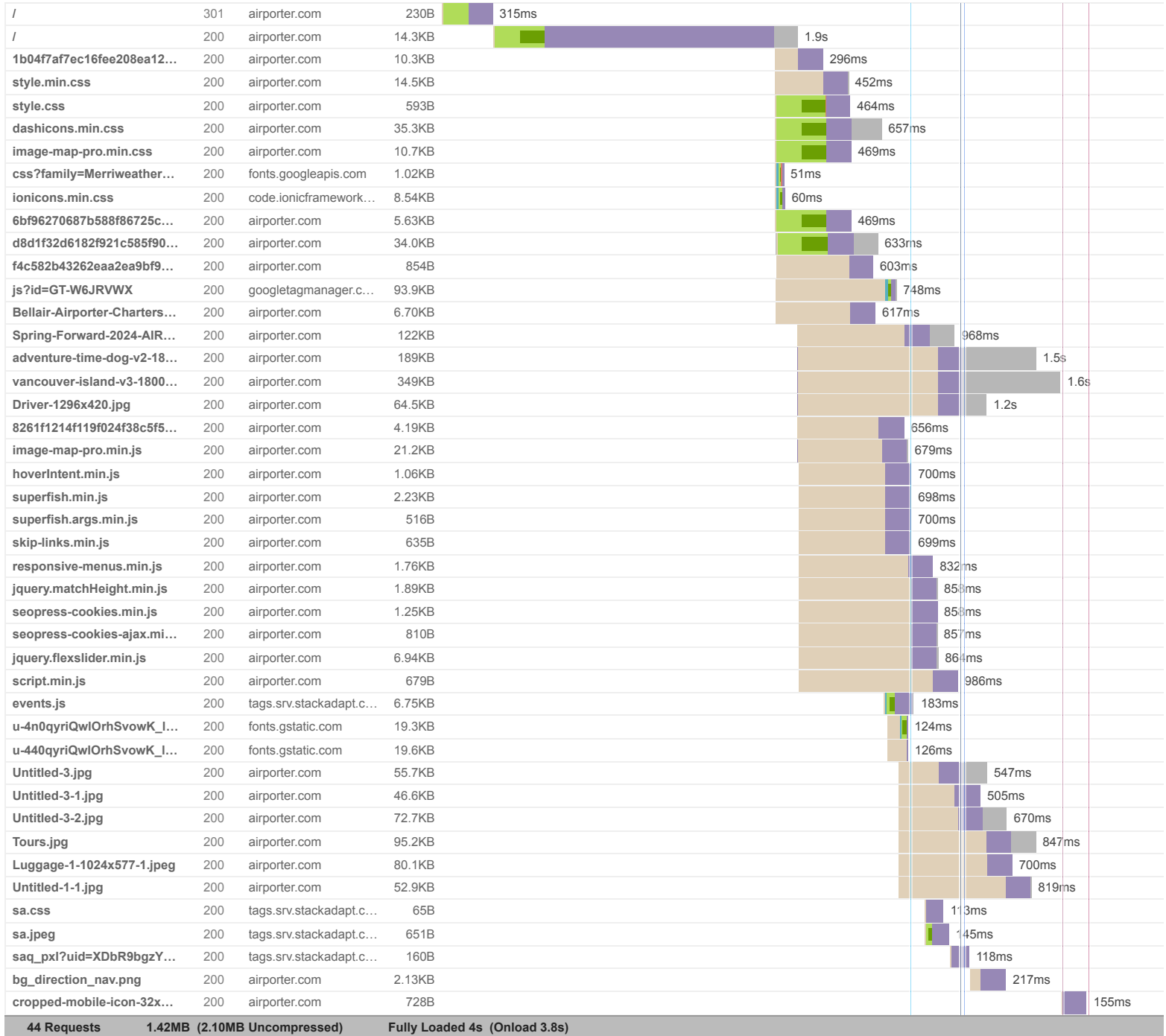


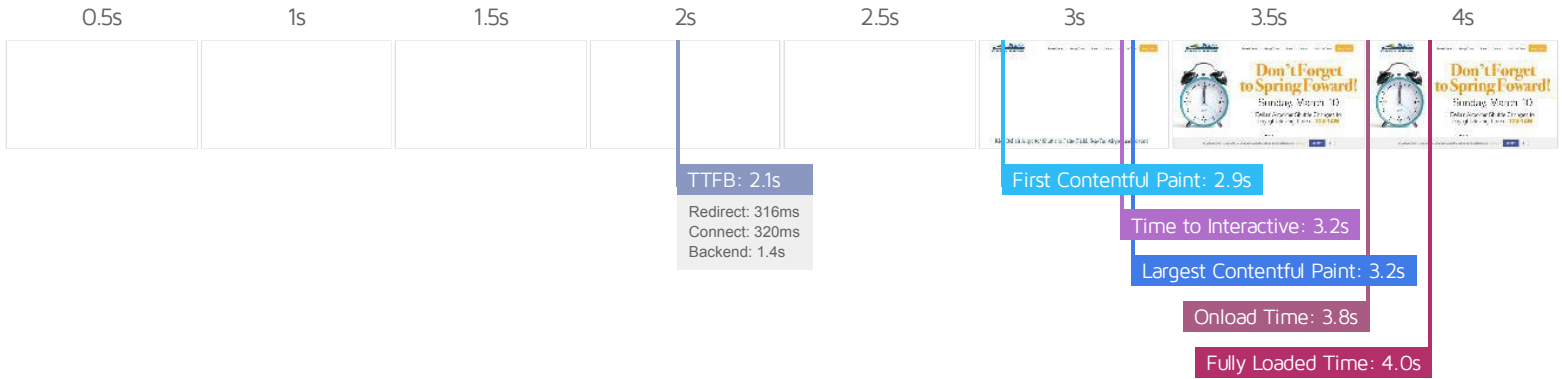
Page sizes and request counts



The waterfall chart displays the loading behaviour of your site in your selected browser. It can be used to discover simple issues such as 404's or more complex issues such as external resources blocking page rendering.

Bellair Airporter Shuttle - Airporter.com





Performance Metrics

<p>First Contentful Paint</p> <p>How quickly content like text or images are painted onto your page. A good user experience is 0.9s or less.</p>	<p>Much longer than recommended</p> <p>2.9s</p>	<p>Time to Interactive</p> <p>How long it takes for your page to become fully interactive. A good user experience is 2.5s or less.</p>	<p>OK, but consider improvement</p> <p>3.2s</p>
<p>Speed Index</p> <p>How quickly the contents of your page are visibly populated. A good user experience is 1.3s or less.</p>	<p>Much longer than recommended</p> <p>3.1s</p>	<p>Total Blocking Time</p> <p>How much time is blocked by scripts during your page loading process. A good user experience is 150ms or less.</p>	<p>Good - Nothing to do here</p> <p>0ms</p>
<p>Largest Contentful Paint</p> <p>How long it takes for the largest element of content (e.g. a hero image) to be painted on your page. A good user experience is 1.2s or less.</p>	<p>Much longer than recommended</p> <p>3.2s</p>	<p>Cumulative Layout Shift</p> <p>How much your page's layout shifts as it loads. A good user experience is a score of 0.1 or less.</p>	<p>Good - Nothing to do here</p> <p>0.01</p>

Browser Timings

Redirect	316ms	Connect	320ms	Backend	1.4s
TTFB	2.1s	First Paint	2.9s	DOM Int.	3.2s
DOM Loaded	3.2s	Onload	3.8s	Fully Loaded	4.0s

IMPACT AUDIT

Low

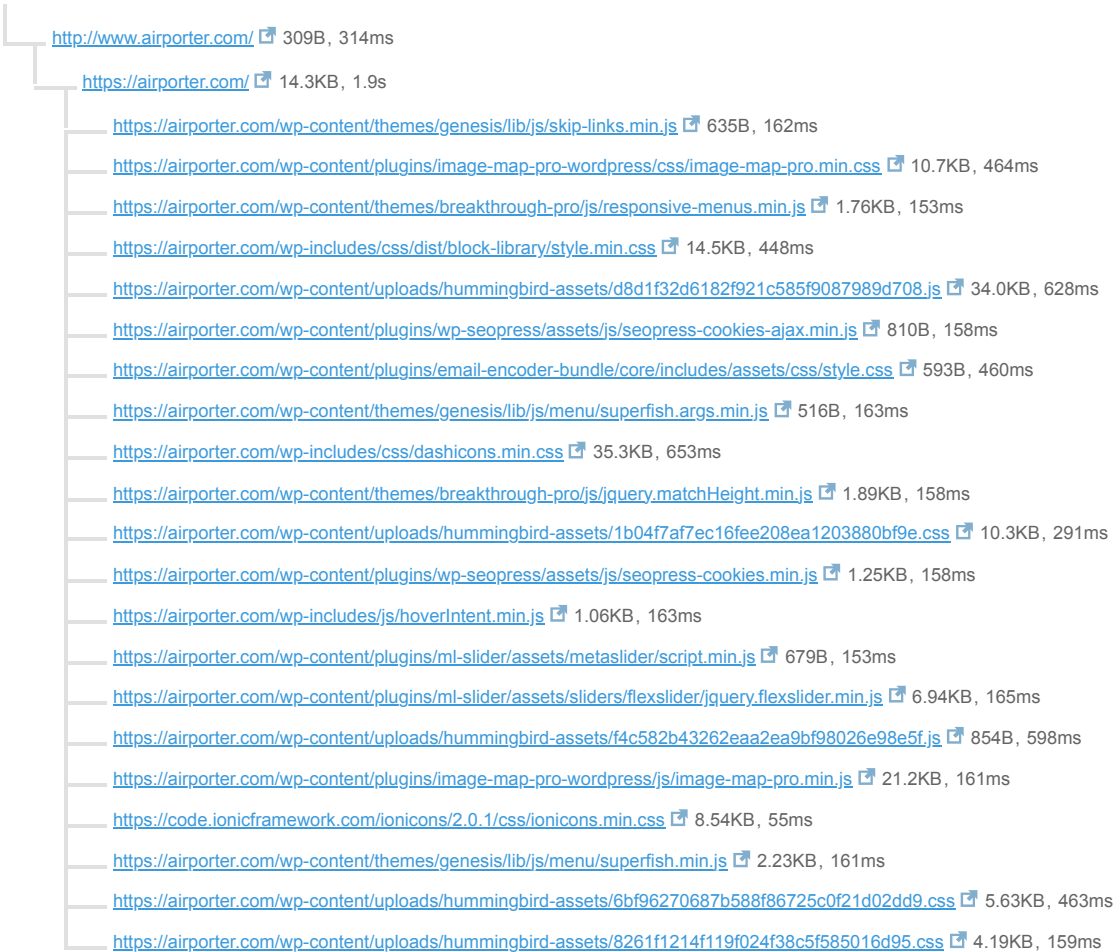
Avoid chaining critical requests FCP LCP

21 chains found

The Critical Request Chains below show you what resources are loaded with a high priority. Consider reducing the length of chains, reducing the download size of resources, or deferring the download of unnecessary resources to improve page load.

Maximum critical path latency: **3.2s**

INITIAL NAVIGATION



Low

Properly size images

Potential savings of 592KB

Serve images that are appropriately-sized to save cellular data and improve load time.

URL	RESOURCE SIZE	POTENTIAL SAVINGS
https://airporter.com/wp-content/uploads/2024/03/vancouver-island-v3-1800x745-AIR-1800x685.jpg	349KB	148KB
https://airporter.com/wp-content/uploads/2022/02/adventure-time-dog-v2-1800x745-1-1800x685.jpg	189KB	80.2KB
https://airporter.com/wp-content/uploads/2022/02/Tours.jpg	94.9KB	74.1KB
https://airporter.com/wp-content/uploads/2022/02/Luggage-1-1024x577-1.jpeg	79.8KB	70.0KB
https://airporter.com/wp-content/uploads/2022/08/Untitled-3-2.jpg	72.4KB	56.5KB
https://airporter.com/wp-content/uploads/2022/08/Untitled-3.jpg	55.4KB	43.2KB
https://airporter.com/wp-content/uploads/2024/01/Spring-Forward-2024-AIR-1800x645-1-1694x645.jpg	122KB	42.7KB
https://airporter.com/wp-content/uploads/2023/08/Untitled-1-1.jpg	52.6KB	41.1KB
https://airporter.com/wp-content/uploads/2022/08/Untitled-3-1.jpg	46.3KB	36.1KB

Low

Reduce unused CSS FCP LCP

Potential savings of 60.3KB

Reduce unused rules from stylesheets and defer CSS not used for above-the-fold content to decrease bytes consumed by network activity.

URL	TRANSFER SIZE	POTENTIAL SAVINGS
https://airporter.com/wp-includes/css/dashicons.min.css	35.3KB	35.3KB
https://airporter.com/wp-includes/css/dist/block-library/style.min.css	14.5KB	14.3KB
https://airporter.com/wp-content/plugins/image-map-pro-wordpress/css/image-map-pro.min.css	10.7KB	10.7KB

Low

Serve images in next-gen formats

Potential savings of 407KB

Image formats like WebP and AVIF often provide better compression than PNG or JPEG, which means faster downloads and less data consumption.

URL	RESOURCE SIZE	POTENTIAL SAVINGS
https://airporter.com/wp-content/uploads/2024/03/vancouver-island-v3-1800x745-AIR-1800x685.jpg	349KB	112KB
https://airporter.com/wp-content/uploads/2022/02/adventure-time-dog-v2-1800x745-1-1800x685.jpg	189KB	80.4KB
https://airporter.com/wp-content/uploads/2024/01/Spring-Forward-2024-AIR-1800x645-1-1694x645.jpg	122KB	55.7KB
https://airporter.com/wp-content/uploads/2022/02/Luggage-1-1024x577-1.jpeg	79.8KB	27.3KB
https://airporter.com/wp-content/uploads/2022/02/Tours.jpg	94.9KB	25.5KB
https://airporter.com/wp-content/uploads/2022/08/Untitled-3-2.jpg	72.4KB	25.2KB
https://airporter.com/wp-content/uploads/2021/05/Driver-1296x420.jpg	64.2KB	22.8KB
https://airporter.com/wp-content/uploads/2022/08/Untitled-3.jpg	55.4KB	20.4KB
https://airporter.com/wp-content/uploads/2023/08/Untitled-1-1.jpg	52.6KB	20.3KB
https://airporter.com/wp-content/uploads/2022/08/Untitled-3-1.jpg	46.3KB	17.5KB

Low

Avoid an excessive DOM size TBT

375 elements

A large DOM will increase memory usage, cause longer style calculations, and produce costly layout reflows.

STATISTIC	ELEMENT	VALUE
Total DOM Elements		375
Maximum DOM Depth	Bellingham to Sea-Tac Airport 	16
Maximum Child Elements	body.home <body class="home page-template-default page page-id-7 wp-custom-logo wp-embed-responsi..." itemscope="" itemType="https://schema.org/WebPage">	22

Low

Avoid enormous network payloads LCP

Total size was 1.43MB

Large network payloads cost users real money and are highly correlated with long load times.

URL	TRANSFER SIZE
https://airporter.com/wp-content/uploads/2024/03/vancouver-island-v3-1800x745-AIR-1800x685.jpg	349KB
https://airporter.com/wp-content/uploads/2022/02/adventure-time-dog-v2-1800x745-1-1800x685.jpg	189KB
https://airporter.com/wp-content/uploads/2024/01/Spring-Forward-2024-AIR-1800x645-1-1694x645.jpg	122KB
https://airporter.com/wp-content/uploads/2022/02/Tours.jpg	95.2KB
https://www.googletagmanager.com/gtag/js?id=GT-W6JRVWX	94.3KB
https://airporter.com/wp-content/uploads/2022/02/Luggage-1-1024x577-1.jpeg	80.1KB
https://airporter.com/wp-content/uploads/2022/08/Untitled-3-2.jpg	72.7KB
https://airporter.com/wp-content/uploads/2021/05/Driver-1296x420.jpg	64.5KB
https://airporter.com/wp-content/uploads/2022/08/Untitled-3.jpg	55.7KB
https://airporter.com/wp-content/uploads/2023/08/Untitled-1-1.jpg	52.9KB

Low

Avoid multiple page redirects FCP LCP

Potential savings of 315ms

Redirects introduce additional delays before the page can be loaded.

URL	TIME SPENT
http://www.airporter.com/	315ms
https://airporter.com/	0ms

Low

Avoid long main-thread tasks TBT

1 long task found

Lists the longest tasks on the main thread, useful for identifying worst contributors to input delay.

URL	START TIME	DURATION
https://airporter.com/	2.7s	80ms

Low

Reduce JavaScript execution time TBT

146ms spent executing JavaScript

Consider reducing the time spent parsing, compiling, and executing JS. You may find delivering smaller JS payloads helps with this.

URL	TOTAL CPU TIME	SCRIPT EVALUATION	SCRIPT PARSE
• https://airporter.com/	182ms	21ms	2ms
• Unattributable	103ms	9ms	0ms
• https://airporter.com/wp-content/uploads/hummingbird-assets/d8d1f32d6182f921c585f9087989d708.js	71ms	46ms	1ms
• https://www.googletagmanager.com/gtag/js?id=GT-W6JRVWX	67ms	61ms	4ms

Low **Defer offscreen images** Potential savings of 64.2KB

Consider lazy-loading offscreen and hidden images after all critical resources have finished loading to lower time to interactive.

URL	RESOURCE SIZE	POTENTIAL SAVINGS
https://airporter.com/wp-content/uploads/2021/05/Driver-1296x420.jpg	64.2KB	64.2KB

Low **Reduce unused JavaScript** LCP Potential savings of 42.6KB

Reduce unused JavaScript and defer loading scripts until they are required to decrease bytes consumed by network activity.

URL	TRANSFER SIZE	POTENTIAL SAVINGS
https://www.googletagmanager.com/gtag/js?id=GT-W6JRVWX	94.3KB	42.6KB

N/A **Largest Contentful Paint element** LCP 3,220 ms

This is the largest contentful element painted within the viewport.

ELEMENT

Spring Forward 2024 Air 1800x645

```

```

PHASE	% OF LCP	TIMING
TTFB	64%	2.1s
Load Delay	24%	769ms
Load Time	11%	351ms
Render Delay	2%	48ms

N/A **Avoid large layout shifts** CLS 2 elements found

These DOM elements contribute most to the CLS of the page.

ELEMENT

CLS CONTRIBUTION

Ride Bellair Airporter Shuttle to Paine Field, Sea-Tac Airport and beyond! Gro...

```
<div class="site-inner">
```

0.01

Group Travel Private charters are convenient and easy giving you the tools nee...

```
<div class="entry-content" itemprop="text">
```

0.00

N/A **Minimize main-thread work** TBT Main-thread busy for 491ms

Consider reducing the time spent parsing, compiling and executing JS. You may find delivering smaller JS payloads helps with this.

CATEGORY

TIME SPENT

Script Evaluation

168ms

Other

148ms

Style & Layout

120ms

Parse HTML & CSS

23ms

Rendering

17ms

Script Parsing & Compilation

11ms

Garbage Collection

2ms

N/A **Reduce the impact of third-party code** TBT Total size was 152KB

Third-party code can significantly impact load performance. Limit the number of redundant third-party providers and try to load third-party code after your page has primarily finished loading.

THIRD-PARTY

TRANSFER SIZE

MAIN-THREAD BLOCKING TIME

GOOGLE TAG MANAGER

94.3KB

0ms

- <https://www.googletagmanager.com/gtag/js?id=GT-W6JRVWX>

94.3KB

0ms

GOOGLE FONTS

40.5KB

0ms

- https://fonts.gstatic.com/s/merriweather/v30/u-4n0gyriQwIOrhSvovK_I52xwNZWMf6.woff2

19.8KB

0ms

- https://fonts.gstatic.com/s/merriweather/v30/u-440gyriQwIOrhSvovK_I5-fCZM.woff2

19.7KB

0ms

STACKADAPT

8.88KB

0ms

- <https://tags.srv.stackadapt.com/events.js>

6.75KB

0ms

IONICFRAMEWORK.COM

8.54KB

0ms

- <https://code.ionicframework.com/ionicons/2.0.1/css/ionicons.min.css>

8.54KB

0ms

N/A **Avoid serving legacy JavaScript to modern browsers** TBT

Nothing to do here, good job!

No user timings and/or marks found.
