



Performance Report for: <http://www.abbeycar.co.uk/>

Report generated: Sun, Mar 10, 2024 11:11 AM -0700
 Test Server Location: London, UK
 Using: Chrome 117.0.0.0, Lighthouse 11.0.0

A	Performance	Structure	L. Contentful Paint	T. Blocking Time	C. Layout Shift
	99%	97%	697ms	0ms	0

Top Issues

Low	Avoid multiple page redirects <small>FCP LCP</small>	Potential savings of 336ms
Low	Eliminate render-blocking resources <small>FCP LCP</small>	Potential savings of 25ms
Low	Avoid enormous network payloads <small>LCP</small>	Total size was 561KB
Low	Ensure text remains visible during webfont load <small>FCP LCP</small>	4 fonts found
Low	Avoid long main-thread tasks <small>TBT</small>	1 long task found

Page Details



Total Page Size - 558KB



Total Page Requests - 54



Legend: HTML JS CSS IMG Video Font Other

How does this affect me?

Today's web user expects a fast and seamless website experience. Delivering that fast experience can result in increased visits, conversions and overall happiness.

As if you didn't need more incentive, **Google has announced that they are using page speed in their ranking algorithm.**

About GTmetrix

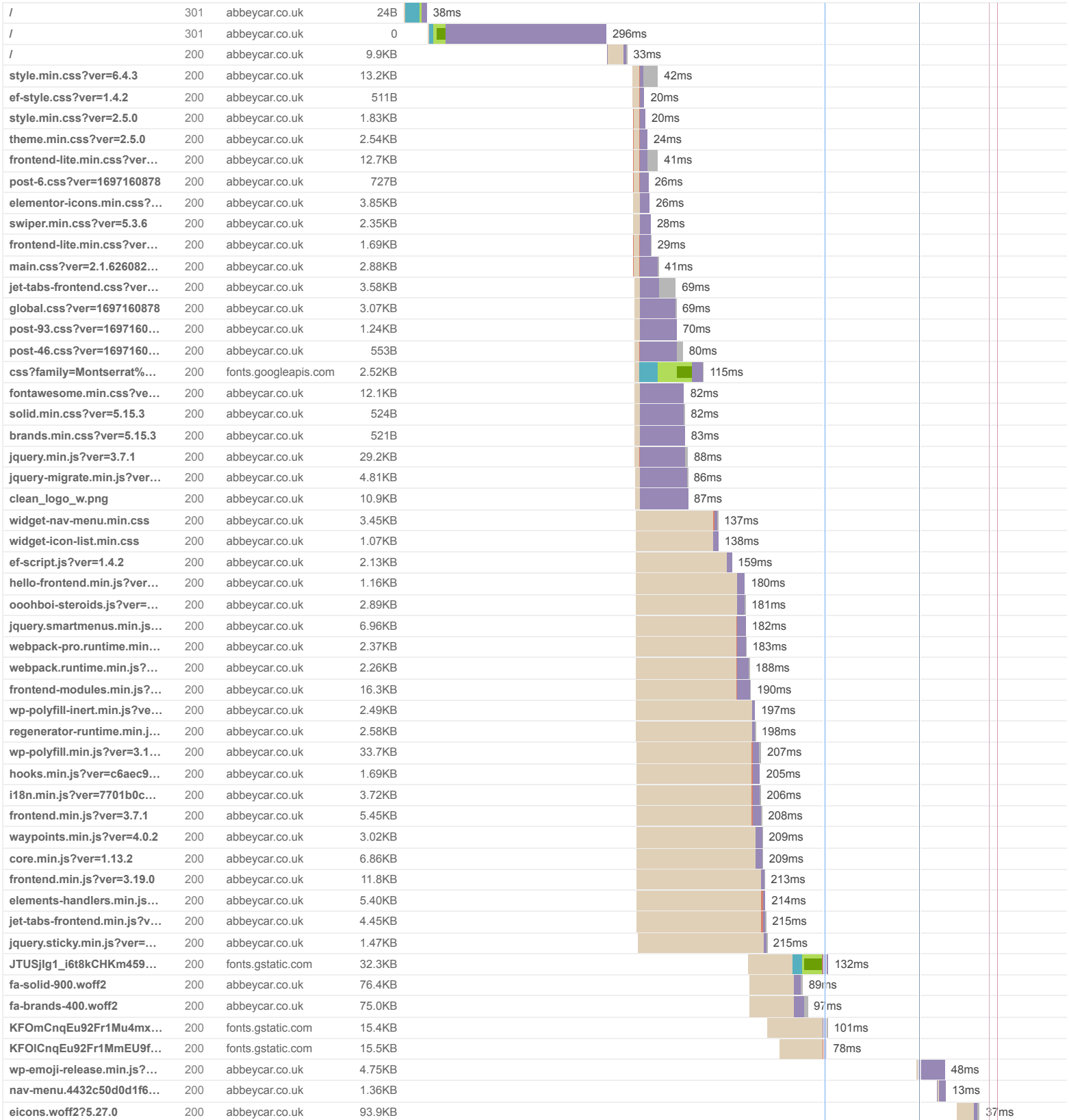


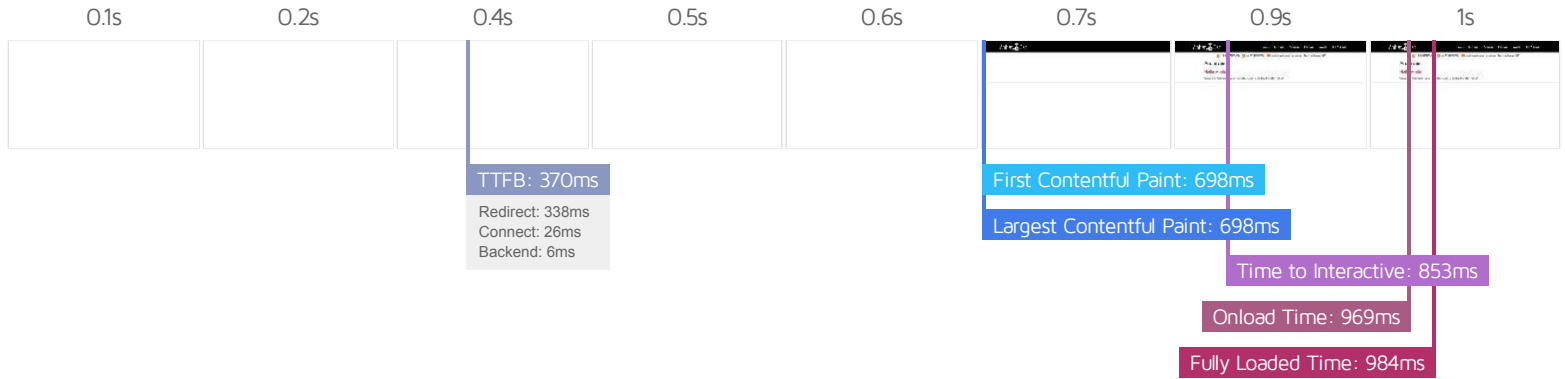
GTmetrix is developed by the good folks at **Carbon60**, a Canadian hosting company with over 28 years experience in web technology.

<https://carbon60.com/>

The waterfall chart displays the loading behaviour of your site in your selected browser. It can be used to discover simple issues such as 404's or more complex issues such as external resources blocking page rendering.

Abbey car





Performance Metrics

<p>First Contentful Paint</p> <p>How quickly content like text or images are painted onto your page. A good user experience is 0.9s or less.</p>	<p>Good - Nothing to do here</p> <p>697ms</p>	<p>Time to Interactive</p> <p>How long it takes for your page to become fully interactive. A good user experience is 2.5s or less.</p>	<p>Good - Nothing to do here</p> <p>852ms</p>
<p>Speed Index</p> <p>How quickly the contents of your page are visibly populated. A good user experience is 1.3s or less.</p>	<p>Good - Nothing to do here</p> <p>710ms</p>	<p>Total Blocking Time</p> <p>How much time is blocked by scripts during your page loading process. A good user experience is 150ms or less.</p>	<p>Good - Nothing to do here</p> <p>0ms</p>
<p>Largest Contentful Paint</p> <p>How long it takes for the largest element of content (e.g. a hero image) to be painted on your page. A good user experience is 1.2s or less.</p>	<p>Good - Nothing to do here</p> <p>697ms</p>	<p>Cumulative Layout Shift</p> <p>How much your page's layout shifts as it loads. A good user experience is a score of 0.1 or less.</p>	<p>Good - Nothing to do here</p> <p>0</p>

Browser Timings

Redirect	338ms	Connect	26ms	Backend	6ms
TTFB	370ms	First Paint	698ms	DOM Int.	850ms
DOM Loaded	853ms	Onload	969ms	Fully Loaded	984ms

IMPACT AUDIT

Low

Reduce unused CSS FCP LCP

Potential savings of 37.6KB

Reduce unused rules from stylesheets and defer CSS not used for above-the-fold content to decrease bytes consumed by network activity.

URL	TRANSFER SIZE	POTENTIAL SAVINGS
https://abbeycar.co.uk/wp-includes/css/dist/block-library/style.min.css?ver=6.4.3	13.2KB	13.2KB
https://abbeycar.co.uk/wp-content/plugins/elementor/assets/css/frontend-lite.min.css?ver=3.19.0	12.7KB	12.4KB
https://abbeycar.co.uk/wp-content/plugins/elementor/assets/lib/font-awesome/css/fontawesome.min.css?ver=5.15.3	12.1KB	12.0KB

Low

Avoid chaining critical requests FCP LCP

43 chains found

The Critical Request Chains below show you what resources are loaded with a high priority. Consider reducing the length of chains, reducing the download size of resources, or deferring the download of unnecessary resources to improve page load.

Maximum critical path latency: **953ms**

INITIAL NAVIGATION



- <https://abbeycar.co.uk/wp-content/plugins/elementor-pro/assets/css/frontend-lite.min.css?ver=3.7.1> 1.69KB, 23ms
- <https://abbeycar.co.uk/wp-content/plugins/elementor-pro/assets/js/webpack-pro.runtime.min.js?ver=3.7.1> 2.37KB, 23ms
- <https://abbeycar.co.uk/wp-content/themes/hello-elementor/assets/js/hello-frontend.min.js?ver=1.0.0> 1.16KB, 21ms
- <https://abbeycar.co.uk/wp-includes/js/jquery/ui/core.min.js?ver=1.13.2> 6.86KB, 11ms
- <https://abbeycar.co.uk/wp-content/plugins/elementor/assets/js/webpack.runtime.min.js?ver=3.19.0> 2.26KB, 28ms
- <https://abbeycar.co.uk/wp-content/themes/hello-elementor/style.min.css?ver=2.5.0> 1.83KB, 14ms
- <https://abbeycar.co.uk/wp-content/plugins/elementor/assets/css/widget-icon-list.min.css> 1.07KB, 8ms
- <https://abbeycar.co.uk/wp-content/plugins/elementor-pro/assets/js/elements-handlers.min.js?ver=3.7.1> 5.40KB, 7ms
- <https://abbeycar.co.uk/wp-content/plugins/elementorfilter/ef-script.js?ver=1.4.2> 2.13KB, 8ms
- <https://abbeycar.co.uk/wp-content/uploads/elementor/css/global.css?ver=1697160878> 3.07KB, 63ms
- <https://abbeycar.co.uk/wp-content/plugins/elementor/assets/js/frontend.min.js?ver=3.19.0> 11.8KB, 8ms
- <https://abbeycar.co.uk/wp-content/plugins/elementor-pro/assets/lib/smartmenus/jquery.smartmenus.min.js?ver=1.0.1> 6.96KB, 22ms
- <https://abbeycar.co.uk/wp-content/plugins/elementor-pro/assets/js/frontend.min.js?ver=3.7.1> 5.45KB, 16ms
- <https://abbeycar.co.uk/wp-includes/js/dist/i18n.min.js?ver=7701b0c3857f914212ef> 3.72KB, 15ms
- <https://abbeycar.co.uk/wp-content/plugins/jet-tabs/assets/css/jet-tabs-frontend.css?ver=2.1.17> 3.58KB, 63ms
- <https://abbeycar.co.uk/wp-content/plugins/elementor/assets/lib/eicons/css/elementor-icons.min.css?ver=5.27.0> 3.85KB, 20ms
- <https://abbeycar.co.uk/wp-content/plugins/elementor/assets/lib/eicons/fonts/eicons.woff2?5.27.0> 94.2KB, 9ms
- <https://abbeycar.co.uk/wp-content/plugins/elementor/assets/lib/font-awesome/css/brands.min.css?ver=5.15.3> 521B, 77ms
- <https://abbeycar.co.uk/wp-content/plugins/elementor/assets/lib/font-awesome/webfonts/fa-brands-400.woff2> 75.3KB, 24ms
- <https://abbeycar.co.uk/wp-content/plugins/elementor/assets/lib/font-awesome/css/solid.min.css?ver=5.15.3> 524B, 77ms
- <https://abbeycar.co.uk/wp-content/plugins/elementor/assets/lib/font-awesome/webfonts/fa-solid-900.woff2> 76.7KB, 16ms
- <https://fonts.googleapis.com/css?family=Montserrat%3A100%2C100italic%2C200%2C200italic%2C300%2C300italic%2C400%2C400italic%2C500%2C500italic%2C600%2C600italic%2C700%2C700italic> 2.52KB, 109ms
- https://fonts.gstatic.com/s/montserrat/v26/JTUSjlg1_i6t8kCHKm459Wlhyw.woff2 32.4KB, 59ms
- <https://fonts.gstatic.com/s/roboto/v30/KFOlCnqEu92Fr1MmEU9fBBc4.woff2> 16.1KB, 27ms
- <https://fonts.gstatic.com/s/roboto/v30/KFOmCngEu92Fr1Mu4mxK.woff2> 15.5KB, 28ms

N/A	Avoid an excessive DOM size TBT	119 elements
-----	--	--------------

A large DOM will increase memory usage, cause longer style calculations, and produce costly layout reflows.

STATISTIC	ELEMENT	VALUE
Total DOM Elements		119
Maximum DOM Depth	Home 	17
Maximum Child Elements	body.blog <body class="blog wp-custom-logo elementor-default elementor-kit-6 e--ua-blink e--ua-ch..." data-elementor-device-mode="desktop">	30

N/A	Largest Contentful Paint element LCP	700 ms
-----	---	--------

This is the largest contentful element painted within the viewport.

ELEMENT

```
div.elementor-element > div.elementor-widget-container > a > img.attachment-large

```

PHASE	% OF LCP	TIMING
TTFB	53%	369ms
Load Delay	3%	20ms
Load Time	12%	81ms
Render Delay	32%	225ms

N/A **Reduce JavaScript execution time** TBT 99ms spent executing JavaScript

Consider reducing the time spent parsing, compiling, and executing JS. You may find delivering smaller JS payloads helps with this.

URL	TOTAL CPU TIME	SCRIPT EVALUATION	SCRIPT PARSE
• Unattributable	190ms	6ms	0ms
• https://abbeycar.co.uk/	177ms	25ms	2ms
• https://abbeycar.co.uk/wp-includes/js/jquery/jquery.min.js?ver=3.7.1	67ms	49ms	14ms

N/A **Reduce initial server response time** FCP LCP Root document took 5ms

Keep the server response time for the main document short because all other requests depend on it.

URL	TIME SPENT
• https://abbeycar.co.uk/	5ms

N/A **Avoid serving legacy JavaScript to modern browsers** TBT Potential savings of 116B

Polyfills and transforms enable legacy browsers to use new JavaScript features. However, many aren't necessary for modern browsers. For your bundled JavaScript, adopt a modern script deployment strategy using module/nomodule feature detection to reduce the amount of code shipped to modern browsers, while retaining support for legacy browsers.

URL	POTENTIAL SAVINGS
https://abbeycar.co.uk/wp-content/themes/hello-elementor/assets/js/hello-frontend.min.js?ver=1.0.0 Line:0 Column:103	64B
https://abbeycar.co.uk/wp-includes/js/dist/vendor/wp-polyfill-inert.min.js?ver=3.1.2 Line:0 Column:452	52B

N/A

Avoid large layout shifts CLS

5 elements found

These DOM elements contribute most to the CLS of the page.

ELEMENT	CLS CONTRIBUTION
Home Services Airports Minicab Events Get A Quote <ul id="menu-1-1017b37" class="elementor-nav-menu" data-smartmenus-id="17100942730135383">	0.00
bookings@abbeycar.co.uk <li class="elementor-icon-list-item elementor-inline-item">	0.00
+442087487474 <li class="elementor-icon-list-item elementor-inline-item">	0.00
Opening hours 24/7 <li class="elementor-icon-list-item elementor-inline-item">	0.00
+447909333978 <li class="elementor-icon-list-item elementor-inline-item">	0.00

N/A

Minimize main-thread work TBT

Main-thread busy for 595ms

Consider reducing the time spent parsing, compiling and executing JS. You may find delivering smaller JS payloads helps with this.

CATEGORY	TIME SPENT
Other	254ms
Script Evaluation	155ms
Style & Layout	115ms
Parse HTML & CSS	36ms
Script Parsing & Compilation	27ms
Rendering	4ms
Garbage Collection	2ms

N/A

Reduce the impact of third-party code TBT

Total size was 66.5KB

Third-party code can significantly impact load performance. Limit the number of redundant third-party providers and try to load third-party code after your page has primarily finished loading.

THIRD-PARTY**TRANSFER SIZE****MAIN-THREAD BLOCKING TIME****GOOGLE FONTS**

- https://fonts.gstatic.com/s/montserrat/v26/JTUSjlg1_i6t8kCHKm459Wlhyw.woff2
- <https://fonts.gstatic.com/s/roboto/v30/KFOICnqEu92Fr1MmEU9fBBc4.woff2>
- <https://fonts.gstatic.com/s/roboto/v30/KFOmCnqEu92Fr1Mu4mxK.woff2>

66.5KB

0ms

32.4KB

0ms

16.1KB

0ms

15.5KB

0ms

N/A

User Timing marks and measures

No user timings and/or marks found.
