

Performance Report for: <https://turbine.ai/>

Report generated: Mon, Mar 11, 2024 11:50 PM -0700
 Test Server Location: London, UK
 Using: Chrome 117.0.0.0, Lighthouse 11.0.0

E	Performance	Structure	L. Contentful Paint	T. Blocking Time	C. Layout Shift
	45%	79%	3.1s	646ms	0.07

Top Issues

Med	Avoid enormous network payloads <small>LCP</small>	Total size was 3.91MB
Med	Avoid long main-thread tasks <small>TBT</small>	20 long tasks found
Med	Use a Content Delivery Network (CDN)	140 resources found
Med	Use explicit width and height on image elements <small>CLS</small>	107 images found
Med	Serve static assets with an efficient cache policy	Potential savings of 3.33MB

Page Details



Total Page Size - 3.91MB



Total Page Requests - 164



Legend: HTML JS CSS IMG Video Font Other

How does this affect me?

Today's web user expects a fast and seamless website experience. Delivering that fast experience can result in increased visits, conversions and overall happiness.

As if you didn't need more incentive, **Google has announced that they are using page speed in their ranking algorithm.**

About GTmetrix

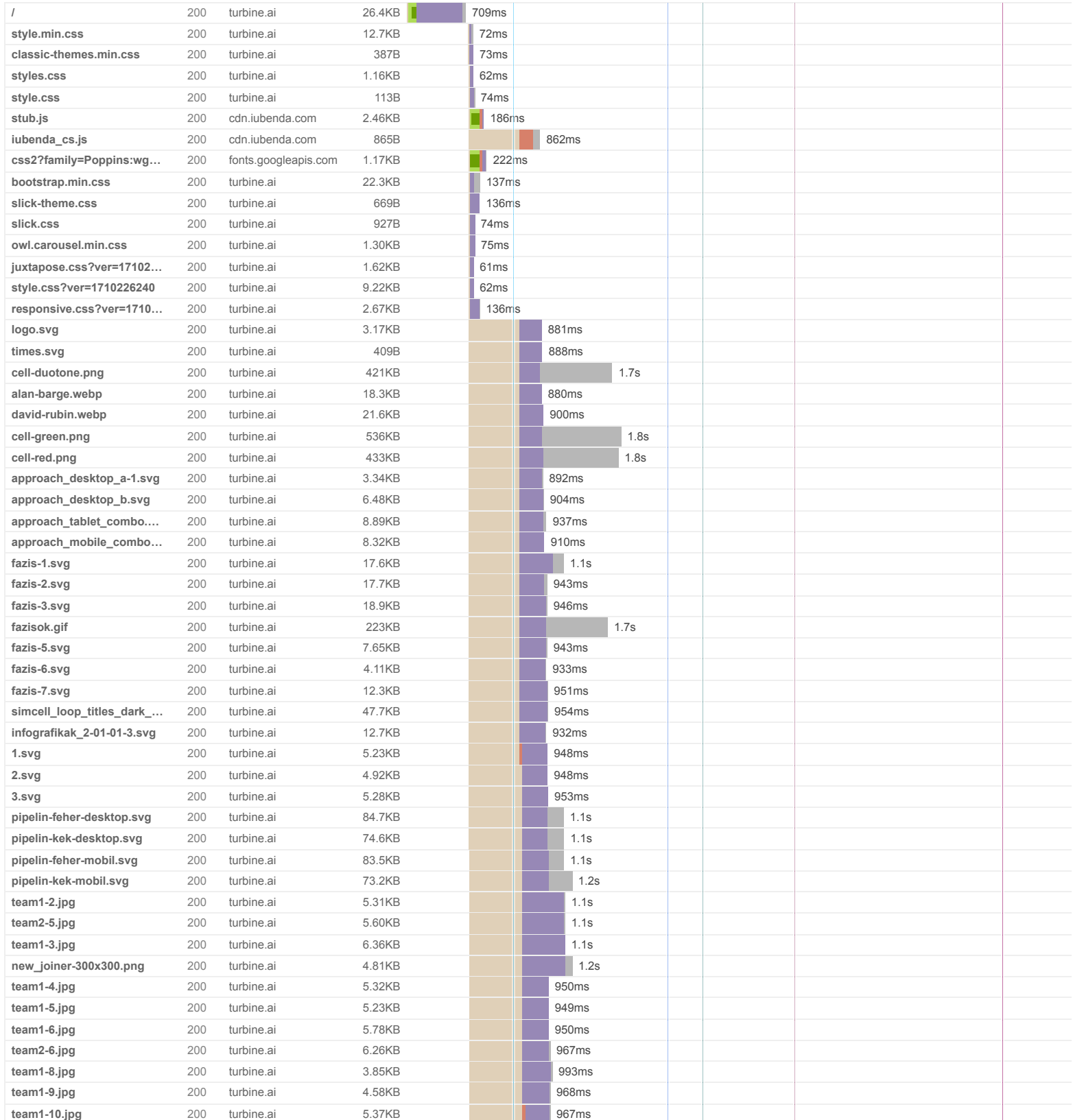


GTmetrix is developed by the good folks at **Carbon60**, a Canadian hosting company with over 28 years experience in web technology.

<https://carbon60.com/>

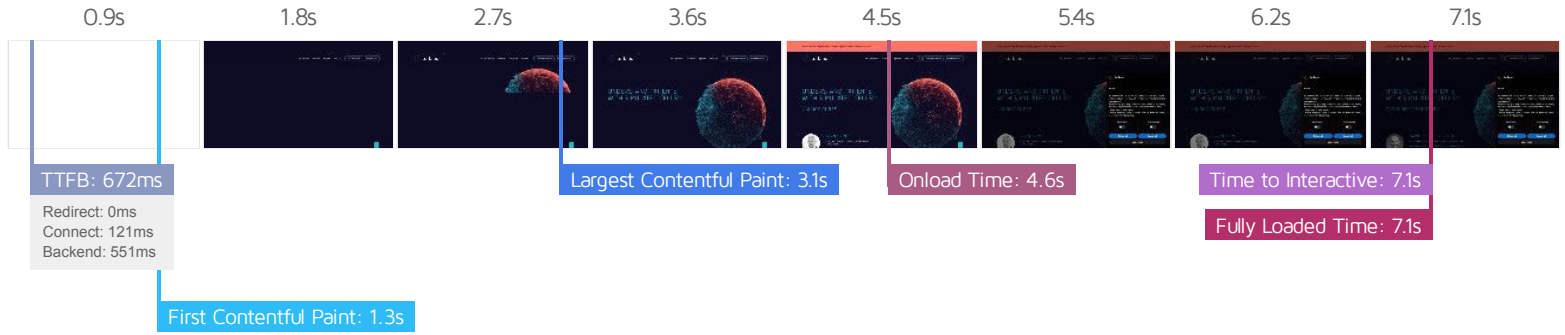
The waterfall chart displays the loading behaviour of your site in your selected browser. It can be used to discover simple issues such as 404's or more complex issues such as external resources blocking page rendering.

Unlock therapies with Simulated Cells™



team2-1.jpg	200	turbine.ai	5.60KB		968ms			
team2-2.jpg	200	turbine.ai	5.29KB		975ms			
team2-3.jpg	200	turbine.ai	4.30KB		983ms			
team5-8.jpg	200	turbine.ai	5.20KB		972ms			
team2-7.jpg	200	turbine.ai	5.14KB		988ms			
team2-8.jpg	200	turbine.ai	4.75KB		984ms			
team2-9.jpg	200	turbine.ai	5.51KB		987ms			
team3-1.jpg	200	turbine.ai	4.83KB		987ms			
team3-2.jpg	200	turbine.ai	4.67KB		984ms			
team3-3.jpg	200	turbine.ai	5.40KB		987ms			
team3-4.jpg	200	turbine.ai	5.27KB		993ms			
team3-5.jpg	200	turbine.ai	4.56KB		987ms			
team3-6.jpg	200	turbine.ai	4.74KB		1.1s			
team3-7.jpg	200	turbine.ai	5.12KB		993ms			
team3-8.jpg	200	turbine.ai	5.65KB		993ms			
team3-9.jpg	200	turbine.ai	5.45KB		1.1s			
team3-10.jpg	200	turbine.ai	4.81KB		1.1s			
team4-1.jpg	200	turbine.ai	6.01KB		1.1s			
team4-2.jpg	200	turbine.ai	4.41KB		1.1s			
team4-3.jpg	200	turbine.ai	5.38KB		1.1s			
team4-4.jpg	200	turbine.ai	5.54KB		1.1s			
team4-6.jpg	200	turbine.ai	6.16KB		1.1s			
team4-8.jpg	200	turbine.ai	5.60KB		1.1s			
team4-9.jpg	200	turbine.ai	5.31KB		1.1s			
270x270_profile_pic.jpg	200	turbine.ai	34.7KB		1.2s			
team5-1.jpg	200	turbine.ai	5.79KB		1.2s			
team5-2.jpg	200	turbine.ai	5.56KB		1.2s			
team5-3.jpg	200	turbine.ai	4.94KB		1.2s			
team5-4.jpg	200	turbine.ai	5.43KB		1.2s			
team5-5.jpg	200	turbine.ai	4.50KB		1.2s			
team5-6.jpg	200	turbine.ai	4.79KB		1.2s			
team5-7.jpg	200	turbine.ai	5.10KB		1.2s			
team5-9.jpg	200	turbine.ai	4.58KB		1.2s			
team5-10.jpg	200	turbine.ai	5.69KB		1.3s			
annatb.jpg	200	turbine.ai	17.8KB		1.6s			
balintf.jpg	200	turbine.ai	24.5KB		1.3s			
esztersz.jpg	200	turbine.ai	24.4KB		1.3s			
dorak-1.png	200	turbine.ai	32.6KB		1.3s			
szabolcsn.jpg	200	turbine.ai	26.3KB		1.3s			
danielv-1-200x200.jpg	200	turbine.ai	21.7KB		1.3s			
kristofsz.jpg	200	turbine.ai	26.2KB		1.4s			
amrikb.jpg	200	turbine.ai	18.0KB		1.4s			
stephenc.jpg	200	turbine.ai	15.8KB		1.3s			
larssw.png	200	turbine.ai	30.5KB		1.3s			
janer.png	200	turbine.ai	35.5KB		1.4s			
bernds.png	200	turbine.ai	30.4KB		1.4s			
milindk.png	200	turbine.ai	32.5KB		1.4s			
anveshr.png	200	turbine.ai	29.0KB		1.4s			
natalian.png	200	turbine.ai	19.9KB		1.4s			
danielat.jpg	200	turbine.ai	18.7KB		1.4s			
alanb.jpg	200	turbine.ai	18.3KB		1.4s			
gordon1.jpg	200	turbine.ai	22.1KB		1.4s			
klaush.jpg	200	turbine.ai	19.0KB		1.4s			
annalisaj.jpg	200	turbine.ai	19.4KB		1.6s			
mihribant.jpg	200	turbine.ai	19.9KB		1.4s			
daniell.jpg	200	turbine.ai	18.3KB		1.5s			
cell-light.webp	200	turbine.ai	244KB		1.7s			
ono-pharmaceutical-com...	200	turbine.ai	7.19KB		1.5s			
merck_ghif100x.png	200	turbine.ai	1.83KB		1.6s			
bayer.png	200	turbine.ai	6.91KB		1.5s			
ginkgo-logo-lockup-stack...	200	turbine.ai	2.79KB		1.6s			
mmv-logo-100.jpg	200	turbine.ai	5.68KB		1.6s			

mercia.png	200	turbine.ai	5.23KB			1.6s			
accel.png	200	turbine.ai	3.43KB			1.5s			
delin.png	200	turbine.ai	3.24KB			1.5s			
dayone.png	200	turbine.ai	4.02KB			1.6s			
johnson.png	200	turbine.ai	4.89KB			1.6s			
ozh.png	200	turbine.ai	2.97KB			1.5s			
txx.png	200	turbine.ai	3.17KB			1.5s			
footerlogo.svg	200	turbine.ai	3.16KB			1.6s			
iubenda_i_badge.js	200	cdn.iubenda.com	2.71KB		190ms				
jquery-3.6.0.min.js	200	turbine.ai	30.4KB			762ms			
bootstrap.min.js	200	turbine.ai	15.7KB			754ms			
slick.min.js	200	turbine.ai	10.4KB			759ms			
owl.carousel.min.js	200	turbine.ai	11.3KB			827ms			
scrollMenu.js	200	turbine.ai	682B			826ms			
juxtapose.js	200	turbine.ai	6.34KB			825ms			
scrollToTop.js	200	turbine.ai	380B			826ms			
popup-cookie.js	200	turbine.ai	470B			826ms			
index.js	200	turbine.ai	3.30KB			825ms			
index.js	200	turbine.ai	4.26KB			826ms			
wp-polyfill-inert.min.js	200	turbine.ai	2.59KB			826ms			
regenerator-runtime.min.js	200	turbine.ai	2.60KB			826ms			
wp-polyfill.min.js	200	turbine.ai	6.54KB			827ms			
email-protect.js	200	turbine.ai	500B			839ms			
api.js?render=6LcMkbQI...	200	google.com	1.16KB			895ms			
index.js	200	turbine.ai	650B			839ms			
iubenda_cons.js	200	cdn.iubenda.com	646B			822ms			
cons.js	200	turbine.ai	441B			839ms			
times-b.svg	200	turbine.ai	350B			1.3s			
arrow-black-left.svg	200	turbine.ai	339B			1.3s			
arrow-black-right.svg	200	turbine.ai	339B			1.3s			
arrow-down.svg	200	turbine.ai	412B			1.3s			
pxiEyp8kv8JHgFVrJJfecg...	200	fonts.gstatic.com	7.70KB			629ms			
Pharma-Regular.woff2	200	turbine.ai	14.1KB			1.3s			
core-en.js	200	cdn.iubenda.com	88.8KB			44ms			
barRed.svg	200	turbine.ai	467B			43ms			
recaptcha_en.js	200	gstatic.com	194KB			61ms			
core-8fdb29dc2a89f2172...	200	cdn.iubenda.com	6.60KB			22ms			
20166570.js	200	cs.iubenda.com	768B			38ms			
schema	200	turbine.ai	521B			634ms			
schema	200	turbine.ai	522B			658ms			
schema	200	turbine.ai	521B			1s			
anchor?ar=1&k=6LcMkb...	200	google.com	27.9KB			68ms			
styles_ltr.css	200	gstatic.com	24.0KB			47ms			
recaptcha_en.js	200	gstatic.com	194KB			83ms			
POST write?db=hits1	204	hits-i.iubenda.com	591B			87ms			
sLPlolr_9R2H1vFE63bCW...	200	google.com	6.77KB			13ms			
webworker.js?hl=en&v=Q...	200	google.com	135B			35ms			
cropped-favicon-32x32.png	200	turbine.ai	1.00KB			42ms			
POST reload?k=6LcMkbQ...	200	google.com	11.9KB			57ms			
164 Requests	3.91MB (7.25MB Uncompressed)	Fully Loaded 7.1s (Onload 4.6s)							



Performance Metrics

<p>First Contentful Paint</p> <p>How quickly content like text or images are painted onto your page. A good user experience is 0.9s or less.</p>	<p>Longer than recommended</p> <p>1.3s</p>	<p>Time to Interactive</p> <p>How long it takes for your page to become fully interactive. A good user experience is 2.5s or less.</p>	<p>Much longer than recommended</p> <p>7.1s</p>
<p>Speed Index</p> <p>How quickly the contents of your page are visibly populated. A good user experience is 1.3s or less.</p>	<p>Much longer than recommended</p> <p>4.5s</p>	<p>Total Blocking Time</p> <p>How much time is blocked by scripts during your page loading process. A good user experience is 150ms or less.</p>	<p>Much longer than recommended</p> <p>646ms</p>
<p>Largest Contentful Paint</p> <p>How long it takes for the largest element of content (e.g. a hero image) to be painted on your page. A good user experience is 1.2s or less.</p>	<p>Much longer than recommended</p> <p>3.1s</p>	<p>Cumulative Layout Shift</p> <p>How much your page's layout shifts as it loads. A good user experience is a score of 0.1 or less.</p>	<p>Good - Nothing to do here</p> <p>0.07</p>

Browser Timings

Redirect	0ms	Connect	121ms	Backend	551ms
TTFB	672ms	First Paint	1.3s	DOM Int.	3.5s
DOM Loaded	3.5s	Onload	4.6s	Fully Loaded	7.1s

IMPACT AUDIT

Med **Avoid an excessive DOM size** TBT 1,525 elements

A large DOM will increase memory usage, cause longer style calculations, and produce costly layout reflows.

STATISTIC	ELEMENT	VALUE
Total DOM Elements		1525
Maximum DOM Depth	div.block > div.description > p > br 	14
Maximum Child Elements	body.home > section.meetus-section > div.container > div.teamImage <div class="teamImage">	51

Low **Ensure text remains visible during webfont load** FCP LCP 1 font found

Leverage the `font-display` CSS feature to ensure text is user-visible while webfonts are loading.

URL	POTENTIAL SAVINGS
<ul style="list-style-type: none"> https://turbine.ai/wp-content/themes/turbine/css/font/Pharma-Regular.woff2 	932ms

Low **Use passive listeners to improve scrolling performance** 2 event listeners not passive

Consider marking your touch and wheel event listeners as `passive` to improve your page's scroll performance.

URL	LOCATION
<ul style="list-style-type: none"> https://turbine.ai/wp-content/themes/turbine/js/juxtapose.js https://turbine.ai/wp-content/themes/turbine/js/jquery-3.6.0.min.js 	Line:583 Line:1

Low **Reduce JavaScript execution time** TBT 1.3s spent executing JavaScript

Consider reducing the time spent parsing, compiling, and executing JS. You may find delivering smaller JS payloads helps with this.

URL	TOTAL CPU TIME	SCRIPT EVALUATION	SCRIPT PARSE
<ul style="list-style-type: none"> Unattributable 	1.6s	82ms	0ms
<ul style="list-style-type: none"> https://turbine.ai/ 	1.4s	17ms	7ms
<ul style="list-style-type: none"> https://turbine.ai/wp-content/themes/turbine/js/jquery-3.6.0.min.js 	648ms	343ms	15ms
<ul style="list-style-type: none"> https://www.gstatic.com/recaptcha/releases/QquE1_MNjnFHgZF4HPsEcf_2/recaptcha_en.js 	598ms	519ms	15ms
<ul style="list-style-type: none"> https://cdn.iubenda.com/cookie_solution/iubenda_cs/1.56.0/core-en.js 	202ms	152ms	39ms
<ul style="list-style-type: none"> https://cdn.iubenda.com/cs/gpp/stub.js 	150ms	148ms	1ms

Low **Avoid chaining critical requests** FCP LCP 32 chains found

The Critical Request Chains below show you what resources are loaded with a high priority. Consider reducing the length of chains, reducing the download size of resources, or deferring the download of unnecessary resources to improve page load.

Maximum critical path latency: **2.4s**

INITIAL NAVIGATION



Low

Avoid large layout shifts CLS

5 elements found

These DOM elements contribute most to the CLS of the page.

ELEMENT	CLS CONTRIBUTION
UNDERSTAND PATIENTS WITH SIMULATED CELLS™ UNLOCK CURES FIND THE BEST RESPONDE... <section class="hero-section" id="hero">	0.04
ALAN BARGE ex VP and Head of Oncology and Infection at AstraZeneca "Turbine can... <div class="slick-list draggable">	0.01
ALAN BARGE ex VP and Head of Oncology and Infection at AstraZeneca "Turbine can... <div class="item slick-slide" data-slick-index="0" aria-hidden="true" style="width: 568px; position: relative; left: 0px; top: 0px; z-index: 998;" tabindex="-1" role="tabpanel" id="slick-slide10" aria-describedby="slick-slide-control10">	0.01
UNLOCK CURES <div class="colorGreen subtitle slick-slide" data-slick-index="0" aria-hidden="true" style="width: 568px; position: relative; left: 0px; top: 0px; z-index: 998;" tabindex="0">	0.00
Our Approach Platform Pipeline Meet Us 1 Join our mission Read abou... <nav class="main-navigation">	0.00

Low

Use video formats for animated content LCP

Potential savings of 122KB

Large GIFs are inefficient for delivering animated content. Consider using MPEG4/WebM videos for animations and PNG/WebP for static images instead of GIF to save network bytes.

URL	RESOURCE SIZE	POTENTIAL SAVINGS
• https://turbine.ai/wp-content/uploads/2023/02/fazisok.gif	223KB	122KB

Low

Properly size images

Potential savings of 213KB

Serve images that are appropriately-sized to save cellular data and improve load time.

URL	RESOURCE SIZE	POTENTIAL SAVINGS
https://turbine.ai/wp-content/themes/turbine/images/cell-light.webp	244KB	133KB
https://turbine.ai/wp-content/uploads/2023/06/270x270_profile_pic.jpg	34.5KB	29.8KB
https://turbine.ai/wp-content/uploads/2023/02/david-rubin.webp	21.4KB	16.3KB
https://turbine.ai/wp-content/uploads/2023/02/alan-barge.webp	18.1KB	13.8KB
https://turbine.ai/wp-content/themes/turbine/images/cell-green.png	536KB	9.21KB
https://turbine.ai/wp-content/themes/turbine/images/cell-red.png	433KB	7.44KB
https://turbine.ai/wp-content/uploads/2023/04/new_joiner-300x300.png	4.66KB	4.14KB

Low

Efficiently encode images

Potential savings of 191KB

Optimized images load faster and consume less cellular data.

URL	RESOURCE SIZE	POTENTIAL SAVINGS
https://turbine.ai/wp-content/uploads/2023/06/270x270_profile_pic.jpg	34.5KB	15.9KB
https://turbine.ai/wp-content/uploads/2023/02/kristofsz.jpg	26.0KB	14.8KB
https://turbine.ai/wp-content/uploads/2023/02/szabolcsn.jpg	26.1KB	14.3KB
https://turbine.ai/wp-content/uploads/2023/02/danielv-1-200x200.jpg	21.6KB	13.5KB
https://turbine.ai/wp-content/uploads/2023/02/balintf.jpg	24.3KB	13.5KB
https://turbine.ai/wp-content/uploads/2023/02/esztersz.jpg	24.3KB	13.4KB
https://turbine.ai/wp-content/uploads/2023/02/gordon1.jpg	22.0KB	13.4KB
https://turbine.ai/wp-content/uploads/2023/02/annalisaj.jpg	19.3KB	11.1KB
https://turbine.ai/wp-content/uploads/2023/02/mihribant.jpg	19.7KB	10.8KB
https://turbine.ai/wp-content/uploads/2023/02/klaush.jpg	18.8KB	10.6KB
https://turbine.ai/wp-content/uploads/2023/02/alanb.jpg	18.2KB	10.5KB
https://turbine.ai/wp-content/uploads/2023/02/danielat.jpg	18.6KB	10.4KB
https://turbine.ai/wp-content/uploads/2023/02/daniell.jpg	18.2KB	10.1KB
https://turbine.ai/wp-content/uploads/2023/02/annatb.jpg	17.6KB	10.0KB
https://turbine.ai/wp-content/uploads/2023/02/amrikb.jpg	17.8KB	9.62KB
https://turbine.ai/wp-content/uploads/2023/02/stephenc.jpg	15.6KB	8.77KB

Low

Reduce unused CSS FCP LCP

Potential savings of 34.4KB

Reduce unused rules from stylesheets and defer CSS not used for above-the-fold content to decrease bytes consumed by network activity.

URL	TRANSFER SIZE	POTENTIAL SAVINGS
• https://turbine.ai/wp-content/themes/turbine/css/bootstrap.min.css	22.3KB	21.7KB
• https://turbine.ai/wp-includes/css/dist/block-library/style.min.css	12.7KB	12.7KB

Low

Serve images in next-gen formats

Potential savings of 1.60MB

Image formats like WebP and AVIF often provide better compression than PNG or JPEG, which means faster downloads and less data consumption.

URL	RESOURCE SIZE	POTENTIAL SAVINGS
https://turbine.ai/wp-content/themes/turbine/images/cell-green.png	536KB	449KB
https://turbine.ai/wp-content/themes/turbine/images/cell-red.png	433KB	377KB
https://turbine.ai/wp-content/themes/turbine/images/cell-duotone.png	421KB	361KB
https://turbine.ai/wp-content/uploads/2023/06/janer.png	35.3KB	31.1KB
https://turbine.ai/wp-content/uploads/2023/06/milindk.png	32.4KB	28.7KB
https://turbine.ai/wp-content/uploads/2023/06/dorak-1.png	32.4KB	27.3KB
https://turbine.ai/wp-content/uploads/2023/06/larssw.png	30.4KB	26.8KB
https://turbine.ai/wp-content/uploads/2023/06/bernds.png	30.2KB	26.5KB
https://turbine.ai/wp-content/uploads/2023/06/270x270_profile_pic.jpg	34.5KB	25.9KB
https://turbine.ai/wp-content/uploads/2023/06/anveshr.png	28.8KB	25.6KB
https://turbine.ai/wp-content/uploads/2023/02/kristofsz.jpg	26.0KB	20.8KB
https://turbine.ai/wp-content/uploads/2023/02/szabolcsn.jpg	26.1KB	20.6KB
https://turbine.ai/wp-content/uploads/2023/02/balintf.jpg	24.3KB	19.3KB
https://turbine.ai/wp-content/uploads/2023/02/esztersz.jpg	24.3KB	19.3KB
https://turbine.ai/wp-content/uploads/2023/02/gordon1.jpg	22.0KB	18.3KB
https://turbine.ai/wp-content/uploads/2023/02/danielv-1-200x200.jpg	21.6KB	17.9KB
https://turbine.ai/wp-content/uploads/2023/02/mihribant.jpg	19.7KB	15.8KB
https://turbine.ai/wp-content/uploads/2023/02/annalisaj.jpg	19.3KB	15.8KB
https://turbine.ai/wp-content/uploads/2023/02/klaush.jpg	18.8KB	15.3KB
https://turbine.ai/wp-content/uploads/2023/02/danielat.jpg	18.6KB	15.0KB
https://turbine.ai/wp-content/uploads/2023/02/alanb.jpg	18.2KB	14.8KB
https://turbine.ai/wp-content/uploads/2023/02/daniell.jpg	18.2KB	14.6KB
https://turbine.ai/wp-content/uploads/2023/06/natalian.png	19.7KB	14.6KB
https://turbine.ai/wp-content/uploads/2023/02/annatb.jpg	17.6KB	14.4KB
https://turbine.ai/wp-content/uploads/2023/02/amrikb.jpg	17.8KB	14.0KB
https://turbine.ai/wp-content/uploads/2023/02/stephenc.jpg	15.6KB	12.8KB

Low

Reduce initial server response time FCP LCP

Root document took 550ms

Keep the server response time for the main document short because all other requests depend on it.

URL	TIME SPENT
• https://turbine.ai/	550ms

Low

Defer offscreen images

Potential savings of 1.69MB

Consider lazy-loading offscreen and hidden images after all critical resources have finished loading to lower time to interactive.

URL	RESOURCE SIZE	POTENTIAL SAVINGS
https://turbine.ai/wp-content/themes/turbine/images/cell-light.webp	244KB	244KB
https://turbine.ai/wp-content/uploads/2023/02/fazisok.gif	223KB	223KB
https://turbine.ai/wp-content/uploads/2023/03/pipelin-feher-desktop.svg	84.7KB	84.7KB
https://turbine.ai/wp-content/uploads/2023/03/pipelin-feher-mobil.svg	83.5KB	83.5KB
https://turbine.ai/wp-content/uploads/2023/03/pipelin-kek-desktop.svg	74.6KB	74.6KB
https://turbine.ai/wp-content/uploads/2023/03/pipelin-kek-mobil.svg	73.2KB	73.2KB
https://turbine.ai/wp-content/uploads/2023/06/janer.png	35.3KB	35.3KB
https://turbine.ai/wp-content/uploads/2023/06/270x270_profile_pic.jpg	34.5KB	34.5KB
https://turbine.ai/wp-content/uploads/2023/06/dorak-1.png	32.4KB	32.4KB
https://turbine.ai/wp-content/uploads/2023/06/milindk.png	32.4KB	32.4KB
https://turbine.ai/wp-content/uploads/2023/06/larssw.png	30.4KB	30.4KB
https://turbine.ai/wp-content/uploads/2023/06/bernds.png	30.2KB	30.2KB
https://turbine.ai/wp-content/uploads/2023/06/anveshr.png	28.8KB	28.8KB
https://turbine.ai/wp-content/uploads/2023/02/szabolcsn.jpg	26.1KB	26.1KB
https://turbine.ai/wp-content/uploads/2023/02/kristofsz.jpg	26.0KB	26.0KB
https://turbine.ai/wp-content/uploads/2023/02/balintf.jpg	24.3KB	24.3KB
https://turbine.ai/wp-content/uploads/2023/02/esztersz.jpg	24.3KB	24.3KB
https://turbine.ai/wp-content/uploads/2023/02/gordon1.jpg	22.0KB	22.0KB
https://turbine.ai/wp-content/uploads/2023/02/danielv-1-200x200.jpg	21.6KB	21.6KB
https://turbine.ai/wp-content/uploads/2023/06/natalian.png	19.7KB	19.7KB
https://turbine.ai/wp-content/uploads/2023/02/mihribant.jpg	19.7KB	19.7KB
https://turbine.ai/wp-content/uploads/2023/02/annalisaj.jpg	19.3KB	19.3KB
https://turbine.ai/wp-content/uploads/2023/03/fazis-3.svg	18.9KB	18.9KB
https://turbine.ai/wp-content/uploads/2023/02/klaush.jpg	18.8KB	18.8KB
https://turbine.ai/wp-content/uploads/2023/02/danielat.jpg	18.6KB	18.6KB
https://turbine.ai/wp-content/uploads/2023/02/alanb.jpg	18.2KB	18.2KB
https://turbine.ai/wp-content/uploads/2023/02/daniell.jpg	18.2KB	18.2KB
https://turbine.ai/wp-content/uploads/2023/02/amrikb.jpg	17.8KB	17.8KB
https://turbine.ai/wp-content/uploads/2023/03/fazis-2.svg	17.7KB	17.7KB
https://turbine.ai/wp-content/uploads/2023/02/annatb.jpg	17.6KB	17.6KB
https://turbine.ai/wp-content/uploads/2023/03/fazis-1.svg	17.6KB	17.6KB
https://turbine.ai/wp-content/uploads/2023/02/stephenc.jpg	15.6KB	15.6KB
https://turbine.ai/wp-content/uploads/2023/02/infografikak_2-01-01-3.svg	12.7KB	12.7KB
https://turbine.ai/wp-content/uploads/2023/03/fazis-7.svg	12.3KB	12.3KB
https://turbine.ai/wp-content/uploads/2023/03/approach_tablet_combo.svg	8.89KB	8.89KB
https://turbine.ai/wp-content/uploads/2023/02/approach_mobile_combo.svg	8.32KB	8.32KB
https://turbine.ai/wp-content/uploads/2023/03/fazis-5.svg	7.65KB	7.65KB
https://turbine.ai/wp-content/uploads/2023/11/ono-pharmaceutical-company-copy.png	7.04KB	7.04KB
https://turbine.ai/wp-content/uploads/2023/02/bayer.png	6.76KB	6.76KB
https://turbine.ai/wp-content/uploads/2023/02/team1-3.jpg	6.21KB	6.21KB
https://turbine.ai/wp-content/uploads/2023/02/team2-6.jpg	6.11KB	6.11KB
https://turbine.ai/wp-content/uploads/2023/02/team4-6.jpg	6.00KB	6.00KB
https://turbine.ai/wp-content/uploads/2023/02/team4-1.jpg	5.86KB	5.86KB
https://turbine.ai/wp-content/uploads/2023/02/team5-1.jpg	5.64KB	5.64KB
https://turbine.ai/wp-content/uploads/2023/02/team1-6.jpg	5.62KB	5.62KB

URL	RESOURCE SIZE	POTENTIAL SAVINGS
https://turbine.ai/wp-content/uploads/2023/02/team5-10.jpg	5.53KB	5.53KB
https://turbine.ai/wp-content/uploads/2023/06/mmv-logo-100.jpg	5.53KB	5.53KB
https://turbine.ai/wp-content/uploads/2023/02/team3-8.jpg	5.50KB	5.50KB
https://turbine.ai/wp-content/uploads/2023/02/team2-1.jpg	5.45KB	5.45KB
https://turbine.ai/wp-content/uploads/2023/02/team2-5.jpg	5.44KB	5.44KB
https://turbine.ai/wp-content/uploads/2023/02/team4-8.jpg	5.44KB	5.44KB
https://turbine.ai/wp-content/uploads/2023/02/team5-2.jpg	5.41KB	5.41KB
https://turbine.ai/wp-content/uploads/2023/02/team4-4.jpg	5.39KB	5.39KB
https://turbine.ai/wp-content/uploads/2023/02/team2-9.jpg	5.36KB	5.36KB
https://turbine.ai/wp-content/uploads/2023/02/team3-9.jpg	5.29KB	5.29KB
https://turbine.ai/wp-content/themes/turbine/images/3.svg	5.28KB	5.28KB
https://turbine.ai/wp-content/uploads/2023/02/team5-4.jpg	5.28KB	5.28KB
https://turbine.ai/wp-content/uploads/2023/02/team3-3.jpg	5.25KB	5.25KB
https://turbine.ai/wp-content/themes/turbine/images/1.svg	5.23KB	5.23KB
https://turbine.ai/wp-content/uploads/2023/02/team4-3.jpg	5.23KB	5.23KB
https://turbine.ai/wp-content/uploads/2023/02/team1-10.jpg	5.21KB	5.21KB
https://turbine.ai/wp-content/uploads/2023/02/team1-4.jpg	5.17KB	5.17KB
https://turbine.ai/wp-content/uploads/2023/02/team4-9.jpg	5.16KB	5.16KB
https://turbine.ai/wp-content/uploads/2023/02/team1-2.jpg	5.16KB	5.16KB
https://turbine.ai/wp-content/uploads/2023/02/team2-2.jpg	5.14KB	5.14KB
https://turbine.ai/wp-content/uploads/2023/02/team3-4.jpg	5.12KB	5.12KB
https://turbine.ai/wp-content/uploads/2023/02/team1-5.jpg	5.08KB	5.08KB
https://turbine.ai/wp-content/uploads/2023/02/mercia.png	5.08KB	5.08KB
https://turbine.ai/wp-content/uploads/2023/02/team5-8.jpg	5.05KB	5.05KB
https://turbine.ai/wp-content/uploads/2023/02/team2-7.jpg	4.99KB	4.99KB
https://turbine.ai/wp-content/uploads/2023/02/team3-7.jpg	4.97KB	4.97KB
https://turbine.ai/wp-content/uploads/2023/02/team5-7.jpg	4.95KB	4.95KB
https://turbine.ai/wp-content/themes/turbine/images/2.svg	4.92KB	4.92KB
https://turbine.ai/wp-content/uploads/2023/02/team5-3.jpg	4.79KB	4.79KB
https://turbine.ai/wp-content/uploads/2023/02/johnson.png	4.74KB	4.74KB
https://turbine.ai/wp-content/uploads/2023/02/team3-1.jpg	4.68KB	4.68KB
https://turbine.ai/wp-content/uploads/2023/02/team3-10.jpg	4.66KB	4.66KB
https://turbine.ai/wp-content/uploads/2023/04/new_joiner-300x300.png	4.66KB	4.66KB
https://turbine.ai/wp-content/uploads/2023/02/team5-6.jpg	4.64KB	4.64KB
https://turbine.ai/wp-content/uploads/2023/02/team2-8.jpg	4.60KB	4.60KB
https://turbine.ai/wp-content/uploads/2023/02/team3-6.jpg	4.59KB	4.59KB
https://turbine.ai/wp-content/uploads/2023/02/team3-2.jpg	4.52KB	4.52KB
https://turbine.ai/wp-content/uploads/2023/02/team5-9.jpg	4.43KB	4.43KB
https://turbine.ai/wp-content/uploads/2023/02/team1-9.jpg	4.43KB	4.43KB
https://turbine.ai/wp-content/uploads/2023/02/team3-5.jpg	4.41KB	4.41KB
https://turbine.ai/wp-content/uploads/2023/02/team5-5.jpg	4.35KB	4.35KB
https://turbine.ai/wp-content/uploads/2023/02/team4-2.jpg	4.26KB	4.26KB
https://turbine.ai/wp-content/uploads/2023/02/team2-3.jpg	4.14KB	4.14KB
https://turbine.ai/wp-content/uploads/2023/03/fazis-6.svg	4.11KB	4.11KB
https://turbine.ai/wp-content/uploads/2023/02/dayone.png	3.87KB	3.87KB

URL	RESOURCE SIZE	POTENTIAL SAVINGS
https://turbine.ai/wp-content/uploads/2023/02/team1-8.jpg	3.70KB	3.70KB
https://turbine.ai/wp-content/uploads/2023/02/accel.png	3.28KB	3.28KB
https://turbine.ai/wp-content/themes/turbine/images/footerlogo.svg	3.16KB	3.16KB
https://turbine.ai/wp-content/uploads/2023/02/delin.png	3.09KB	3.09KB
https://turbine.ai/wp-content/uploads/2023/02/xtx.png	3.02KB	3.02KB
https://turbine.ai/wp-content/uploads/2023/02/ozh.png	2.82KB	2.82KB
https://turbine.ai/wp-content/uploads/2024/02/ginkgo-logo-lockup-stacked-horizontal-green_100w-1.png	2.64KB	2.64KB

Low

Avoid non-composited animations CLS

22 animated elements found

Animations which are not composited can be janky and increase CLS.

ELEMENT

NAME

ANNA TÖRÖK-BÖRÖCZ

```
<a href="https://www.linkedin.com/in/boroczanna/" target="_blank" tabindex="-1">
```

Unsupported CSS Property: visibility

visibility

ANNA TÖRÖK-BÖRÖCZ

```
<a href="https://www.linkedin.com/in/boroczanna/" target="_blank" tabindex="0">
```

Unsupported CSS Property: visibility

visibility

```
div.slick-list > div.slick-track > div#slick-slide01 > a
```

```
<a href="https://www.linkedin.com/in/balintfarkas/" target="_blank" tabindex="0">
```

Unsupported CSS Property: visibility

visibility

```
div.slick-list > div.slick-track > div.col-lg-4 > a
```

```
<a href="https://www.linkedin.com/in/balintfarkas/" target="_blank" tabindex="-1">
```

Unsupported CSS Property: visibility

visibility

BÁLINT FARKAS

```
<a href="https://www.linkedin.com/in/balintfarkas/" target="_blank" tabindex="-1">
```

Unsupported CSS Property: visibility

visibility

ESZTER SZARKA PhD

```
<a href="https://www.linkedin.com/in/eszter-szarka-phd-658a2031/" target="_blank" tabindex="0">
```

Unsupported CSS Property: visibility

visibility

BÁLINT FARKAS

```
<a href="https://www.linkedin.com/in/balintfarkas/" target="_blank" tabindex="0">
```

Unsupported CSS Property: visibility

visibility

ESZTER SZARKA PhD

```
<a href="https://www.linkedin.com/in/eszter-szarka-phd-658a2031/" target="_blank" tabindex="-1">
```

Unsupported CSS Property: visibility

visibility

```
div.slick-list > div.slick-track > div.col-lg-4 > a
```

```
<a href="https://www.linkedin.com/in/balintfarkas/" target="_blank" tabindex="-1">
```

Unsupported CSS Property: visibility

visibility

```
div.slick-list > div.slick-track > div#slick-slide03 > a
```

```
<a href="https://www.linkedin.com/in/k%C3%A1llai-d%C3%B3ri-93061a7a/" target="_blank" tabindex="-1">
```

Unsupported CSS Property: visibility

visibility

```
div.slick-list > div.slick-track > div#slick-slide02 > a
```

```
<a href="https://www.linkedin.com/in/eszter-szarka-phd-658a2031/" target="_blank" tabindex="0">
```

Unsupported CSS Property: visibility

visibility

```
div.slick-list > div.slick-track > div.col-lg-4 > a
```

```
<a href="https://www.linkedin.com/in/eszter-szarka-phd-658a2031/" target="_blank" tabindex="-1">
```

Unsupported CSS Property: visibility

visibility

BÁLINT FARKAS

```
<a href="https://www.linkedin.com/in/balintfarkas/" target="_blank" tabindex="-1">
```

Unsupported CSS Property: visibility

visibility

```
div.slick-list > div.slick-track > div.col-lg-4 > a
```

```
<a href="https://www.linkedin.com/in/k%C3%A1llai-d%C3%B3ri-93061a7a/" target="_blank" tabindex="-1">
```

Unsupported CSS Property: visibility

visibility

DÓRA KÁLLAI

```
<a href="https://www.linkedin.com/in/k%C3%A1llai-d%C3%B3ri-93061a7a/" target="_blank" tabindex="-1">
```

Unsupported CSS Property: visibility

visibility

```
div.slick-list > div.slick-track > div.col-lg-4 > a
```

```
<a href="https://www.linkedin.com/in/k%C3%A1llai-d%C3%B3ri-93061a7a/" target="_blank" tabindex="-1">
```

Unsupported CSS Property: visibility

visibility

DÓRA KÁLLAI

```
<a href="https://www.linkedin.com/in/k%C3%A1llai-d%C3%B3ri-93061a7a/" target="_blank" tabindex="-1">
```

Unsupported CSS Property: visibility

visibility

```
div.slick-list > div.slick-track > div#slick-slide00 > a
```

```
<a href="https://www.linkedin.com/in/boroczanna/" target="_blank" tabindex="0">
```

ELEMENT	NAME
Unsupported CSS Property: visibility	visibility
div.slick-list > div.slick-track > div.col-lg-4 > a	
<code></code>	
Unsupported CSS Property: visibility	visibility
div.slick-list > div.slick-track > div.col-lg-4 > a	
<code></code>	
Unsupported CSS Property: visibility	visibility
ESZTER SZARKA PhD	
<code></code>	
Unsupported CSS Property: visibility	visibility
DÓRA KÁLLAI	
<code></code>	
Unsupported CSS Property: visibility	visibility

Low **Minify JavaScript** FCP LCP Potential savings of 2.48KB

Minifying JavaScript files can reduce payload sizes and script parse time.

URL	TRANSFER SIZE	POTENTIAL SAVINGS
• https://turbine.ai/wp-content/themes/turbine/js/juxtapose.js	6.34KB	2.48KB

Low **Reduce unused JavaScript** LCP Potential savings of 134KB

Reduce unused JavaScript and defer loading scripts until they are required to decrease bytes consumed by network activity.

URL	TRANSFER SIZE	POTENTIAL SAVINGS
https://www.gstatic.com/recaptcha/releases/QquE1_MNjnFHgZF4HPsEcf_2/recaptcha_en.js	195KB	99KB
https://cdn.iubenda.com/cookie_solution/iubenda_cs/1.56.0/core-en.js	88.8KB	35.6KB

N/A **Largest Contentful Paint element** LCP 3,120 ms

This is the largest contentful element painted within the viewport.

ELEMENT	PHASE	% OF LCP	TIMING
div.col-xl-6 > div.cellContainer > div.cell > img			
<code></code>			
	TTFB	22%	672ms
	Load Delay	11%	337ms
	Load Time	47%	1.5s
	Render Delay	21%	648ms

N/A **Eliminate render-blocking resources** FCP LCP Potential savings of 21ms

Resources are blocking the first paint of your page. Consider delivering critical JS/CSS inline and deferring all non-critical JS/styles.

Resources that **may** be contributing to render-blocking include:

URL	TRANSFER SIZE	DOWNLOAD TIME
• https://fonts.googleapis.com/css2?family=Poppins:wght@100;200;300;400&family=Nunito:wght@600&display=swap	1.17KB	797ms
• https://turbine.ai/wp-content/themes/turbine/css/bootstrap_min.css	22.3KB	300ms
• https://turbine.ai/wp-content/themes/turbine/css/style.css?ver=1710226240	9.22KB	150ms
• https://cdn.iubenda.com/cs/gpp/stub.js	2.46KB	801ms

N/A **Avoid serving legacy JavaScript to modern browsers** TBT Potential savings of 157B

Polyfills and transforms enable legacy browsers to use new JavaScript features. However, many aren't necessary for modern browsers. For your bundled JavaScript, adopt a modern script deployment strategy using module/nomodule feature detection to reduce the amount of code shipped to modern browsers, while retaining support for legacy browsers.

URL	POTENTIAL SAVINGS
https://cdn.iubenda.com/cs/gpp/stub.js Line:0 Column:1057	72B
https://turbine.ai/wp-includes/js/dist/vendor/wp-polyfill-inert.min.js Line:0 Column:452	54B
https://cdn.iubenda.com/cookie_solution/iubenda_cs/1.56.0/core-en.js Line:0 Column:887	31B

N/A **Minimize main-thread work** TBT Main-thread busy for 4.7s

Consider reducing the time spent parsing, compiling and executing JS. You may find delivering smaller JS payloads helps with this.

CATEGORY	TIME SPENT
Other	2.0s
Script Evaluation	1.4s
Style & Layout	1.0s
Rendering	132ms
Parse HTML & CSS	104ms
Script Parsing & Compilation	95ms
Garbage Collection	38ms

N/A **Reduce the impact of third-party code** TBT Third-party code blocked the main thread for 96ms

Third-party code can significantly impact load performance. Limit the number of redundant third-party providers and try to load third-party code after your page has primarily finished loading.

THIRD-PARTY	TRANSFER SIZE	MAIN-THREAD BLOCKING TIME
IUBENDA	103KB	49ms
• https://cdn.iubenda.com/cookie_solution/iubenda_cs/1.56.0/core-en.js	88.8KB	49ms
• https://cdn.iubenda.com/cons/iubenda_cons/core-8fdb29dc2a89f2172df78c5f7cb048f.js	6.60KB	0ms
• Other resources	7.98KB	0ms
GOOGLE CDN	414KB	46ms
• https://www.gstatic.com/recaptcha/releases/QquE1_MNjnFHgZF4HPsEcf_2/recaptcha_en.js	390KB	46ms
• https://www.gstatic.com/recaptcha/releases/QquE1_MNjnFHgZF4HPsEcf_2/styles_ltr.css	24.6KB	0ms
OTHER GOOGLE APIS/SDKS	48.3KB	0ms
• https://www.google.com/recaptcha/api2/anchor?ar=1&k=6LcMkbQIAAAANF56XYvBFAYT8TZsNVPvw_WtnvA&co=aHR0cHM6Ly90dXJiaW5lcmFpOjQ0Mw..&hl=en&v=QquE1_MNjnFHgZF4HPsEcf_2&size=invisible&cb=jz560bazv61n	27.9KB	0ms
• https://www.google.com/recaptcha/api2/reload?k=6LcMkbQIAAAANF56XYvBFAYT8TZsNVPvw_WtnvA	11.9KB	0ms
• https://www.google.com/js/bg/sLPloIr_9R2H1vFE63bCW9_RmUPMblK-XyKwDAco0G4.js	7.18KB	0ms
GOOGLE FONTS	9.39KB	0ms
• https://fonts.gstatic.com/s/poppins/v20/pxiEyp8kv8JHqFVrJfJfecg.woff2	8.22KB	0ms

N/A

User Timing marks and measures

No user timings and/or marks found.