

Performance Report for: <https://glyconics.com/>

Report generated: Tue, Mar 12, 2024 10:40 PM -0700
 Test Server Location: London, UK
 Using: Chrome 117.0.0.0, Lighthouse 11.0.0

A	Performance	Structure	L. Contentful Paint	T. Blocking Time	C. Layout Shift
	100%	98%	365ms	0ms	0.01

Top Issues

Med	Serve static assets with an efficient cache policy	Potential savings of 657KB
Low	Eliminate render-blocking resources <small>FCP LCP</small>	Potential savings of 26ms
Low	Avoid an excessive DOM size <small>TBT</small>	320 elements
Low	Enable text compression <small>FCP LCP</small>	Potential savings of 29.4KB
Low	Avoid enormous network payloads <small>LCP</small>	Total size was 1.24MB

Page Details



Total Page Size - 1.23MB



Total Page Requests - 54



■ HTML
 ■ JS
 ■ CSS
 ■ IMG
 ■ Video
 ■ Font
 ■ Other

How does this affect me?

Today's web user expects a fast and seamless website experience. Delivering that fast experience can result in increased visits, conversions and overall happiness.

As if you didn't need more incentive, **Google has announced that they are using page speed in their ranking algorithm.**

About GTmetrix

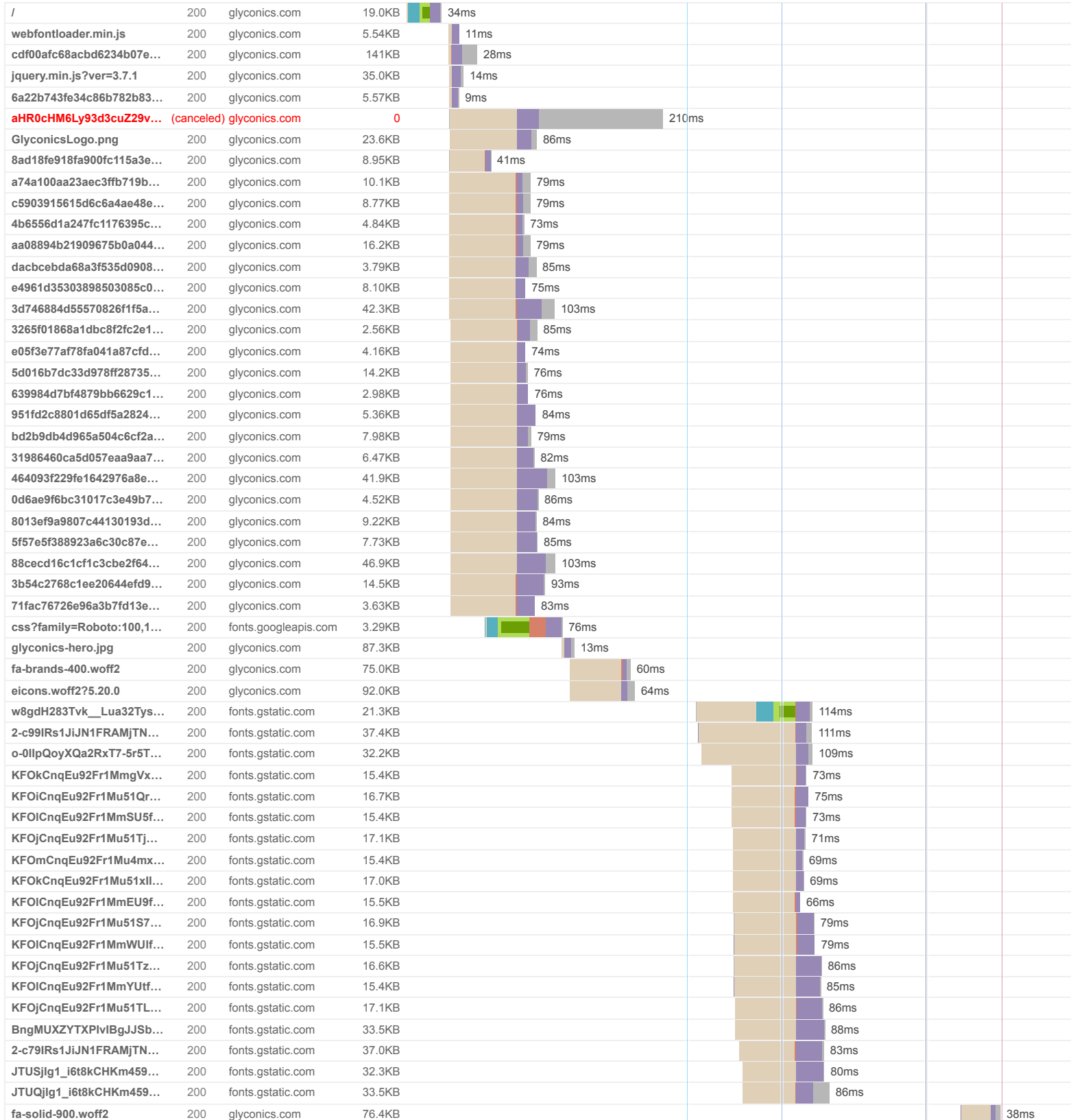


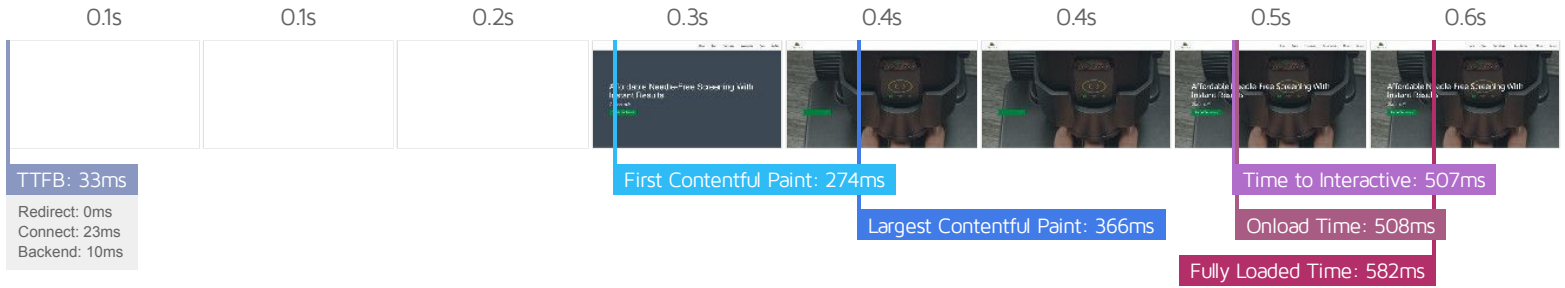
GTmetrix is developed by the good folks at **Carbon60**, a Canadian hosting company with over 28 years experience in web technology.

<https://carbon60.com/>

The waterfall chart displays the loading behaviour of your site in your selected browser. It can be used to discover simple issues such as 404's or more complex issues such as external resources blocking page rendering.

Shaping The Future of Medical Diagnostics - Glyconics





Performance Metrics

<p>First Contentful Paint</p> <p>How quickly content like text or images are painted onto your page. A good user experience is 0.9s or less.</p>	<p>Good - Nothing to do here</p> <p>274ms</p>	<p>Time to Interactive</p> <p>How long it takes for your page to become fully interactive. A good user experience is 2.5s or less.</p>	<p>Good - Nothing to do here</p> <p>507ms</p>
<p>Speed Index</p> <p>How quickly the contents of your page are visibly populated. A good user experience is 1.3s or less.</p>	<p>Good - Nothing to do here</p> <p>353ms</p>	<p>Total Blocking Time</p> <p>How much time is blocked by scripts during your page loading process. A good user experience is 150ms or less.</p>	<p>Good - Nothing to do here</p> <p>0ms</p>
<p>Largest Contentful Paint</p> <p>How long it takes for the largest element of content (e.g. a hero image) to be painted on your page. A good user experience is 1.2s or less.</p>	<p>Good - Nothing to do here</p> <p>365ms</p>	<p>Cumulative Layout Shift</p> <p>How much your page's layout shifts as it loads. A good user experience is a score of 0.1 or less.</p>	<p>Good - Nothing to do here</p> <p>0.01</p>

Browser Timings

Redirect	0ms	Connect	23ms	Backend	10ms
TTFB	33ms	First Paint	274ms	DOM Int.	506ms
DOM Loaded	507ms	Onload	508ms	Fully Loaded	582ms

IMPACT AUDIT

Low Properly size images Potential savings of 23.1KB

Serve images that are appropriately-sized to save cellular data and improve load time.

URL	RESOURCE SIZE	POTENTIAL SAVINGS
https://glyconics.com/wp-content/uploads/2020/09/GlyconicsLogo.png	23.6KB	23.1KB

Low Ensure text remains visible during webfont load FCP LCP 20 fonts found

Leverage the `font-display` CSS feature to ensure text is user-visible while webfonts are loading.

URL	POTENTIAL SAVINGS
https://glyconics.com/wp-content/plugins/elementor/assets/lib/eicons/fonts/eicons.woff2?5.20.0	13ms
https://fonts.gstatic.com/s/varelaround/v20/w8gdH283Tvk_Lua32Tysjfp8uP.woff2	55ms
https://fonts.gstatic.com/s/merriweathersans/v26/2-c99IRs1JiJN1FRAMjTN5zd9vgsFHX1QjU.woff2	55ms
https://fonts.gstatic.com/s/catamaran/v19/o-0llpQoyXQa2RxT7-5r5TRA.woff2	55ms
https://fonts.gstatic.com/s/roboto/v30/KFOkCngEu92Fr1MmgVxllzl.woff2	20ms
https://fonts.gstatic.com/s/roboto/v30/KFOlCngEu92Fr1Mu51QrEzAdLw.woff2	22ms
https://fonts.gstatic.com/s/roboto/v30/KFOlCngEu92Fr1MmSU5fBBc4.woff2	20ms
https://fonts.gstatic.com/s/roboto/v30/KFOjCngEu92Fr1Mu51TjASc6CsQ.woff2	18ms
https://fonts.gstatic.com/s/roboto/v30/KFOmCngEu92Fr1Mu4mxK.woff2	16ms
https://fonts.gstatic.com/s/roboto/v30/KFOkCngEu92Fr1Mu51xllzl.woff2	17ms
https://fonts.gstatic.com/s/roboto/v30/KFOlCngEu92Fr1MmEU9fBBc4.woff2	13ms
https://fonts.gstatic.com/s/roboto/v30/KFOjCngEu92Fr1Mu51S7ACc6CsQ.woff2	26ms
https://fonts.gstatic.com/s/roboto/v30/KFOlCngEu92Fr1MmWUlfBBc4.woff2	27ms
https://fonts.gstatic.com/s/roboto/v30/KFOjCngEu92Fr1Mu51TzBic6CsQ.woff2	33ms
https://fonts.gstatic.com/s/roboto/v30/KFOlCngEu92Fr1MmYUlfBBc4.woff2	32ms
https://fonts.gstatic.com/s/roboto/v30/KFOjCngEu92Fr1Mu51TLBCc6CsQ.woff2	33ms
https://fonts.gstatic.com/s/robotoslab/v34/BngMUXZYTXPlvIBgJJSb6ufN5qU.woff2	35ms
https://fonts.gstatic.com/s/merriweathersans/v26/2-c79IRs1JiJN1FRAMjTN5zd9vgsFHXwcj9w.woff2	35ms
https://fonts.gstatic.com/s/montserrat/v26/JTUSjlg1_i6t8kCHKm459Wlhyw.woff2	35ms
https://fonts.gstatic.com/s/montserrat/v26/JTUQjlg1_i6t8kCHKm459WxRyS7m.woff2	40ms

Low Avoid long main-thread tasks TBT 1 long task found

Lists the longest tasks on the main thread, useful for identifying worst contributors to input delay.

URL	START TIME	DURATION
https://glyconics.com/	151ms	51ms

Low Reduce unused CSS FCP LCP Potential savings of 135KB

Reduce unused rules from stylesheets and defer CSS not used for above-the-fold content to decrease bytes consumed by network activity.

URL	TRANSFER SIZE	POTENTIAL SAVINGS
• https://glyconics.com/wp-content/litespeed/css/cdf00afc68acbd6234b07eed51320dd1.css?ver=45102	141KB	135KB

Low **Serve images in next-gen formats** Potential savings of 17.0KB

Image formats like WebP and AVIF often provide better compression than PNG or JPEG, which means faster downloads and less data consumption.

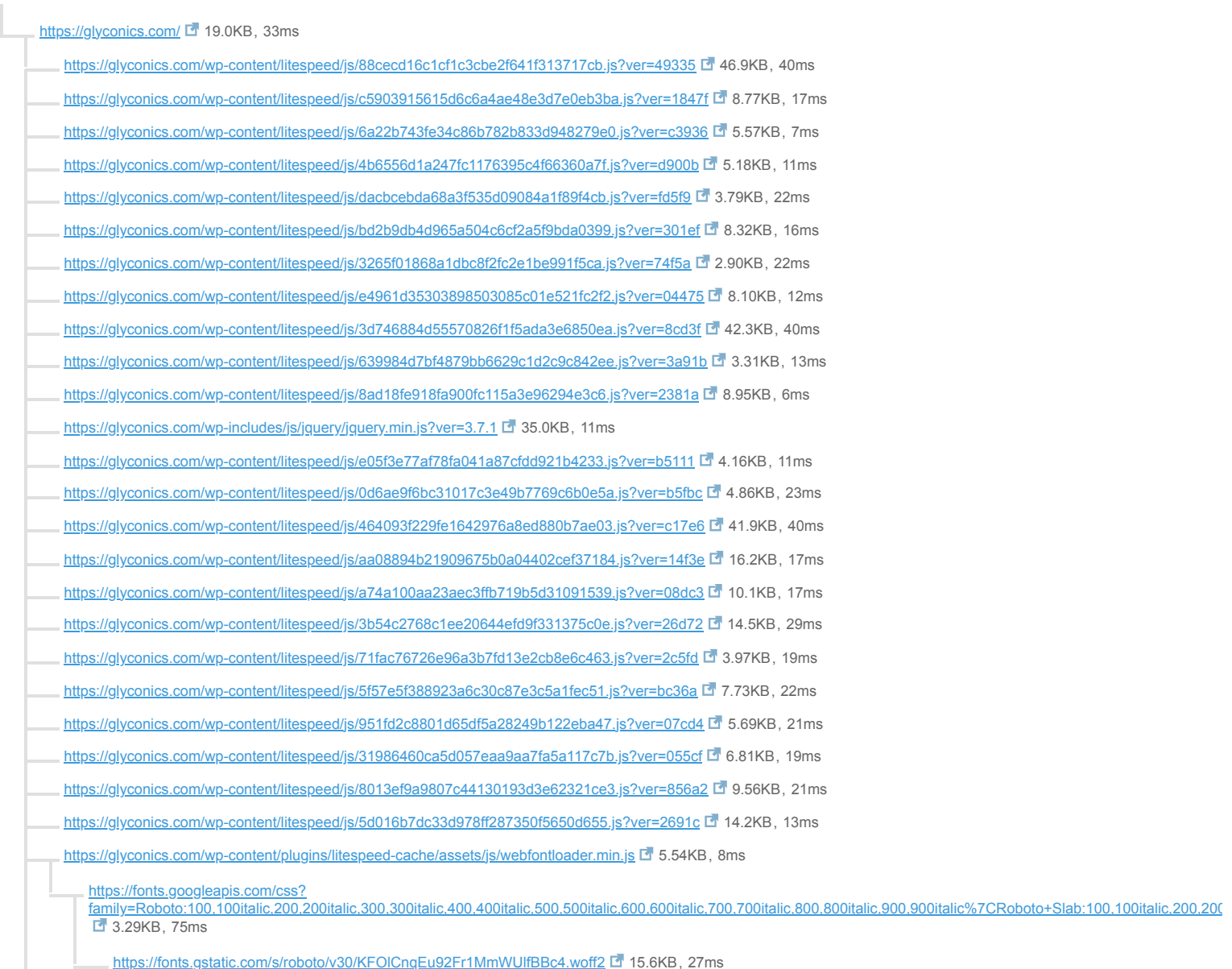
URL	RESOURCE SIZE	POTENTIAL SAVINGS
https://glyconics.com/wp-content/uploads/2024/03/glyconics-hero.jpg	87.3KB	17.0KB

Low **Avoid chaining critical requests** FCP LCP 46 chains found

The Critical Request Chains below show you what resources are loaded with a high priority. Consider reducing the length of chains, reducing the download size of resources, or deferring the download of unnecessary resources to improve page load.

Maximum critical path latency: **580ms**

INITIAL NAVIGATION



- <https://fonts.gstatic.com/s/roboto/v30/KFOICnqEu92Fr1MmYUfBBc4.woff2> 15.5KB, 32ms
- <https://fonts.gstatic.com/s/robotoslab/v34/BngMUXZYTXPlvIBgJJSb6ufn5qU.woff2> 33.7KB, 35ms
- <https://fonts.gstatic.com/s/merriweathersans/v26/2-c99IRs1JiJN1FRAMjTN5zd9vgsFHX1QjU.woff2> 37.5KB, 55ms
- <https://fonts.gstatic.com/s/roboto/v30/KFOICnqEu92Fr1Mu51QrEzAdLw.woff2> 16.8KB, 22ms
- <https://fonts.gstatic.com/s/roboto/v30/KFOkCnqEu92Fr1MmqVxllzl.woff2> 15.5KB, 20ms
- https://fonts.gstatic.com/s/montserrat/v26/JTUSjlg1_i6t8kCHKm459Wlhyw.woff2 32.5KB, 35ms
- <https://fonts.gstatic.com/s/roboto/v30/KFOmCnqEu92Fr1Mu4mxK.woff2> 15.5KB, 16ms
- <https://fonts.gstatic.com/s/roboto/v30/KFOkCnqEu92Fr1Mu51xllzl.woff2> 17.1KB, 17ms
- <https://fonts.gstatic.com/s/roboto/v30/KFOICnqEu92Fr1MmEU9fBBc4.woff2> 16.1KB, 13ms
- <https://fonts.gstatic.com/s/roboto/v30/KFOjCnqEu92Fr1Mu51S7ACc6CsQ.woff2> 17.0KB, 26ms
- <https://fonts.gstatic.com/s/merriweathersans/v26/2-c79IRs1JiJN1FRAMjTN5zd9vgsFHXwcj9w.woff2> 37.1KB, 35ms
- <https://fonts.gstatic.com/s/roboto/v30/KFOjCnqEu92Fr1Mu51TjASc6CsQ.woff2> 17.2KB, 18ms
- https://fonts.gstatic.com/s/varelaround/v20/w8gdH283Tvk_Lua32Tysjlp8uP.woff2 21.4KB, 55ms
- <https://fonts.gstatic.com/s/catamaran/v19/o-0llpQoyXQa2RxT7-5r5TRA.woff2> 32.3KB, 55ms
- <https://fonts.gstatic.com/s/roboto/v30/KFOjCnqEu92Fr1Mu51TLBCc6CsQ.woff2> 17.3KB, 33ms
- https://fonts.gstatic.com/s/montserrat/v26/JTUQjlg1_i6t8kCHKm459WxRyS7m.woff2 33.6KB, 40ms
- <https://fonts.gstatic.com/s/roboto/v30/KFOjCnqEu92Fr1Mu51TzBic6CsQ.woff2> 16.8KB, 33ms
- <https://fonts.gstatic.com/s/roboto/v30/KFOICnqEu92Fr1MmSU5fBBc4.woff2> 15.5KB, 20ms

- <https://glyconics.com/wp-content/litespeed/css/cdf00afc68acbd6234b07eed51320dd1.css?ver=45102> 141KB, 26ms
- <https://glyconics.com/wp-content/plugins/elementor/assets/lib/font-awesome/webfonts/fa-solid-900.woff2> 76.7KB, 10ms
- <https://glyconics.com/wp-content/plugins/elementor/assets/lib/eicons/fonts/eicons.woff2?5.20.0> 92.4KB, 13ms
- <https://glyconics.com/wp-content/plugins/elementor/assets/lib/font-awesome/webfonts/fa-brands-400.woff2> 75.3KB, 9ms

Low **Reduce unused JavaScript** LCP Potential savings of 75.8KB

Reduce unused JavaScript and defer loading scripts until they are required to decrease bytes consumed by network activity.

URL	TRANSFER SIZE	POTENTIAL SAVINGS
https://glyconics.com/wp-content/litespeed/js/3d746884d55570826f1f5ada3e6850ea.js?ver=8cd3f	42.3KB	38.1KB
https://glyconics.com/wp-content/litespeed/js/88cecd16c1cf1c3cbe2f641f313717cb.js?ver=49335	46.9KB	37.7KB

N/A **Largest Contentful Paint element** LCP 370 ms

This is the largest contentful element painted within the viewport.

ELEMENT

```
Affordable Needle-Free Screening With Instant Results Glyconics® Register Your ...
<div class="elementor-element elementor-element-75e023c e-con-boxed e-flex e-con" data-id="75e023c" data-
element_type="container" data-settings="
{&quot;background_background&quot;:&quot;&quot;;&quot;classic&quot;:&quot;&quot;;&quot;content_width&quot;:&quot;&quot;;&quot;boxed&quot;:&quot;&quot;}">
```

PHASE	% OF LCP	TIMING
TTFB	9%	33ms
Load Delay	33%	120ms
Load Time	3%	11ms
Render Delay	55%	200ms

N/A **Reduce JavaScript execution time** TBT 92ms spent executing JavaScript

Consider reducing the time spent parsing, compiling, and executing JS. You may find delivering smaller JS payloads helps with this.

URL	TOTAL CPU TIME	SCRIPT EVALUATION	SCRIPT PARSE
• Unattributable	212ms	29ms	0ms
• https://glyconics.com/	165ms	3ms	2ms
• https://glyconics.com/wp-includes/js/jquery/jquery.min.js?ver=3.7.1	72ms	56ms	1ms

N/A **Reduce initial server response time** FCP LCP Root document took 10ms

Keep the server response time for the main document short because all other requests depend on it.

URL	TIME SPENT
• https://glyconics.com/	10ms

N/A **Avoid serving legacy JavaScript to modern browsers** TBT Potential savings of 174B

Polyfills and transforms enable legacy browsers to use new JavaScript features. However, many aren't necessary for modern browsers. For your bundled JavaScript, adopt a modern script deployment strategy using module/nomodule feature detection to reduce the amount of code shipped to modern browsers, while retaining support for legacy browsers.

URL	POTENTIAL SAVINGS
https://glyconics.com/wp-content/litespeed/js/bd2b9db4d965a504c6cf2a5f9bda0399.js?ver=301ef	174B
Line:0 Column:452	<code>@babel/plugin-transform-clas s</code>

N/A **Avoid large layout shifts** CLS 4 elements found

These DOM elements contribute most to the CLS of the page.

ELEMENT	CLS CONTRIBUTION
Affordable Needle-Free Screening With Instant Results <h1 class="elementor-heading-title elementor-size-default">	0.00
Glyconics® <h3 class="elementor-heading-title elementor-size-default">	0.00
Home Team Technology Opportunites News Contact <ul id="menu-1-3bbef832" class="elementor-nav-menu" data-smartmenus-id="17103084480968691">	0.00
Contact 	0.00

N/A **Minimize main-thread work** TBT Main-thread busy for 551ms

Consider reducing the time spent parsing, compiling and executing JS. You may find delivering smaller JS payloads helps with this.

CATEGORY	TIME SPENT
Other	213ms
Script Evaluation	169ms
Style & Layout	113ms
Parse HTML & CSS	29ms
Script Parsing & Compilation	18ms
Rendering	6ms
Garbage Collection	1ms

N/A **Reduce the impact of third-party code** TBT Total size was 427KB

Third-party code can significantly impact load performance. Limit the number of redundant third-party providers and try to load third-party code after your page has primarily finished loading.

THIRD-PARTY	TRANSFER SIZE	MAIN-THREAD BLOCKING TIME
GOOGLE FONTS	427KB	0ms
• https://fonts.gstatic.com/s/merriweathersans/v26/2-c99IRs1JiJN1FRAMjTN5zd9vgsFHX1QjU.woff2	37.5KB	0ms
• https://fonts.gstatic.com/s/merriweathersans/v26/2-c79IRs1JiJN1FRAMjTN5zd9vgsFHXwcj9w.woff2	37.1KB	0ms
• https://fonts.gstatic.com/s/robotoslab/v34/BngMUXZYTXPlvIbGjJSb6ufN5qU.woff2	33.7KB	0ms
• https://fonts.gstatic.com/s/montserrat/v26/JTUSjlg1_i6t8kCHKm459WxRyS7m.woff2	33.6KB	0ms
• https://fonts.gstatic.com/s/montserrat/v26/JTUSjlg1_i6t8kCHKm459Wlhyw.woff2	32.5KB	0ms
• Other resources	253KB	0ms

N/A **User Timing marks and measures**

No user timings and/or marks found.
