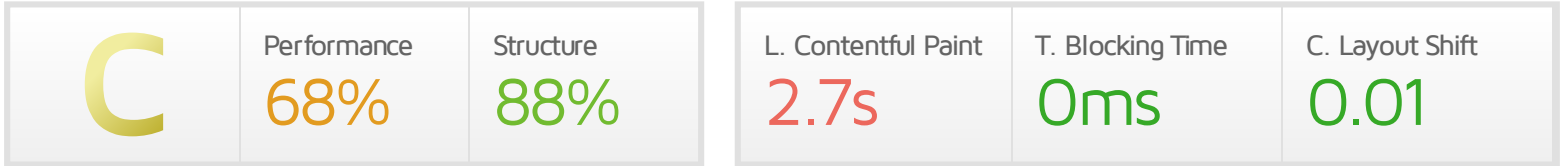


Performance Report for: <http://compandx.com/>

Report generated: Mon, Mar 11, 2024 6:05 AM -0700
 Test Server Location: London, UK
 Using: Chrome 117.0.0.0, Lighthouse 11.0.0



Top Issues

High	Reduce initial server response time <small>FCP LCP</small>	Root document took 815ms
Med-Low	Eliminate render-blocking resources <small>FCP LCP</small>	Potential savings of 278ms
Med-Low	Avoid multiple page redirects <small>FCP LCP</small>	Potential savings of 843ms
Low	Use passive listeners to improve scrolling performance	1 event listener not passive
Low	Avoid chaining critical requests <small>FCP LCP</small>	17 chains found

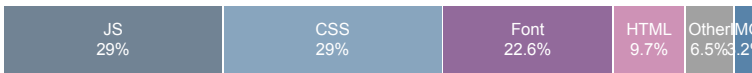
Page Details



Total Page Size - 392KB



Total Page Requests - 31



How does this affect me?

Today's web user expects a fast and seamless website experience. Delivering that fast experience can result in increased visits, conversions and overall happiness.

As if you didn't need more incentive, **Google has announced that they are using page speed in their ranking algorithm.**

About GTmetrix

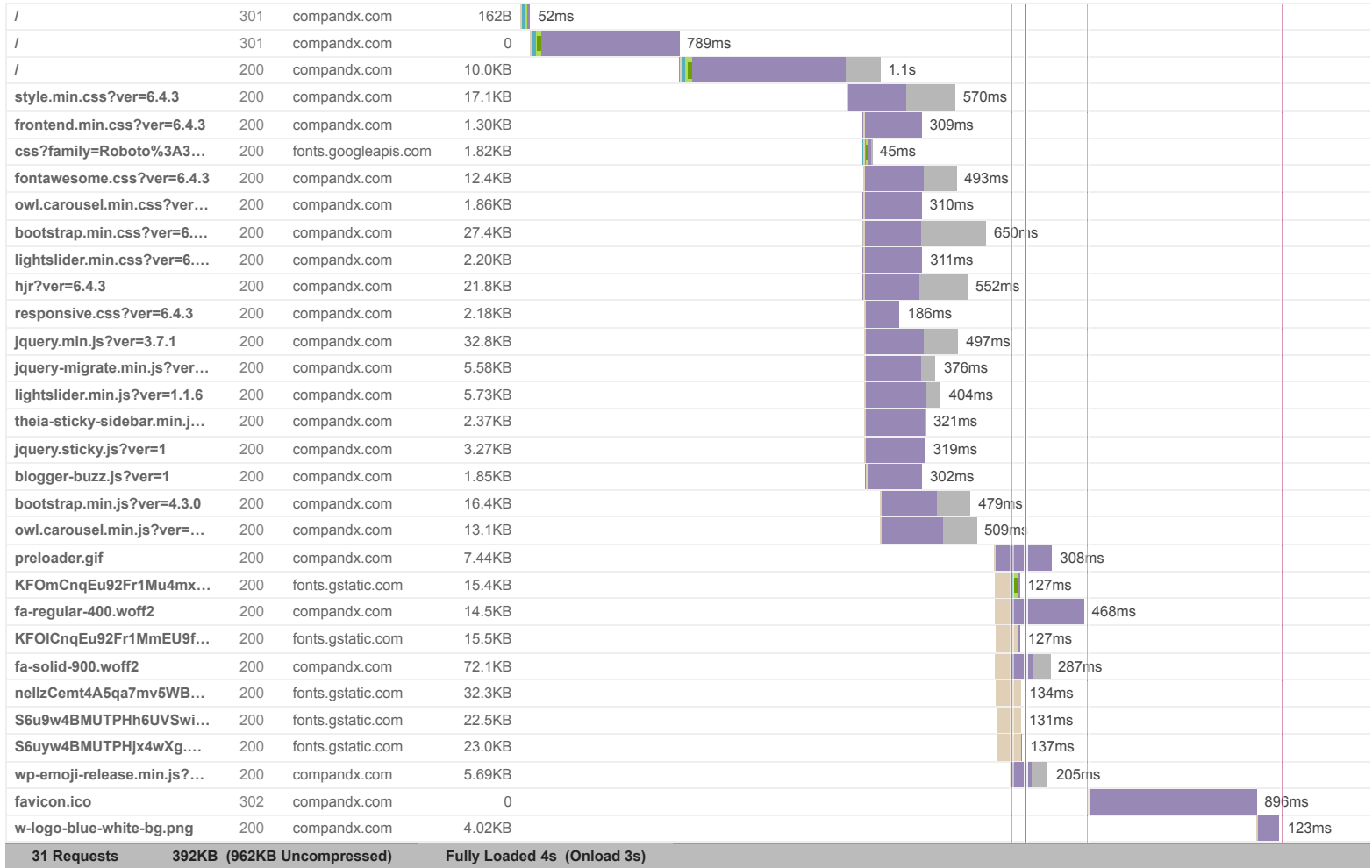


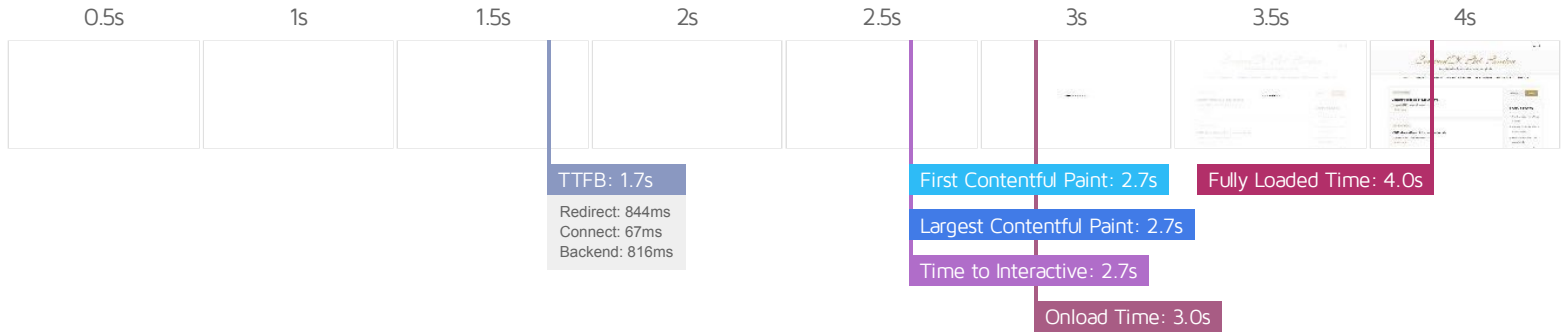
GTmetrix is developed by the good folks at **Carbon60**, a Canadian hosting company with over 28 years experience in web technology.

<https://carbon60.com/>

The waterfall chart displays the loading behaviour of your site in your selected browser. It can be used to discover simple issues such as 404's or more complex issues such as external resources blocking page rendering.

CompanDX Ltd. London – Gene Signalling Research Laboratory, Apoptosis





Performance Metrics

First Contentful Paint How quickly content like text or images are painted onto your page. A good user experience is 0.9s or less.	Much longer than recommended 2.7s	Time to Interactive How long it takes for your page to become fully interactive. A good user experience is 2.5s or less.	OK, but consider improvement 2.7s
Speed Index How quickly the contents of your page are visibly populated. A good user experience is 1.3s or less.	Much longer than recommended 3.7s	Total Blocking Time How much time is blocked by scripts during your page loading process. A good user experience is 150ms or less.	Good - Nothing to do here 0ms
Largest Contentful Paint How long it takes for the largest element of content (e.g. a hero image) to be painted on your page. A good user experience is 1.2s or less.	Much longer than recommended 2.7s	Cumulative Layout Shift How much your page's layout shifts as it loads. A good user experience is a score of 0.1 or less.	Good - Nothing to do here 0.01

Browser Timings

Redirect	844ms	Connect	67ms	Backend	816ms
TTFB	1.7s	DOM Int.	2.6s	DOM Loaded	2.6s
First Paint	2.7s	Onload	3.0s	Fully Loaded	4.0s

IMPACT AUDIT

Low

Ensure text remains visible during webfont load FCP LCP

7 fonts found

Leverage the `font-display` CSS feature to ensure text is user-visible while webfonts are loading.

URL	POTENTIAL SAVINGS
https://fonts.gstatic.com/s/roboto/v30/KFOmCnqEu92Fr1Mu4mxK.woff2	48ms
https://www.compandx.com/tja/assets/library/font-awesome/webfonts/fa-regular-400.woff2	389ms
https://fonts.gstatic.com/s/roboto/v30/KFOICnqEu92Fr1MmEU9fBBc4.woff2	48ms
https://www.compandx.com/tja/assets/library/font-awesome/webfonts/fa-solid-900.woff2	208ms
https://fonts.gstatic.com/s/arizonia/v21/nellzCem14A5qa7mv5WBFqw.woff2	7ms
https://fonts.gstatic.com/s/lato/v24/S6u9w4BMUTPHh6UVSwiPGQ.woff2	5ms
https://fonts.gstatic.com/s/lato/v24/S6uyw4BMUTPHjx4wXg.woff2	4ms

Low

Reduce unused CSS FCP LCP

Potential savings of 74.0KB

Reduce unused rules from stylesheets and defer CSS not used for above-the-fold content to decrease bytes consumed by network activity.

URL	TRANSFER SIZE	POTENTIAL SAVINGS
https://www.compandx.com/tja/assets/library/bootstrap/css/bootstrap.min.css?ver=6.4.3	27.4KB	26.7KB
https://www.compandx.com/tja/hjr?ver=6.4.3	21.8KB	17.9KB
https://www.compandx.com/bvn/css/dist/block-library/style.min.css?ver=6.4.3	17.1KB	17.1KB
https://www.compandx.com/tja/assets/library/font-awesome/css/fontawesome.css?ver=6.4.3	12.4KB	12.3KB

Low

Avoid an excessive DOM size TBT

337 elements

A large DOM will increase memory usage, cause longer style calculations, and produce costly layout reflows.

STATISTIC	ELEMENT	VALUE
Total DOM Elements		337
Maximum DOM Depth	February 3, 2024 <code><time class="entry-date published updated" datetime="2024-02-03T10:07:54+00:00"></code>	15
Maximum Child Elements	UNCATEGORIZED Gentaur reagents of Lab Assays February 3, 2024Leave A Comment On... <code><div class="blog_style_inner"></code>	10

Low

Avoid enormous network payloads LCP

Total size was 396KB

Large network payloads cost users real money and are highly correlated with long load times.

URL	TRANSFER SIZE
https://www.compandx.com/tja/assets/library/font-awesome/webfonts/fa-solid-900.woff2	72.8KB
https://www.compandx.com/bvn/js/jquery/jquery.min.js?ver=3.7.1	32.8KB
https://fonts.gstatic.com/s/arizonia/v21/nellzCemt4A5qa7mv5WBFqw.woff2	32.4KB
https://www.compandx.com/tja/assets/library/bootstrap/css/bootstrap.min.css?ver=6.4.3	27.4KB
https://fonts.gstatic.com/s/lato/v24/S6uyw4BMUTPHjx4wXg.woff2	23.2KB
https://fonts.gstatic.com/s/lato/v24/S6u9w4BMUTPHh6UVSwiPGQ.woff2	22.6KB
https://www.compandx.com/tja/hjr?ver=6.4.3	21.8KB
https://www.compandx.com/bvn/css/dist/block-library/style.min.css?ver=6.4.3	17.1KB
https://www.compandx.com/tja/assets/library/bootstrap/js/bootstrap.min.js?ver=4.3.0	16.4KB
https://fonts.gstatic.com/s/roboto/v30/KFOmCnqEu92Fr1Mu4mxK.woff2	15.9KB

Low

Avoid long main-thread tasks TBT

1 long task found

Lists the longest tasks on the main thread, useful for identifying worst contributors to input delay.

URL	START TIME	DURATION
https://www.compandx.com/	2.5s	81ms

Low

Defer offscreen images

Potential savings of 7.44KB

Consider lazy-loading offscreen and hidden images after all critical resources have finished loading to lower time to interactive.

URL	RESOURCE SIZE	POTENTIAL SAVINGS
https://www.compandx.com/tja/assets/images/preloader.gif	7.44KB	7.44KB

Low

Minify CSS FCP LCP

Potential savings of 8.99KB

Minifying CSS files can reduce network payload sizes.

URL	TRANSFER SIZE	POTENTIAL SAVINGS
https://www.compandx.com/tja/hjr?ver=6.4.3	21.8KB	6.85KB
https://www.compandx.com/tja/assets/library/font-awesome/css/fontawesome.css?ver=6.4.3	12.4KB	2.14KB

N/A

Largest Contentful Paint element LCP

2,670 ms

This is the largest contentful element painted within the viewport.

ELEMENT

CompanDX Ltd. London
`<h1 class="site-title">`

PHASE	% OF LCP	TIMING
TTFB	65%	1.7s
Load Delay	0%	0ms
Load Time	0%	0ms
Render Delay	35%	942ms

N/A **Reduce JavaScript execution time** TBT 85ms spent executing JavaScript

Consider reducing the time spent parsing, compiling, and executing JS. You may find delivering smaller JS payloads helps with this.

URL	TOTAL CPU TIME	SCRIPT EVALUATION	SCRIPT PARSE
• https://www.compandx.com/	181ms	8ms	2ms
• https://www.compandx.com/bvn/js/jquery/jquery.min.js?ver=3.7.1	163ms	66ms	1ms
• Unattributable	96ms	7ms	0ms

N/A **Avoid large layout shifts** CLS 5 elements found

These DOM elements contribute most to the CLS of the page.

ELEMENT	CLS CONTRIBUTION
CompanDX Ltd. London 	0.01
HOME COMPANDX COMPANDX LAUNCHES CANCER TEST OUR COMPANY DISTRIBUTORS ... <div class="main-menu-container-collapse">	0.00
Read More <div class="more-link">	0.00
UNCATEGORIZED NIH References of Lab polyclonals February 3, 2024Leave A Comment... <article id="post-175" class="blog-post-list post-175 post type-post status-publish format-standard hent...">	0.00
Devon <li class="author-meta">	0.00

N/A **Minimize main-thread work** TBT Main-thread busy for 486ms

Consider reducing the time spent parsing, compiling and executing JS. You may find delivering smaller JS payloads helps with this.

CATEGORY	TIME SPENT
Other	203ms
Style & Layout	123ms
Script Evaluation	96ms
Parse HTML & CSS	37ms
Rendering	18ms
Script Parsing & Compilation	6ms

N/A

Reduce the impact of third-party code TBT

Total size was 112KB

Third-party code can significantly impact load performance. Limit the number of redundant third-party providers and try to load third-party code after your page has primarily finished loading.

THIRD-PARTY	TRANSFER SIZE	MAIN-THREAD BLOCKING TIME
GOOGLE FONTS	112KB	0ms
• https://fonts.gstatic.com/s/arizonia/v21/nellzCemt4A5qa7mv5WBFqw.woff2	32.4KB	0ms
• https://fonts.gstatic.com/s/lato/v24/S6uyw4BMUTPHjx4wXg.woff2	23.2KB	0ms
• https://fonts.gstatic.com/s/lato/v24/S6u9w4BMUTPHh6UVSwiPGQ.woff2	22.6KB	0ms
• https://fonts.gstatic.com/s/roboto/v30/KFOmCngEu92Fr1Mu4mxK.woff2	15.9KB	0ms
• https://fonts.gstatic.com/s/roboto/v30/KFOlCnqEu92Fr1MmEU9fBbc4.woff2	15.7KB	0ms

N/A

Avoid serving legacy JavaScript to modern browsers TBT

Nothing to do here, good job!

N/A

User Timing marks and measures

No user timings and/or marks found.