



Performance Report for: <https://bullfrogai.com/>

Report generated: Tue, Mar 12, 2024 1:11 AM -0700
 Test Server Location: London, UK
 Using: Chrome 117.0.0.0, Lighthouse 11.0.0

	Performance	Structure	L. Contentful Paint	T. Blocking Time	C. Layout Shift
	65%	88%	3.1s	0ms	0.07

Top Issues

High	Reduce initial server response time <small>FCP LCP</small>	Root document took 2.0s
Med	Use explicit width and height on image elements <small>CLS</small>	1 image found
Med-Low	Avoid CSS @import <small>FCP LCP</small>	2 resources found
Low	Eliminate render-blocking resources <small>FCP LCP</small>	Potential savings of 170ms
Low	Serve static assets with an efficient cache policy	Potential savings of 88.6KB

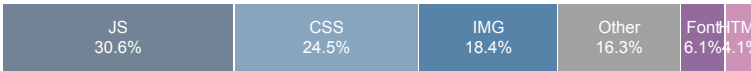
Page Details



Total Page Size - 1.07MB



Total Page Requests - 49



How does this affect me?

Today's web user expects a fast and seamless website experience. Delivering that fast experience can result in increased visits, conversions and overall happiness.

As if you didn't need more incentive, **Google has announced that they are using page speed in their ranking algorithm.**

About GTmetrix

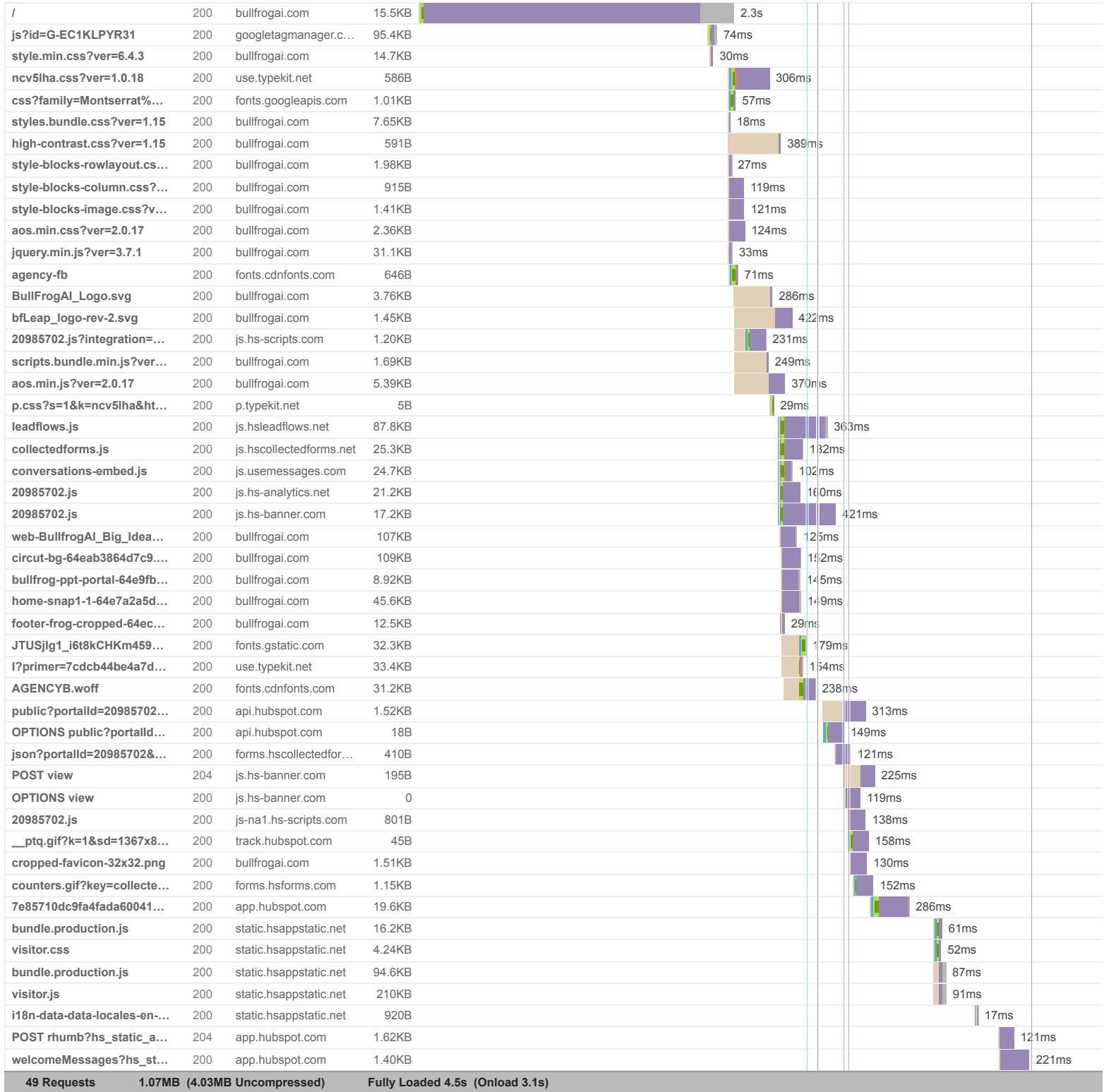


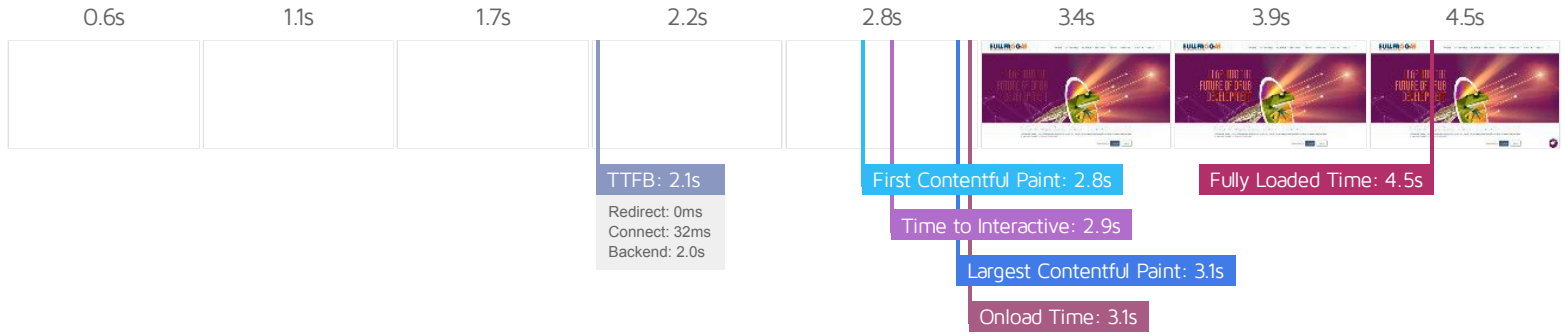
GTmetrix is developed by the good folks at **Carbon60**, a Canadian hosting company with over 28 years experience in web technology.

<https://carbon60.com/>

The waterfall chart displays the loading behaviour of your site in your selected browser. It can be used to discover simple issues such as 404's or more complex issues such as external resources blocking page rendering.

The Future of AI-Assisted Drug Development | Bullfrog AI





Performance Metrics

<p>First Contentful Paint</p> <p>How quickly content like text or images are painted onto your page. A good user experience is 0.9s or less.</p>	<p>Much longer than recommended</p> <p>2.8s</p>	<p>Time to Interactive</p> <p>How long it takes for your page to become fully interactive. A good user experience is 2.5s or less.</p>	<p>OK, but consider improvement</p> <p>2.9s</p>
<p>Speed Index</p> <p>How quickly the contents of your page are visibly populated. A good user experience is 1.3s or less.</p>	<p>Much longer than recommended</p> <p>3.0s</p>	<p>Total Blocking Time</p> <p>How much time is blocked by scripts during your page loading process. A good user experience is 150ms or less.</p>	<p>Good - Nothing to do here</p> <p>0ms</p>
<p>Largest Contentful Paint</p> <p>How long it takes for the largest element of content (e.g. a hero image) to be painted on your page. A good user experience is 1.2s or less.</p>	<p>Much longer than recommended</p> <p>3.1s</p>	<p>Cumulative Layout Shift</p> <p>How much your page's layout shifts as it loads. A good user experience is a score of 0.1 or less.</p>	<p>Good - Nothing to do here</p> <p>0.07</p>

Browser Timings

Redirect	0ms	Connect	32ms	Backend	2.0s
TTFB	2.1s	First Paint	2.8s	DOM Int.	2.9s
DOM Loaded	2.9s	Onload	3.1s	Fully Loaded	4.5s

IMPACT AUDIT

Low

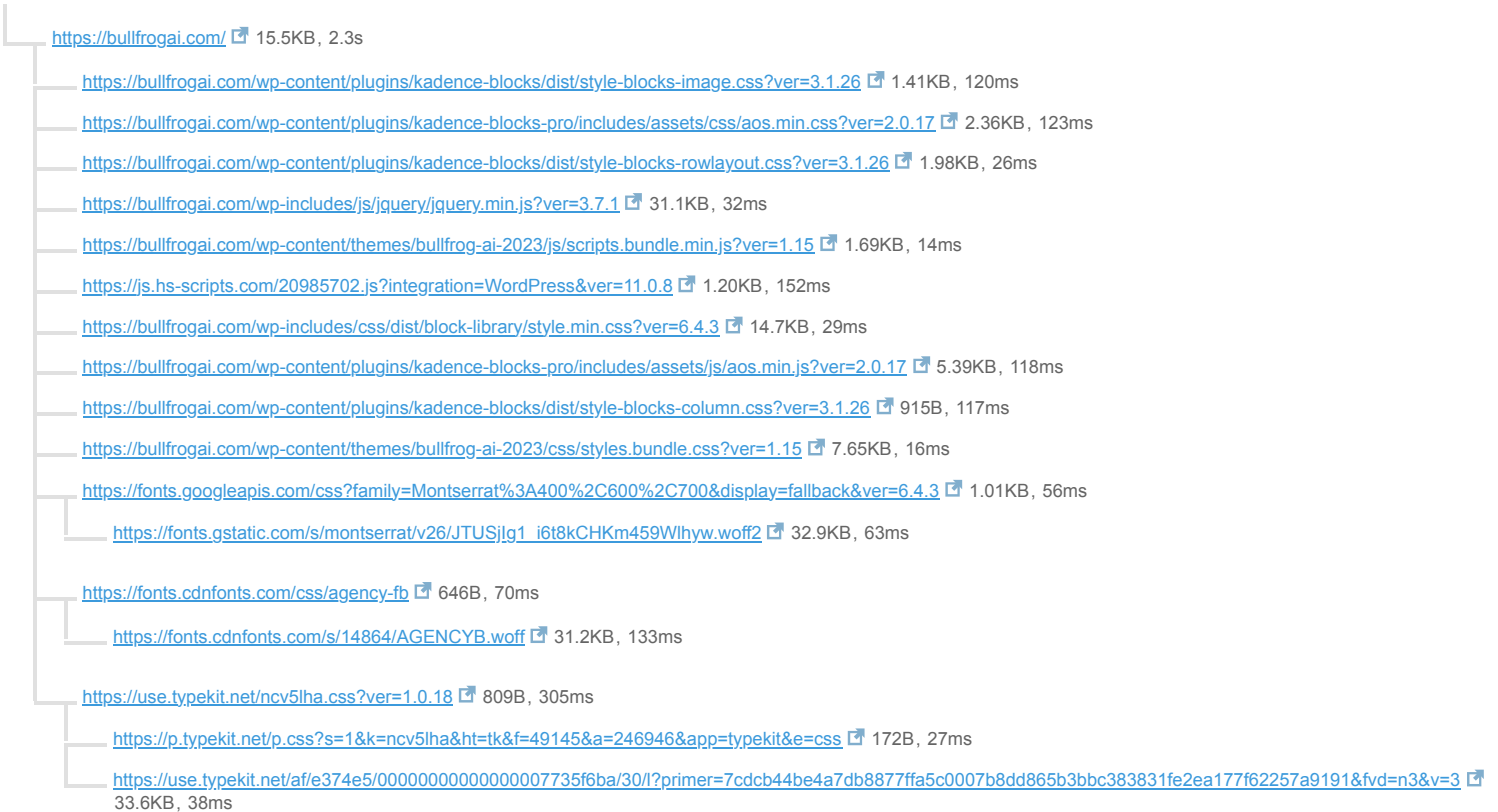
Avoid chaining critical requests FCP LCP

14 chains found

The Critical Request Chains below show you what resources are loaded with a high priority. Consider reducing the length of chains, reducing the download size of resources, or deferring the download of unnecessary resources to improve page load.

Maximum critical path latency: 2.9s

INITIAL NAVIGATION



Low

Use passive listeners to improve scrolling performance

1 event listener not passive

Consider marking your touch and wheel event listeners as `passive` to improve your page's scroll performance.

URL	LOCATION
• https://bullfrogai.com/wp-content/themes/bullfrog-ai-2023/js/scripts.bundle.min.js?ver=1.15	Line:0

Low

Ensure text remains visible during webfont load FCP LCP

2 fonts found

Leverage the `font-display` CSS feature to ensure text is user-visible while webfonts are loading.

URL	POTENTIAL SAVINGS
<ul style="list-style-type: none"> https://use.typekit.net/af/e374e5/00000000000000007735f6ba/30/?primer=7cdcb44be4a7db8877ffa5c0007b8dd865b3bbc383831fe2ea177f62257a9191&fvd=n3&v=3 https://fonts.cdnfonts.com/s/14864/AGENCYB.woff 	<p>38ms</p> <p>133ms</p>

Low **Avoid large layout shifts** CLS 3 elements found

These DOM elements contribute most to the CLS of the page.

ELEMENT	CLS CONTRIBUTION
LEAP INTO THE FUTURE OF DRUG DEVELOPMENT THE NEXT GENERATION OF AI HAS LANDED <code><div class="kt-inside-inner-col"></code>	0.07
Home Technology Pipeline Solutions News Investors About Contact <code><nav id="site-navigation" class="navigation-section main-navigation"></code>	0.01
body.home > div#hubspot-messages-iframe-container > iframe#hubspot-conversations-iframe <code><iframe src="https://app.hubspot.com/conversations-visitor/20985702/threads/utk/7e85710..." id="hubspot-conversations-iframe" allowfullscreen="" data-test-id="chat-widget-iframe"></code>	0.00

Low **Avoid an excessive DOM size** TBT 280 elements

A large DOM will increase memory usage, cause longer style calculations, and produce costly layout reflows.

STATISTIC	ELEMENT	VALUE
Total DOM Elements		280
Maximum DOM Depth	don't get there <code></code>	23
Maximum Child Elements	body.home <code><body class="home page-template page-template-page-templates page-template-no-header pa..." data-aos-easing="ease" data-aos-duration="400" data-aos-delay="0"></code>	10

Low **Avoid enormous network payloads** LCP Total size was 1.08MB

Large network payloads cost users real money and are highly correlated with long load times.

URL	TRANSFER SIZE
https://static.hsappstatic.net/conversations-visitor-ui/static-1.18127/bundles/visitor.js	210KB
https://bullfrogai.com/wp-content/uploads/2023/08/circuit-bg-64eab3864d7c9.webp	109KB
https://bullfrogai.com/wp-content/uploads/2023/08/web-BullfrogAI_Big_Idea_Background_VF-opt-scaled.webp	107KB
https://www.googletagmanager.com/gtag/js?id=G-EC1KLPYR31	95.8KB
https://static.hsappstatic.net/hubspot-dlb/static-1.522/bundle.production.js	94.6KB
https://js.hsleadflows.net/leadflows.js	87.8KB
https://bullfrogai.com/wp-content/uploads/2023/08/home-snap1-1-64e7a2a5d49ef.webp	45.6KB
https://use.typekit.net/af/e374e5/000000000000000007735f6ba/30/?primer=7cdcb44be4a7db8877ffa5c0007b8dd865b3bbc383831fe2ea177f62257a9191&fvd=n3&v=3	33.6KB
https://fonts.gstatic.com/s/montserrat/v26/JTUSJlg1_i6t8kCHKm459Wlhyw.woff2	32.9KB
https://fonts.cdnfonts.com/s/14864/AGENCYB.woff	31.2KB

Low

Avoid long main-thread tasks TBT

1 long task found

Lists the longest tasks on the main thread, useful for identifying worst contributors to input delay.

URL	START TIME	DURATION
https://bullfrogai.com/	2.6s	132ms

Low

Reduce JavaScript execution time TBT

202ms spent executing JavaScript

Consider reducing the time spent parsing, compiling, and executing JS. You may find delivering smaller JS payloads helps with this.

URL	TOTAL CPU TIME	SCRIPT EVALUATION	SCRIPT PARSE
https://bullfrogai.com/	258ms	4ms	6ms
Unattributable	211ms	9ms	0ms
https://www.googletagmanager.com/gtag/js?id=G-EC1KLPYR31	69ms	60ms	5ms
https://js.hscollectedforms.net/collectedforms.js	63ms	56ms	4ms
https://js.hsleadflows.net/leadflows.js	59ms	46ms	8ms

Low

Reduce unused CSS FCP LCP

Potential savings of 14.6KB

Reduce unused rules from stylesheets and defer CSS not used for above-the-fold content to decrease bytes consumed by network activity.

URL	TRANSFER SIZE	POTENTIAL SAVINGS
https://bullfrogai.com/wp-includes/css/dist/block-library/style.min.css?ver=6.4.3	14.7KB	14.6KB

Low

Defer offscreen images

Potential savings of 12.0KB

Consider lazy-loading offscreen and hidden images after all critical resources have finished loading to lower time to interactive.

URL	RESOURCE SIZE	POTENTIAL SAVINGS
https://bullfrogai.com/wp-content/uploads/2023/08/footer-frog-cropped-64ec87dfd9e56.webp	12.0KB	12.0KB

Low

Reduce unused JavaScript LCP

Potential savings of 77.0KB

Reduce unused JavaScript and defer loading scripts until they are required to decrease bytes consumed by network activity.

URL	TRANSFER SIZE	POTENTIAL SAVINGS
https://js.hsleadflows.net/leadflows.js	87.8KB	38.9KB
https://www.googletagmanager.com/gtag/js?id=G-EC1KLPYR31	95.8KB	38.1KB

N/A **Largest Contentful Paint element** LCP 3,100 ms

This is the largest contentful element painted within the viewport.

ELEMENT

LEAP INTO THE FUTURE OF DRUG DEVELOPMENT THE NEXT GENERATION OF AI HAS LANDED
`<div class="kb-row-layout-wrap kb-row-layout-id7_088a11-eb alignfull kb-v-sm-hidden kt...">`

PHASE	% OF LCP	TIMING
TTFB	67%	2.1s
Load Delay	19%	586ms
Load Time	4%	123ms
Render Delay	11%	328ms

N/A **Avoid serving legacy JavaScript to modern browsers** TBT Potential savings of 4.27KB

Polyfills and transforms enable legacy browsers to use new JavaScript features. However, many aren't necessary for modern browsers. For your bundled JavaScript, adopt a modern script deployment strategy using module/nomodule feature detection to reduce the amount of code shipped to modern browsers, while retaining support for legacy browsers.

URL	POTENTIAL SAVINGS
https://js.hsleadflows.net/leadflows.js Line:0 Column:14126 <code>Array.isArray</code> Line:0 Column:14226 <code>Object.keys</code> Line:0 Column:27047 <code>Date.now</code>	4.21KB
https://bullfrogai.com/wp-content/plugins/kadence-blocks-pro/includes/assets/js/aos.min.js?ver=2.0.17 Line:0 Column:7894 <code>@babel/plugin-transform-class</code> <code>es</code>	58B

N/A **Minimize main-thread work** TBT Main-thread busy for 844ms

Consider reducing the time spent parsing, compiling and executing JS. You may find delivering smaller JS payloads helps with this.

CATEGORY	TIME SPENT
Other	287ms
Script Evaluation	285ms
Style & Layout	187ms
Script Parsing & Compilation	35ms
Parse HTML & CSS	24ms
Rendering	20ms
Garbage Collection	2ms

N/A **User Timing marks and measures** 6 user timings

Consider instrumenting your app with the User Timing API to measure your app's real-world performance during key user experiences.

NAME	TYPE	START TIME	DURATION
embed-script-load-time-pre-delay	Measure	3.0s	329ms
embed-script-load-time-post-delay	Measure	3.3s	919ms
embed-script-start-pre-delay	Mark	3.0s	0ms
embed-script-end-pre-delay	Mark	3.3s	0ms
embed-script-start-post-delay	Mark	3.3s	0ms
embed-script-end-post-delay	Mark	4.2s	0ms

N/A **Reduce the impact of third-party code** TBT Total size was 728KB

Third-party code can significantly impact load performance. Limit the number of redundant third-party providers and try to load third-party code after your page has primarily finished loading.

THIRD-PARTY	TRANSFER SIZE	MAIN-THREAD BLOCKING TIME
HSAPPSTATIC.NET	326KB	0ms
• https://static.hsappstatic.net/conversations-visitor-ui/static-1.18127/bundles/visitor.js	210KB	0ms
• https://static.hsappstatic.net/hubspot-dlb/static-1.522/bundle.production.js	94.6KB	0ms
• Other resources	21.3KB	0ms
HUBSPOT	181KB	0ms
• https://js.hsleadflows.net/leadflows.js	87.8KB	0ms
• https://js.hscollectedforms.net/collectedforms.js	25.3KB	0ms
• https://js.hs-analytics.net/analytics/1710231000000/20985702.js	21.2KB	0ms
• https://app.hubspot.com/conversations-visitor/20985702/threads/utk/7e85710dc9fa4fada60041493f186204?uuiid=edacf1f648954e218d767bd50ec77a8c&mobile=false&mobileSafari=false&hideWelcomeMessage=false&hstc=&domain=bullfrogai.com&inApp53=false&messagesUtk=7e85710dc9fa4fada60041493f186204&uri=https%3A%2F%2Fbullfrogai.com%2F&inline=false&isFullscreen=false&globalCookieOptOut=&isFirstVisitorSession=true&isAttachmentDisabled=false&isInitialInputFocusDisabled=false&enableWidgetCookieBanner=false&isInCMS=false	19.6KB	0ms
• https://js.hs-banner.com/20985702.js	17.2KB	0ms
• Other resources	10.2KB	0ms
GOOGLE TAG MANAGER	95.8KB	0ms
• https://www.googletagmanager.com/gtag/js?id=G-EC1KLPYR31	95.8KB	0ms
ADOBE TYPEKIT	34.6KB	0ms
• https://use.typekit.net/af/e374e5/000000000000000007735f6ba/30/?primer=7cdcb44be4a7db8877ffa5c0007b8dd865b3bbc383831fe2ea177f62257a9191&fvd=n3&v=3	33.6KB	0ms
GOOGLE FONTS	33.9KB	0ms
• https://fonts.gstatic.com/s/montserrat/v26/JTUSjlg1_i6t8kCHKm459Wlhyw.woff2	32.9KB	0ms
CDNFONTS.COM	31.8KB	0ms
• https://fonts.cdnfonts.com/s/14864/AGENCYB.woff	31.2KB	0ms
USEMESSAGES.COM	24.7KB	0ms
• https://js.usemessages.com/conversations-embed.js	24.7KB	0ms