



Performance Report for: <https://app.seositecheckup.com/>

Report generated: Tue, Mar 12, 2024 9:23 PM -0700
 Test Server Location: London, UK
 Using: Chrome 117.0.0.0, Lighthouse 11.0.0

A	Performance	Structure	L. Contentful Paint	T. Blocking Time	C. Layout Shift
	93%	97%	1.3s	0ms	0

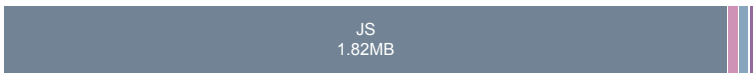
Top Issues

Med	Serve static assets with an efficient cache policy	Potential savings of 1.24MB
Low	Use a Content Delivery Network (CDN)	1 resource found
Low	Reduce unused JavaScript <small>LCP</small>	Potential savings of 807KB
Low	Avoid enormous network payloads <small>LCP</small>	Total size was 1.92MB
Low	Eliminate render-blocking resources <small>FCP LCP</small>	Potential savings of 32ms

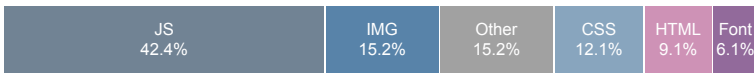
Page Details



Total Page Size - 1.91MB



Total Page Requests - 33



How does this affect me?

Today's web user expects a fast and seamless website experience. Delivering that fast experience can result in increased visits, conversions and overall happiness.

As if you didn't need more incentive, **Google has announced that they are using page speed in their ranking algorithm.**

About GTmetrix

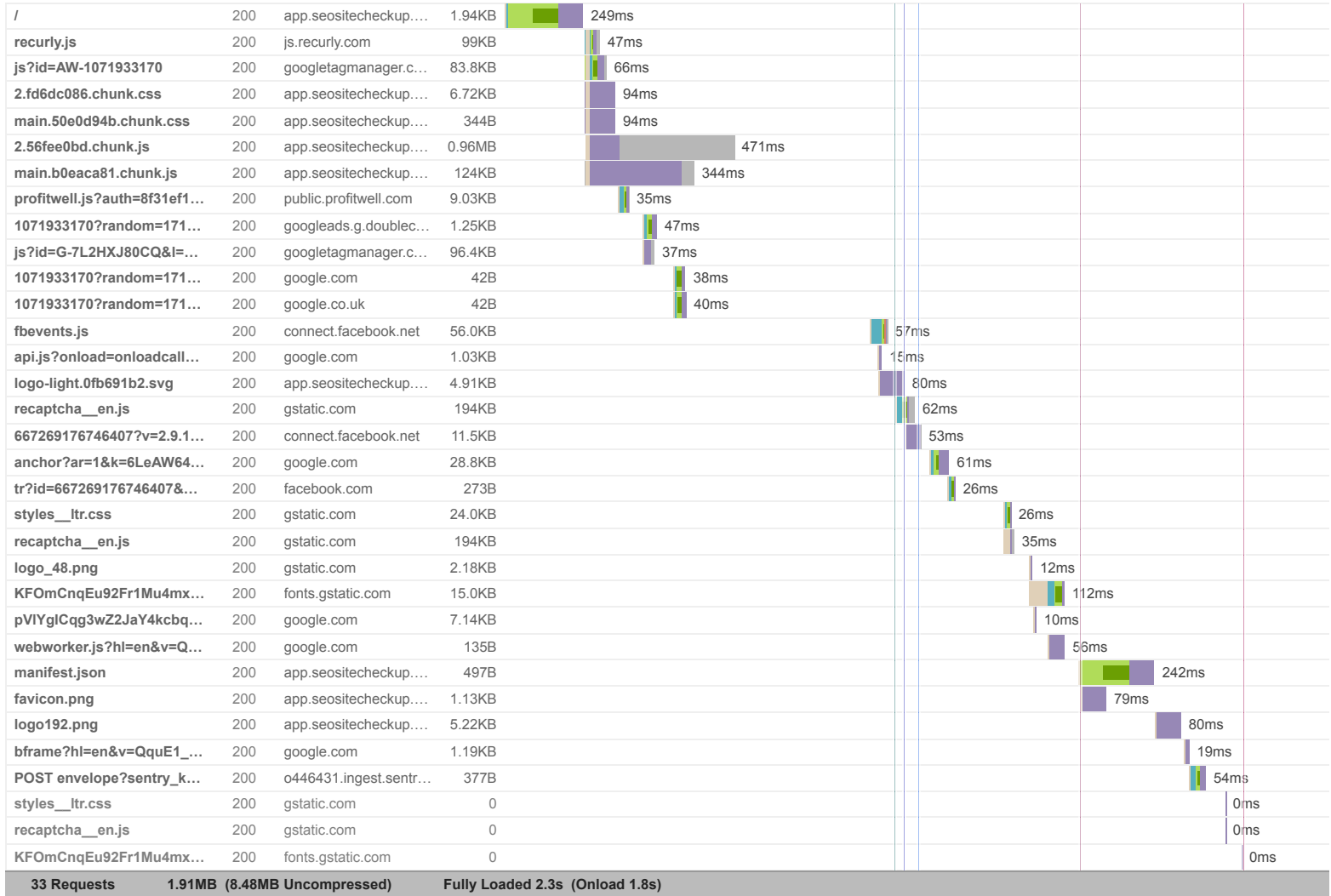


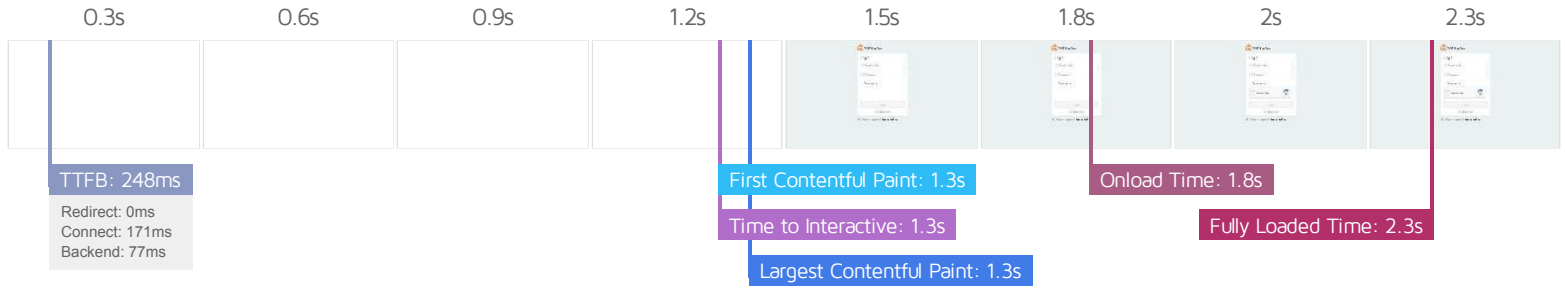
GTmetrix is developed by the good folks at **Carbon60**, a Canadian hosting company with over 28 years experience in web technology.

<https://carbon60.com/>

The waterfall chart displays the loading behaviour of your site in your selected browser. It can be used to discover simple issues such as 404's or more complex issues such as external resources blocking page rendering.

SEO Site Checkup





Performance Metrics

<p>First Contentful Paint</p> <p>How quickly content like text or images are painted onto your page. A good user experience is 0.9s or less.</p>	<p>Longer than recommended</p> <p>1.3s</p>	<p>Time to Interactive</p> <p>How long it takes for your page to become fully interactive. A good user experience is 2.5s or less.</p>	<p>Good - Nothing to do here</p> <p>1.3s</p>
<p>Speed Index</p> <p>How quickly the contents of your page are visibly populated. A good user experience is 1.3s or less.</p>	<p>Good - Nothing to do here</p> <p>1.3s</p>	<p>Total Blocking Time</p> <p>How much time is blocked by scripts during your page loading process. A good user experience is 150ms or less.</p>	<p>Good - Nothing to do here</p> <p>0ms</p>
<p>Largest Contentful Paint</p> <p>How long it takes for the largest element of content (e.g. a hero image) to be painted on your page. A good user experience is 1.2s or less.</p>	<p>OK, but consider improvement</p> <p>1.3s</p>	<p>Cumulative Layout Shift</p> <p>How much your page's layout shifts as it loads. A good user experience is a score of 0.1 or less.</p>	<p>Good - Nothing to do here</p> <p>0</p>

Browser Timings

Redirect	0ms	Connect	171ms	Backend	77ms
TTFB	248ms	DOM Int.	1.2s	DOM Loaded	1.2s
First Paint	1.3s	Onload	1.8s	Fully Loaded	2.3s

IMPACT AUDIT

Low **Reduce JavaScript execution time** TBT 612ms spent executing JavaScript

Consider reducing the time spent parsing, compiling, and executing JS. You may find delivering smaller JS payloads helps with this.

URL	TOTAL CPU TIME	SCRIPT EVALUATION	SCRIPT PARSE
https://app.seositecheckup.com/static/js/main.b0eaca81.chunk.js	371ms	345ms	9ms
https://app.seositecheckup.com/static/js/2.56fee0bd.chunk.js	204ms	144ms	50ms
Unattributable	184ms	5ms	0ms
https://app.seositecheckup.com/	91ms	4ms	1ms
https://www.googletagmanager.com/gtag/js?id=AW-1071933170	54ms	48ms	2ms

Low **Avoid long main-thread tasks** TBT 2 long tasks found

Lists the longest tasks on the main thread, useful for identifying worst contributors to input delay.

URL	START TIME	DURATION
https://app.seositecheckup.com/static/js/main.b0eaca81.chunk.js	825ms	357ms
https://app.seositecheckup.com/static/js/2.56fee0bd.chunk.js	744ms	50ms

Low **Reduce unused CSS** FCP LCP Potential savings of 24.2KB

Reduce unused rules from stylesheets and defer CSS not used for above-the-fold content to decrease bytes consumed by network activity.

URL	TRANSFER SIZE	POTENTIAL SAVINGS
<code>/* stylelint-disable at-rule-empty-line-before,at-rule-name-space-after,at-rule-no-unknown */ /* st...</code>	13.4KB	13.4KB
<code>/* stylelint-disable at-rule-empty-line-before,at-rule-name-space-after,at-rule-no-unknown */ /* st...</code>	10.9KB	10.8KB

Low **Minify CSS** FCP LCP Potential savings of 2.53KB

Minifying CSS files can reduce network payload sizes.

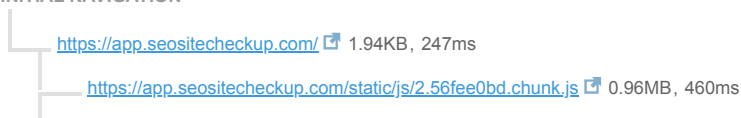
URL	TRANSFER SIZE	POTENTIAL SAVINGS
<code>/* stylelint-disable at-rule-empty-line-before,at-rule-name-space-after,at-rule-no-unknown */ /* st...</code>	10.9KB	2.53KB

Low **Avoid chaining critical requests** FCP LCP 5 chains found

The Critical Request Chains below show you what resources are loaded with a high priority. Consider reducing the length of chains, reducing the download size of resources, or deferring the download of unnecessary resources to improve page load.

Maximum critical path latency: **725ms**

INITIAL NAVIGATION



- <https://app.seositecheckup.com/static/css/2.fd6dc086.chunk.css> 6.72KB, 83ms
- <https://app.seositecheckup.com/static/css/main.50e0d94b.chunk.css> 654B, 83ms
- <https://js.recurly.com/v4/recurly.js> 100KB, 36ms
- <https://app.seositecheckup.com/static/js/main.b0eaca81.chunk.js> 124KB, 334ms

N/A **Avoid an excessive DOM size** TBT 72 elements

A large DOM will increase memory usage, cause longer style calculations, and produce costly layout reflows.

STATISTIC	ELEMENT	VALUE
Total DOM Elements		72
Maximum DOM Depth	span.ant-input-prefix > i.anticon > svg > path <path d="M928 160H96c-17.7 0-32 14.3-32 32v640c0 17.7 14.3 32 32 32h832c17.7 0 32-17.7 32-32" />	20
Maximum Child Elements	body <body>	7

N/A **Largest Contentful Paint element** LCP 1,310 ms

This is the largest contentful element painted within the viewport.

ELEMENT

div > div.LoginForm > div.authentication-form-wrapper > div.auth-logo
<div class="auth-logo">

PHASE	% OF LCP	TIMING
TTFB	19%	248ms
Load Delay	72%	940ms
Load Time	6%	78ms
Render Delay	3%	38ms

N/A **Reduce initial server response time** FCP LCP Root document took 76ms

Keep the server response time for the main document short because all other requests depend on it.

URL	TIME SPENT
• https://app.seositecheckup.com/	76ms

N/A **Avoid serving legacy JavaScript to modern browsers** TBT Potential savings of 20.4KB

Polyfills and transforms enable legacy browsers to use new JavaScript features. However, many aren't necessary for modern browsers. For your bundled JavaScript, adopt a modern script deployment strategy using module/nomodule feature detection to reduce the amount of code shipped to modern browsers,

while retaining support for legacy browsers.

URL	POTENTIAL SAVINGS
https://connect.facebook.net/en_US/fbevents.js Line:23 Column:2302	10.7KB
Line:24 Column:20141	@babel/plugin-transform-class-arrays.prototype.filter Array.prototype.filter
Line:24 Column:26258	Array.prototype.map
Line:24 Column:28008	Array.prototype.find
https://app.seositecheckup.com/static/js/2.56fee0bd.chunk.js Line:0 Column:77136	9.36KB
Line:0 Column:2457962	@babel/plugin-transform-class-arrays.from
Line:0 Column:1707806	Object.defineProperty
Line:0 Column:1716044	Object.setPrototypeOf
https://js.recurly.com/v4/recurly.js Line:1 Column:2574	272B
https://connect.facebook.net/signals/config/667269176746407?v=2.9.148&r=stable&domain=app.seositecheckup.com&hme=20c913bcd4be51a752120153aa5caaecb3ee86c7f26cf737846e40b202aba68&ex_m=62%2C106%2C94%2C98%2C53%2C3%2C88%2C61%2C14%2C86%2C79%2C44%2C46%2C150%2C153%2C164%2C160%2C161%2C163%2C25%2C89%2C45%2C68%2C162%2C145%2	47B

C148%2C157%2C158%2C165%2C115%2C13%2C43%2C169%2C168%2C117%2C16%2C29%2C32%2C1%2C36%2C57%2C58%2C59%2C63%2C83%2C15%2C12%2C85%2C82%2C81%2C95%2C97%2C31%2C96%2C26%2C22%2C146%2C149%2C124%2C24%2C9%2C10%2C11%2C5%2C6%2C21%2C19%2C20%2C49%2C54%2C56%2C66%2C90%2C23%2C67%2C8%2C7%2C71%2C41%2C18%2C92%2C91%2C17%2C4%2C73%2C80%2C72%2C78%2C40%2C39%2C77%2C33%2C35%2C76%2C48%2C74%2C28%2C37%2C65%2C0%2C84%2C75%2C2%2C30%2C55%2C34%2C93%2C38%2C70%2C60%2C99%2C52%2C51%2C27%2C87%2C50%2C47%2C42%2C69%2C64%2C100

@bab
el/p
lugi
n-tr
ansf
orm-
clas
ses

Line:19 Column:2057

N/A **Avoid large layout shifts** CLS 3 elements found

These DOM elements contribute most to the CLS of the page.

ELEMENT	CLS CONTRIBUTION
Login <div class="ant-form-item-control">	0.00
Don't have an account? Sign up for free <div class="under-card-info">	0.00
Forgot password? <div class="fake-link forgot-pass">	0.00

N/A **Minimize main-thread work** TBT Main-thread busy for 1.1s

Consider reducing the time spent parsing, compiling and executing JS. You may find delivering smaller JS payloads helps with this.

CATEGORY	TIME SPENT
Script Evaluation	720ms
Other	212ms
Script Parsing & Compilation	87ms
Style & Layout	51ms
Garbage Collection	27ms
Parse HTML & CSS	7ms
Rendering	3ms

N/A **User Timing marks and measures** 5 user timings

Consider instrumenting your app with the User Timing API to measure your app's real-world performance during key user experiences.

NAME	TYPE	START TIME	DURATION
sentry-tracing-init	Mark	1.1s	0ms
fbevents:start:unwantedDataProcessing_667269176746407	Mark	1.4s	0ms
fbevents:end:unwantedDataProcessing_667269176746407	Mark	1.4s	0ms
fbevents:start:validateUrlProcessing_667269176746407	Mark	1.4s	0ms
fbevents:end:validateUrlProcessing_667269176746407	Mark	1.4s	0ms

N/A

Reduce the impact of third-party code TBT

Total size was 833KB

Third-party code can significantly impact load performance. Limit the number of redundant third-party providers and try to load third-party code after your page has primarily finished loading.

THIRD-PARTY	TRANSFER SIZE	MAIN-THREAD BLOCKING TIME
GOOGLE CDN	416KB	0ms
• https://www.gstatic.com/recaptcha/releases/QquE1_MNjnFHgZF4HPsEcf_2/recaptcha_en.js	390KB	0ms
• https://www.gstatic.com/recaptcha/releases/QquE1_MNjnFHgZF4HPsEcf_2/styles_ltr.css	24.6KB	0ms
GOOGLE TAG MANAGER	181KB	0ms
• https://www.googletagmanager.com/gtag/js?id=G-7L2HXJ80CQ&l=dataLayer&cx=c	96.6KB	0ms
• https://www.googletagmanager.com/gtag/js?id=AW-1071933170	84.3KB	0ms
RECURLY.COM	100KB	0ms
• https://js.recurly.com/v4/recurly.js	100KB	0ms
FACEBOOK	69.8KB	0ms
• https://connect.facebook.net/en_US/fbevents.js	58.0KB	0ms
• https://connect.facebook.net/signals/config/667269176746407?v=2.9.148&r=stable&domain=app.seo.sitecheckup.com&hme=20c913bdcd4be51a752120153aa5caae3ee86c7f26cf737846e40b202aba68&ex_m=62%2C106%2C94%2C98%2C53%2C3%2C88%2C61%2C14%2C86%2C79%2C44%2C46%2C150%2C153%2C164%2C160%2C161%2C163%2C25%2C89%2C45%2C68%2C162%2C145%2C148%2C157%2C158%2C165%2C115%2C13%2C43%2C169%2C168%2C117%2C16%2C29%2C32%2C1%2C36%2C57%2C58%2C59%2C63%2C83%2C15%2C12%2C85%2C82%2C81%2C95%2C97%2C31%2C96%2C26%2C22%2C146%2C149%2C124%2C24%2C9%2C10%2C11%2C5%2C6%2C21%2C19%2C20%2C49%2C54%2C56%2C66%2C90%2C23%2C67%2C8%2C7%2C71%2C41%2C18%2C92%2C91%2C17%2C4%2C73%2C80%2C72%2C78%2C40%2C39%2C77%2C33%2C35%2C76%2C48%2C74%2C28%2C37%2C65%2C0%2C84%2C75%2C2%2C30%2C55%2C34%2C93%2C38%2C70%2C60%2C99%2C52%2C51%2C27%2C87%2C50%2C47%2C42%2C69%2C64%2C100	11.5KB	0ms
OTHER GOOGLE APIS/SDKS	39.6KB	0ms
• https://www.google.com/recaptcha/api2/anchor?ar=1&k=6LeAW64bAAAAANMHgFS0ftq8SsbKrZD-ty_ZJRe78&co=aHR0cHM6Ly9hcHAuc2Vvc2l0ZWNoZW50ZW50X29tOjQ0Mw.&hl=en&type=image&v=QquE1_MNjnFHgZF4HPsEcf_2&theme=light&size=normal&badge=bottomright&cb=p2rgnfrdcoes	28.8KB	0ms
• https://www.google.com/js/bg/pVIYgICqg3wZ2JaY4kcbqn6HC1zR-NrcTdTDqQCfV4.js	7.54KB	0ms
GOOGLE FONTS	15.5KB	0ms
• https://fonts.gstatic.com/s/roboto/v18/KFOmCnqEu92Fr1Mu4mxK.woff2	15.5KB	0ms
PROFITWELL.COM	9.03KB	0ms
• https://public.profitwell.com/js/profitwell.js?auth=8f31ef1e7705ac68fac2fe2419a49511	9.03KB	0ms
GOOGLE/DOUBLECLICK ADS	1.77KB	0ms
SENTRY	377B	0ms