



Performance Report for: <https://ablacon.com/>

Report generated: Mon, Mar 11, 2024 10:21 PM -0700
 Test Server Location: London, UK
 Using: Chrome 117.0.0.0, Lighthouse 11.0.0

A	Performance	Structure	L. Contentful Paint	T. Blocking Time	C. Layout Shift
	100%	97%	638ms	0ms	0

Top Issues

Med-Low	Lazy load third-party resources with facades <small>TBT</small>	1 facade alternative available
Med-Low	Eliminate render-blocking resources <small>FCP LCP</small>	Potential savings of 187ms
Low	Serve static assets with an efficient cache policy	Potential savings of 69.8KB
Low	Avoid an excessive DOM size <small>TBT</small>	332 elements
Low	Avoid enormous network payloads <small>LCP</small>	Total size was 440KB

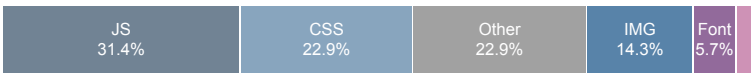
Page Details



Total Page Size - 438KB



Total Page Requests - 35



■ HTML
 ■ JS
 ■ CSS
 ■ IMG
 ■ Video
 ■ Font
 ■ Other

How does this affect me?

Today's web user expects a fast and seamless website experience. Delivering that fast experience can result in increased visits, conversions and overall happiness.

As if you didn't need more incentive, **Google has announced that they are using page speed in their ranking algorithm.**

About GTmetrix

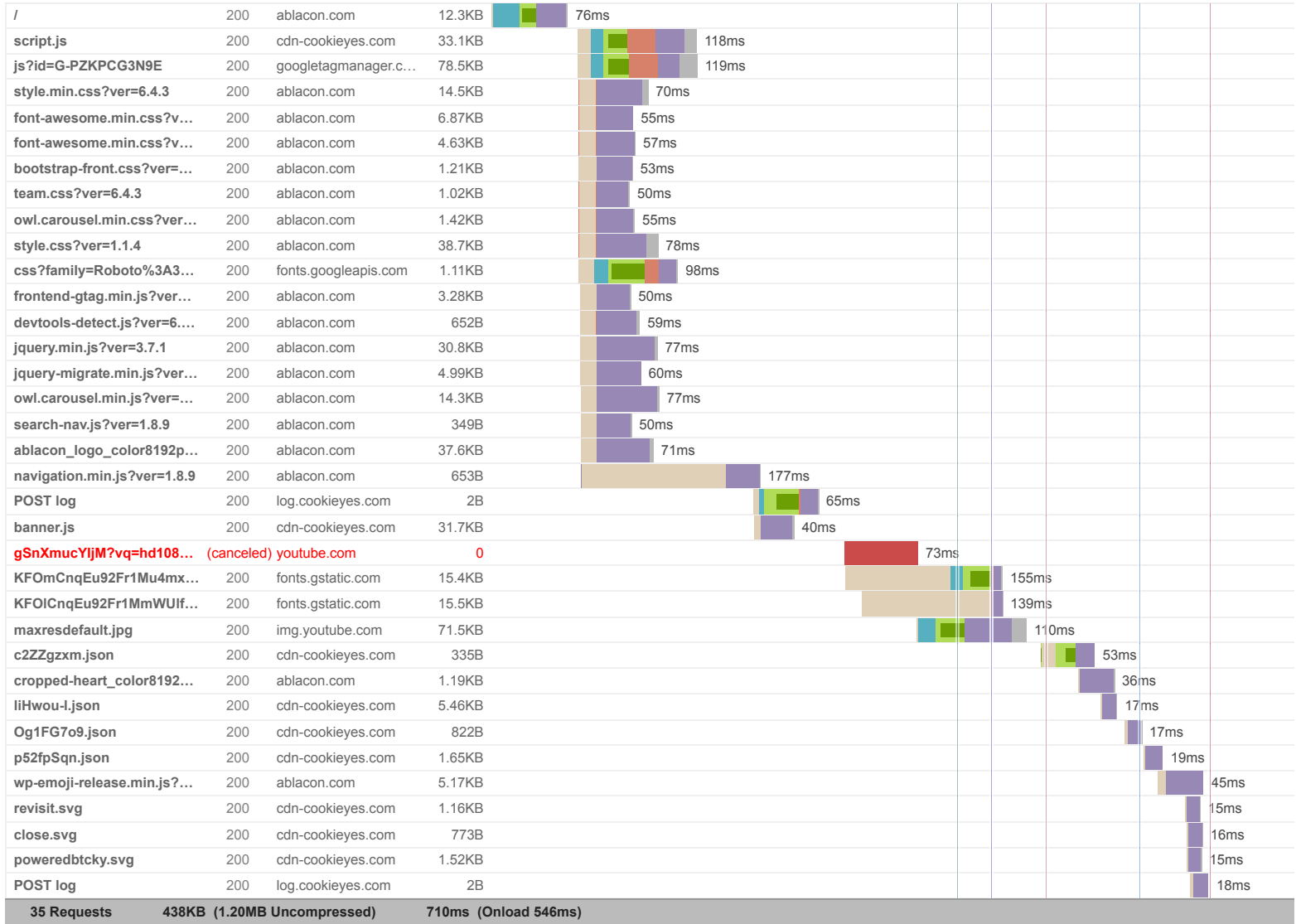


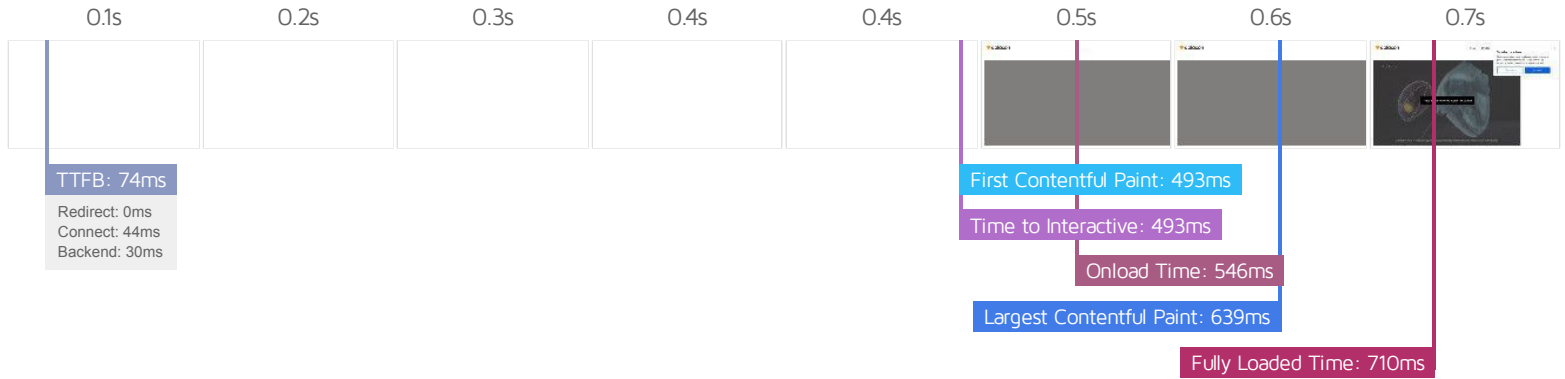
GTmetrix is developed by the good folks at **Carbon60**, a Canadian hosting company with over 28 years experience in web technology.

<https://carbon60.com/>

The waterfall chart displays the loading behaviour of your site in your selected browser. It can be used to discover simple issues such as 404's or more complex issues such as external resources blocking page rendering.

Electrographic Flow (EGF)™ | Ablacon





Performance Metrics

<p>First Contentful Paint</p> <p>How quickly content like text or images are painted onto your page. A good user experience is 0.9s or less.</p>	<p>Good - Nothing to do here</p> <p>493ms</p>	<p>Time to Interactive</p> <p>How long it takes for your page to become fully interactive. A good user experience is 2.5s or less.</p>	<p>Good - Nothing to do here</p> <p>493ms</p>
<p>Speed Index</p> <p>How quickly the contents of your page are visibly populated. A good user experience is 1.3s or less.</p>	<p>Good - Nothing to do here</p> <p>640ms</p>	<p>Total Blocking Time</p> <p>How much time is blocked by scripts during your page loading process. A good user experience is 150ms or less.</p>	<p>Good - Nothing to do here</p> <p>0ms</p>
<p>Largest Contentful Paint</p> <p>How long it takes for the largest element of content (e.g. a hero image) to be painted on your page. A good user experience is 1.2s or less.</p>	<p>Good - Nothing to do here</p> <p>638ms</p>	<p>Cumulative Layout Shift</p> <p>How much your page's layout shifts as it loads. A good user experience is a score of 0.1 or less.</p>	<p>Good - Nothing to do here</p> <p>0</p>

Browser Timings

Redirect	0ms	Connect	44ms	Backend	30ms
TTFB	74ms	DOM Int.	458ms	DOM Loaded	459ms
First Paint	493ms	Onload	546ms	Fully Loaded	710ms

IMPACT AUDIT

Low **Properly size images** Potential savings of 37.2KB

Serve images that are appropriately-sized to save cellular data and improve load time.

URL	RESOURCE SIZE	POTENTIAL SAVINGS
https://ablacon.com/wp-content/uploads/2019/04/ablacon_logo_color8192px-1600x307.png	37.6KB	37.2KB

Low **Ensure text remains visible during webfont load** FCP LCP 2 fonts found

Leverage the `font-display` CSS feature to ensure text is user-visible while webfonts are loading.

URL	POTENTIAL SAVINGS
https://fonts.gstatic.com/s/roboto/v30/KFOmCnqEu92Fr1Mu4mxK.woff2	52ms
https://fonts.gstatic.com/s/roboto/v30/KFOICnqEu92Fr1MmWUlfBBc4.woff2	53ms

Low **Avoid long main-thread tasks** TBT 1 long task found

Lists the longest tasks on the main thread, useful for identifying worst contributors to input delay.

URL	START TIME	DURATION
https://cdn-cookieyes.com/client_data/1db93ee2b701940c49a09389/script.js	318ms	101ms

Low **Reduce JavaScript execution time** TBT 140ms spent executing JavaScript

Consider reducing the time spent parsing, compiling, and executing JS. You may find delivering smaller JS payloads helps with this.

URL	TOTAL CPU TIME	SCRIPT EVALUATION	SCRIPT PARSE
Unattributable	204ms	15ms	0ms
https://ablacon.com/	160ms	35ms	2ms
https://cdn-cookieyes.com/client_data/1db93ee2b701940c49a09389/script.js	118ms	37ms	1ms
https://cdn-cookieyes.com/client_data/1db93ee2b701940c49a09389/banner.js	51ms	42ms	5ms

Low **Reduce unused CSS** FCP LCP Potential savings of 51.6KB

Reduce unused rules from stylesheets and defer CSS not used for above-the-fold content to decrease bytes consumed by network activity.

URL	TRANSFER SIZE	POTENTIAL SAVINGS
https://ablacon.com/wp-content/themes/mins/style.css?ver=1.1.4	38.7KB	37.1KB
https://ablacon.com/wp-includes/css/dist/block-library/style.min.css?ver=6.4.3	14.5KB	14.4KB

Low **Serve images in next-gen formats** Potential savings of 52.8KB

Image formats like WebP and AVIF often provide better compression than PNG or JPEG, which means faster downloads and less data consumption.

URL	RESOURCE SIZE	POTENTIAL SAVINGS
https://img.youtube.com/vi/gSnXmucYjJM/maxresdefault.jpg	71.5KB	30.6KB
https://ablacon.com/wp-content/uploads/2019/04/ablacon_logo_color8192px-1600x307.png	37.6KB	22.1KB

LOW **Minify CSS** FCP LCP Potential savings of 5.57KB

Minifying CSS files can reduce network payload sizes.

URL	TRANSFER SIZE	POTENTIAL SAVINGS
<ul style="list-style-type: none"> https://ablacon.com/wp-content/themes/mins/style.css?ver=1.1.4 	38.7KB	5.57KB

LOW **Minify JavaScript** FCP LCP Potential savings of 5.76KB

Minifying JavaScript files can reduce payload sizes and script parse time.

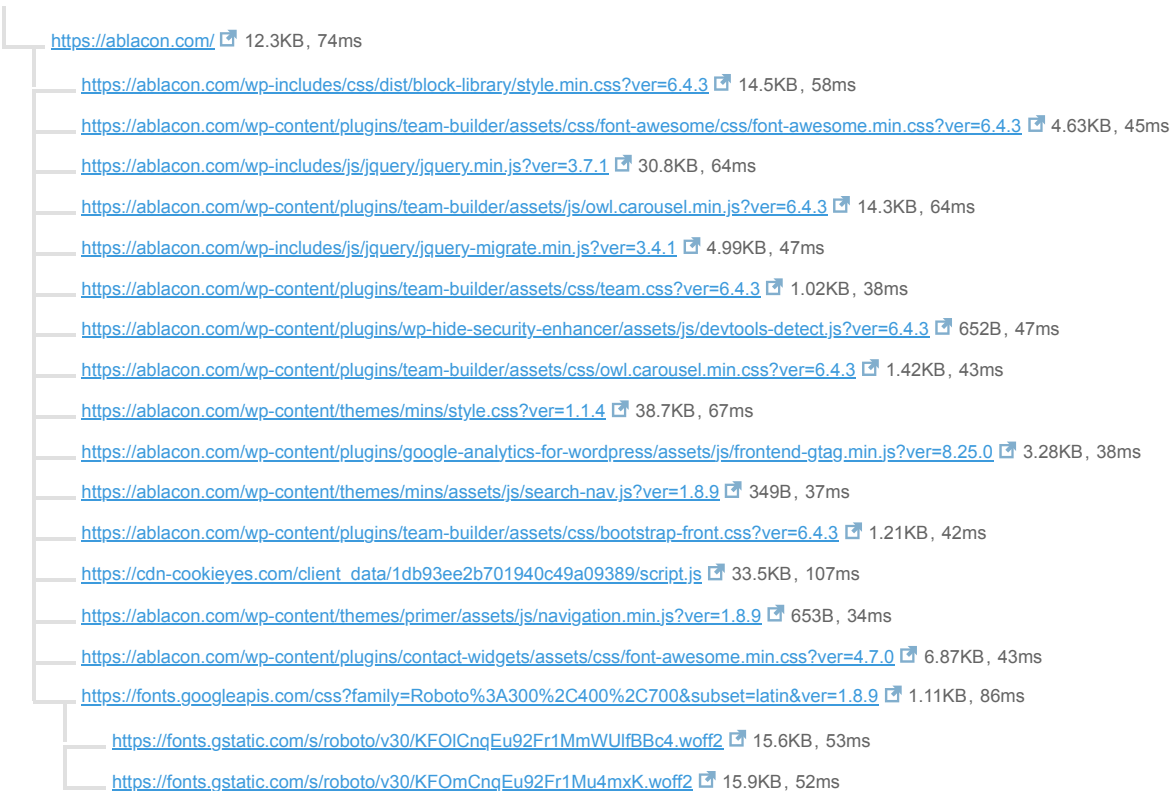
URL	TRANSFER SIZE	POTENTIAL SAVINGS
<ul style="list-style-type: none"> https://ablacon.com/wp-content/plugins/team-builder/assets/js/owl.carousel.min.js?ver=6.4.3 	14.3KB	5.76KB

LOW **Avoid chaining critical requests** FCP LCP 17 chains found

The Critical Request Chains below show you what resources are loaded with a high priority. Consider reducing the length of chains, reducing the download size of resources, or deferring the download of unnecessary resources to improve page load.

Maximum critical path latency: **504ms**

INITIAL NAVIGATION



Low

Reduce unused JavaScript LCP

Potential savings of 20.6KB

Reduce unused JavaScript and defer loading scripts until they are required to decrease bytes consumed by network activity.

URL	TRANSFER SIZE	POTENTIAL SAVINGS
https://ablacon.com/wp-includes/js/jquery/jquery.min.js?ver=3.7.1	30.8KB	20.6KB

N/A

Largest Contentful Paint element LCP

640 ms

This is the largest contentful element painted within the viewport.

ELEMENT

Please accept cookies to access this content

```
<div class="video-placeholder-youtube" data-cky-tag="video-placeholder" id="bCydliS1" style="width: 1366px; height: 608px;">
```

PHASE	% OF LCP	TIMING
TTFB	12%	74ms
Load Delay	54%	346ms
Load Time	17%	109ms
Render Delay	17%	108ms

N/A

Reduce initial server response time FCP LCP

Root document took 29ms

Keep the server response time for the main document short because all other requests depend on it.

URL	TIME SPENT
• https://ablacon.com/	29ms

N/A

Avoid serving legacy JavaScript to modern browsers TBT

Potential savings of 27.9KB

Polyfills and transforms enable legacy browsers to use new JavaScript features. However, many aren't necessary for modern browsers. For your bundled JavaScript, adopt a modern script deployment strategy using module/nomodule feature detection to reduce the amount of code shipped to modern browsers, while retaining support for legacy browsers.

URL	POTENTIAL SAVINGS
https://cdn-cookieyes.com/client_data/1db93ee2b701940c49a09389/script.js	13.9KB
Line:0 Column:40849	<code>Array.prototype.find</code>
Line:0 Column:41014	<code>Array.from</code>
Line:0 Column:42252	<code>Array.prototype.map</code>
https://cdn-cookieyes.com/client_data/1db93ee2b701940c49a09389/banner.js	13.9KB
Line:0 Column:39638	<code>Array.prototype.filter</code>
Line:0 Column:39901	<code>Array.prototype.find</code>
Line:0 Column:40066	<code>Array.from</code>
Line:0 Column:41304	<code>Array.prototype.map</code>
Line:0 Column:43788	<code>Object.getOwnPropertyDescriptors</code>
Line:0 Column:44227	<code>Object.keys</code>
Line:0 Column:75399	<code>@babel/plugin-transform-regenerator</code>

N/A **Minimize main-thread work** TBT Main-thread busy for 592ms

Consider reducing the time spent parsing, compiling and executing JS. You may find delivering smaller JS payloads helps with this.

CATEGORY	TIME SPENT
Other	257ms
Script Evaluation	169ms
Style & Layout	118ms
Parse HTML & CSS	29ms
Script Parsing & Compilation	14ms
Rendering	3ms

N/A **Reduce the impact of third-party code** TBT Total size was 261KB

Third-party code can significantly impact load performance. Limit the number of redundant third-party providers and try to load third-party code after your page has primarily finished loading.

THIRD-PARTY	TRANSFER SIZE	MAIN-THREAD BLOCKING TIME
GOOGLE TAG MANAGER	78.9KB	0ms
• https://www.googletagmanager.com/gtag/js?id=G-PZKPCG3N9E	78.9KB	0ms
CDN-COOKIEYES.COM	77.0KB	0ms
• https://cdn-cookieeyes.com/client_data/1db93ee2b701940c49a09389/script.js	33.5KB	0ms
• https://cdn-cookieeyes.com/client_data/1db93ee2b701940c49a09389/banner.js	31.9KB	0ms
• https://cdn-cookieeyes.com/client_data/1db93ee2b701940c49a09389/config/liHwou-l.json	5.46KB	0ms
• Other resources	6.21KB	0ms
YOUTUBE	71.9KB	0ms
• https://img.youtube.com/vi/gSnXmucYlJM/maxresdefault.jpg	71.9KB	0ms
GOOGLE FONTS	32.6KB	0ms
• https://fonts.gstatic.com/s/roboto/v30/KFOmCnqEu92Fr1Mu4mxK.woff2	15.9KB	0ms
• https://fonts.gstatic.com/s/roboto/v30/KFOICnqEu92Fr1MmWUlfBBc4.woff2	15.6KB	0ms
COOKIEYES.COM	305B	0ms

N/A

Avoid large layout shifts CLS

Nothing to do here, good job!

N/A

User Timing marks and measures

No user timings and/or marks found.